

## **Barco portacontenedores**

**Tipo panamax**

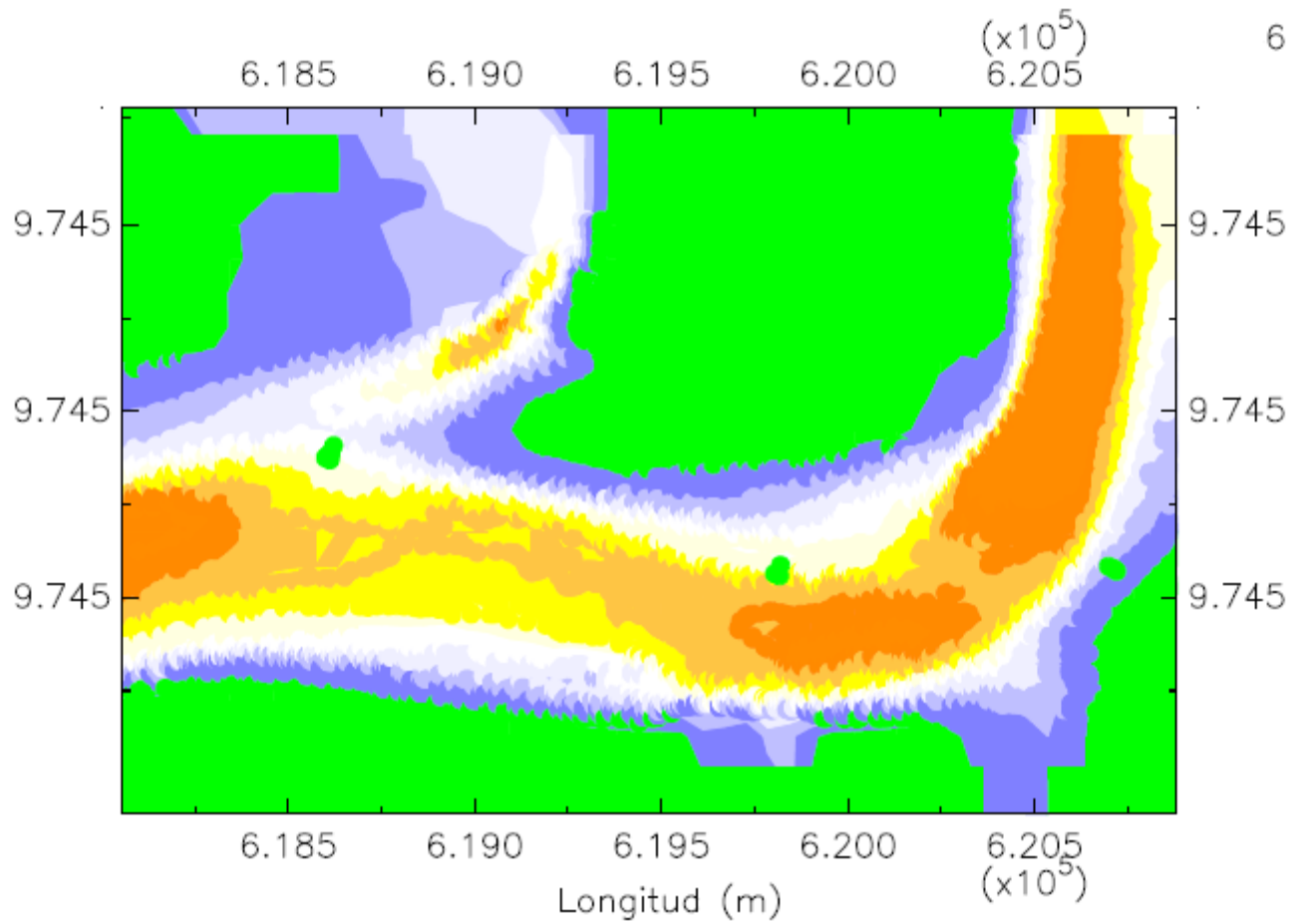
**Eslora: 289 m**

**Manga: 32.20 m**

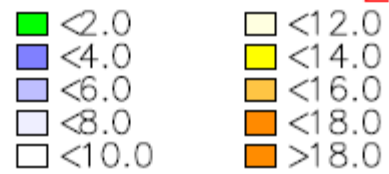
**Calado: 11.60 m**

**En la zona 3, tramo 2**

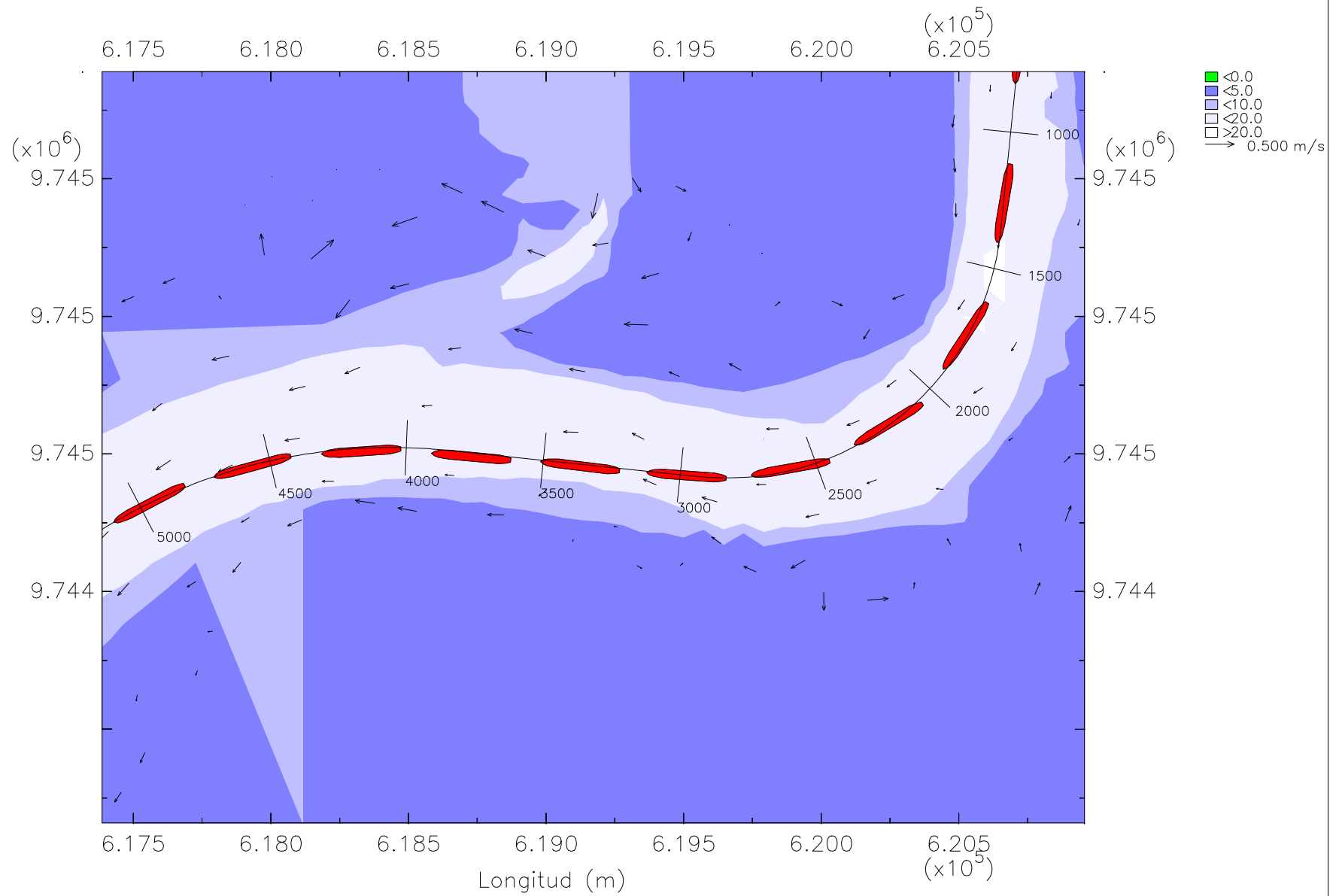
**Bajo condiciones de llenante**



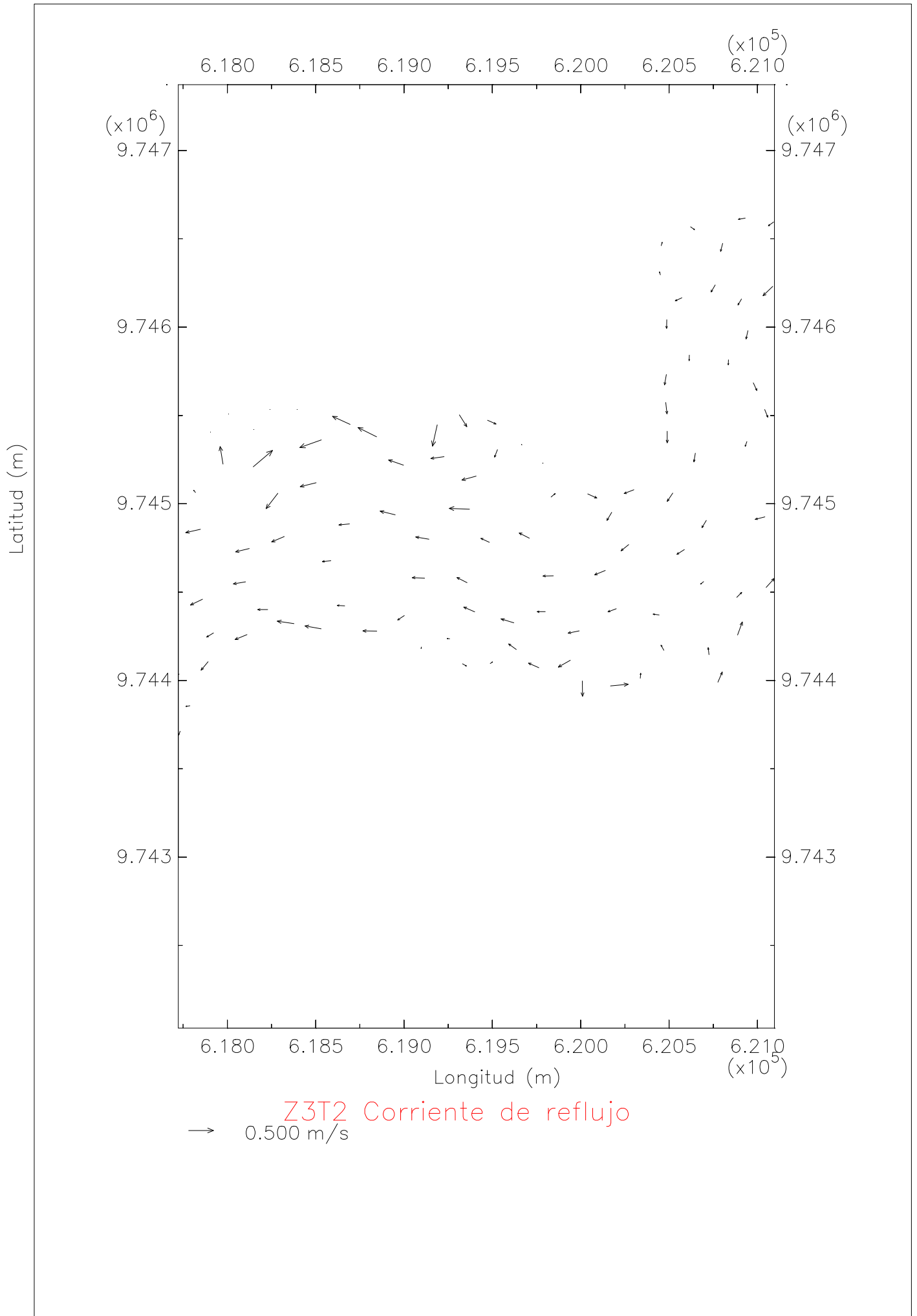
Zona 3 Tramo 2 Profundidad

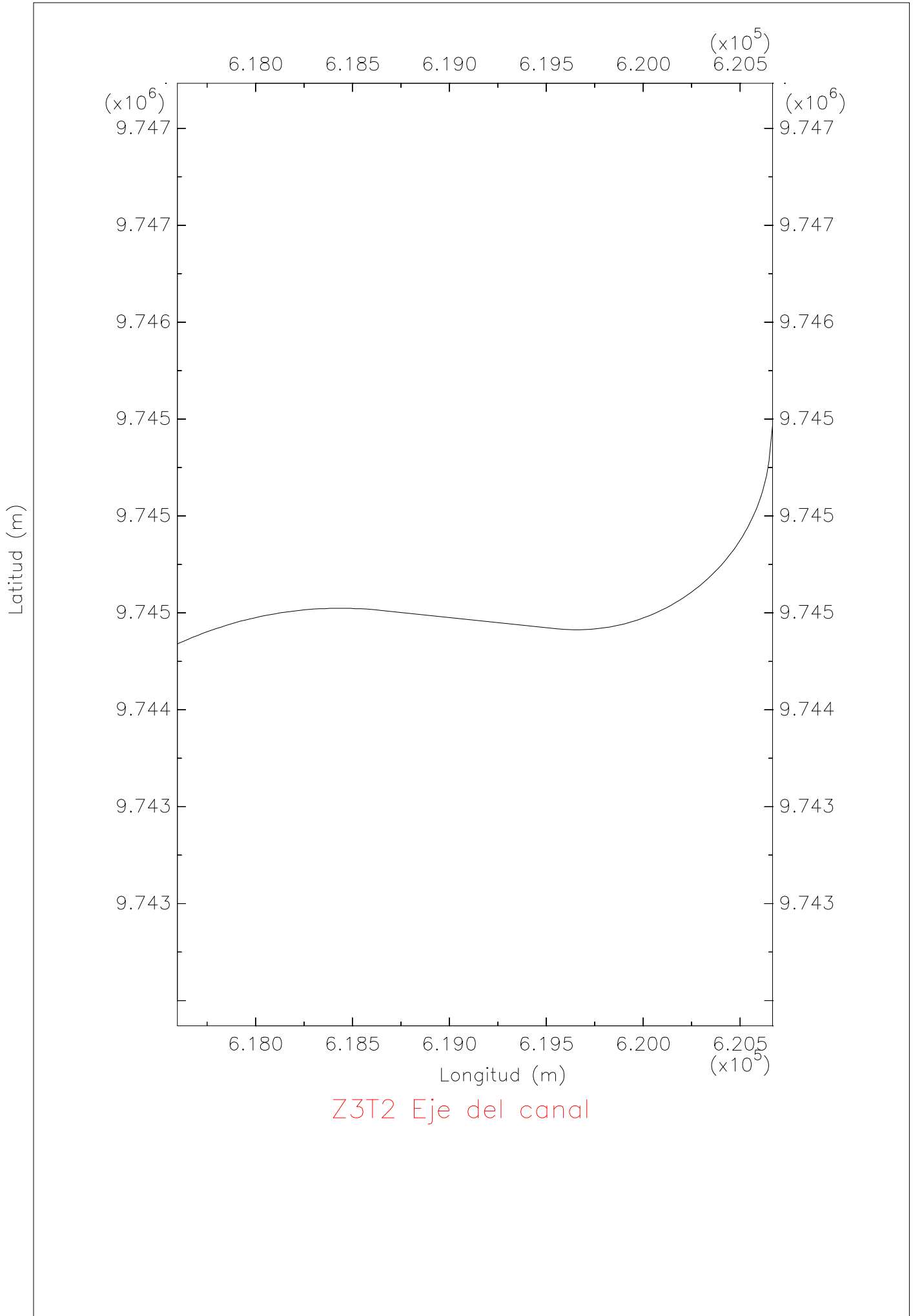


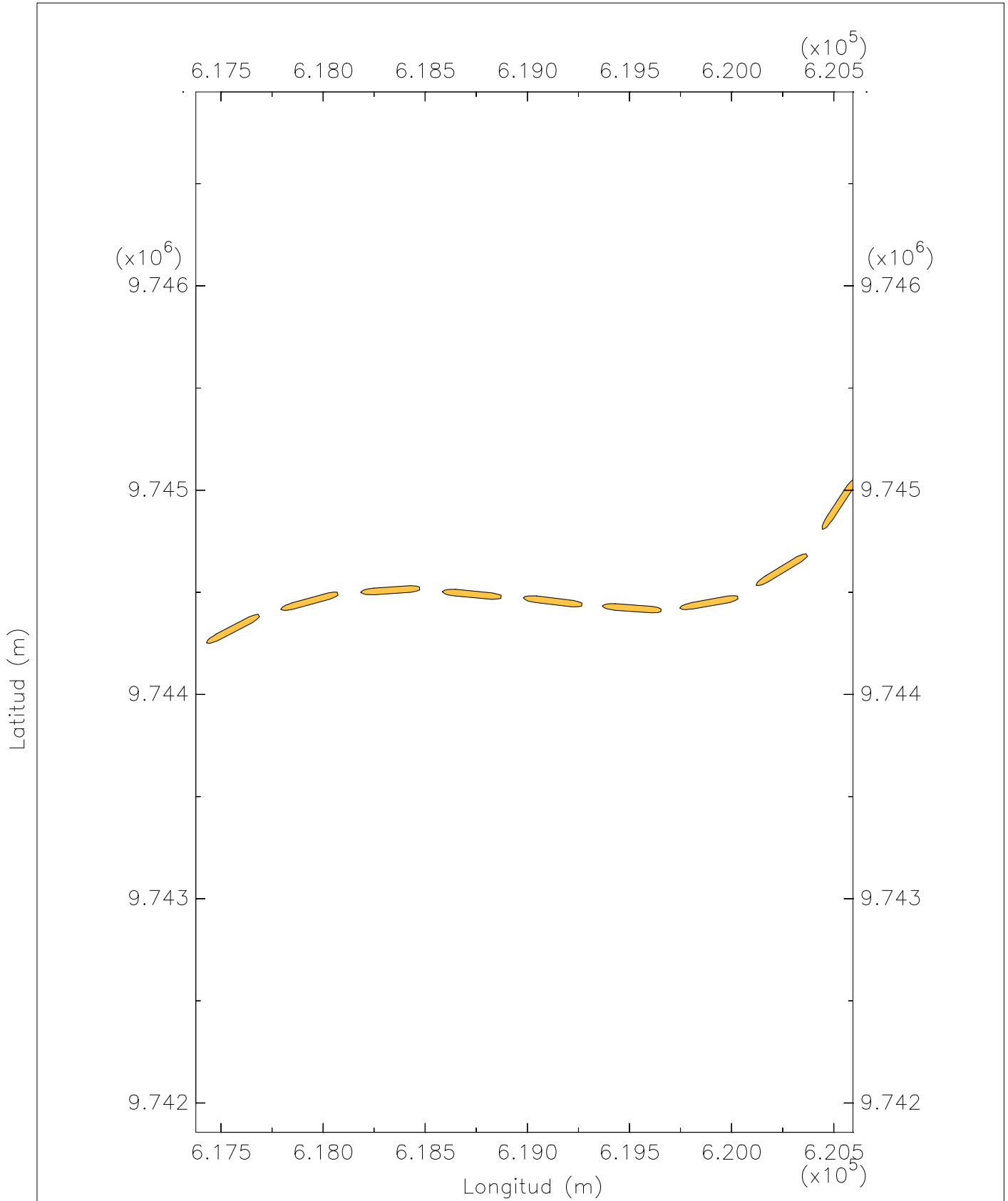
Latitud (m)



Z3T2 Trayectoria del barco portacontenedores panamax y corriente en reflujó

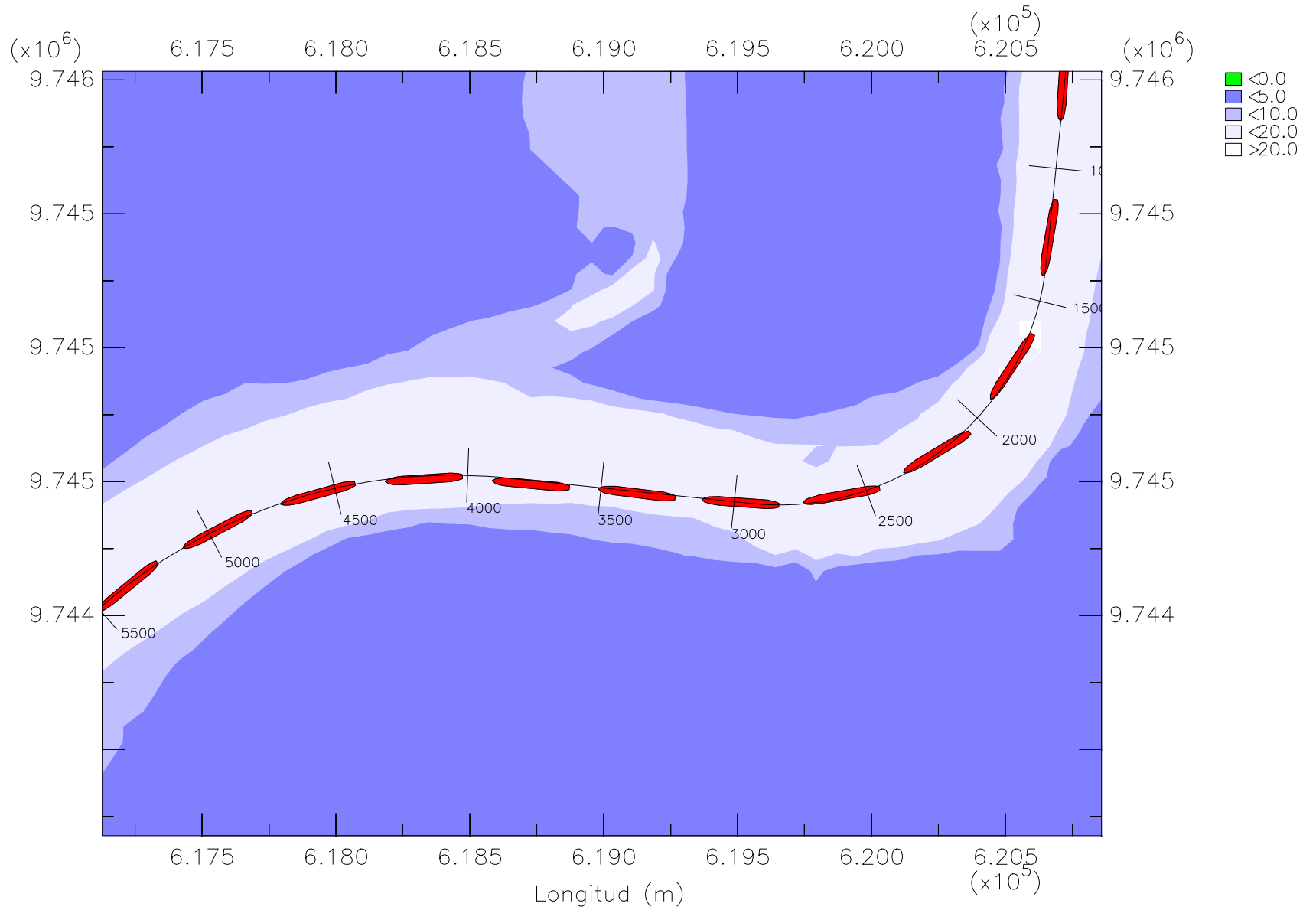






Z3T2 Trayectoria del barco portacontenedores panamax en reflujó

Latitud (m)



Z3T2 Trayectoria del barco granelero panamax en reflujó