

**Barco portacontenedores**

**Tipo post-panamax**

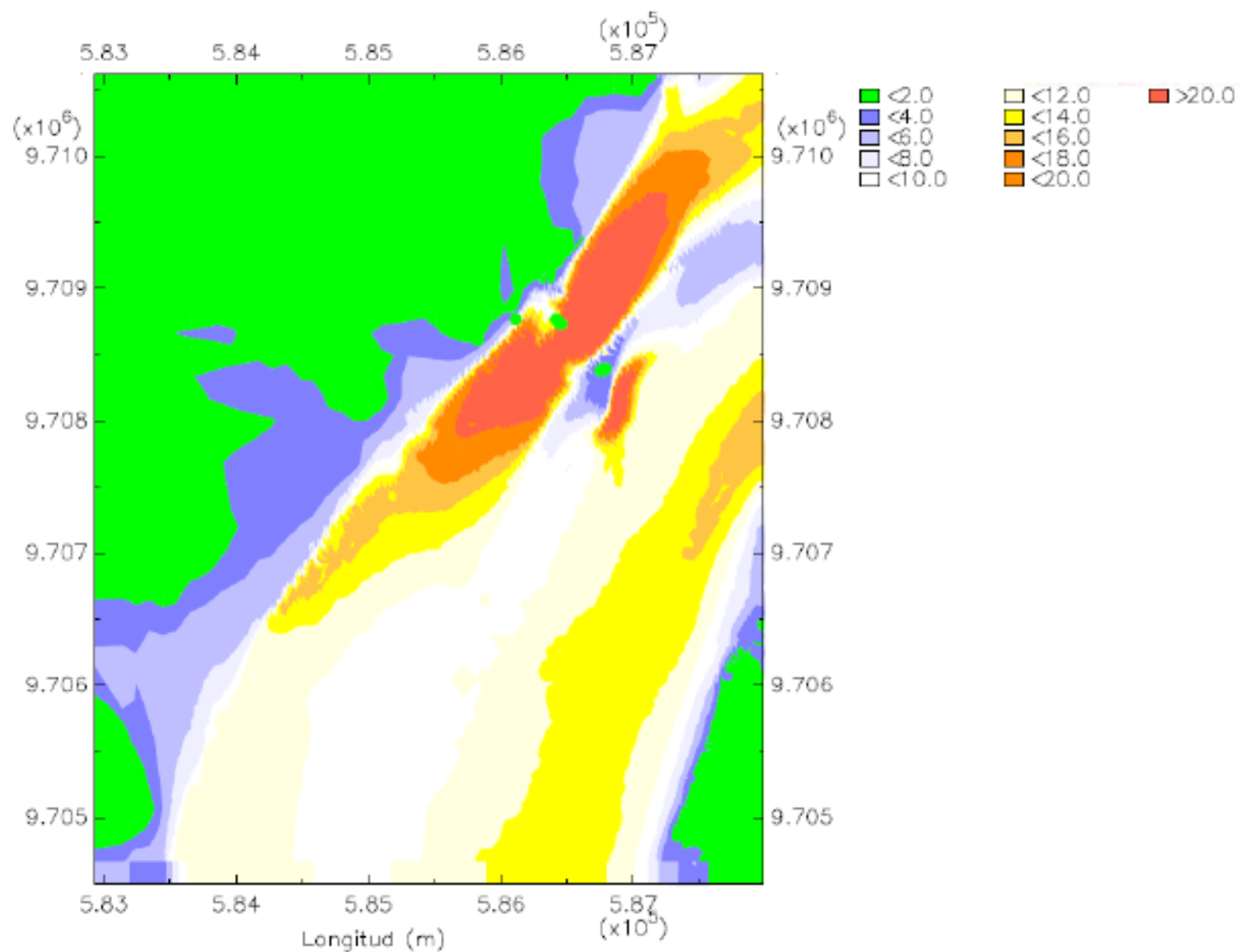
**Eslora: 318.20 m**

**Manga: 42.800 m**

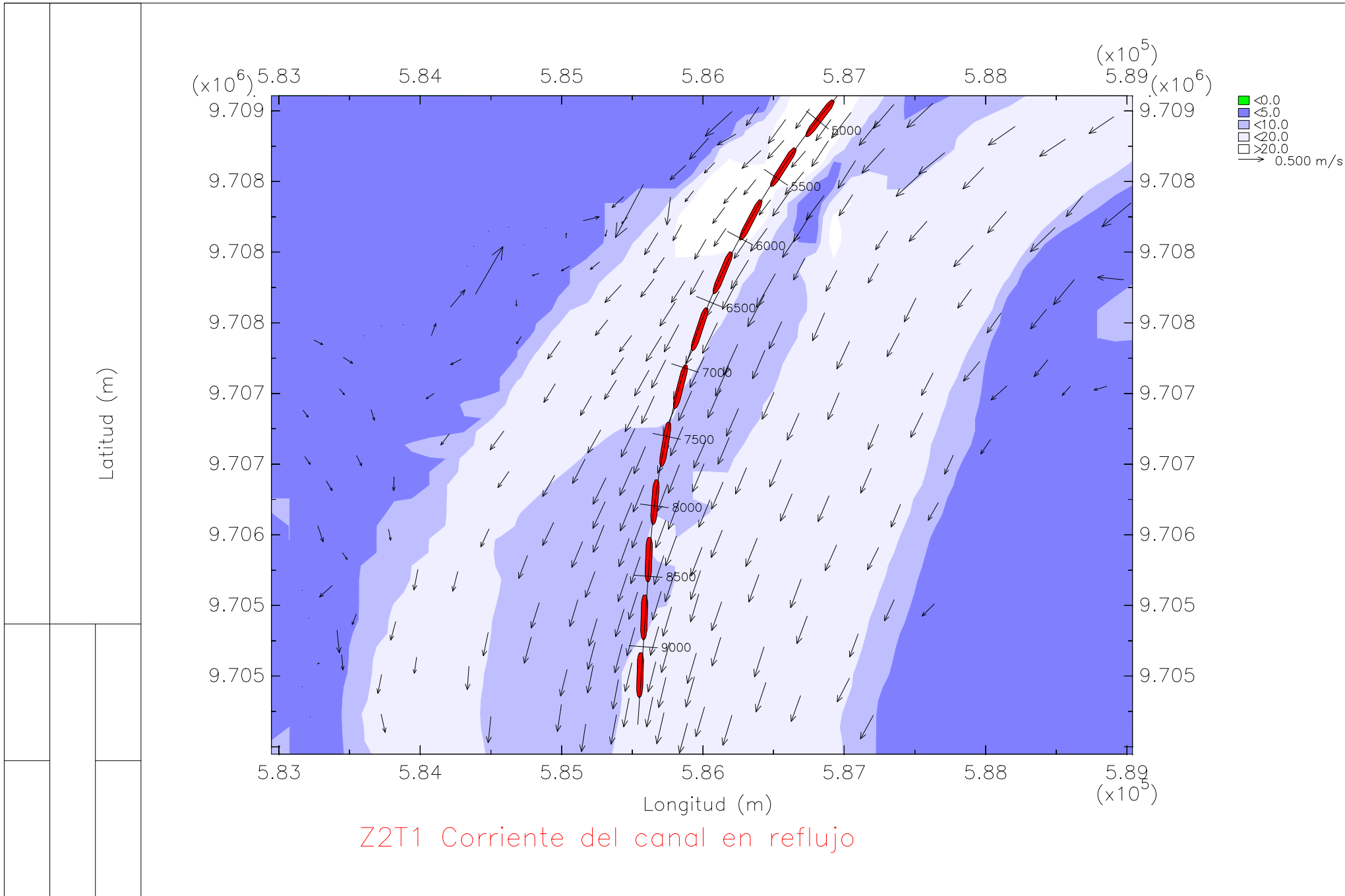
**Calado: 11.60 m**

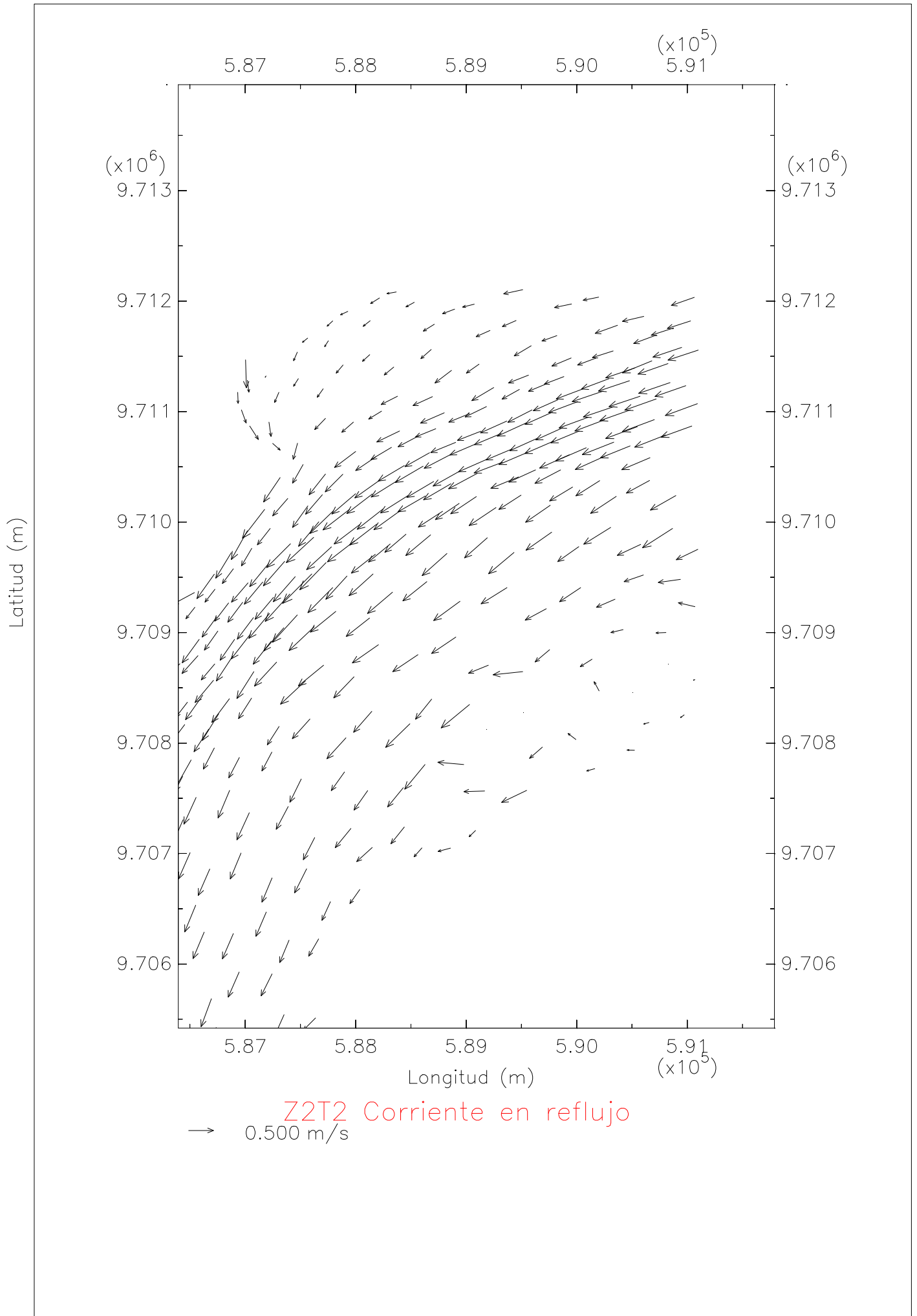
**En la zona 2, tramo 2**

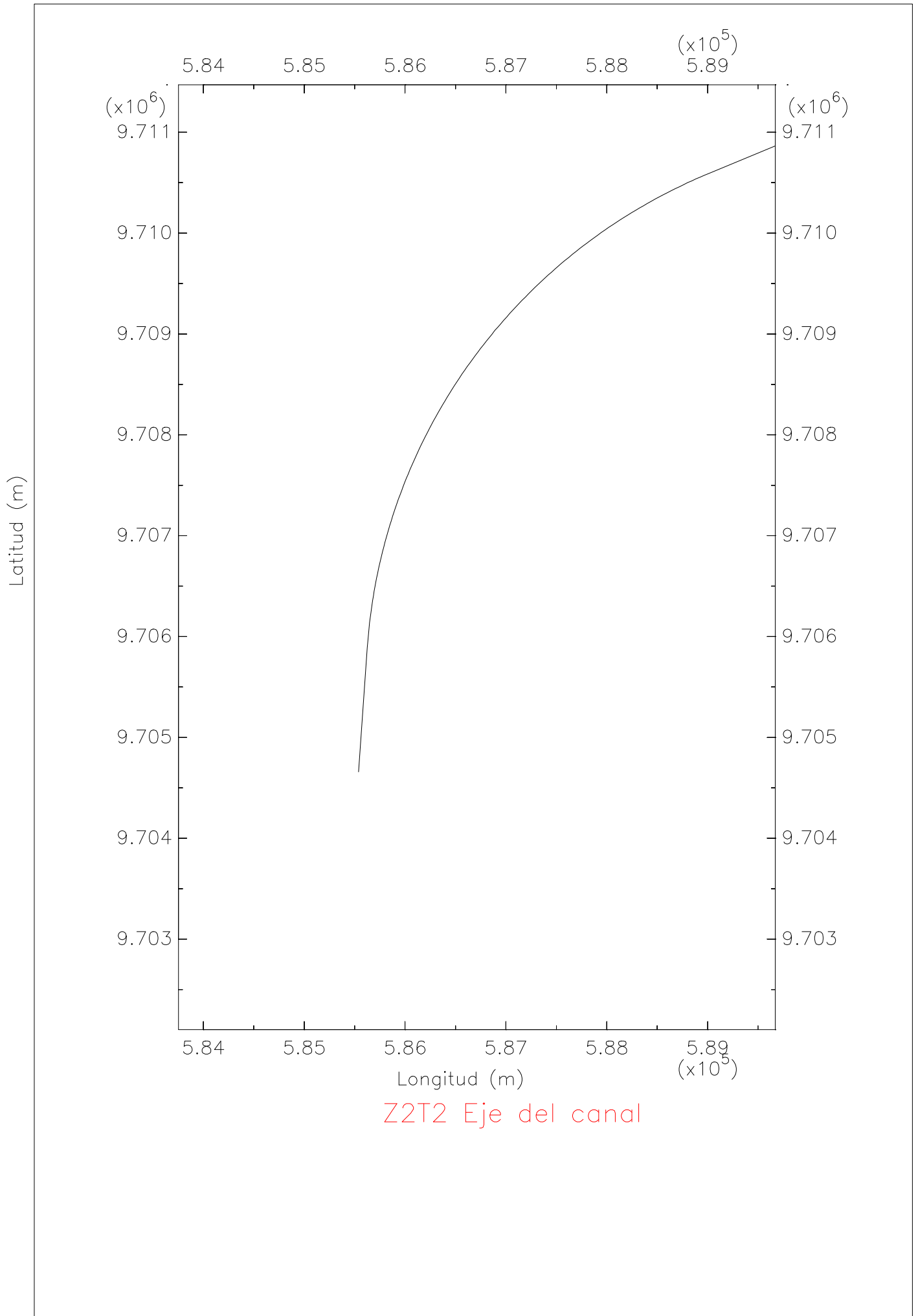
**Bajo condiciones de vaciante**

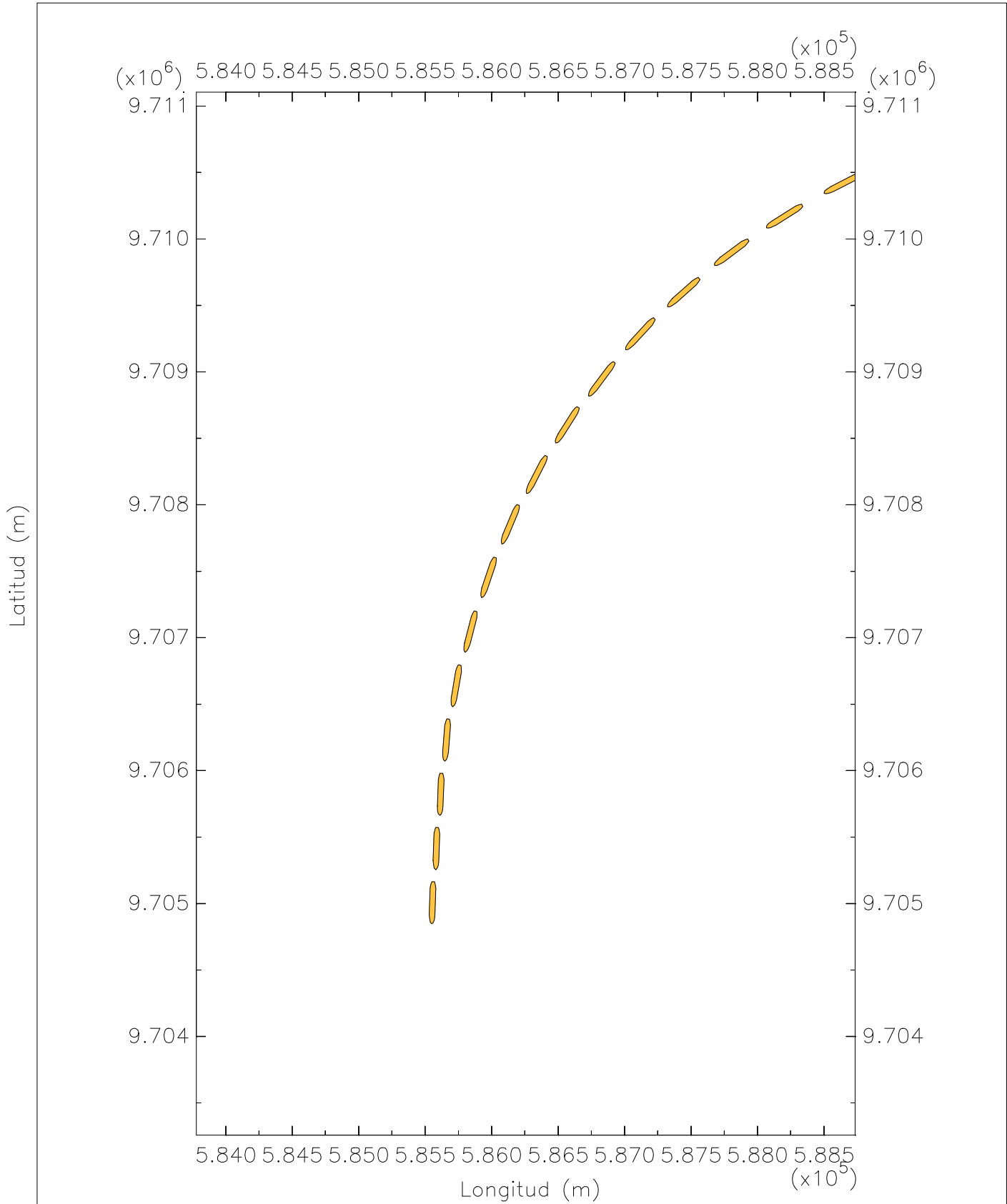


Zona 2 Tramo 2 Profundidad

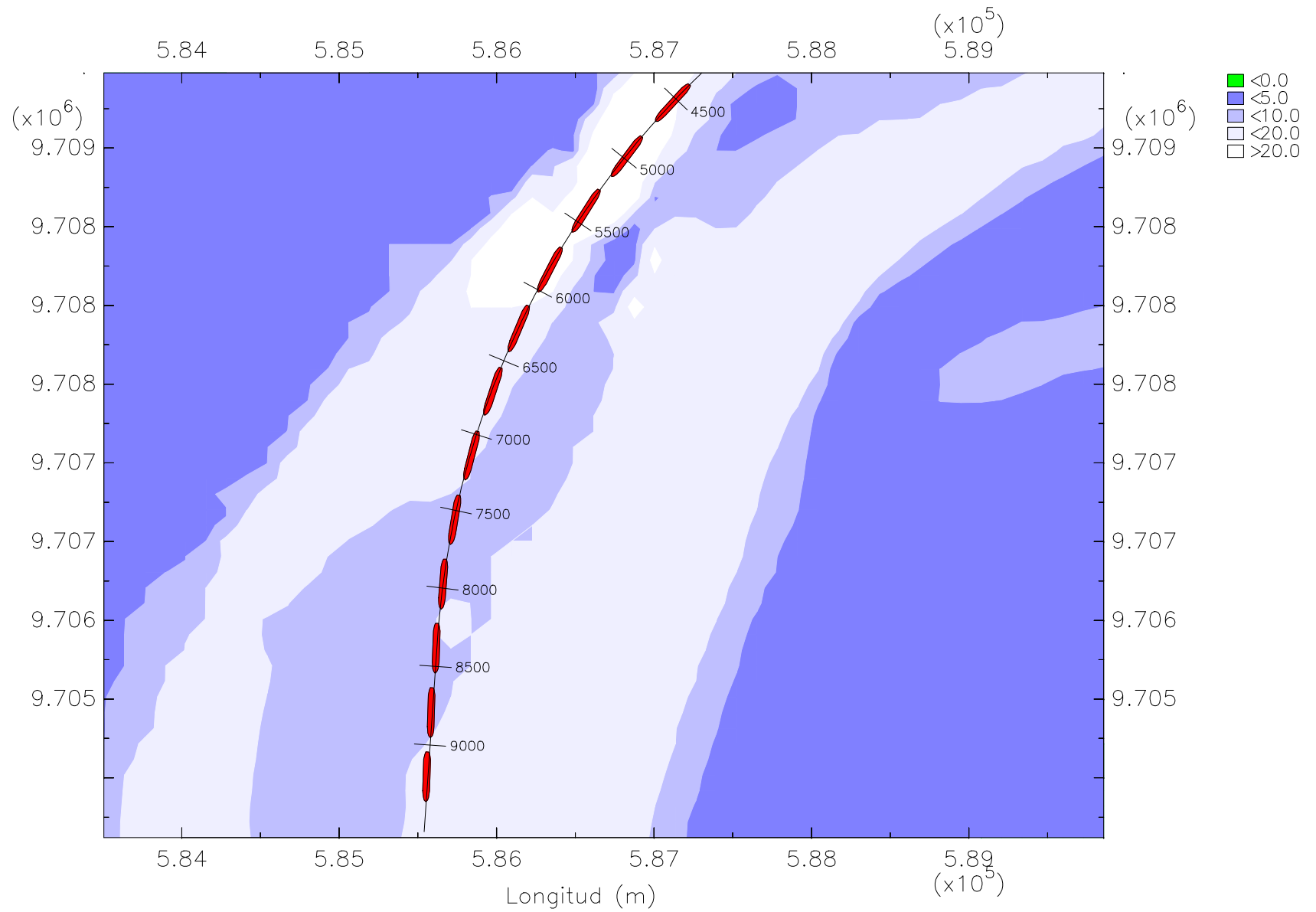








Z2T2 Trayectoria del barco portacontenedores post-panamax



Z2T2 Trayectoria del barco portacontenedores post-panamax