

Barco tipo granelero

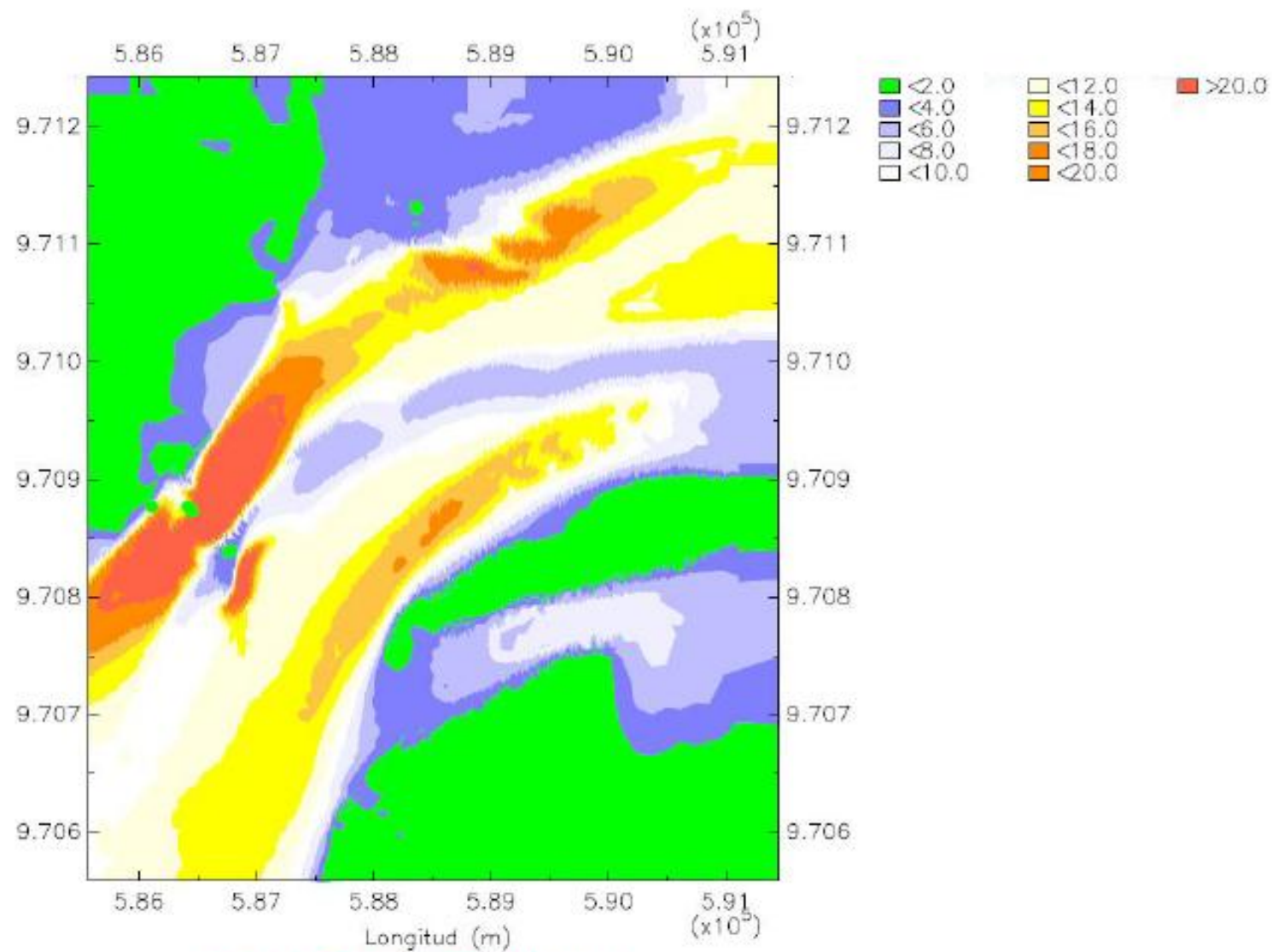
Eslora: 225 m

Manga: 32.20 m

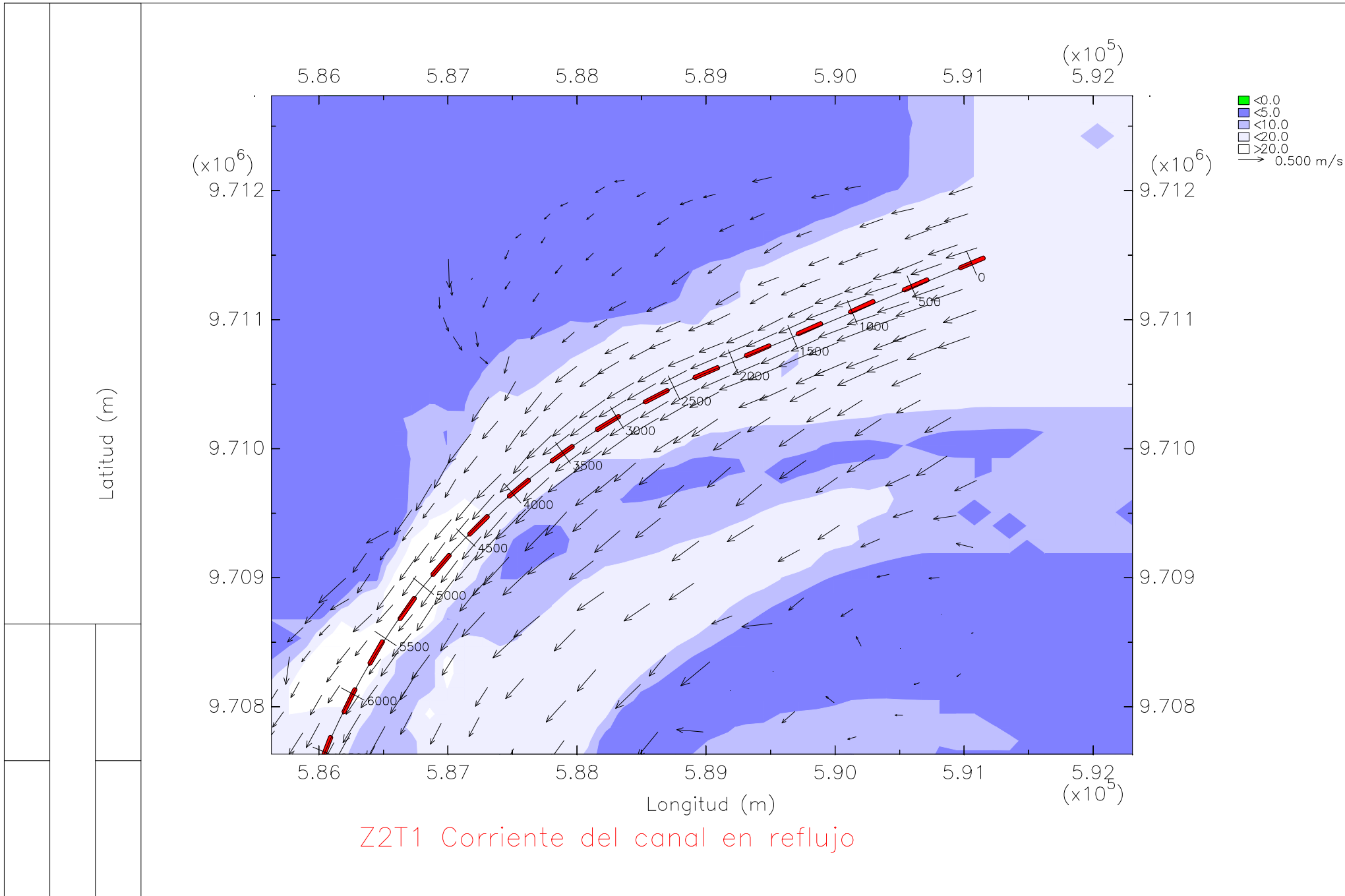
Calado: 12 m

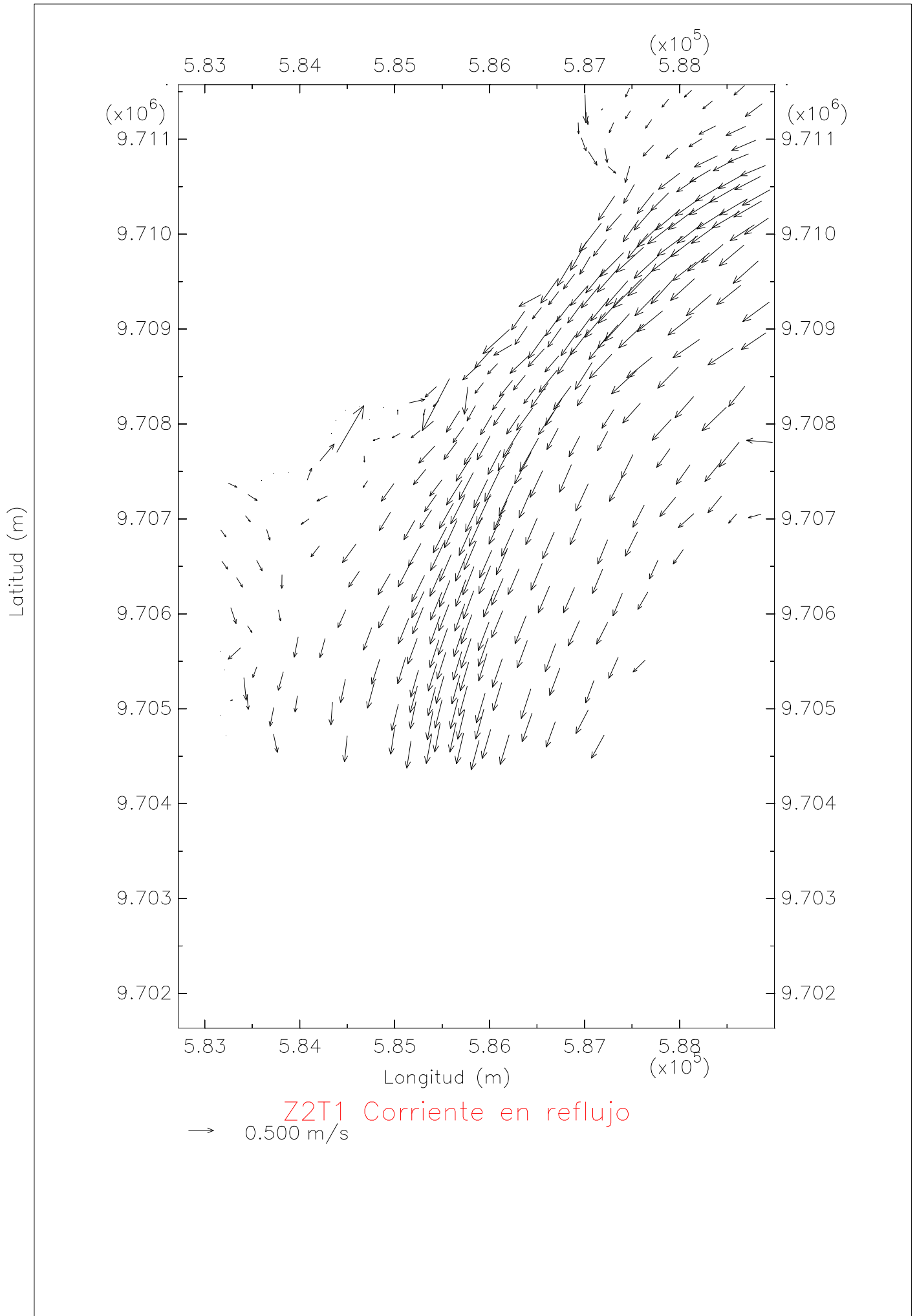
En la zona 2, tramo 1

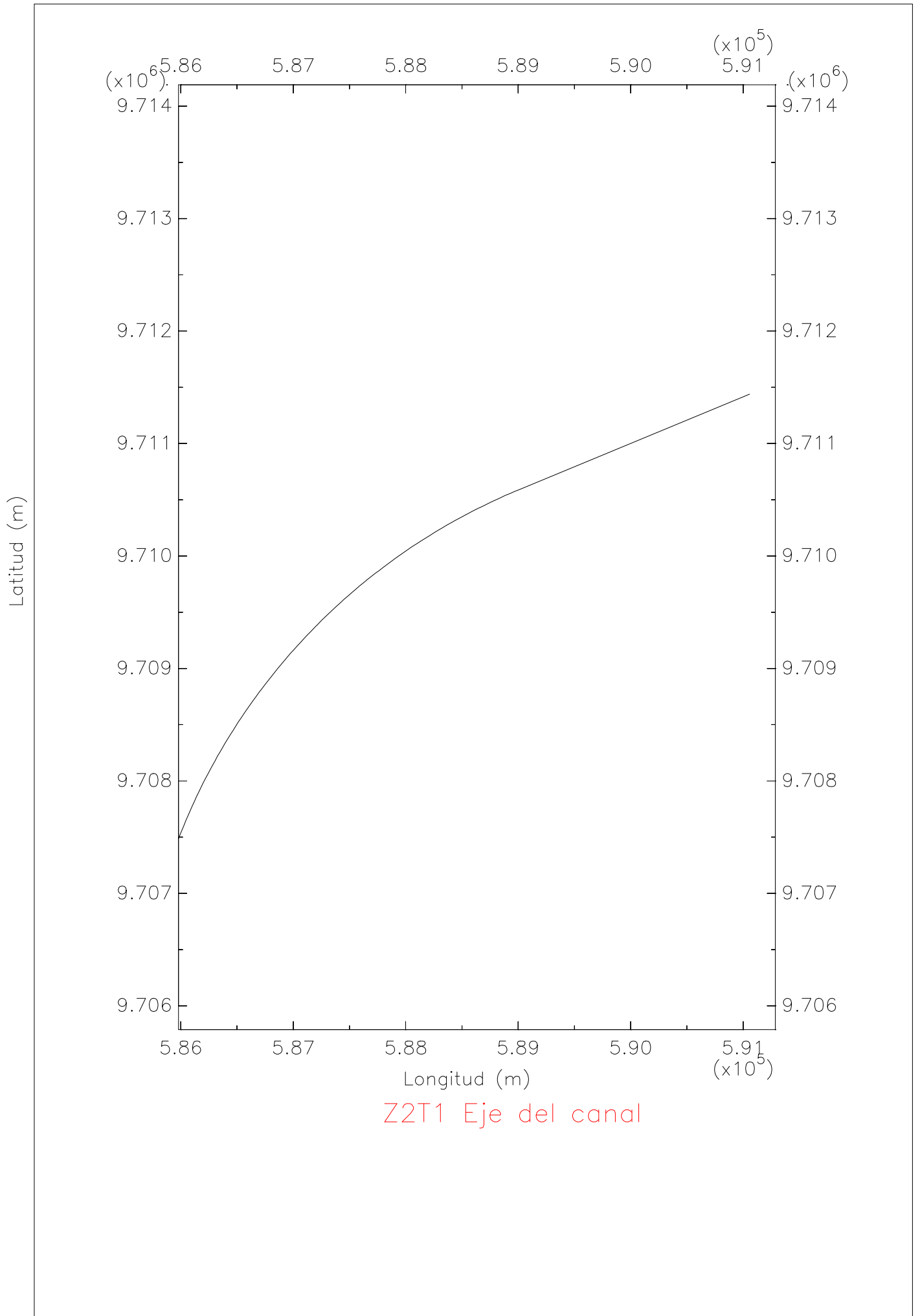
Bajo condiciones de vaciante

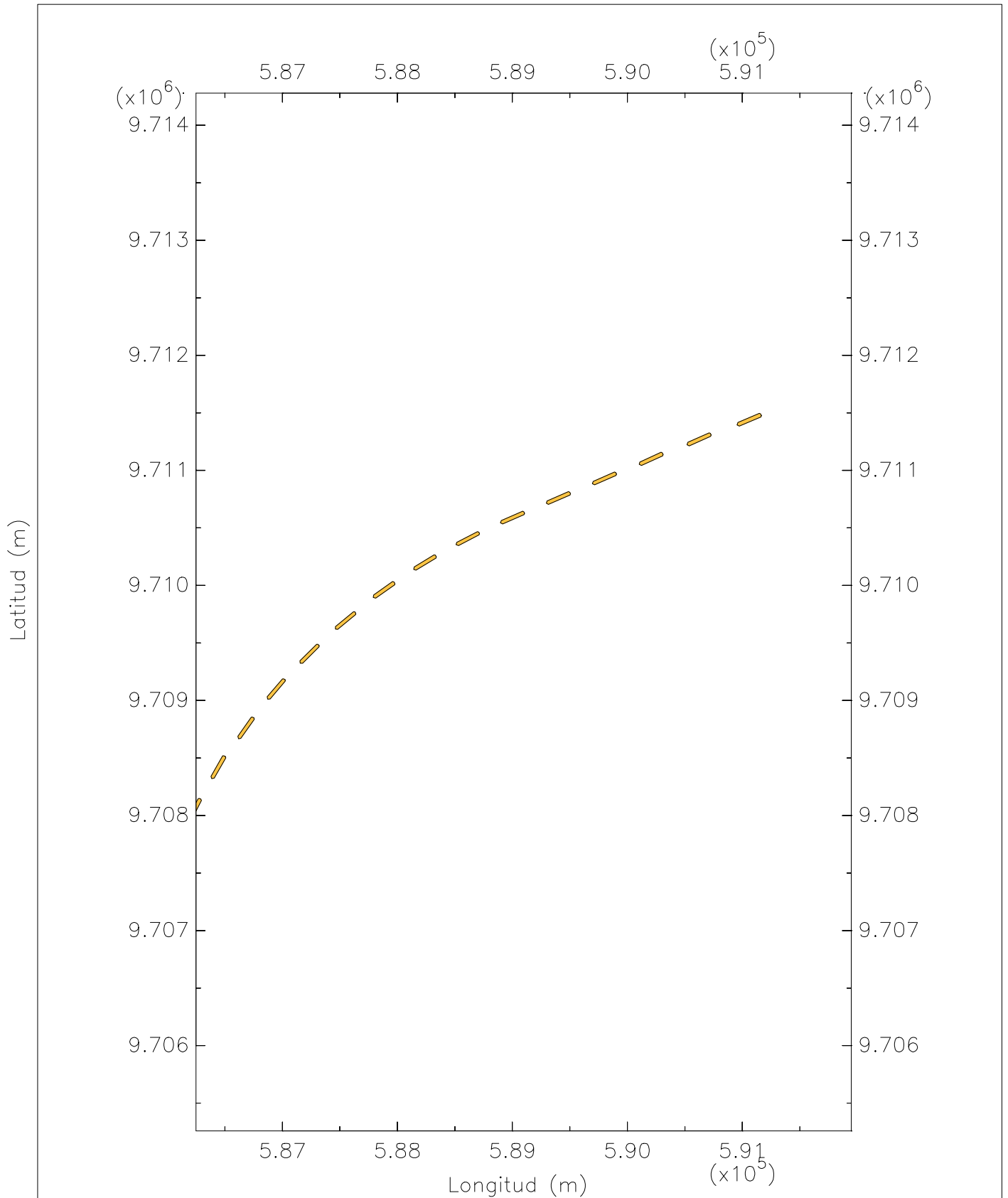


Zona 2 Tramo 1 Profundidad



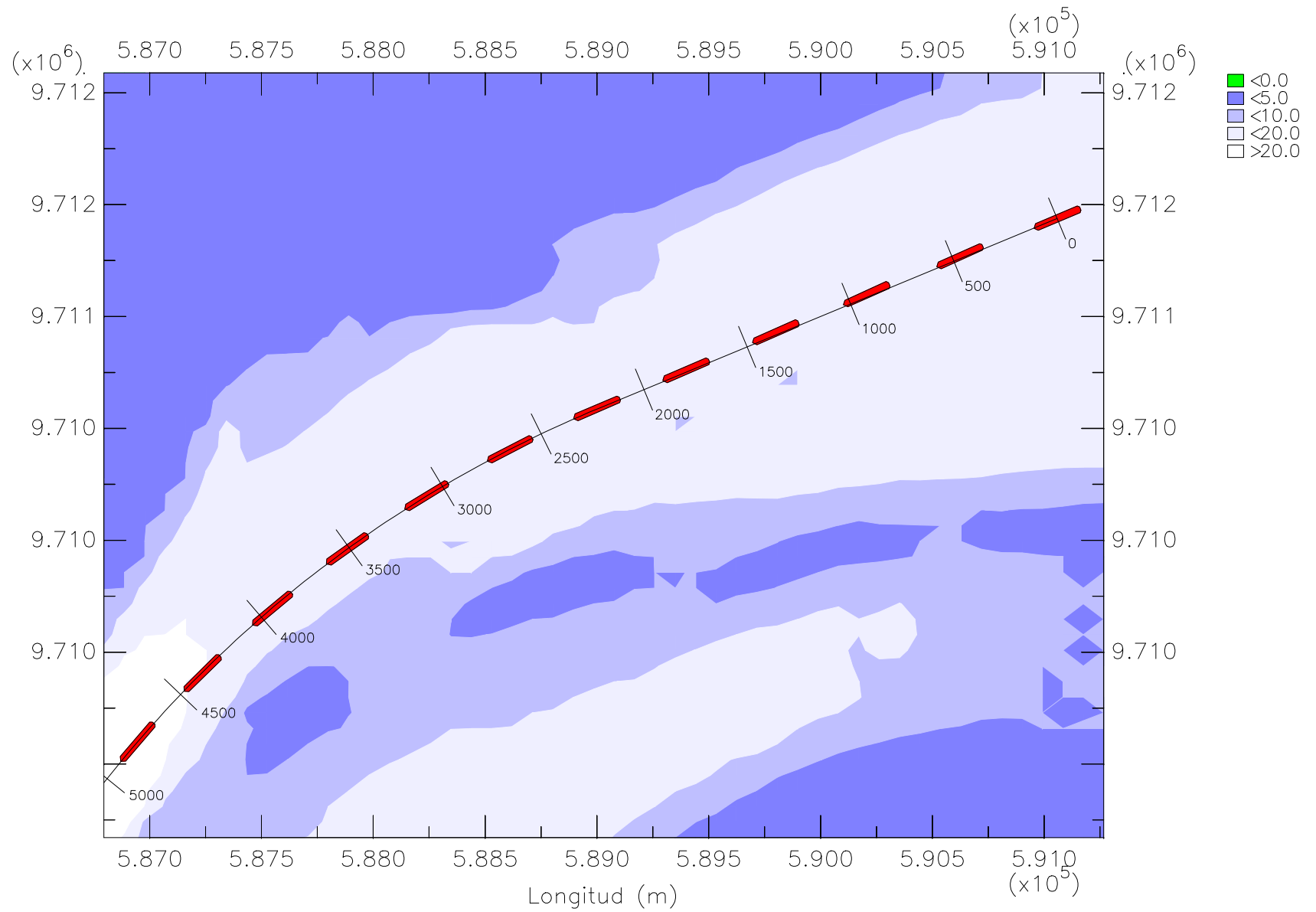






Z2T1 Trayectoria del barco granelero en reflujó

Latitud (m)



Z2T1 Trayectoria del barco granelero en reflujos