

Barco portacontenedores

Tipo post-panamax

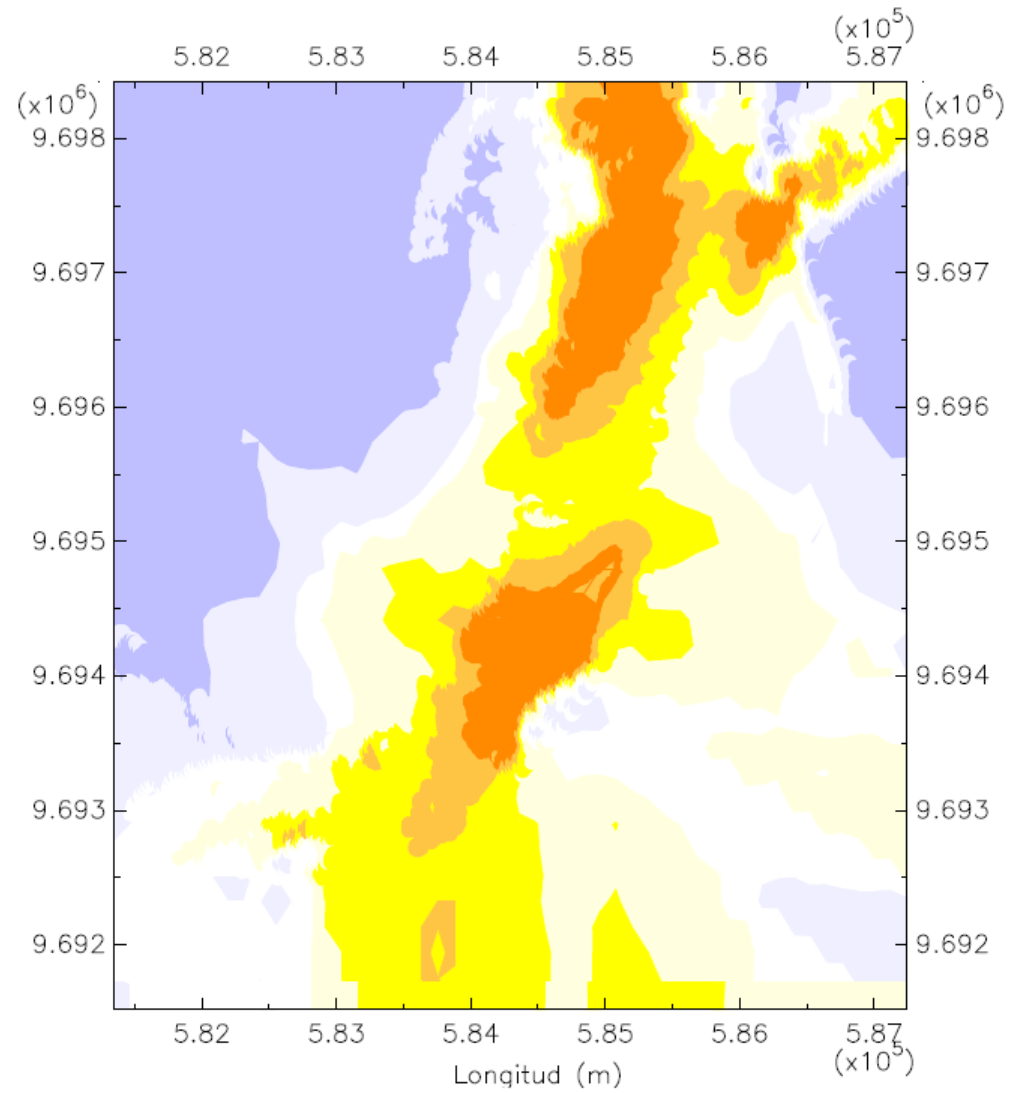
Eslora: 318.20 m

Manga: 42.800 m

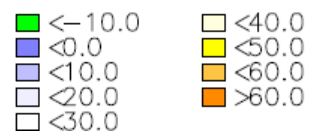
Calado: 11.60 m

En la zona 1, tramo 2

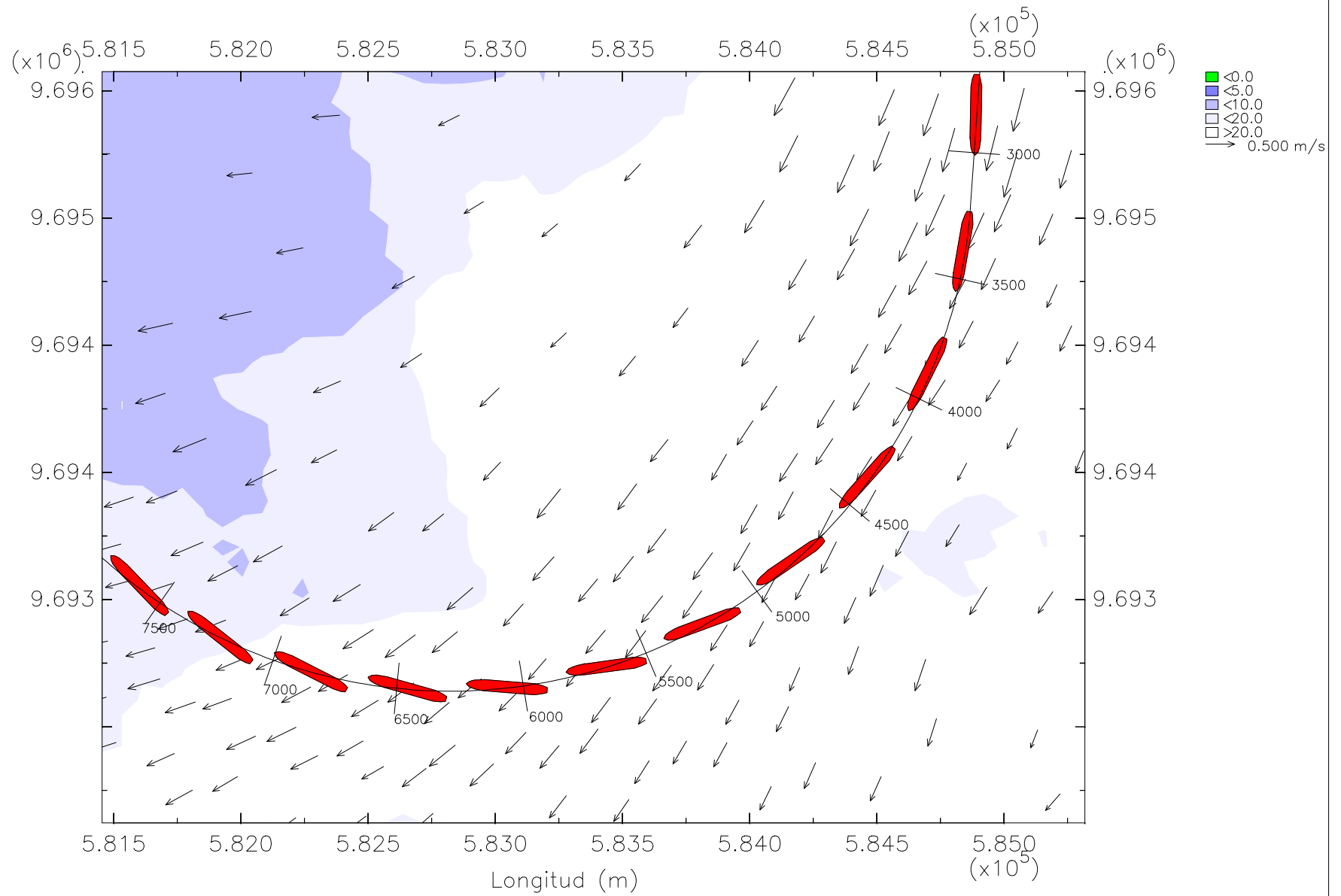
Bajo condiciones de vaciante



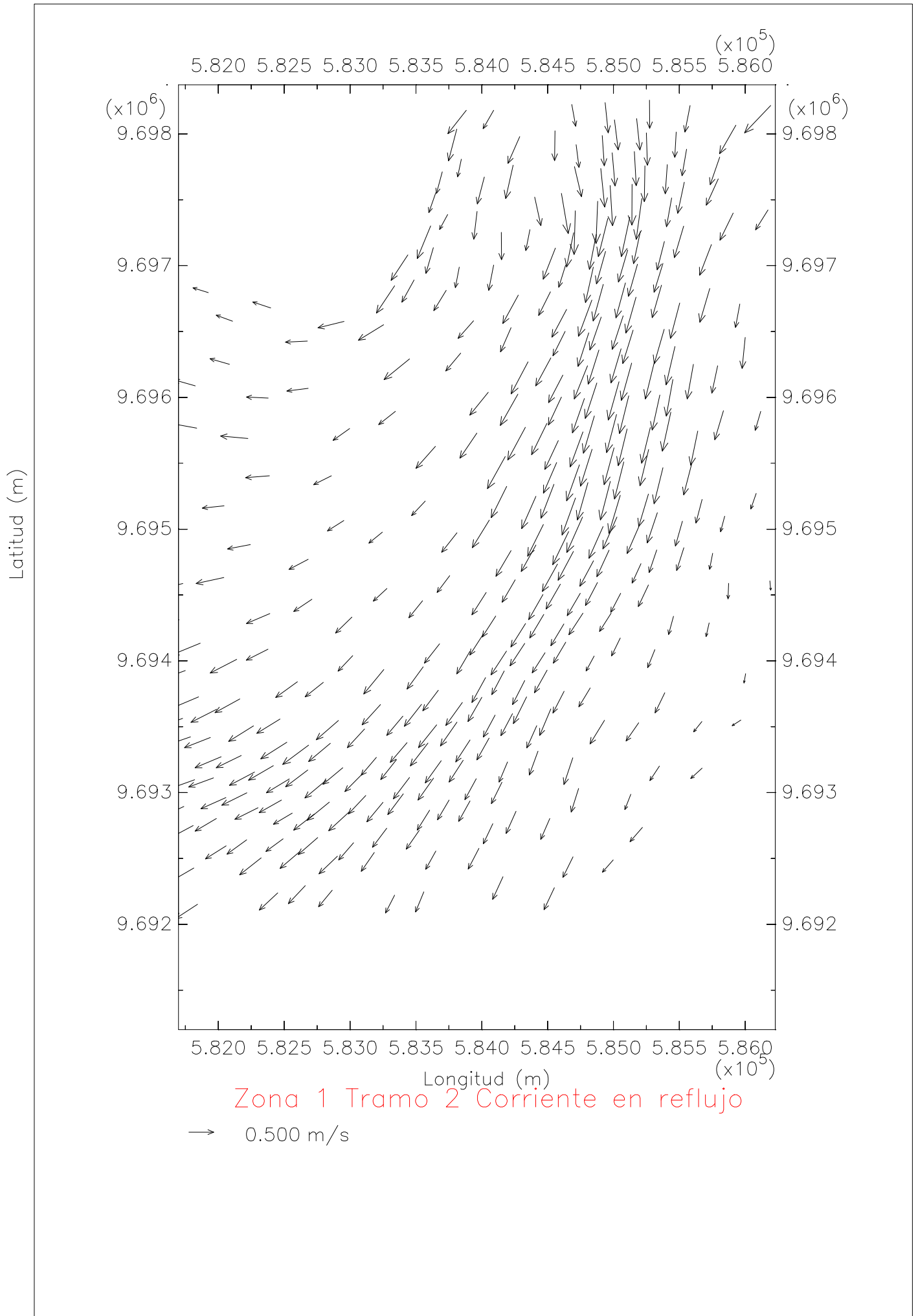
Zona 1 Tramo 2 Profundidad

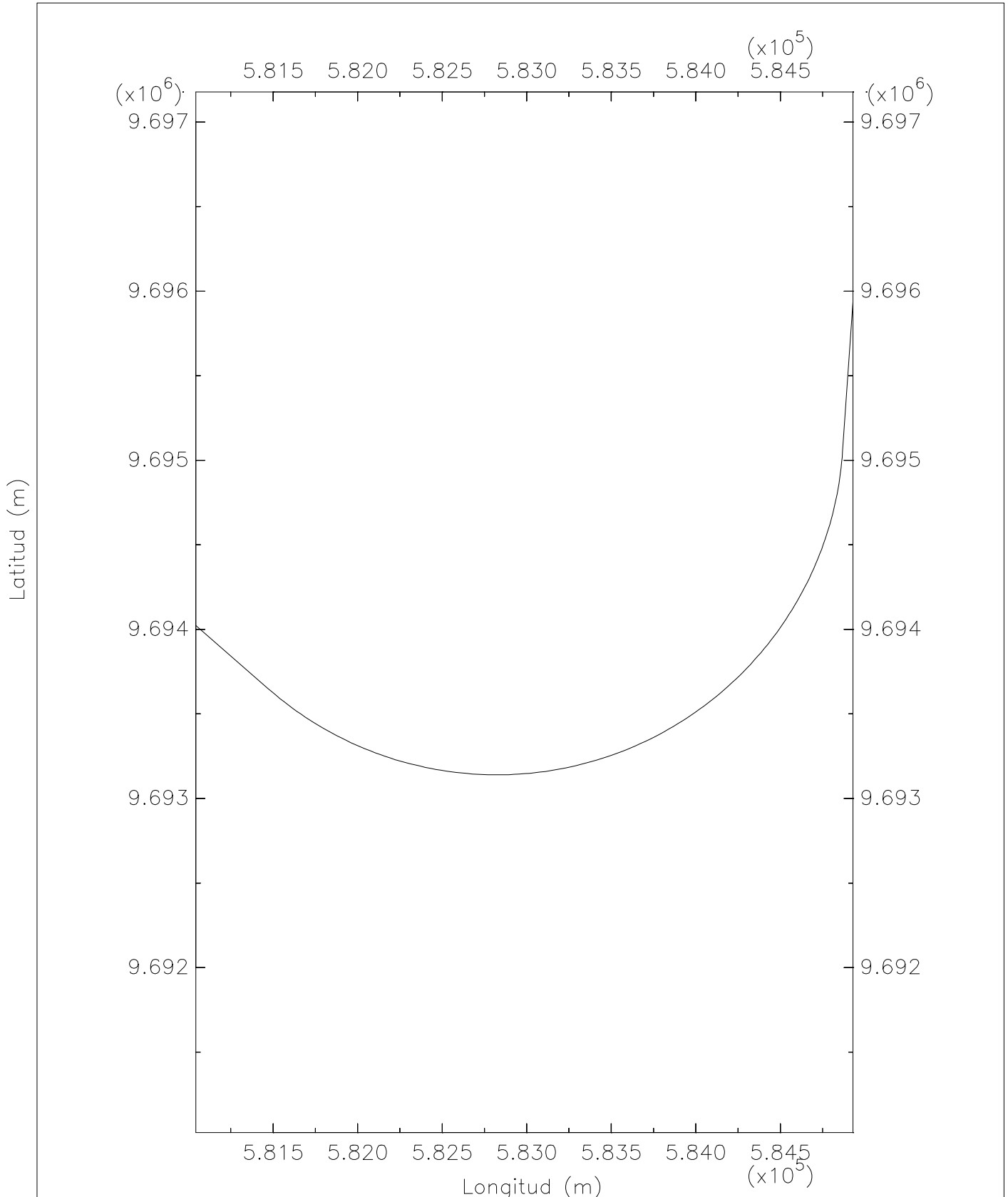


Latitud (m)

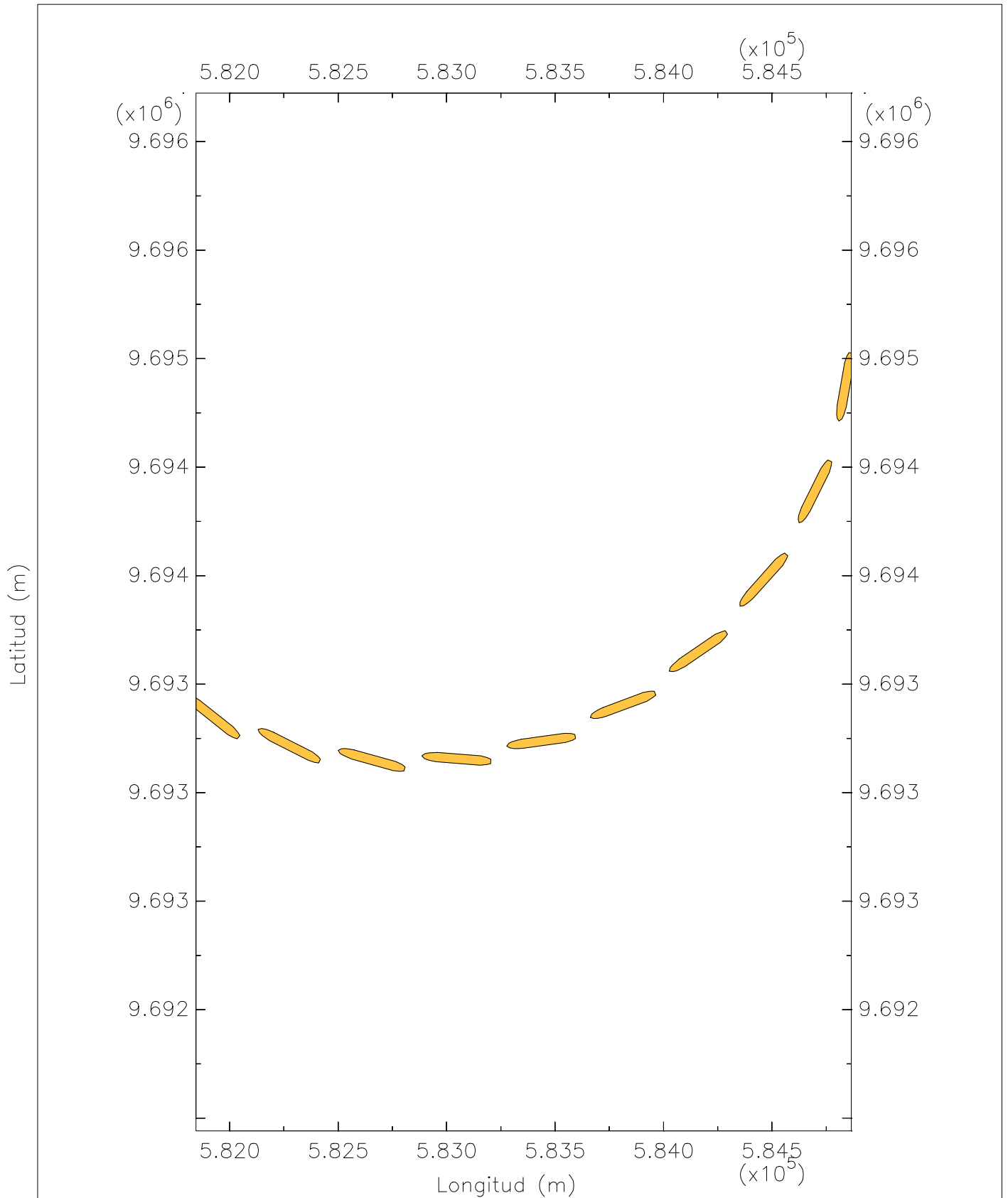


Z1T2Trayectoria del portacontenedores post-panamax con corriente en reflujo



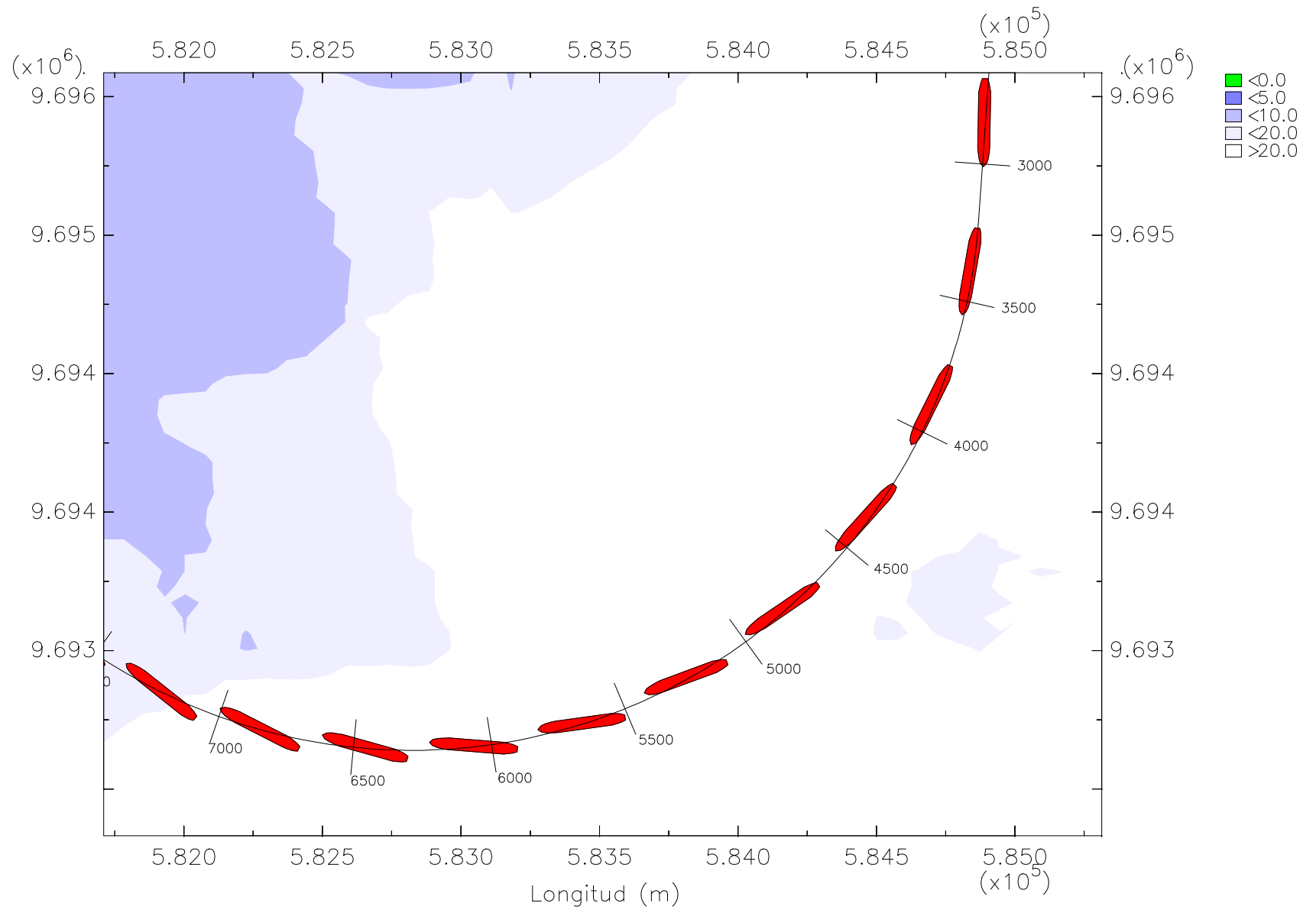


Zona 1 Tramo 2 Eje canal



Z1T2 Trayectoria del barco portacontenedores post-panamax en reflujos

Latitud (m)



Z1T2 Trayectoria del barco portacontenedores post-panamax en reflujo con prof