

Barco portacontenedores

Tipo post-panamax

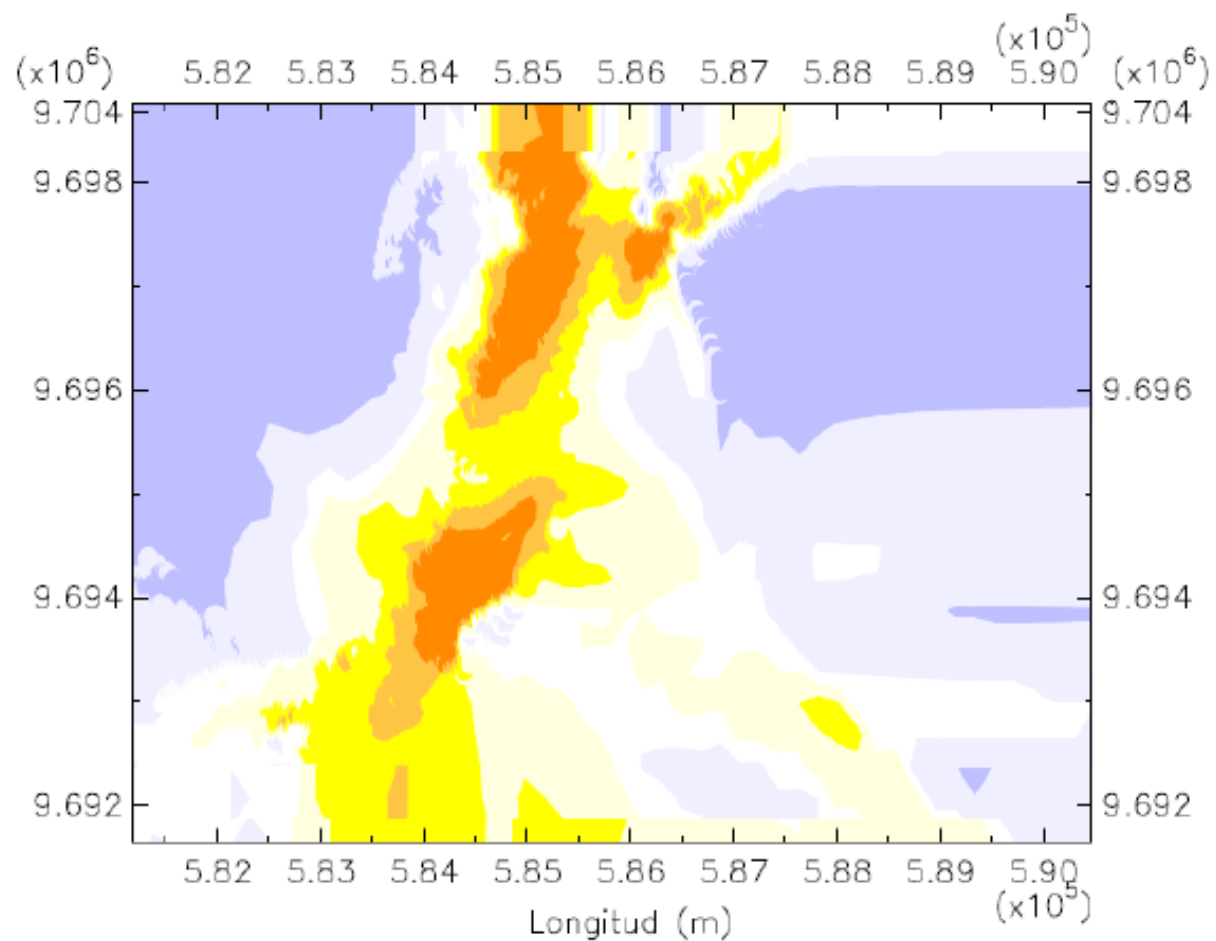
Eslora: 318.20 m

Manga: 42.800 m

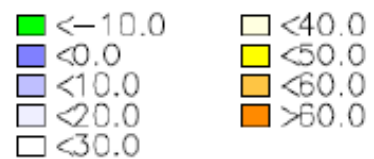
Calado: 11.60 m

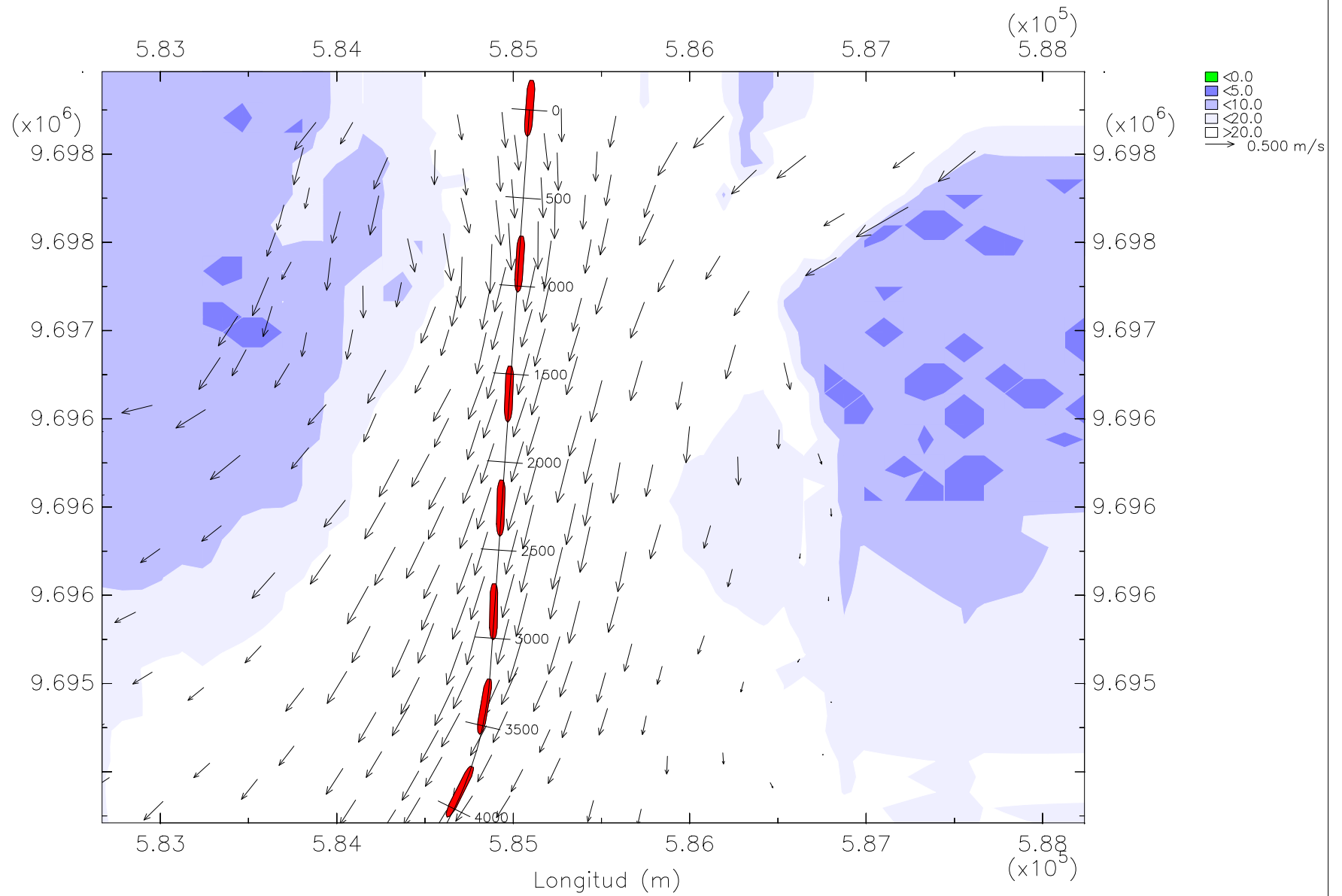
En la zona 1, tramo 1

Bajo condiciones de vaciante

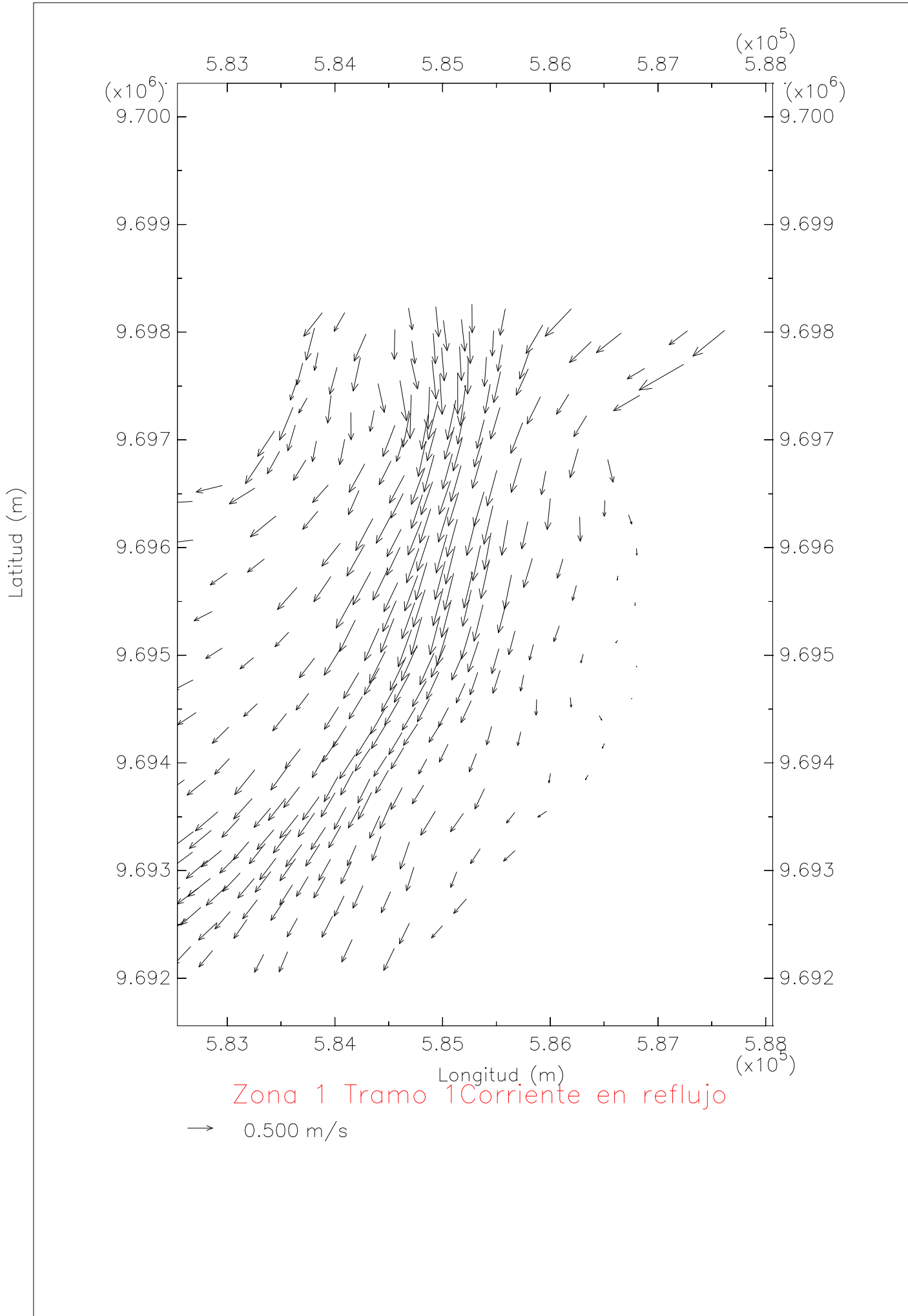


Zona 1 Tramo 1 Profundidad I



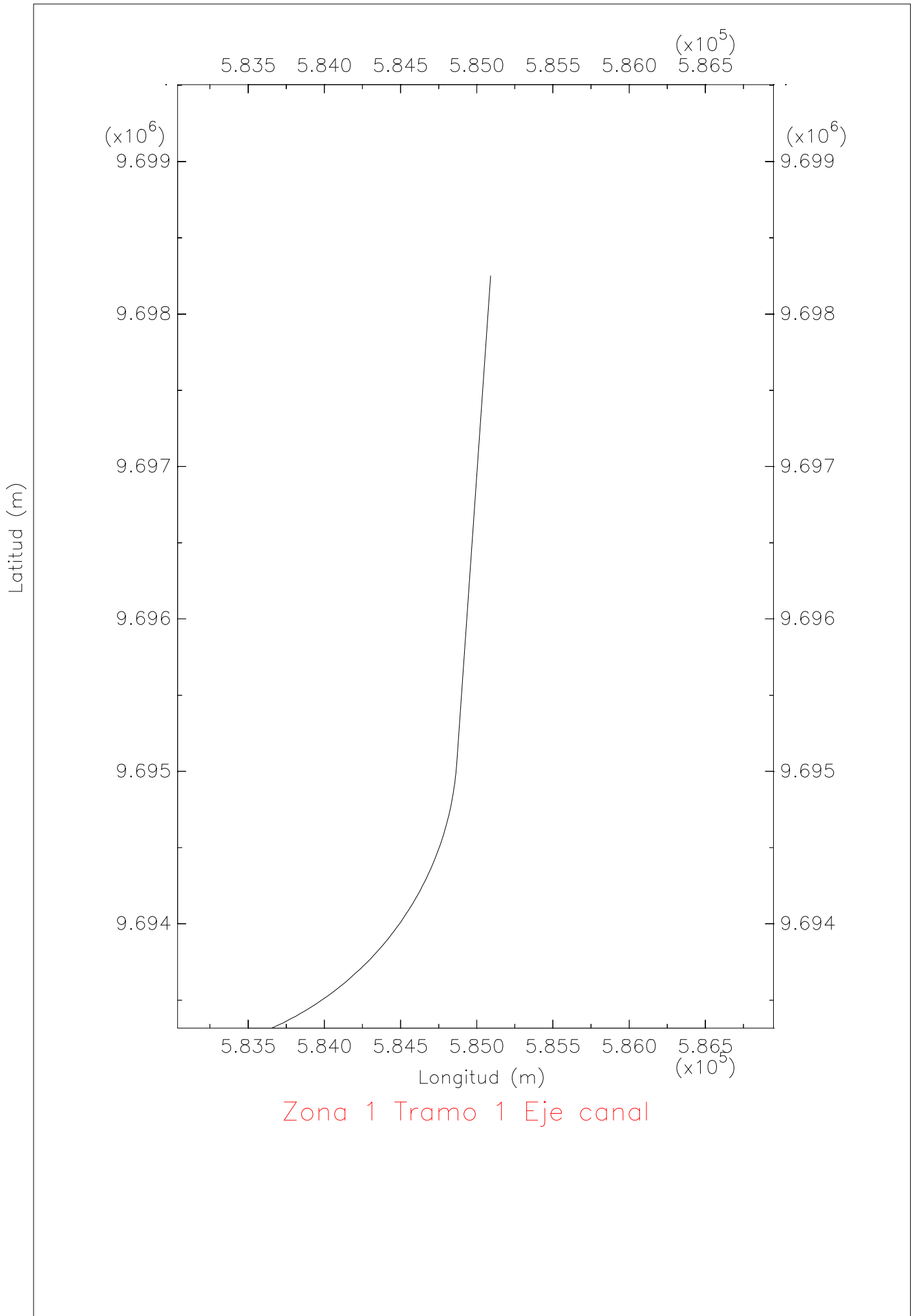


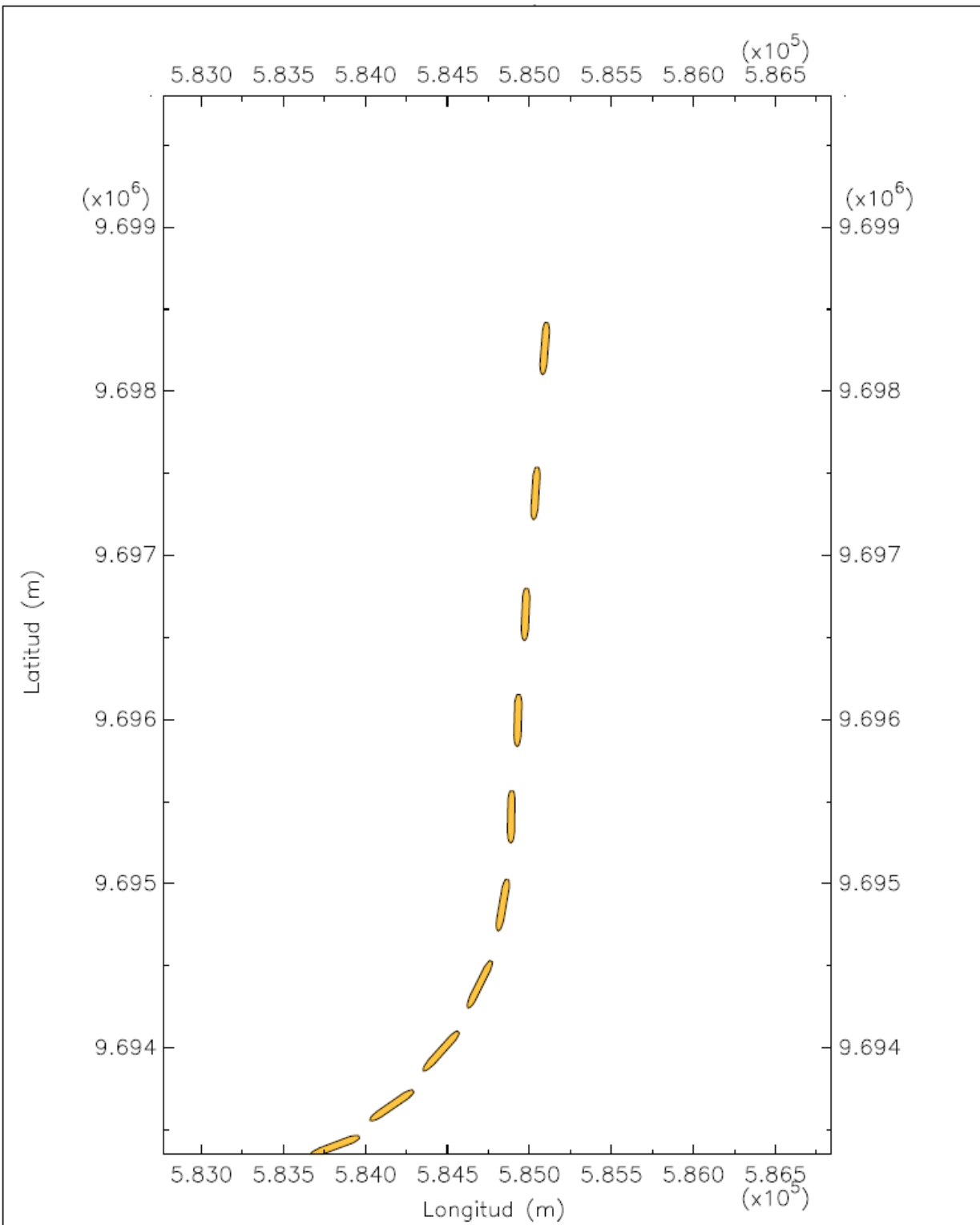
Z1T1 Trayectoria del portacontenedores post-panamax con corriente en reflujó



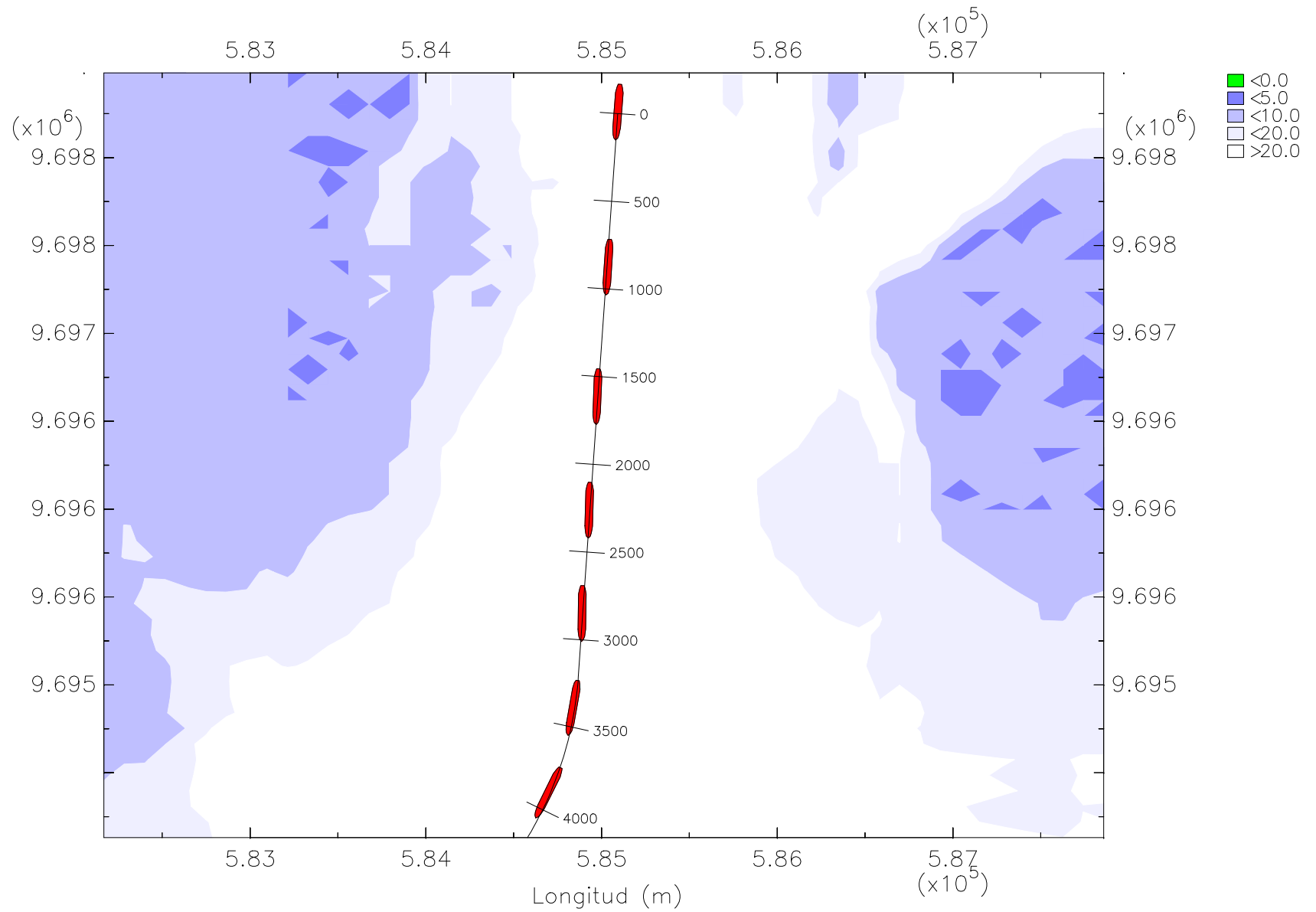
Zona 1 Tramo 1 Corriente en refluo

→ 0.500 m/s





Z1T1 Trayectoria del barco portacontenedores post-panamax en reflujo



Z1T1 Trayectoria del barco portacontenedores post-panamax en reflujó con prof