

Barco tipo granelero

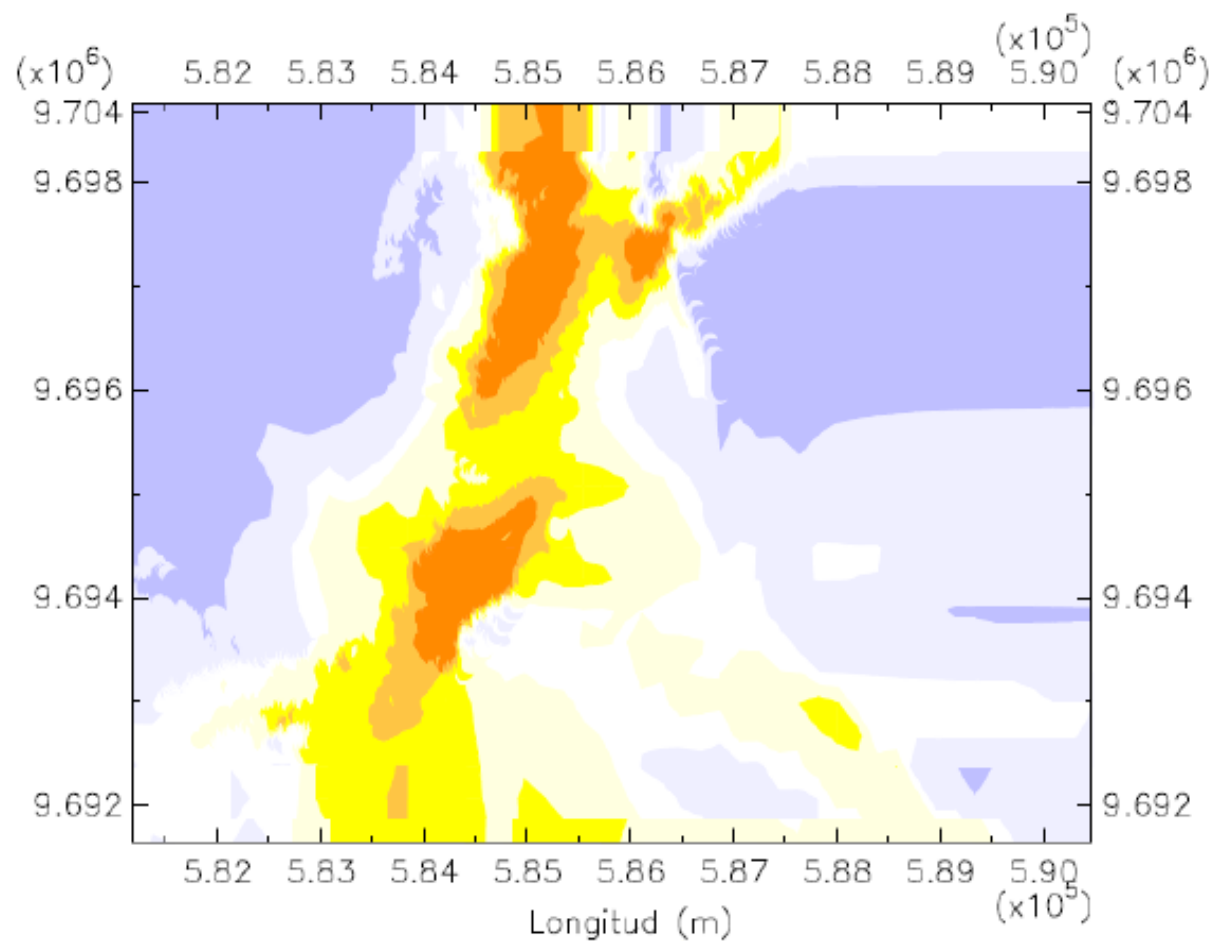
Eslora: 225 m

Manga: 32.20 m

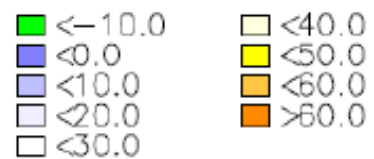
Calado: 12 m

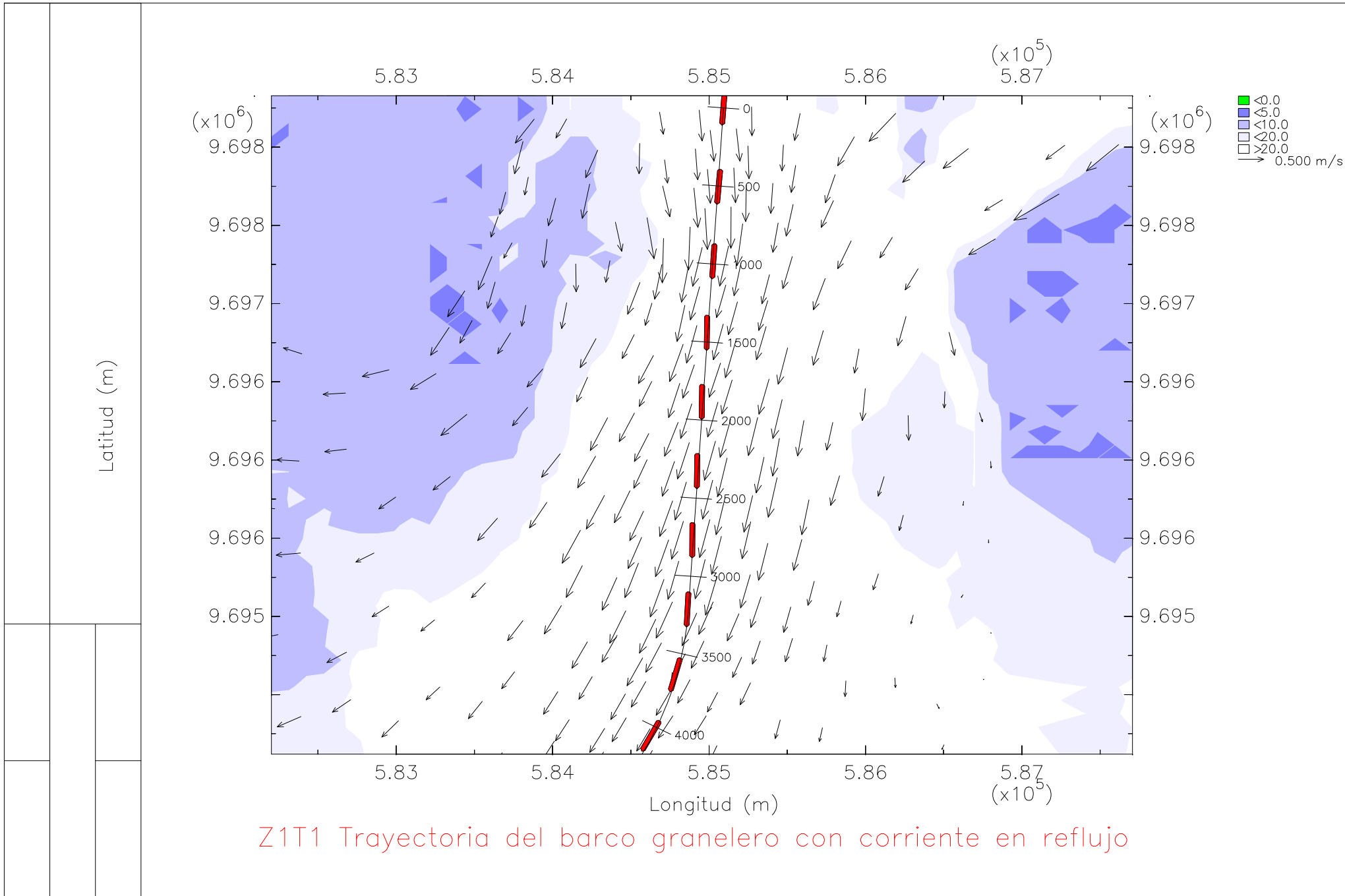
En la zona 1, tramo 1

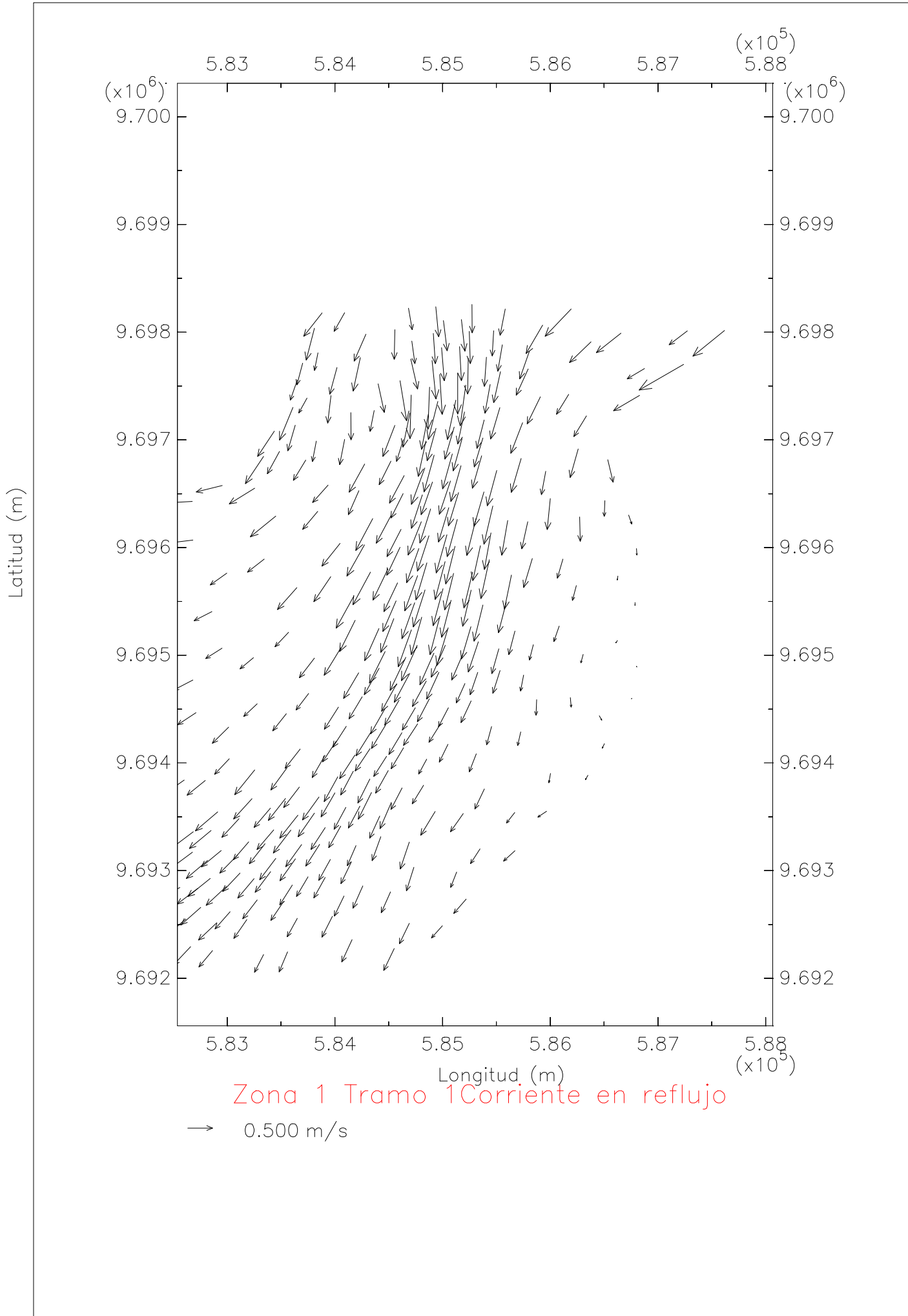
Bajo condiciones de vaciante



Zona 1 Tramo 1 Profundidad I

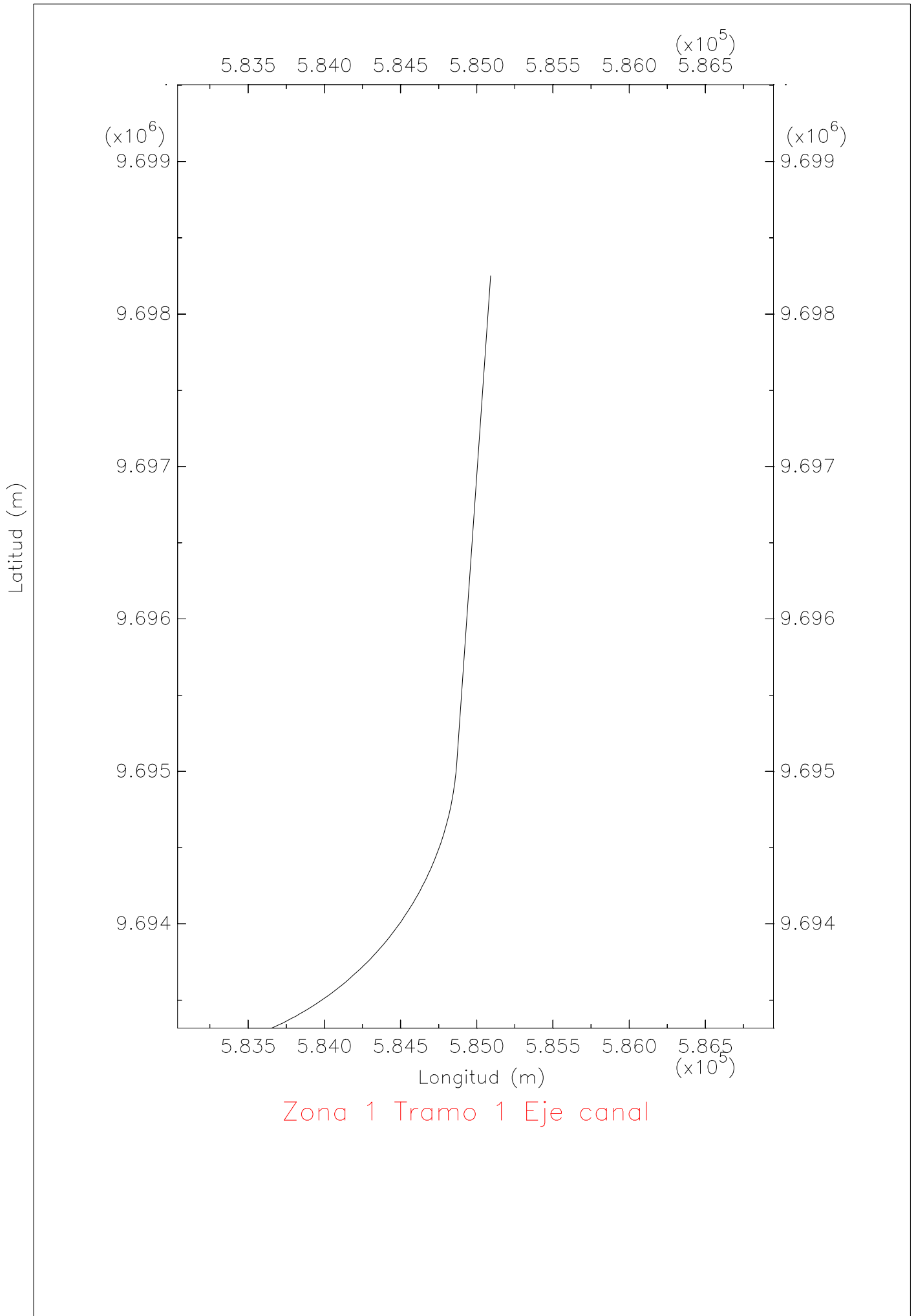


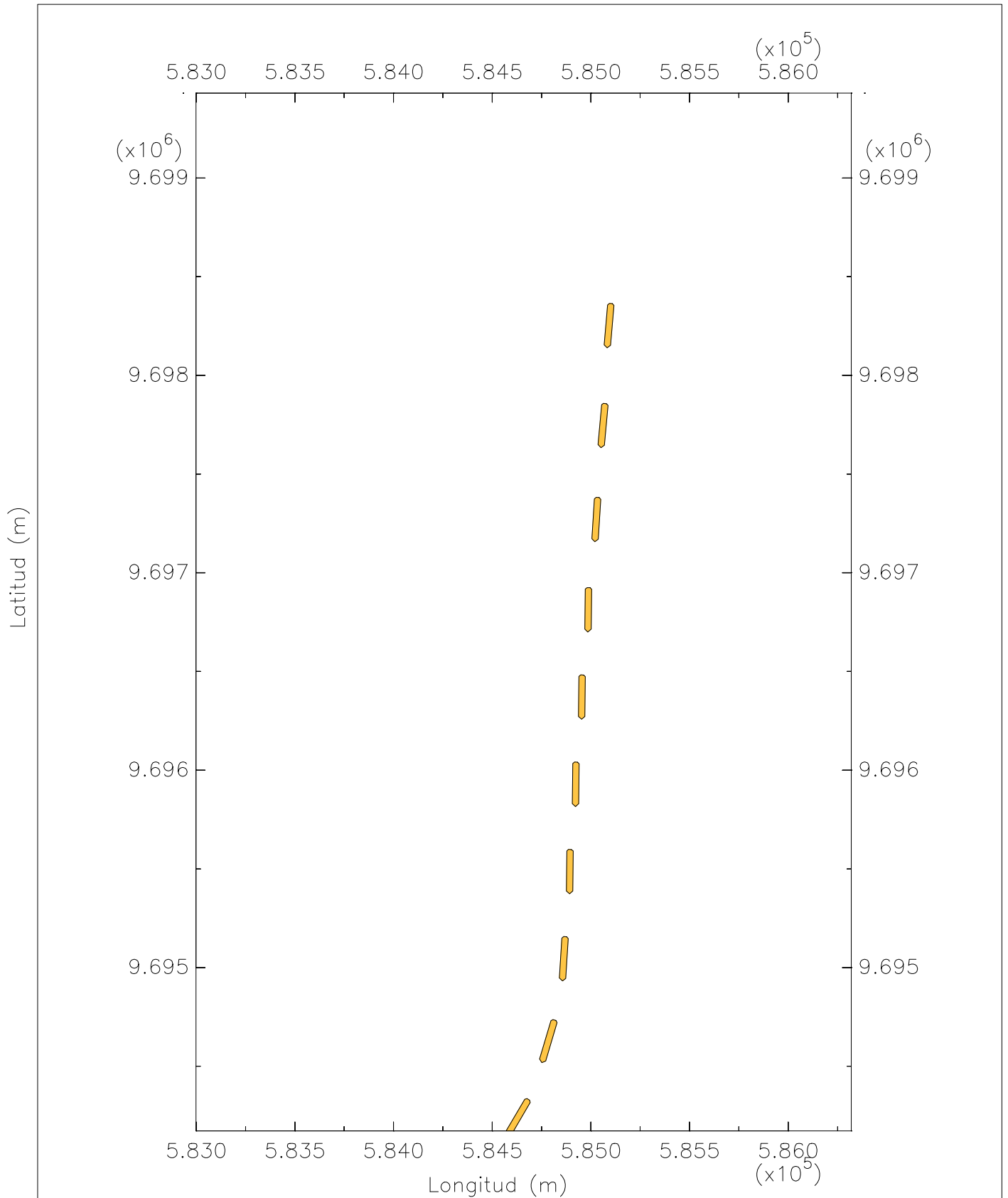




Zona 1 Tramo 1 Corriente en refluo

→ 0.500 m/s





Z1T1 Trayectoria del barco granelero en reflujó

