

**Barco tipo granelero**

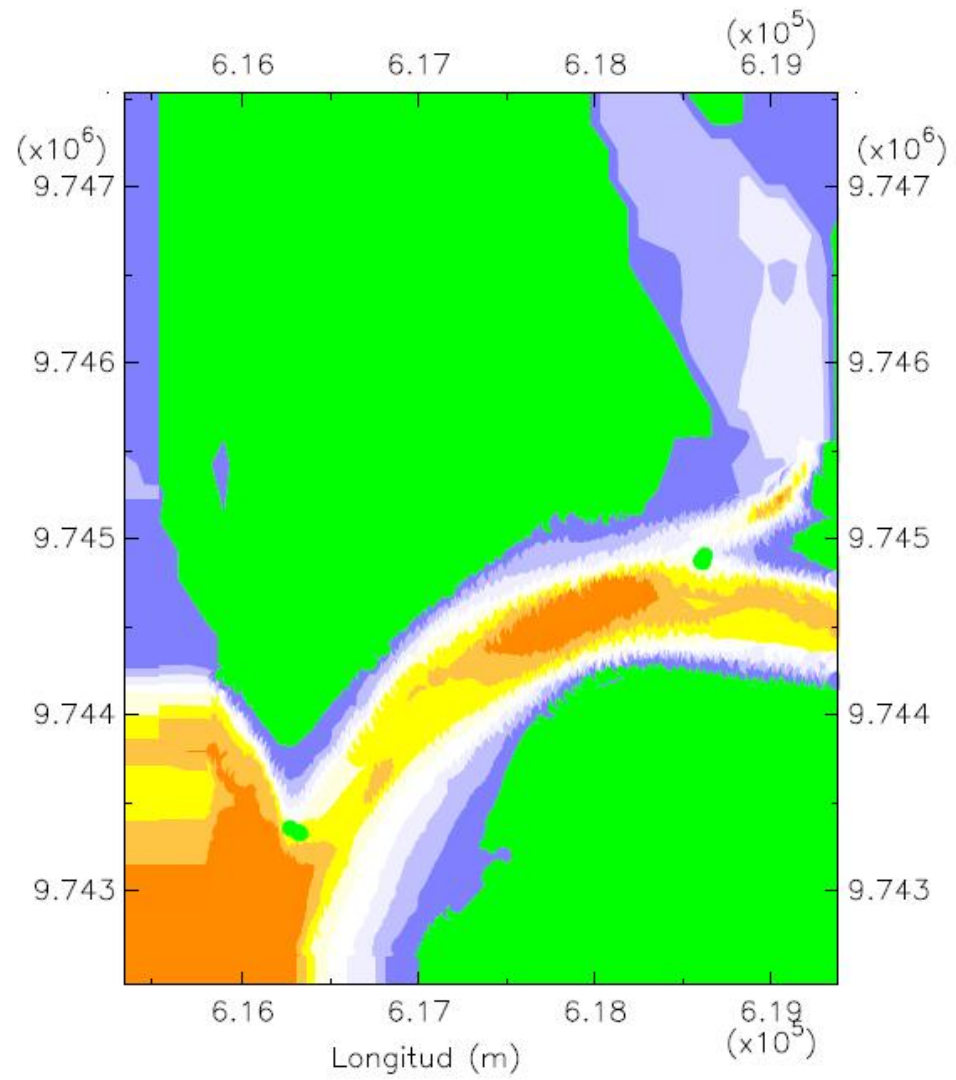
**Eslora: 225 m**

**Manga: 32.20 m**

**Calado: 12 m**

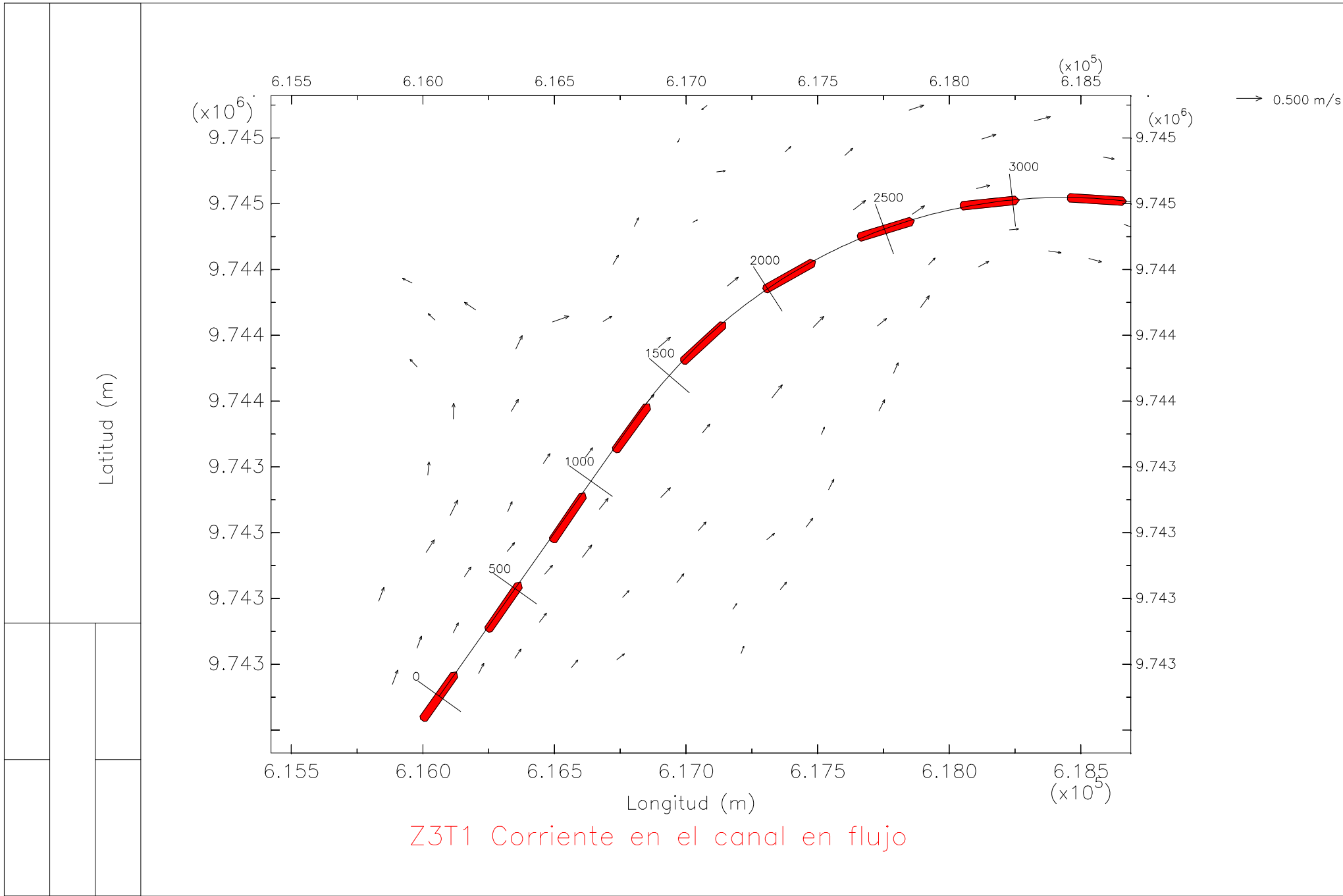
**En la zona 3, tramo 1**

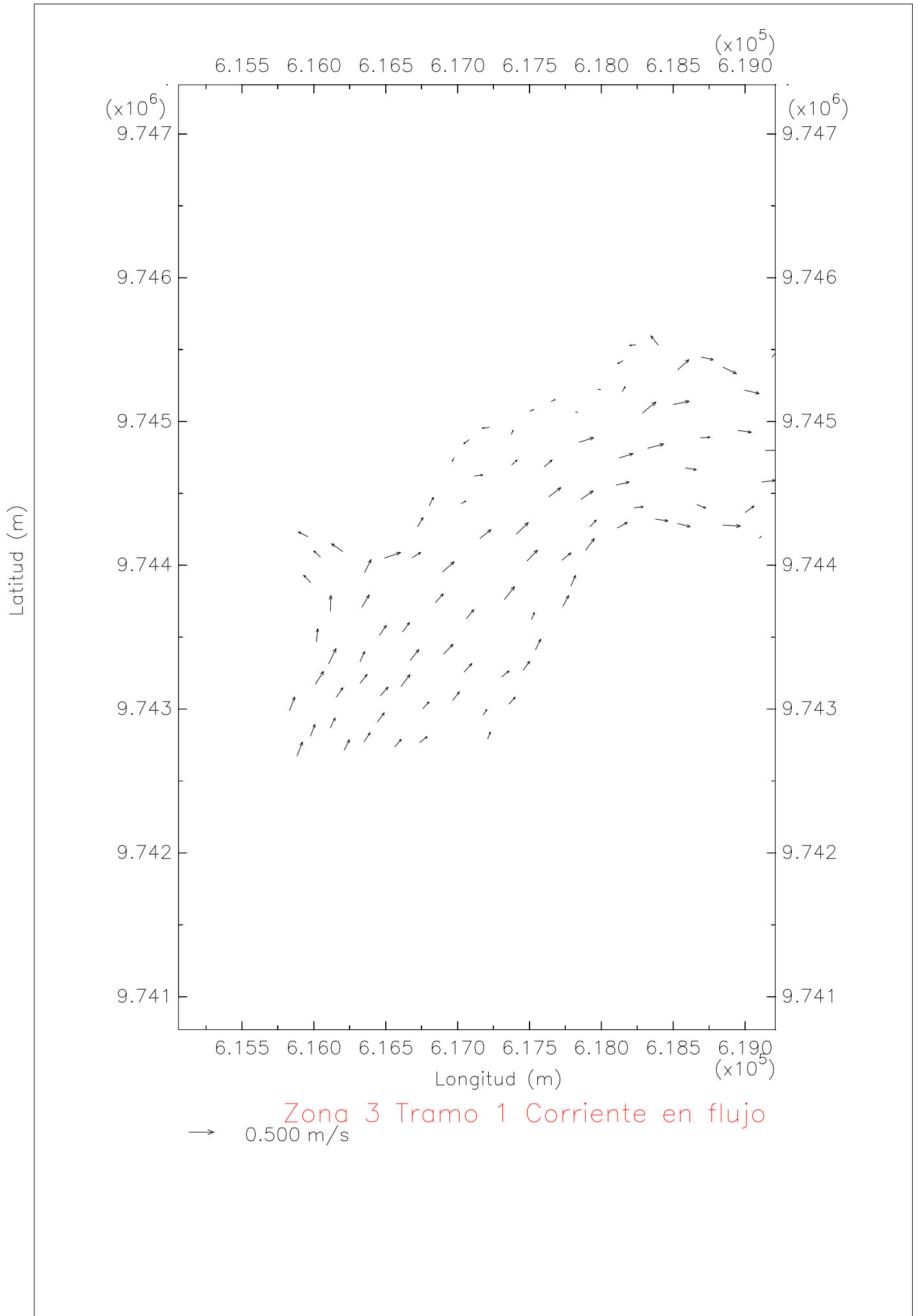
**Bajo condiciones de llenante**

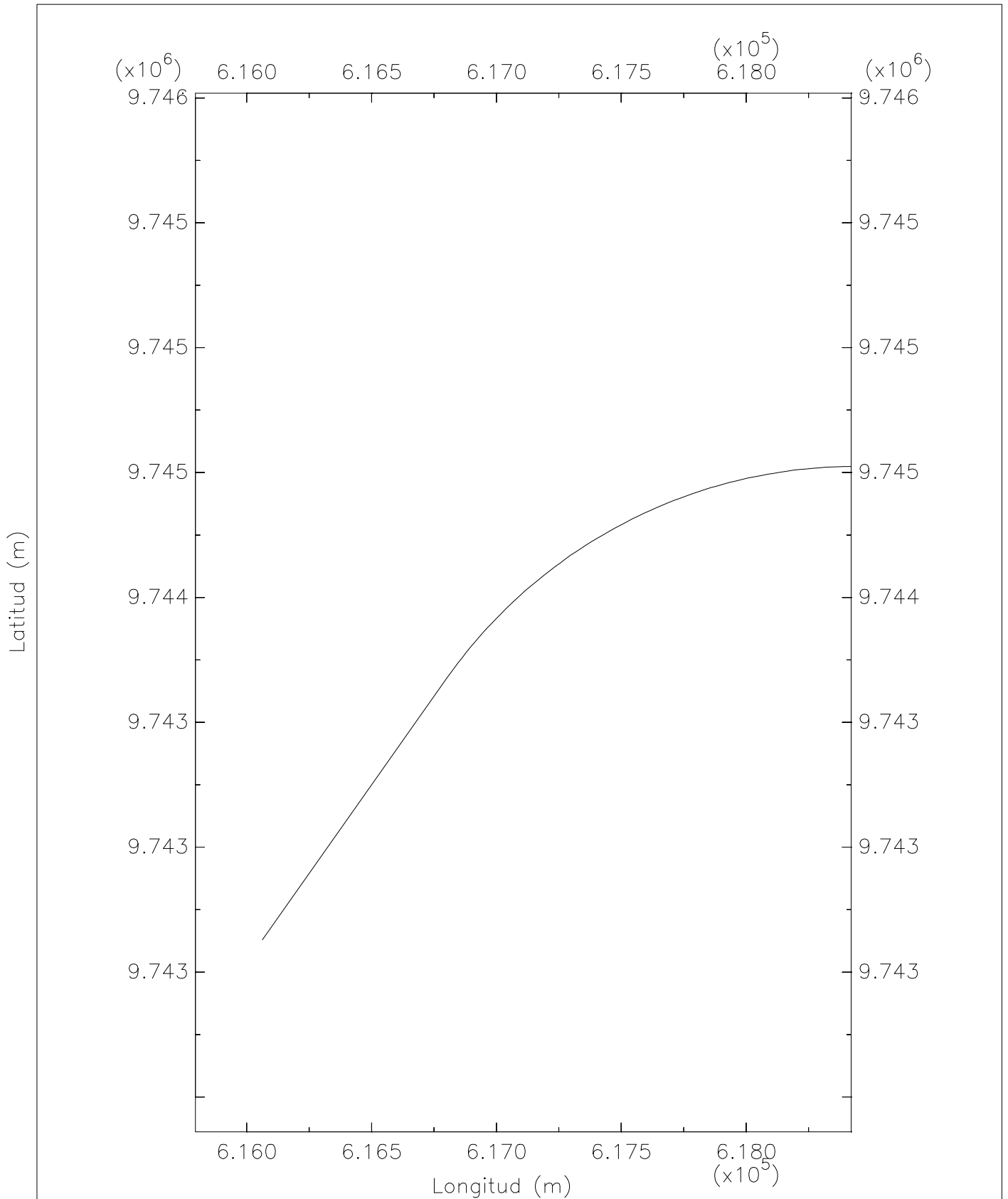


Zona 3 Tramo 1 Profundidad

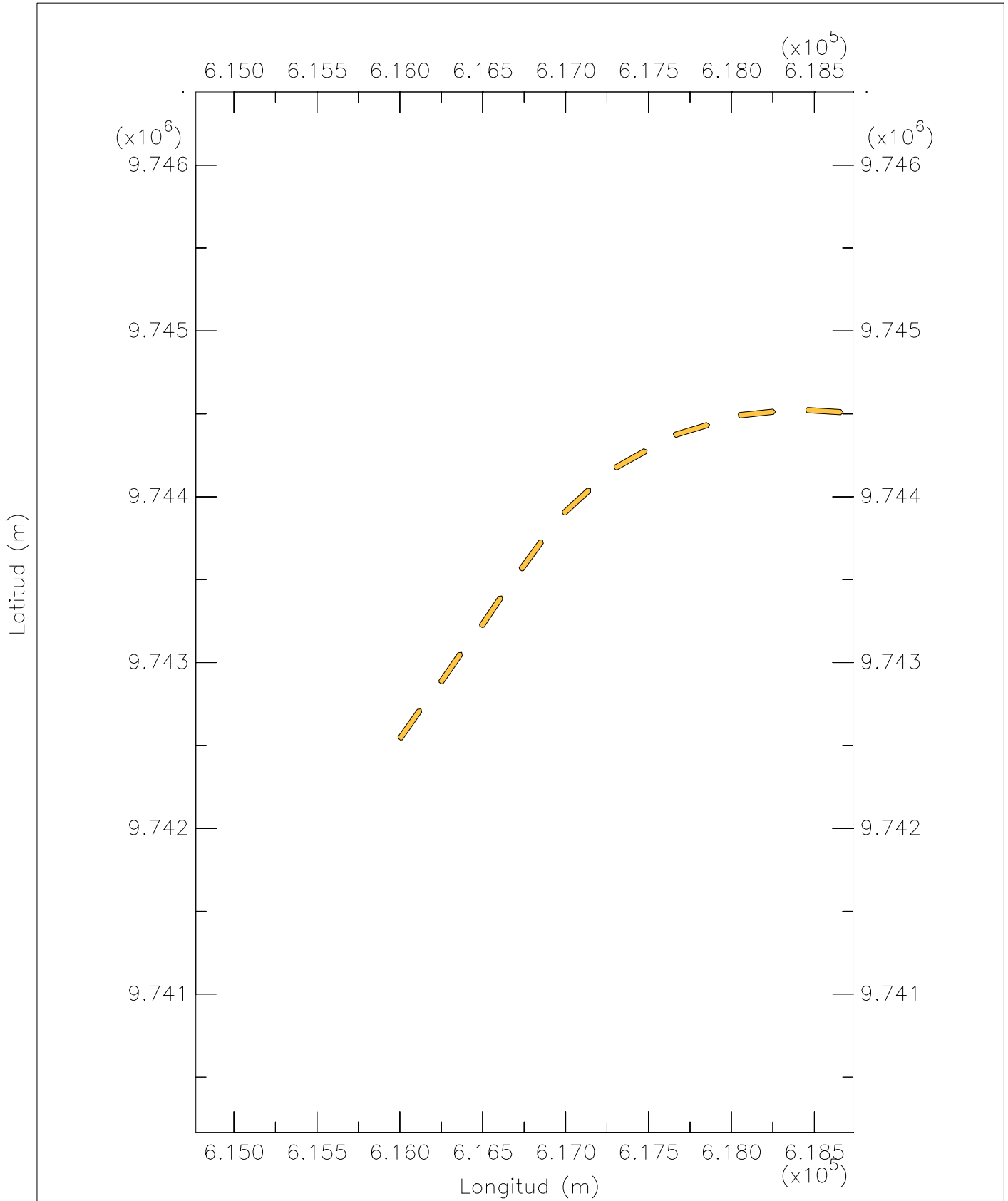
- |  |  |
|--|--|
| <span style="color: green;">■</span> < 2.0     | <span style="color: lightblue;">■</span> < 12.0  |
| <span style="color: blue;">■</span> < 4.0      | <span style="color: yellow;">■</span> < 14.0     |
| <span style="color: lightblue;">■</span> < 6.0 | <span style="color: orange;">■</span> < 16.0     |
| <span style="color: white;">■</span> < 8.0     | <span style="color: darkorange;">■</span> < 18.0 |
| <span style="color: white;">■</span> < 10.0    | <span style="color: darkorange;">■</span> > 18.0 |



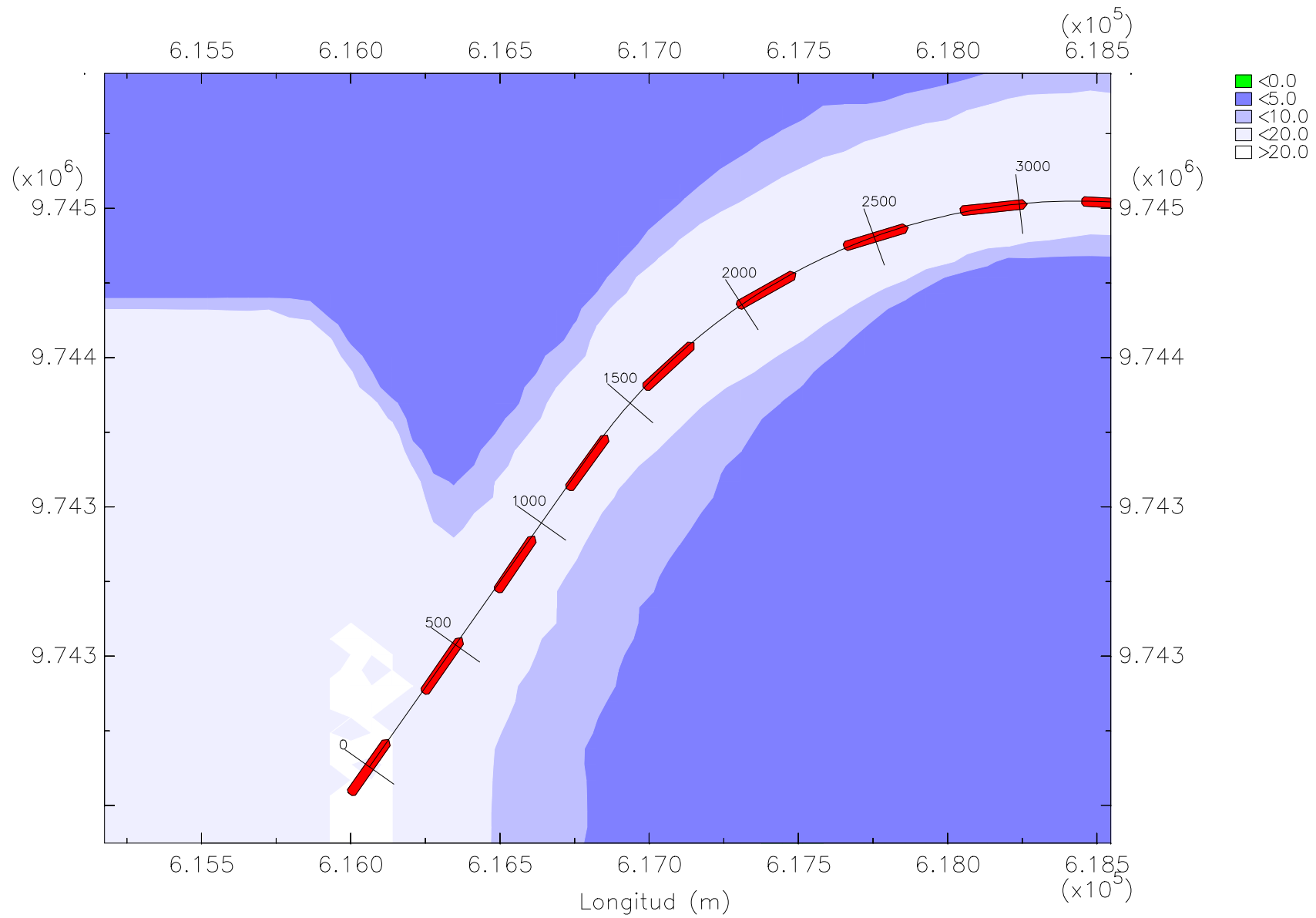




Zona 3 Tramo 1 Eje del canal



Z3T1 Trayectoria del barco granelero en flujo



Z3T1 Trayectoria del barco granelero en flujo