

Barco portacontenedores

Tipo panamax

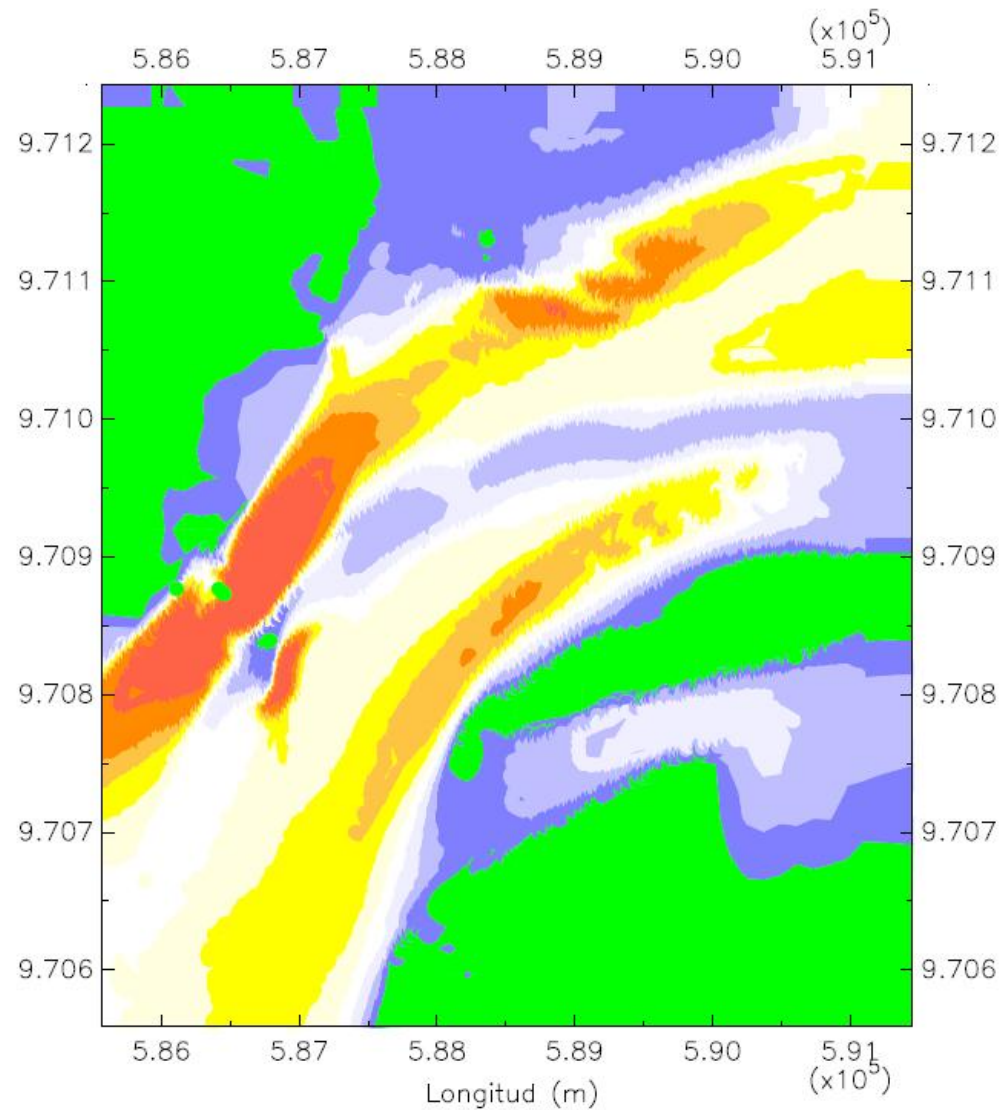
Eslora: 289 m

Manga: 32.20 m

Calado: 11.60 m

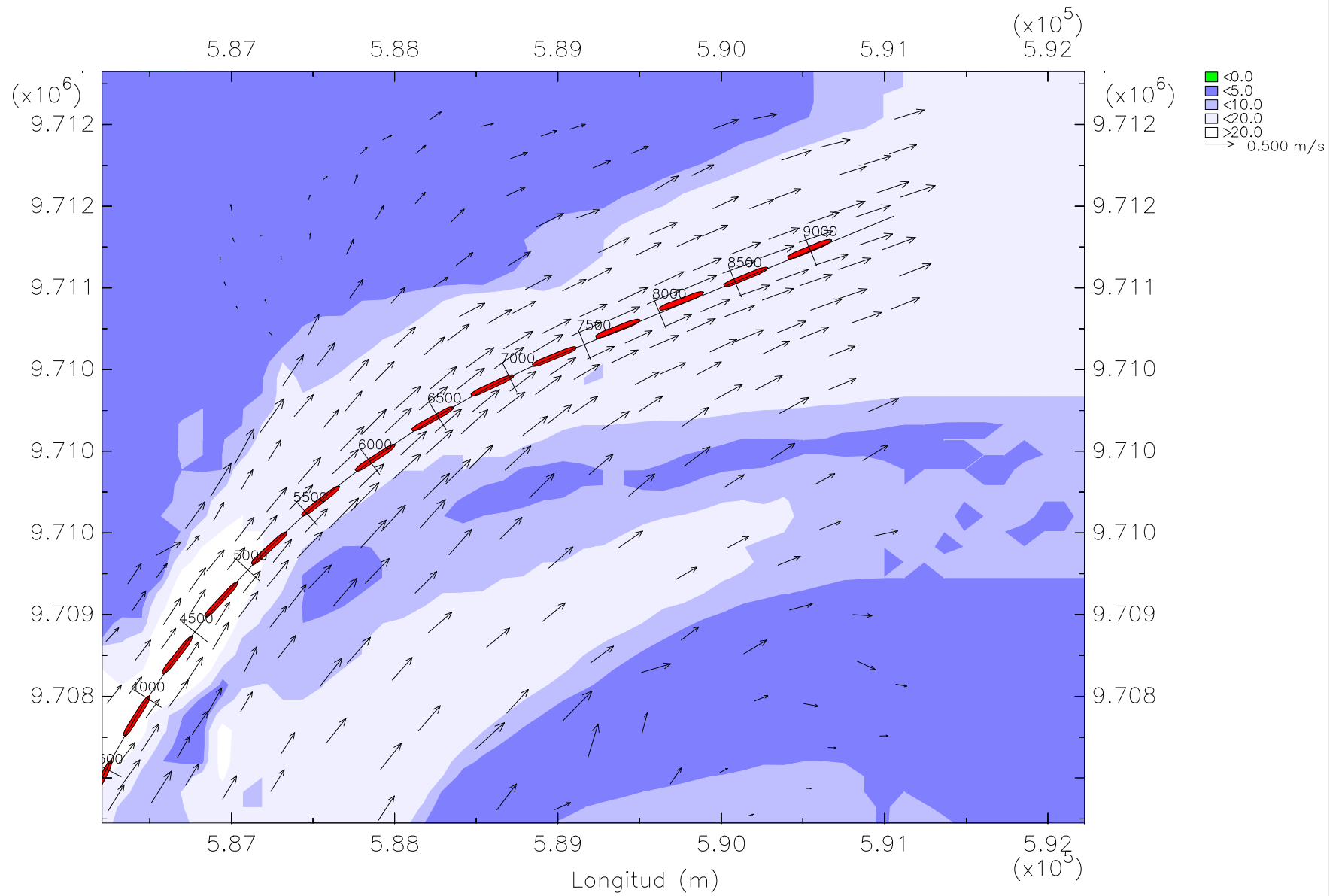
En la zona 2, tramo 2

Bajo condiciones de llenante

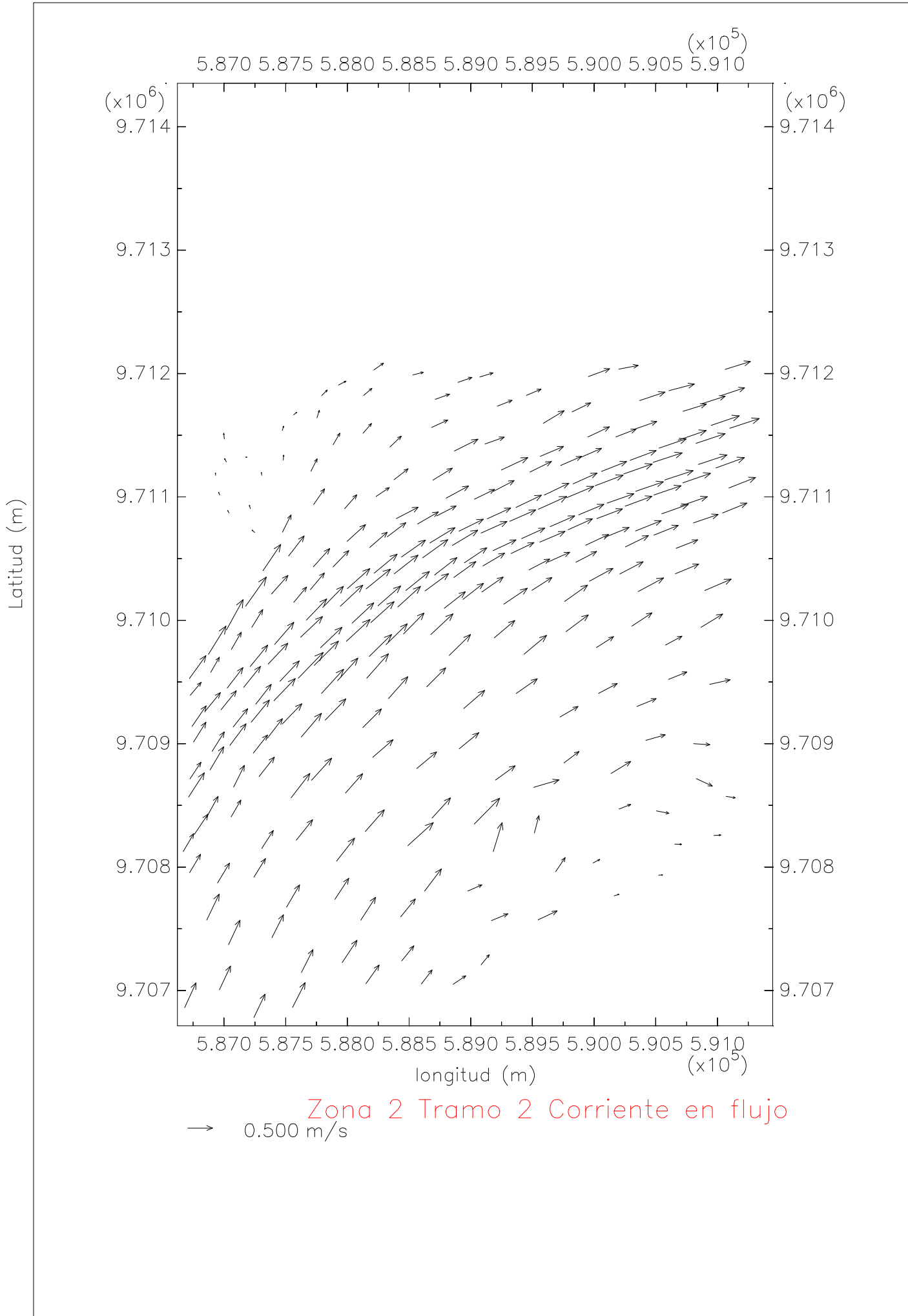


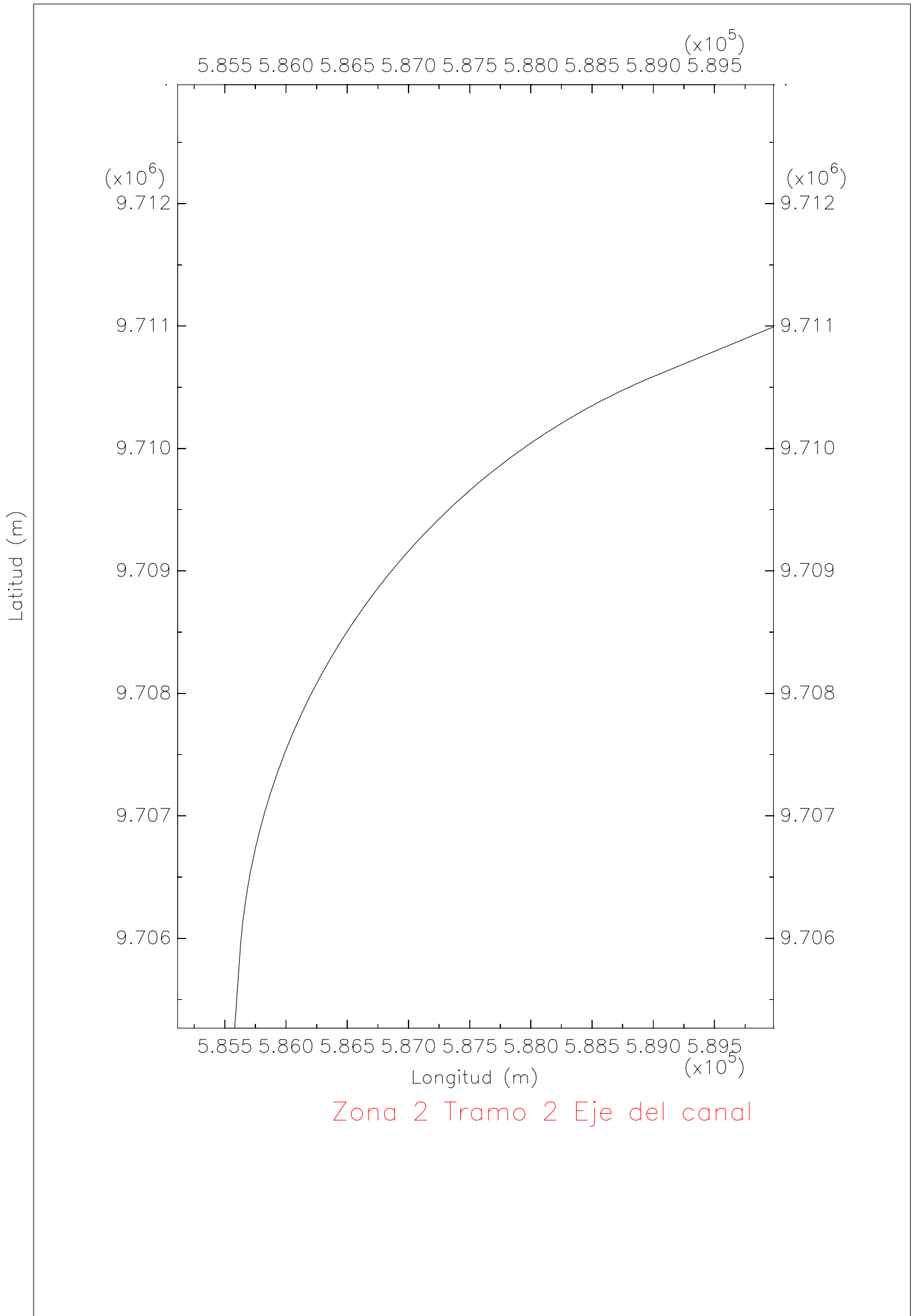
Zona 2 Tramo 2 Profundidad

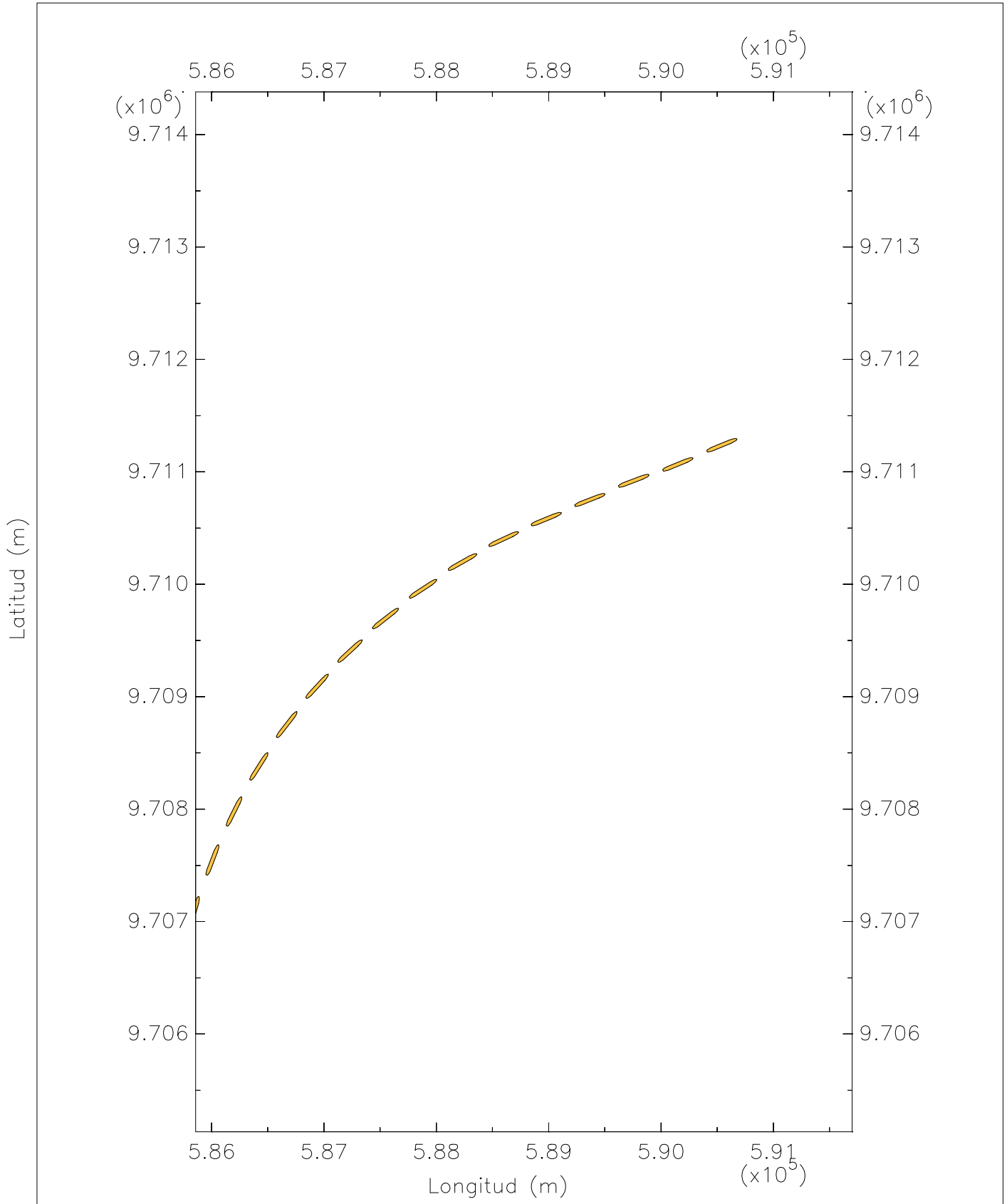




Z2T2 Corriente en flujo con trayectoria del portacontenedores panamax

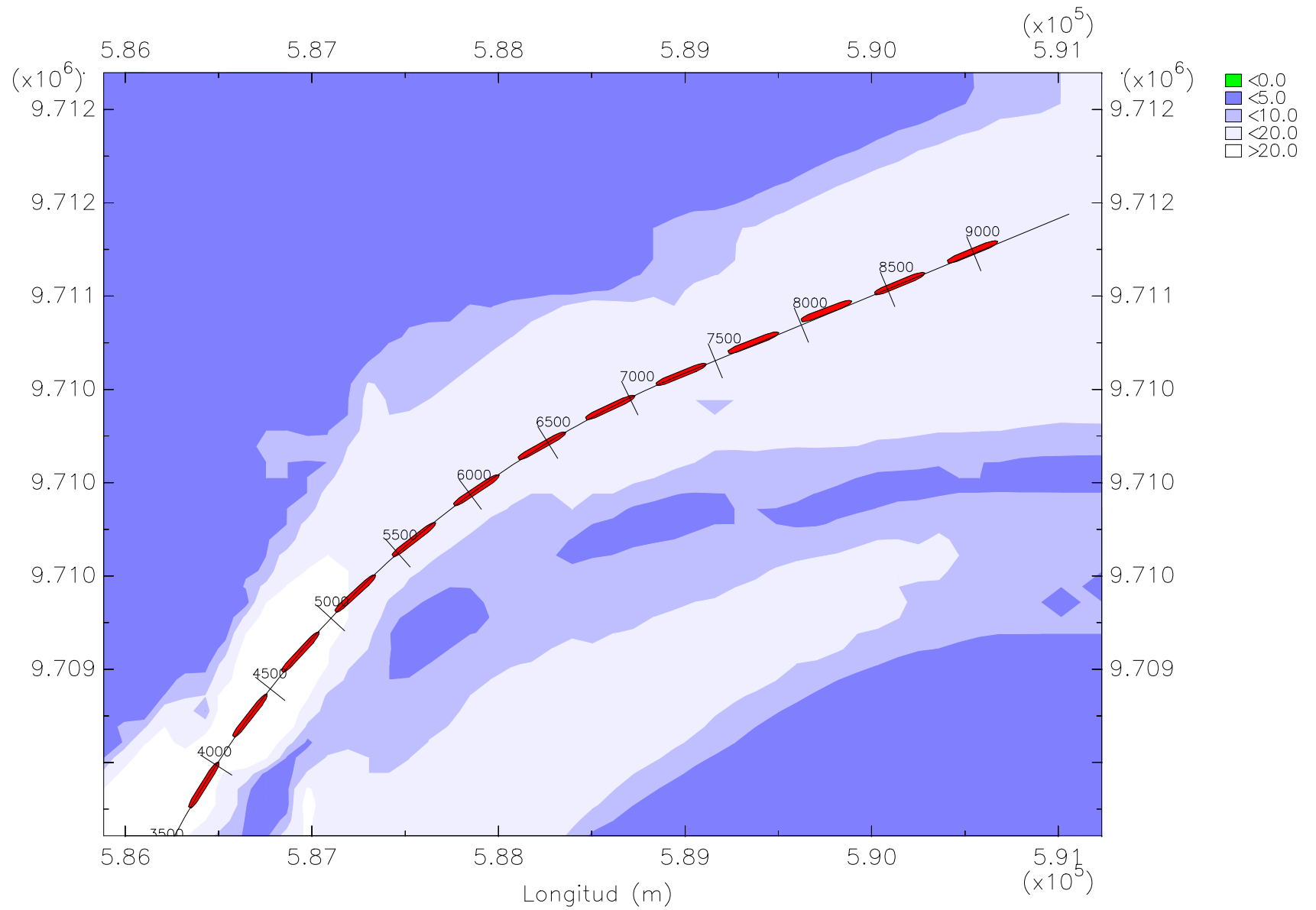






Z2T1 Trayectoria del barco portacontenedores panamax en flujo

Latitud (m)



Z2T2 Trayectoria del barco portacontenedores panamax en flujo