

**Barco tipo granelero**

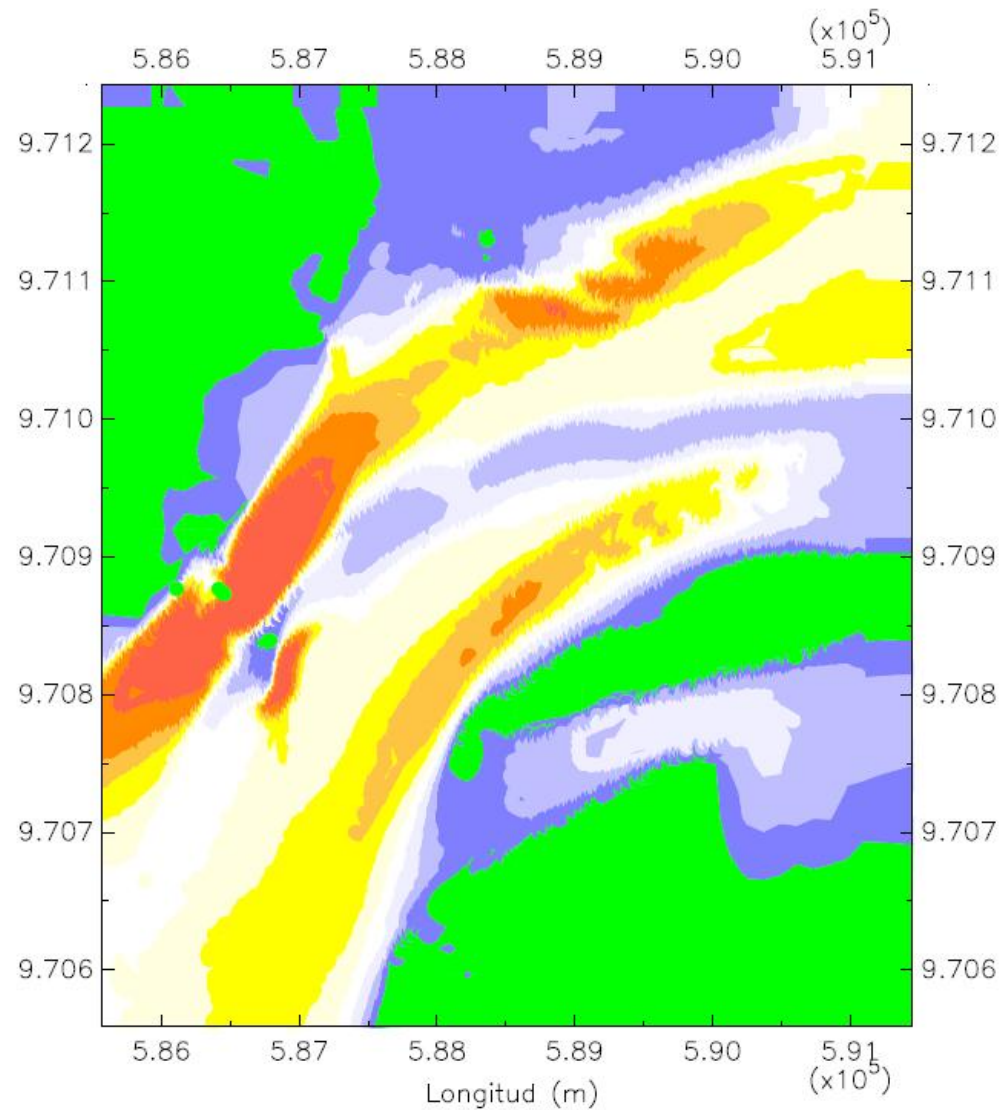
**Eslora: 225 m**

**Manga: 32.20 m**

**Calado: 12 m**

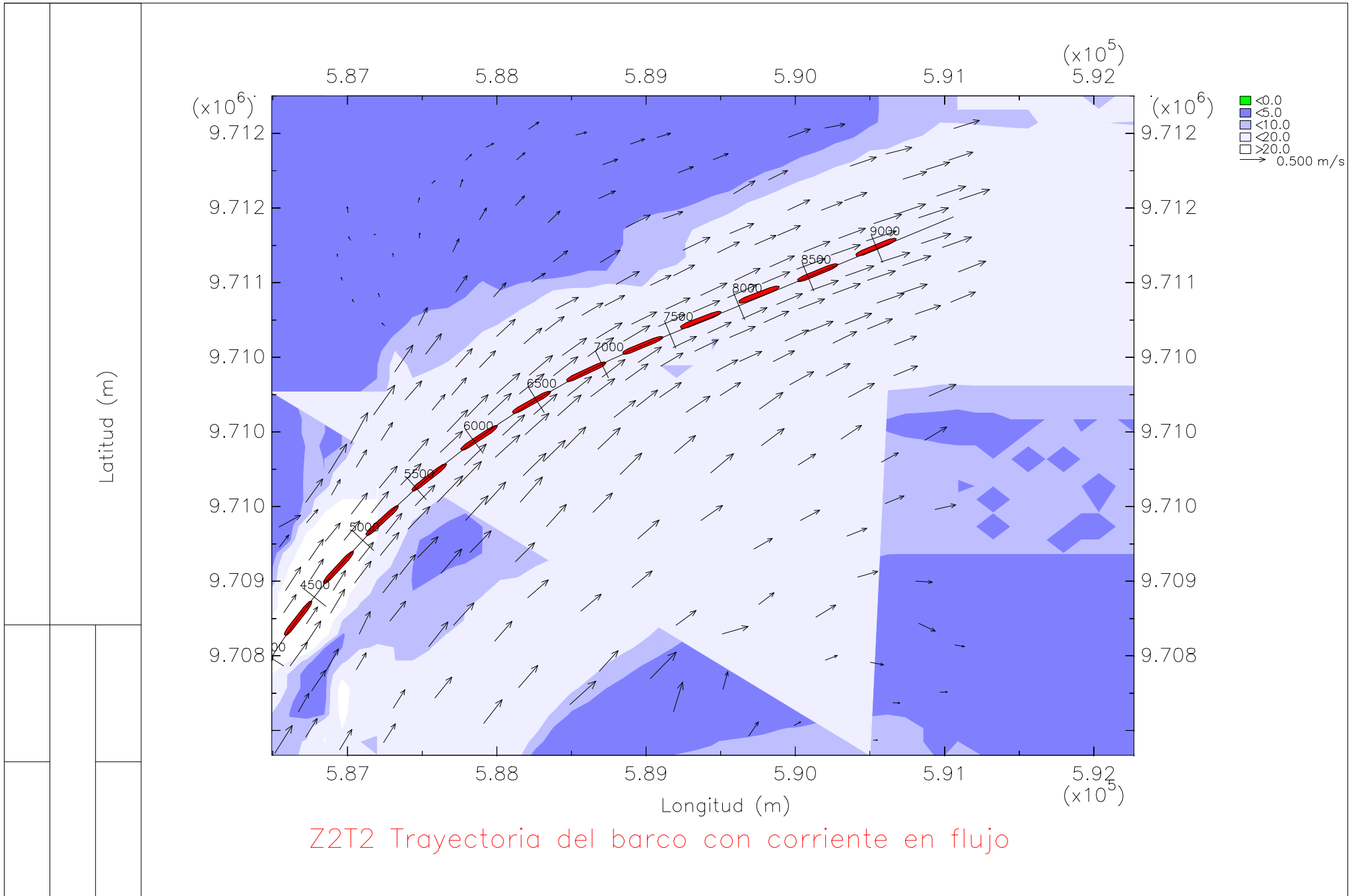
**En la zona 2, tramo 2**

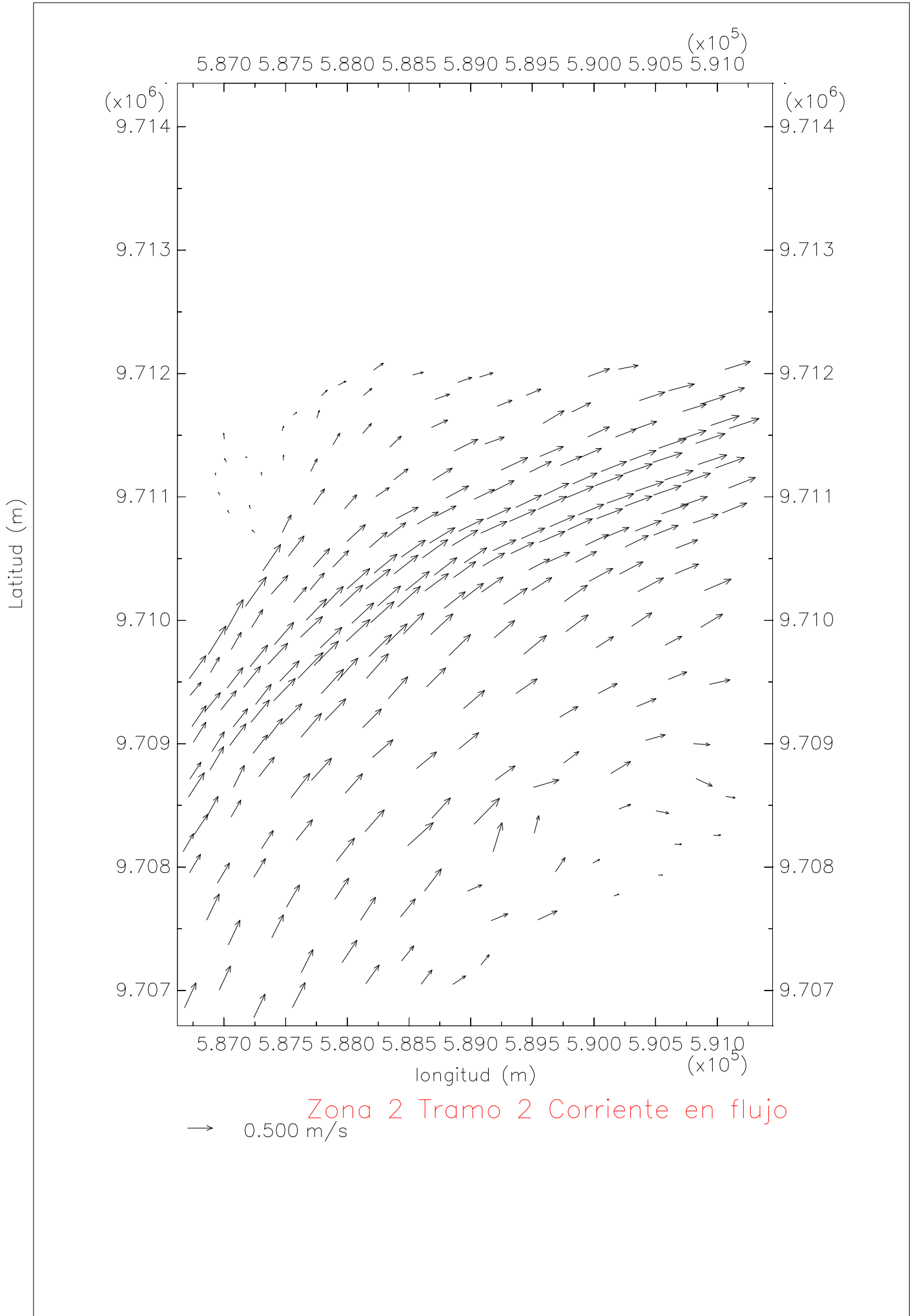
**Bajo condiciones de llenante**

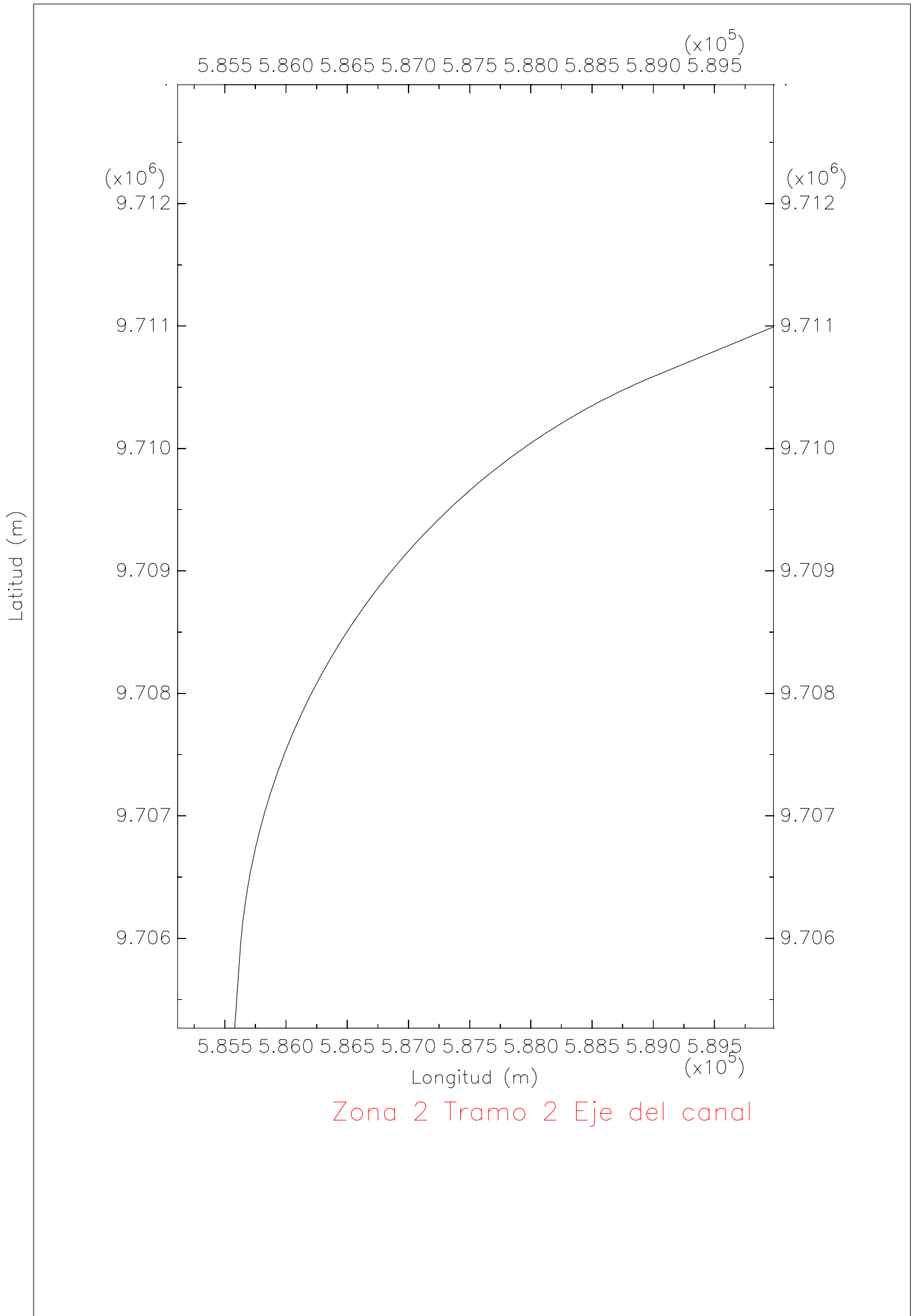


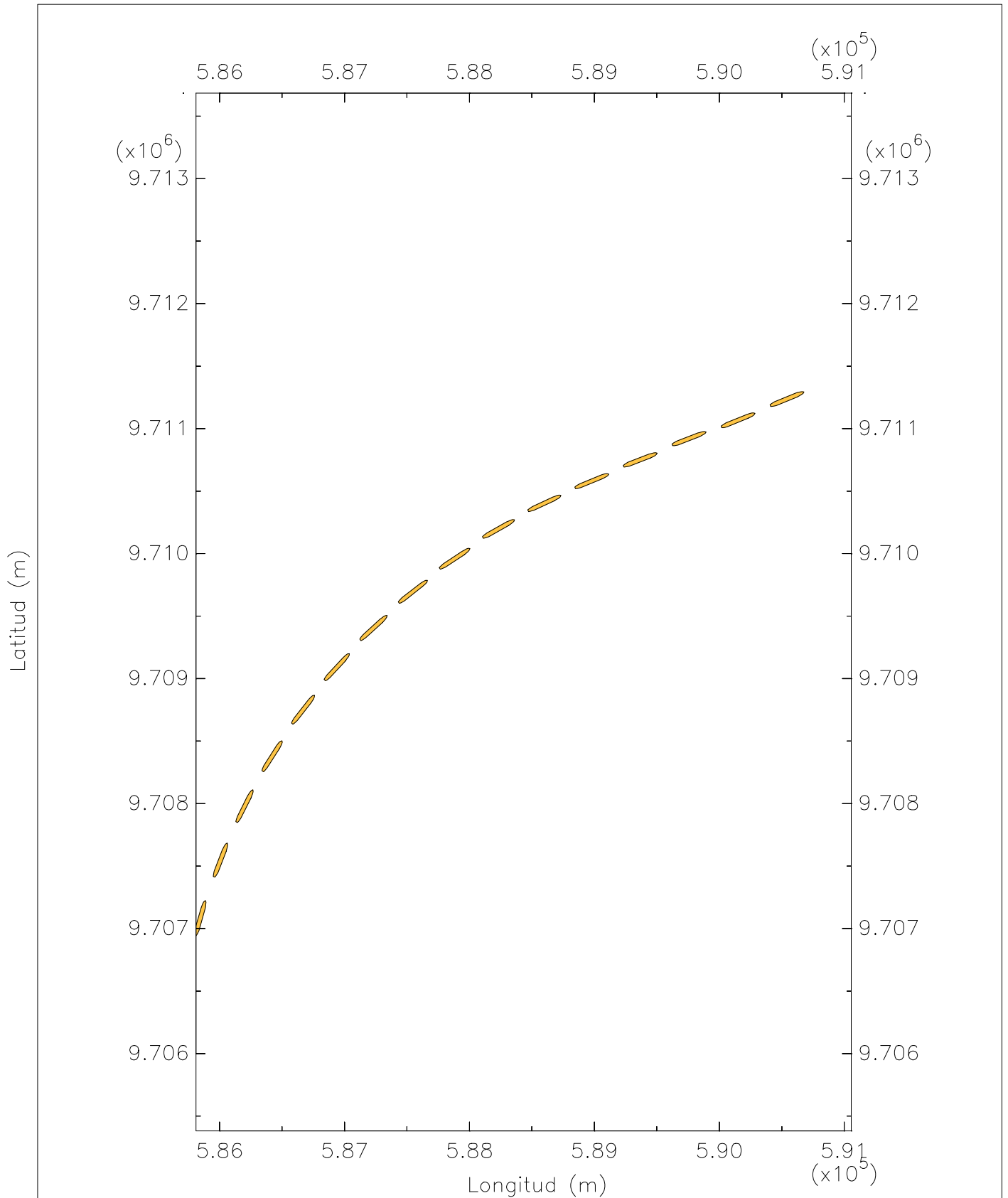
Zona 2 Tramo 2 Profundidad



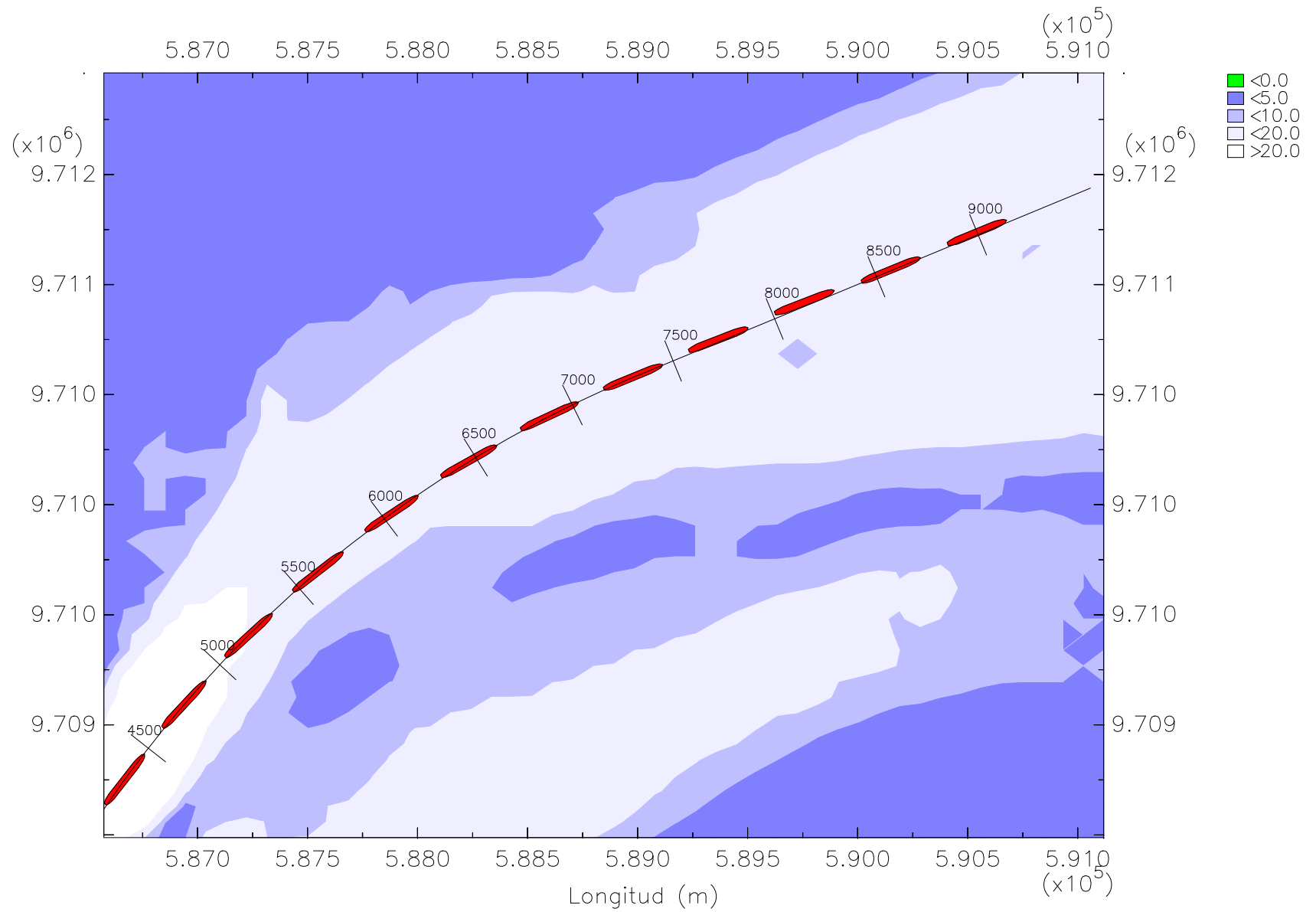








Z2T2 Trayectoria del barco granelero en flujo



Z2T2 Trayectoria del barco granelero con profundidad en flujo