

Barco tipo granelero

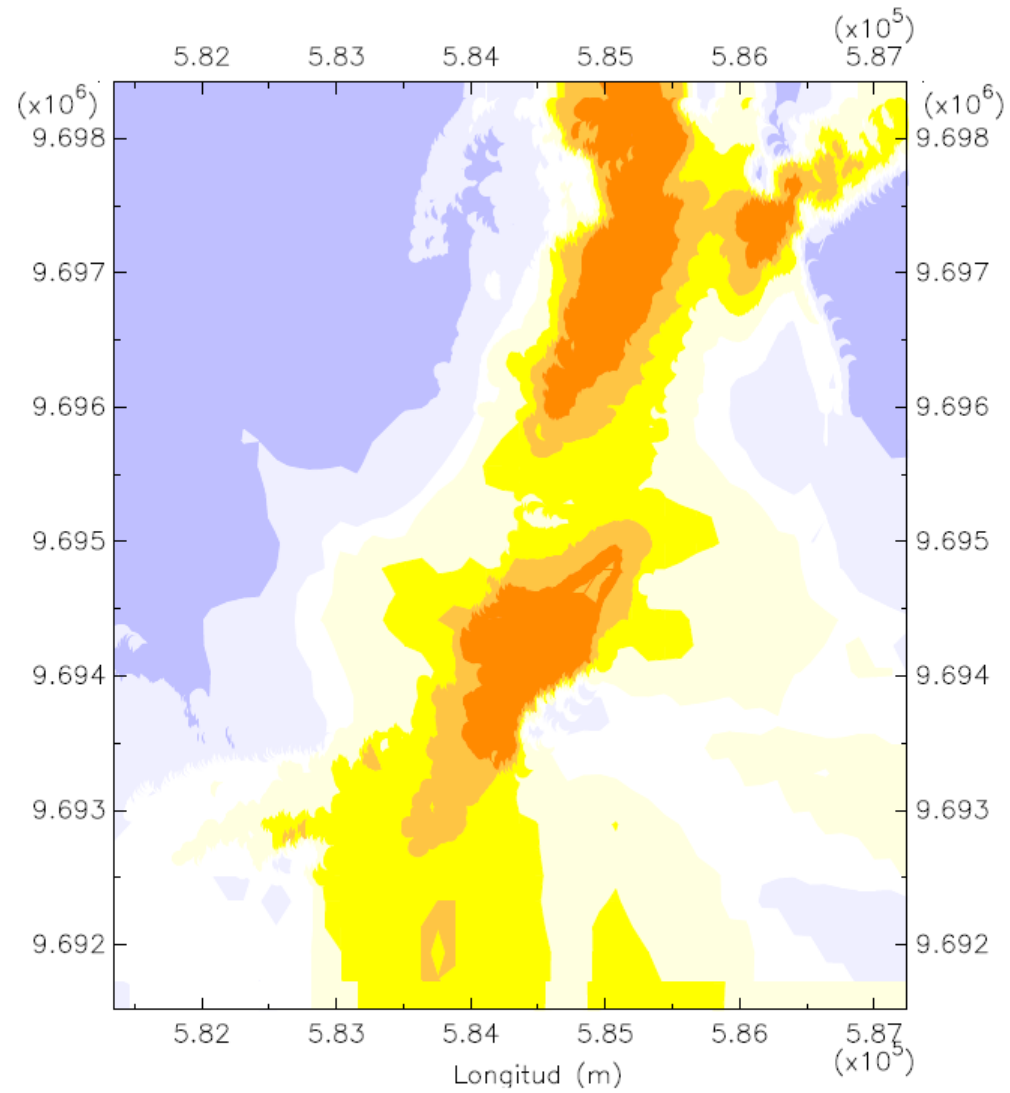
Eslora: 225 m

Manga: 32.20 m

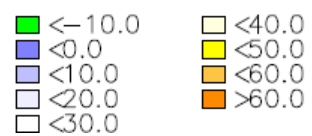
Calado: 12 m

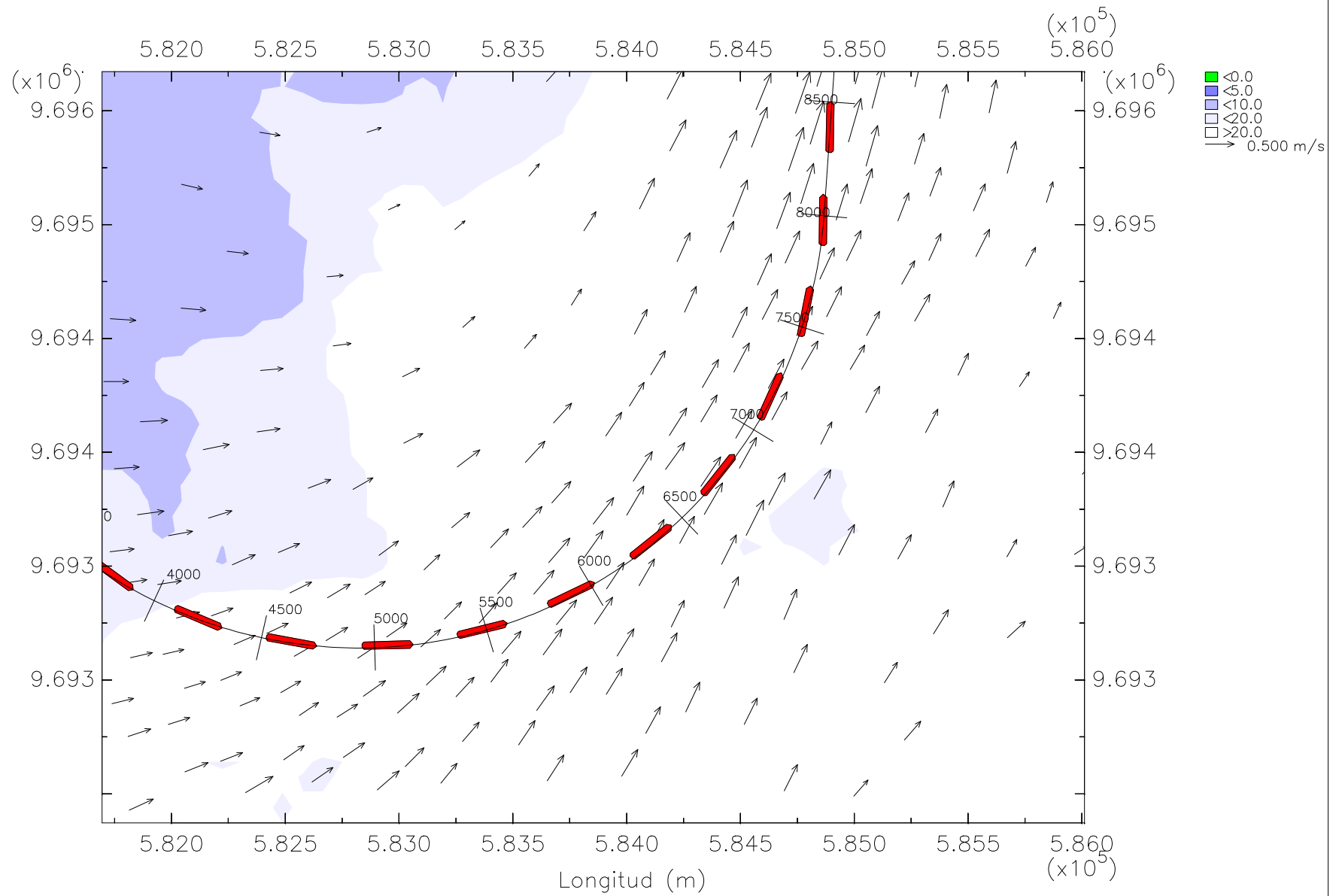
En la zona 1, tramo 2

Bajo condiciones de llenante

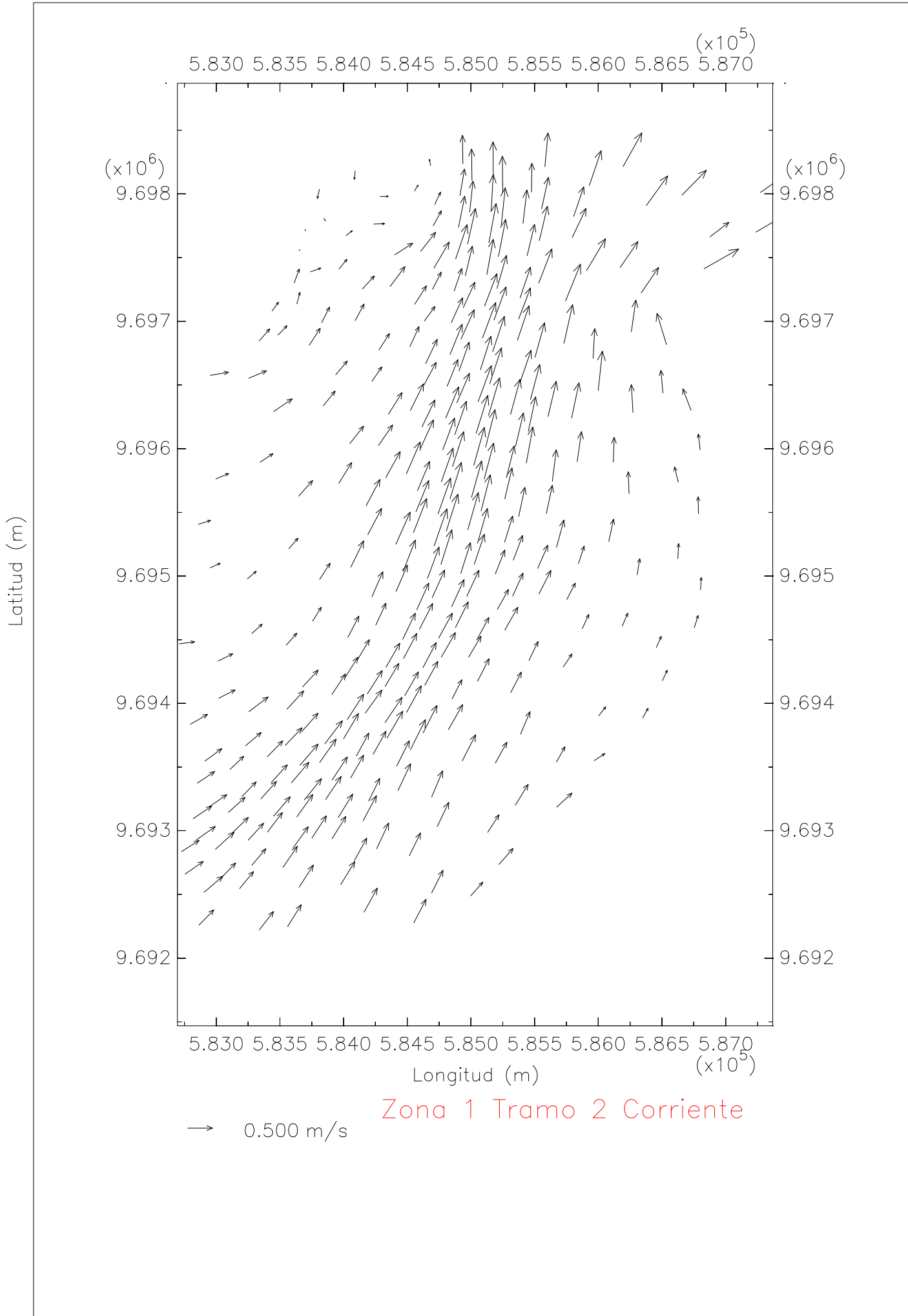


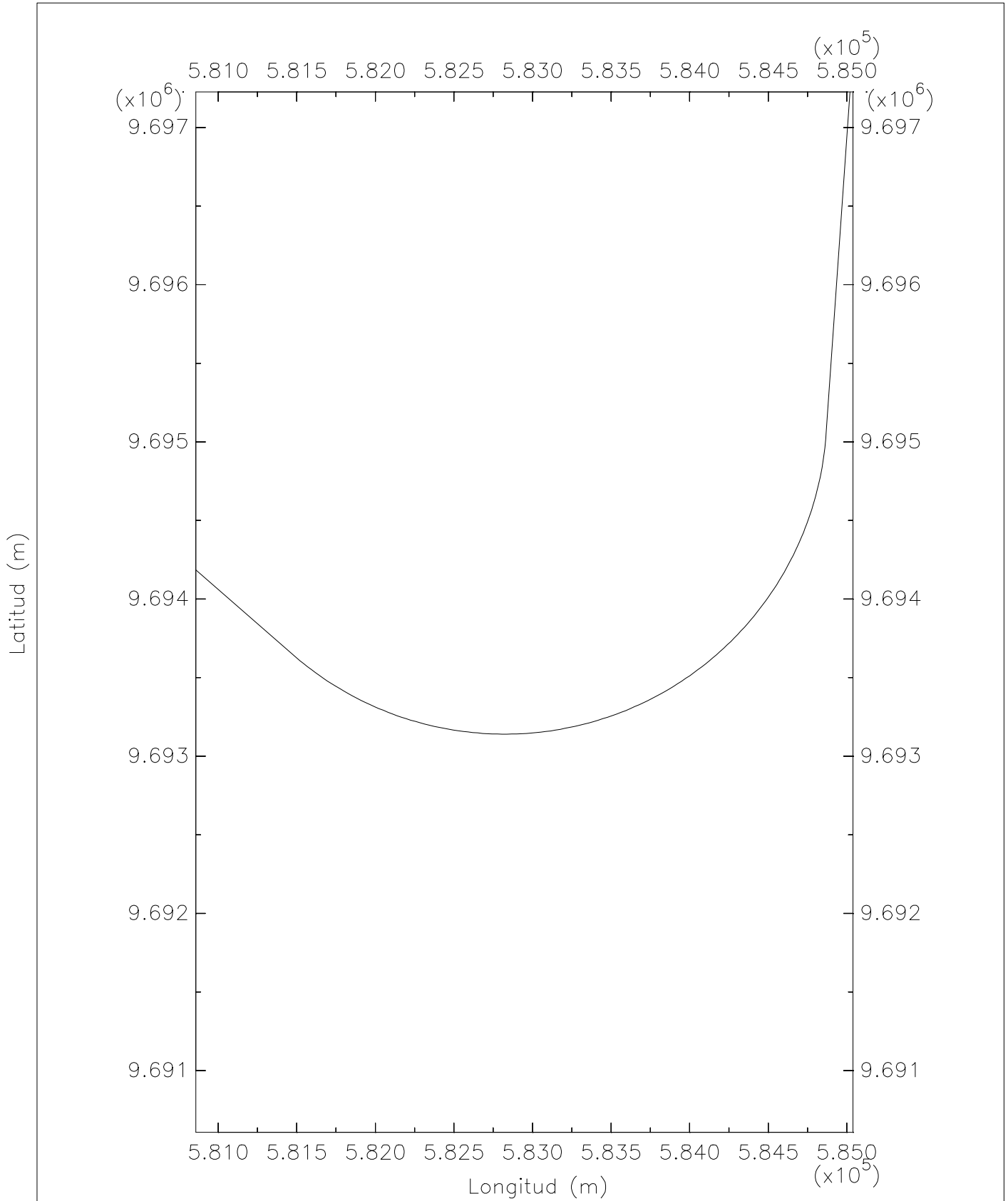
Zona 1 Tramo 2 Profundidad



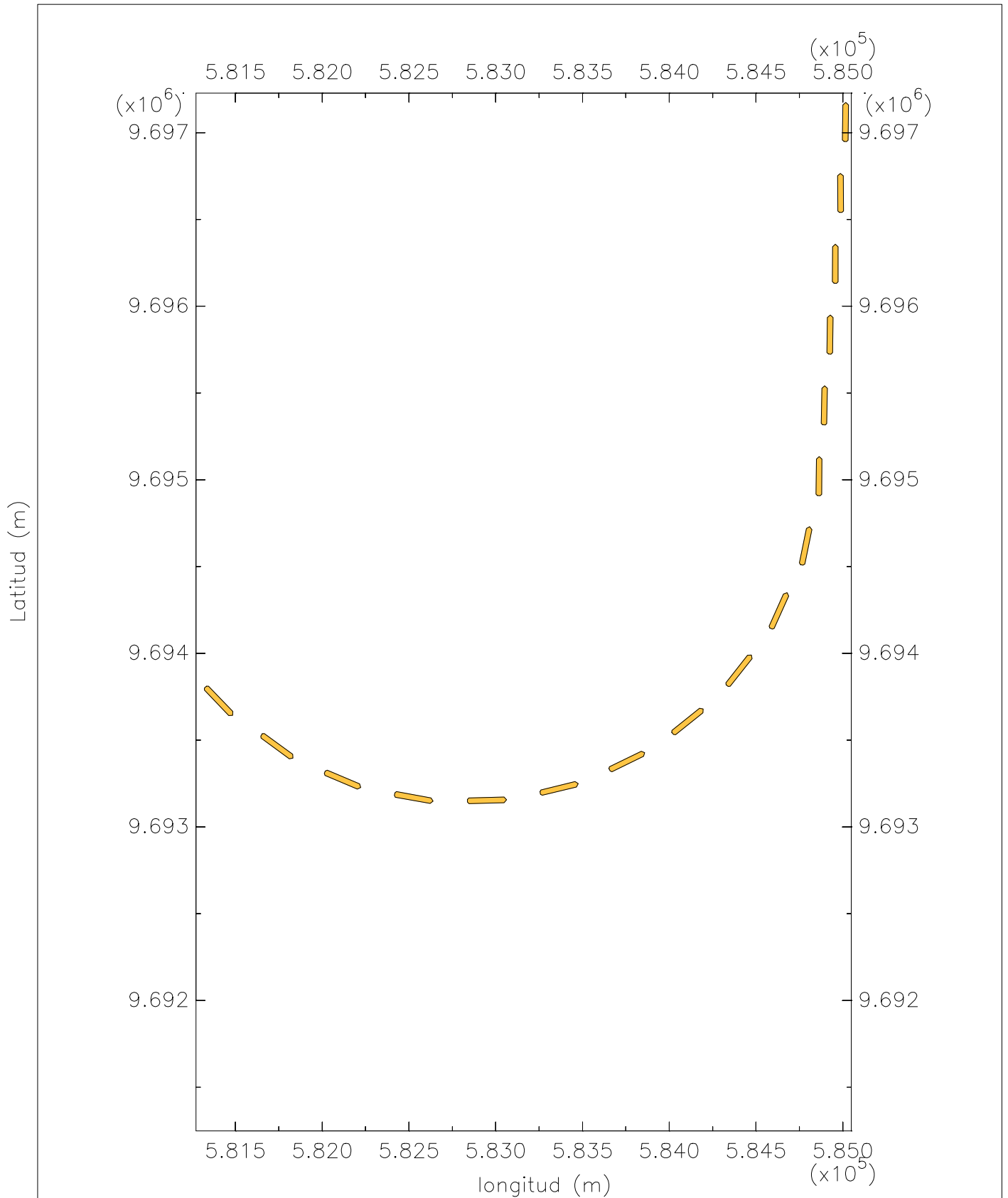


Z1FBGT2 Corriente con trayectoria del barco

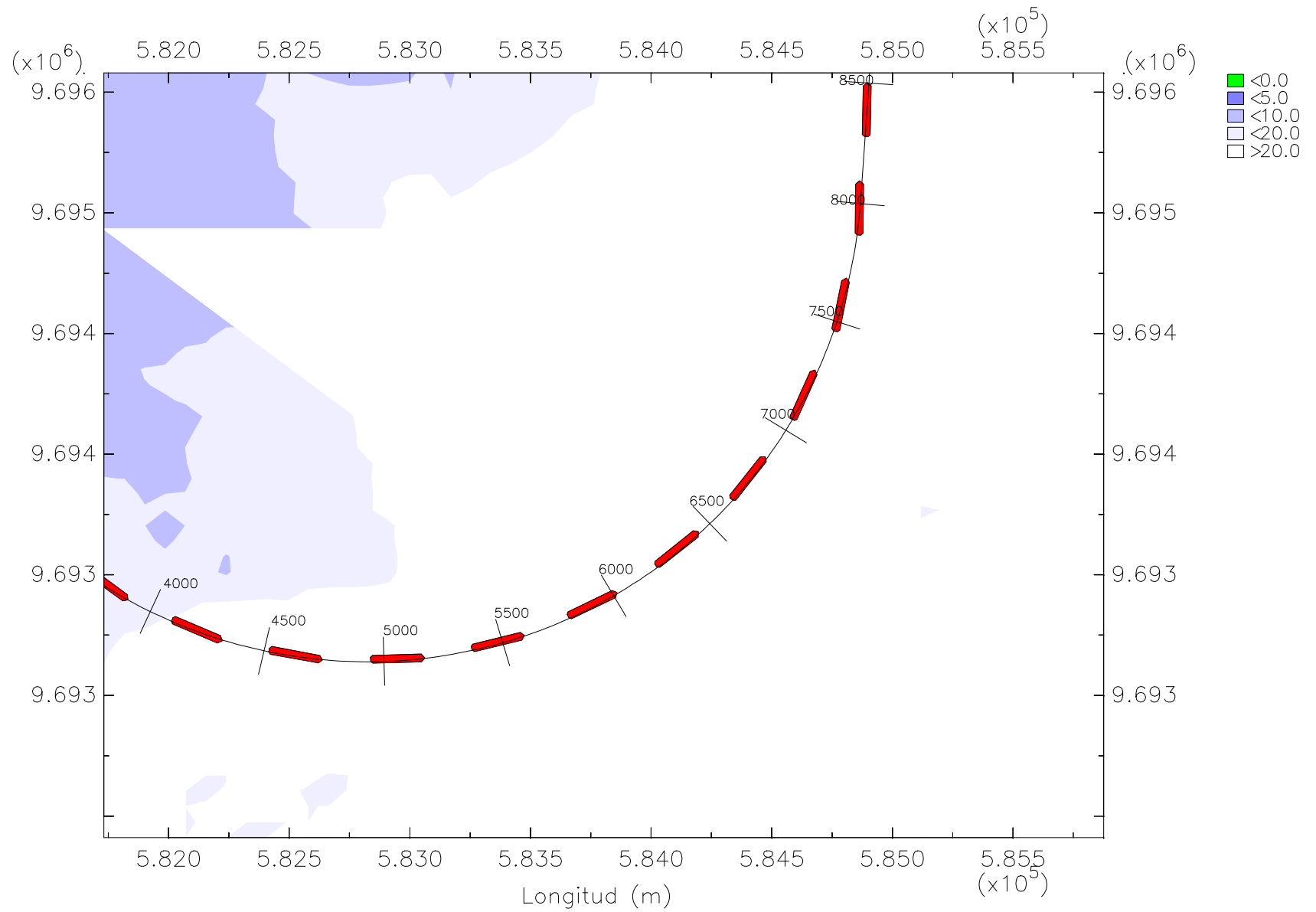




Zona 1 Tramo 2 Eje canal



Zona 1 Tramo 2 Trayectoria del barco granelero



Z1FBGT2 Trayectoria del barco con profundidad