

## **Barco portacontenedores**

**Tipo panamax**

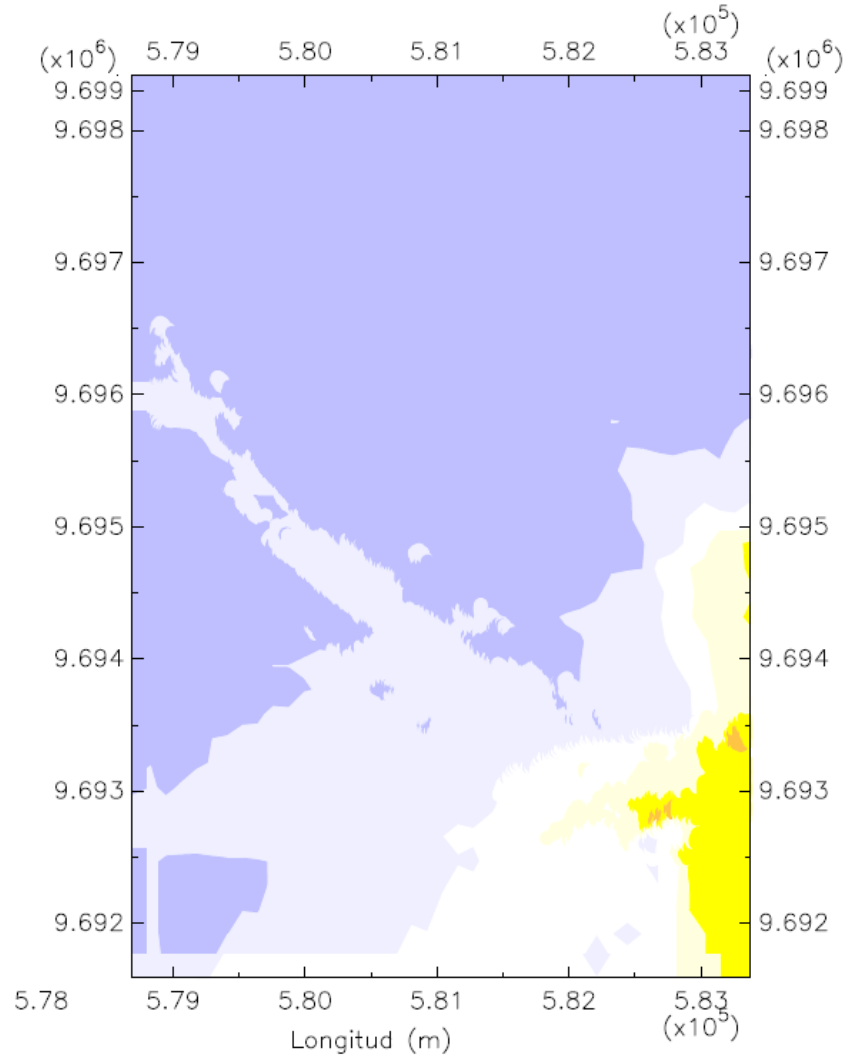
**Eslora: 289 m**

**Manga: 32.20 m**

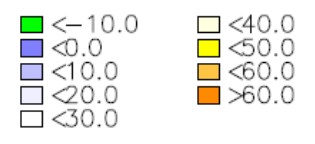
**Calado: 11.60 m**

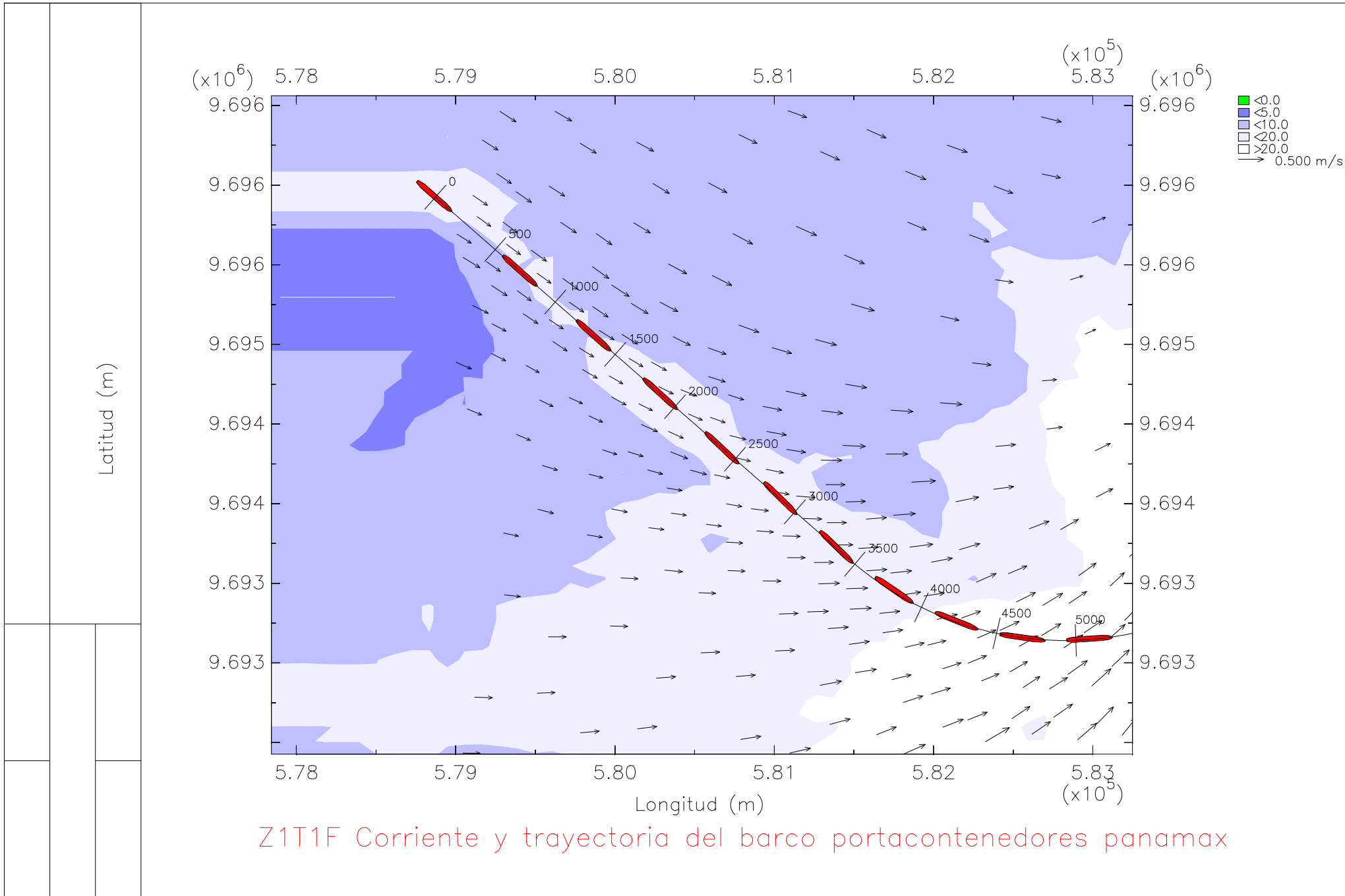
**En la zona 1, tramo 1**

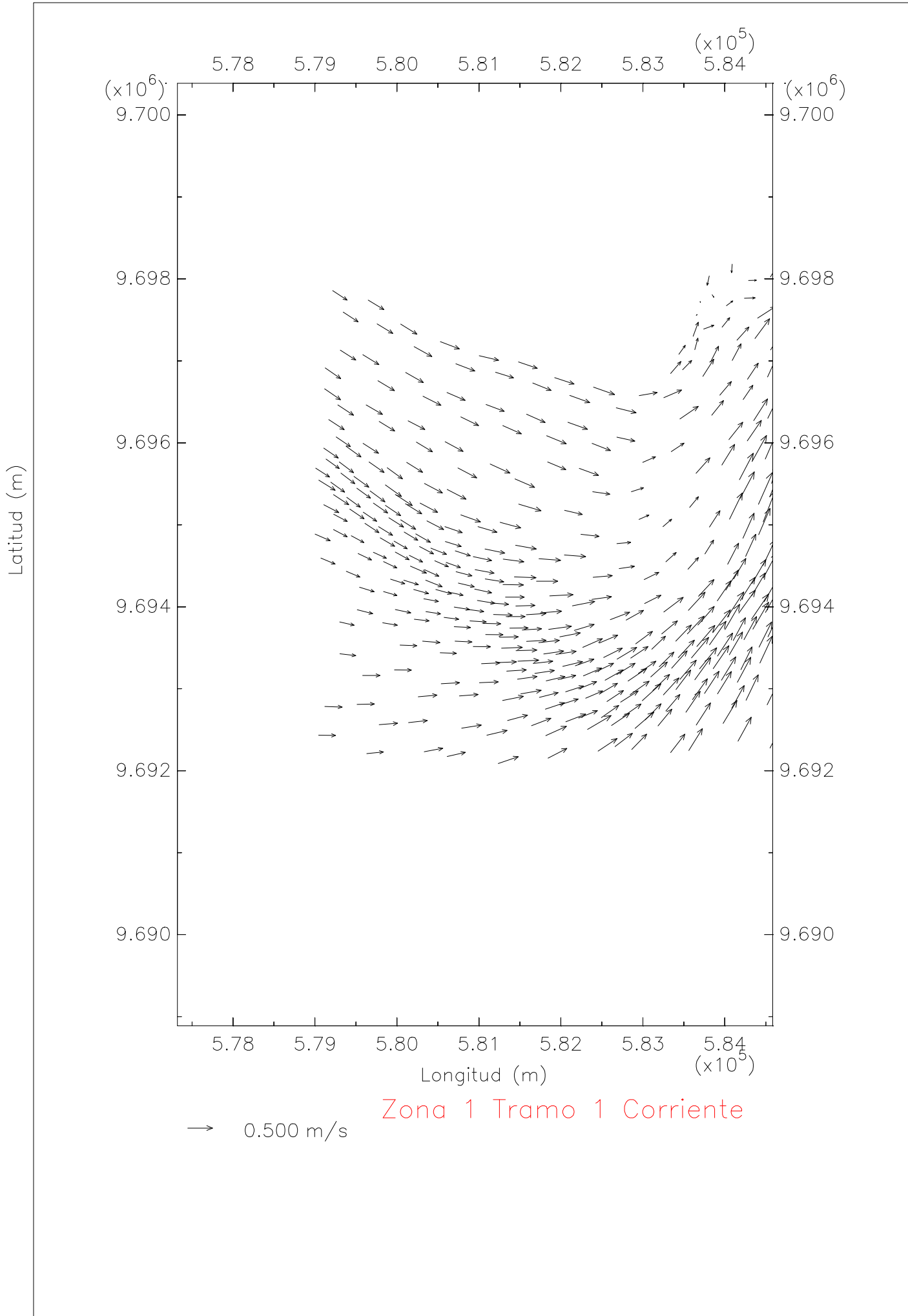
**Bajo condiciones de y llenante**

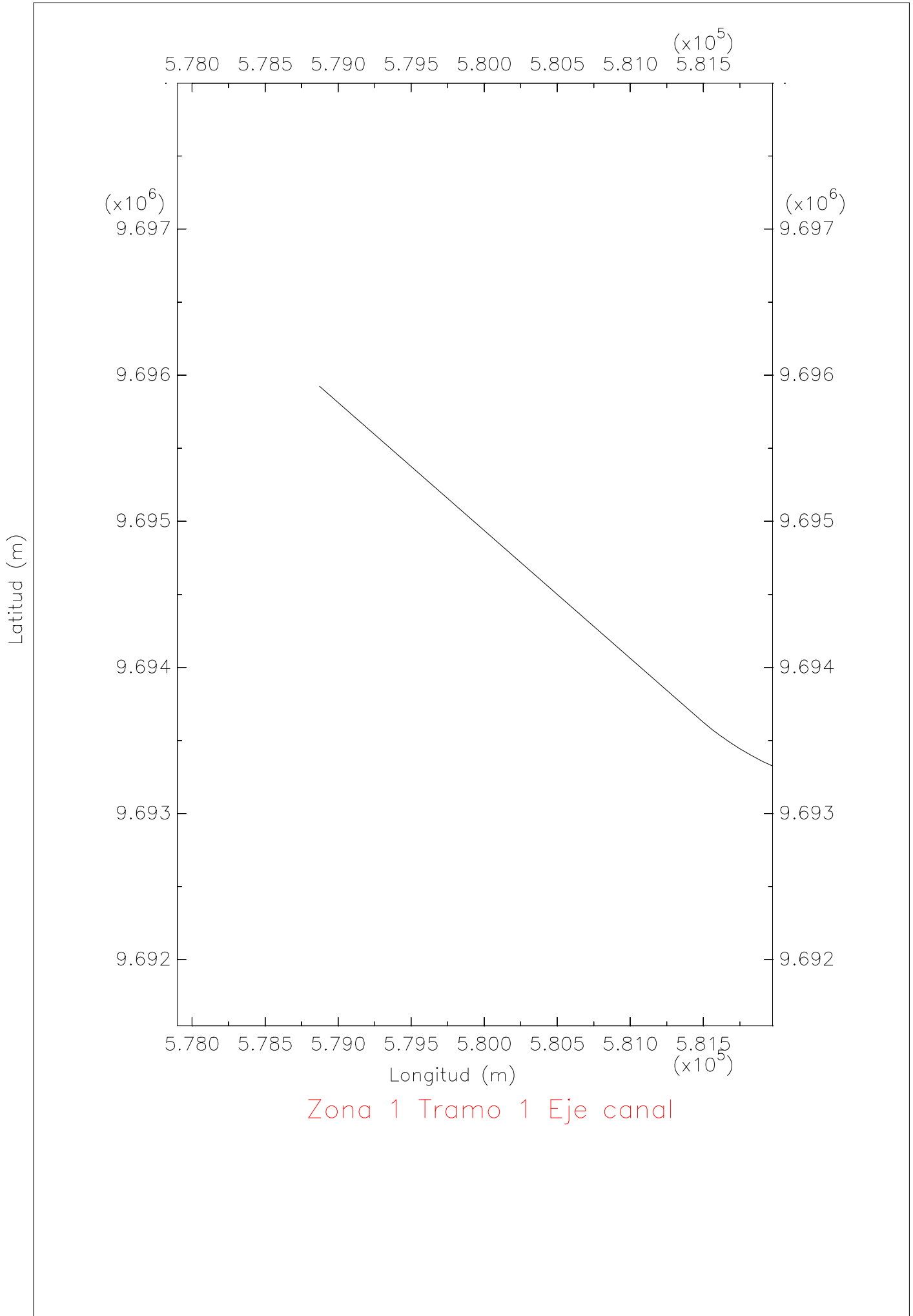


Zona 1 Tramo 1 Profundidad

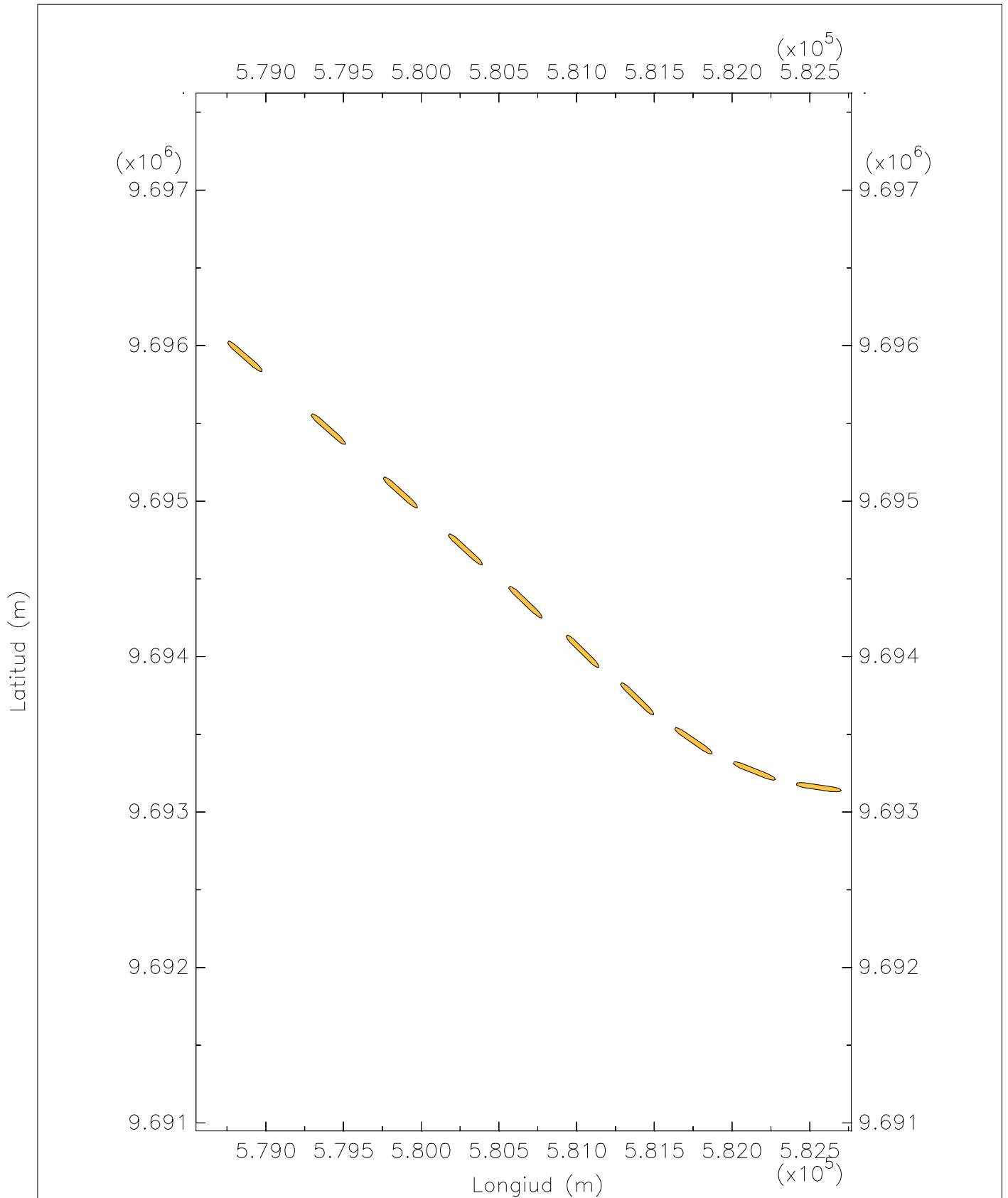






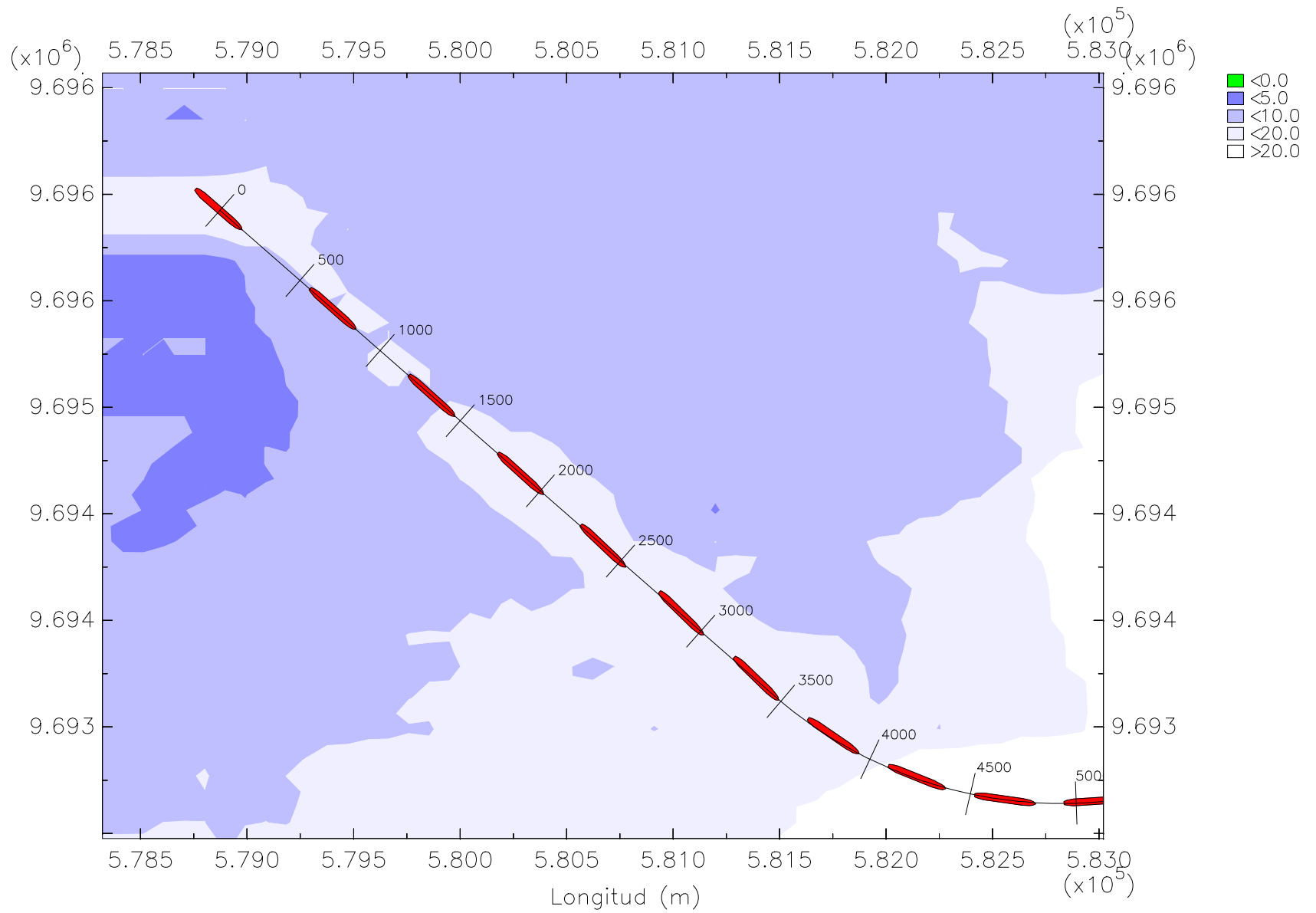


Zona 1 Tramo 1 Eje canal



Z1T1 Trayectoria del barco portacontenedores panamax

Latitud (m)



Z1T1 Trayectoria del barco portacontenedores panamax con profundidad