

**Barco portacontenedores**

**Tipo post-panamax**

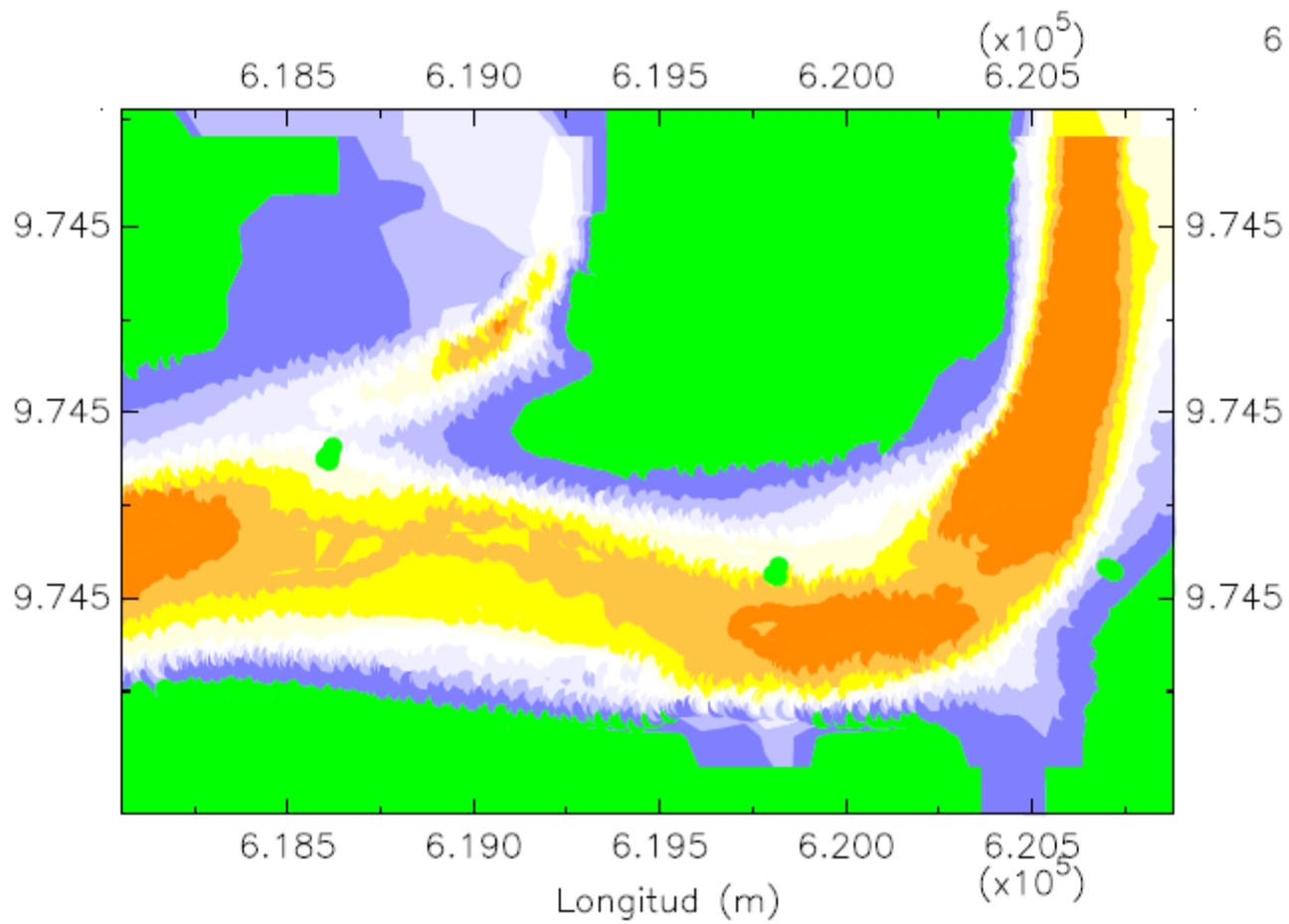
**Eslora: 318.20 m**

**Manga: 42.800 m**

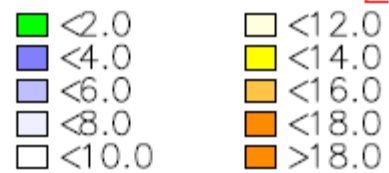
**Calado: 11.60 m**

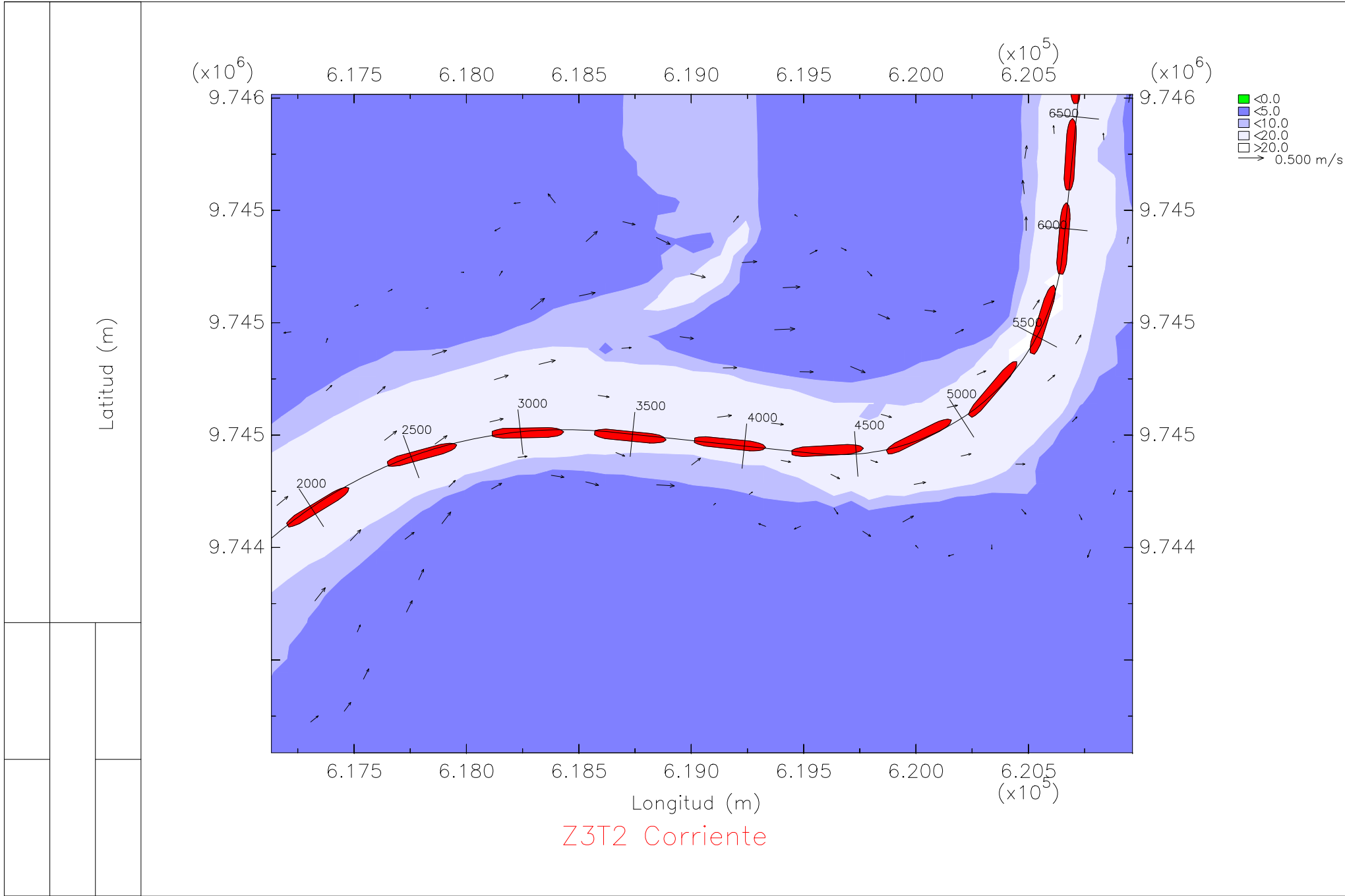
**En la zona 3, tramo 2**

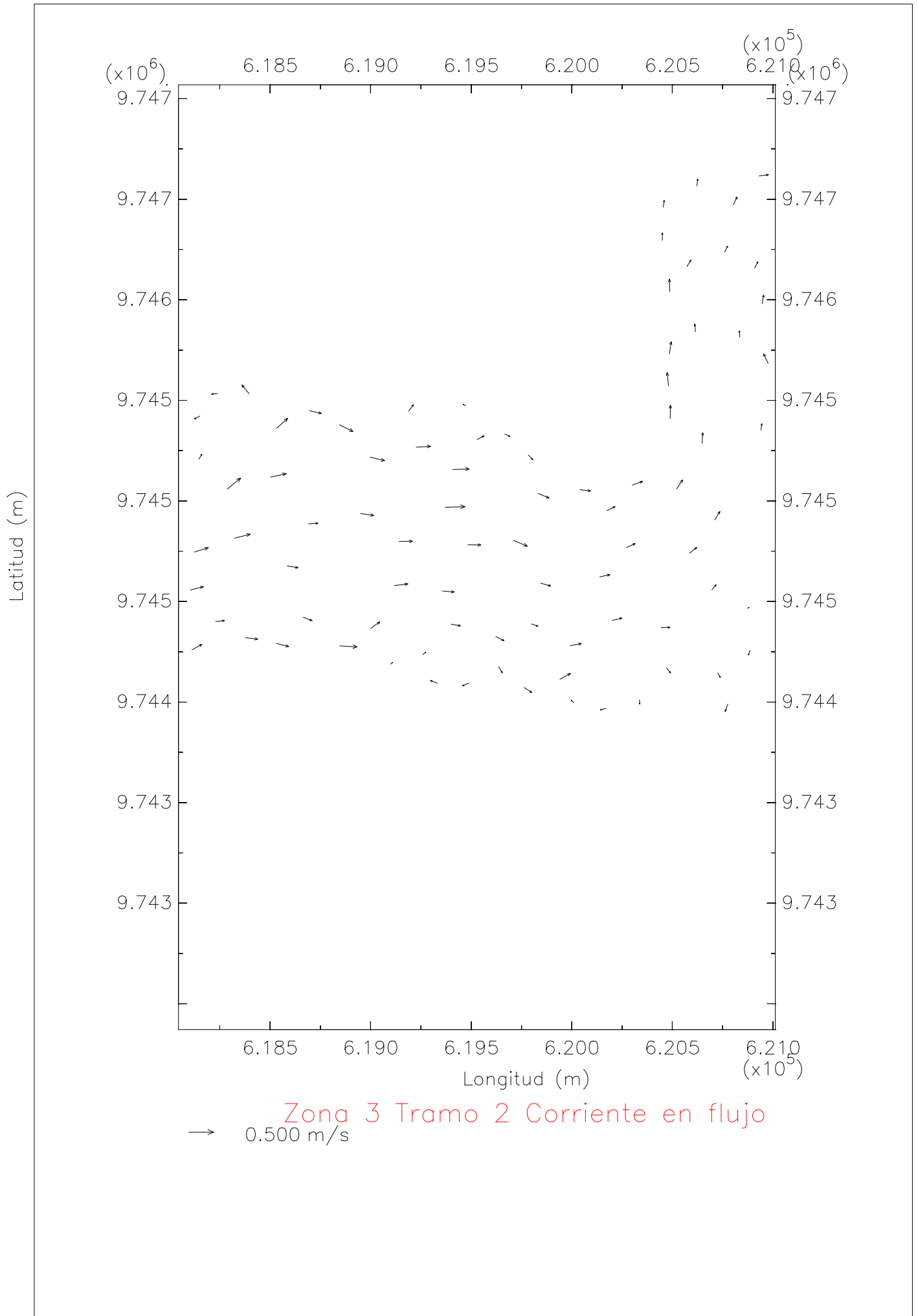
**Bajo condiciones de oleaje y llenante**

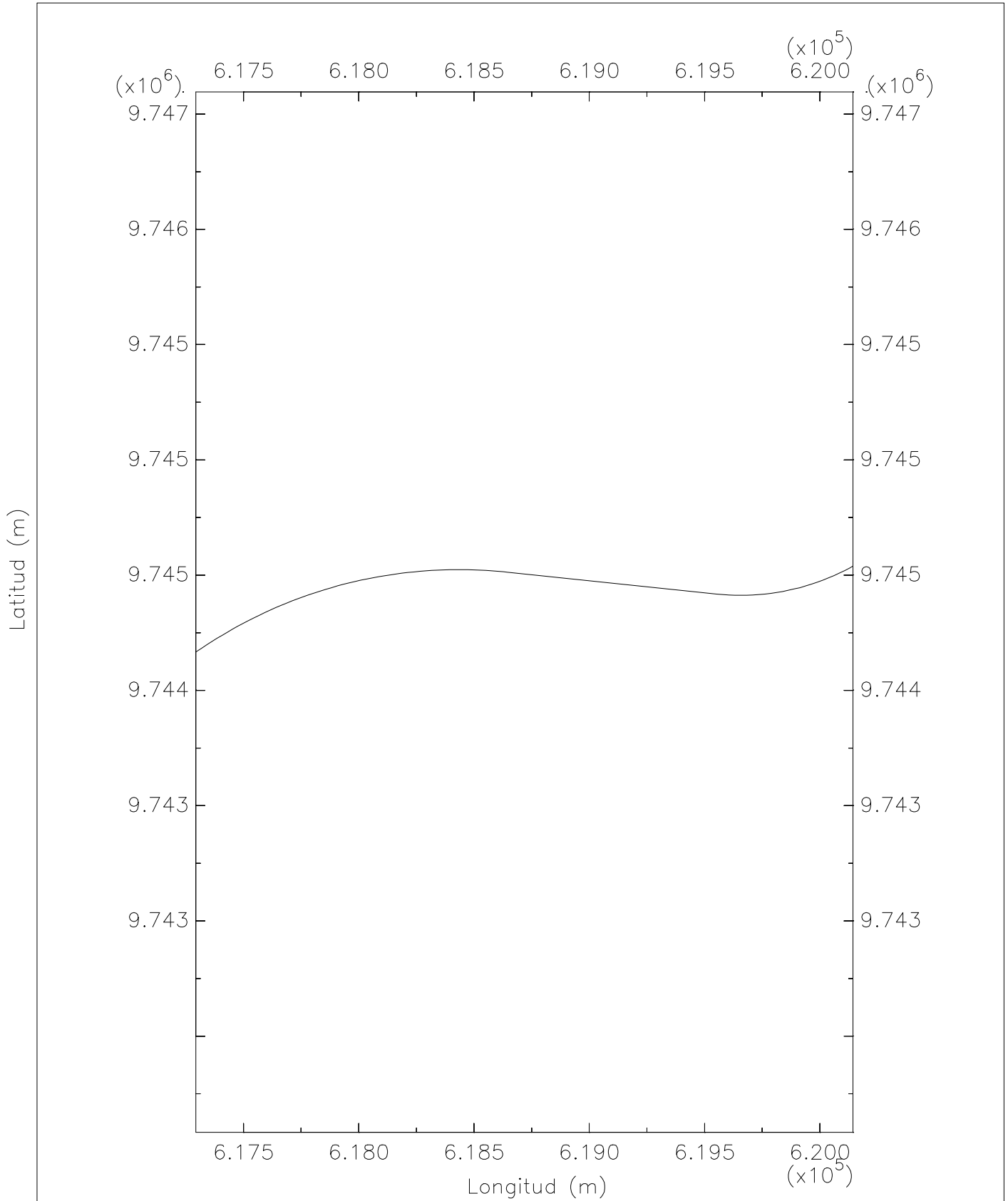


### Zona 3 Tramo 2 Profundidad

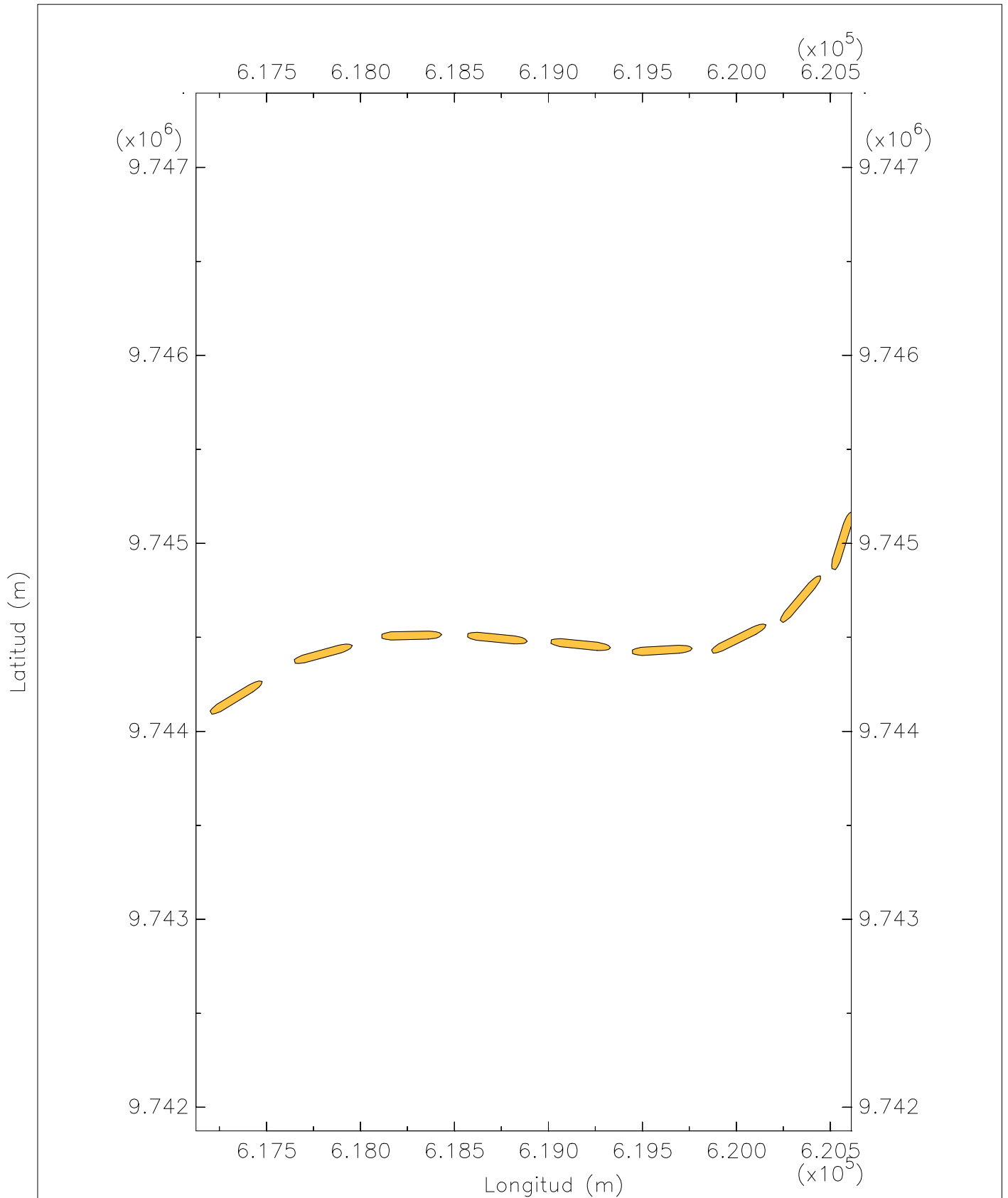






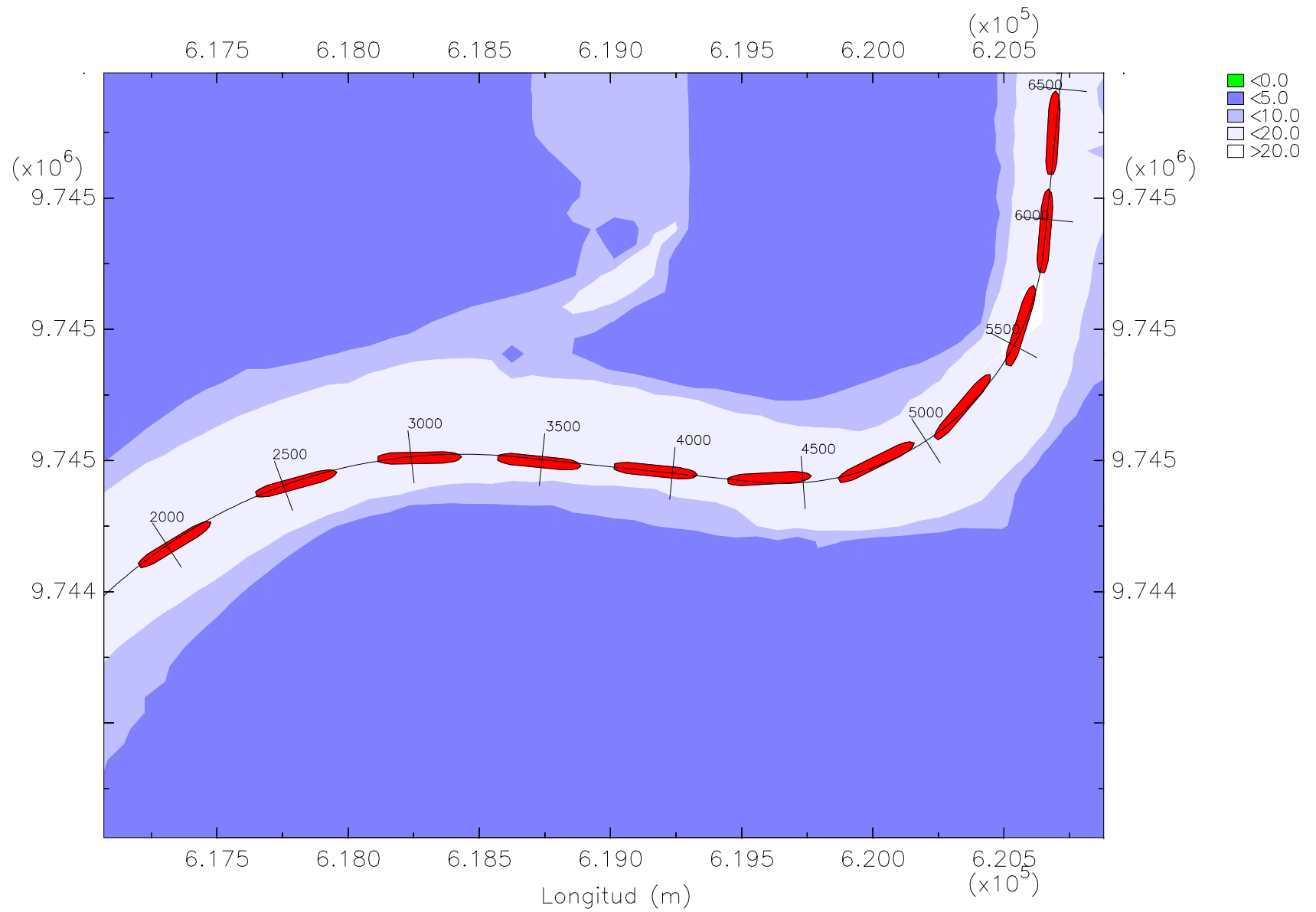


Zona 3 Tramo 2 Eje del canal



Z3T2 Trayectoria del barco portacontenedores post-panamax en flujo

Latitud (m)



Z3T2 Trayectoria del barco portacontenedores post-panamax en flujo

