

Barco portacontenedores

Tipo panamax

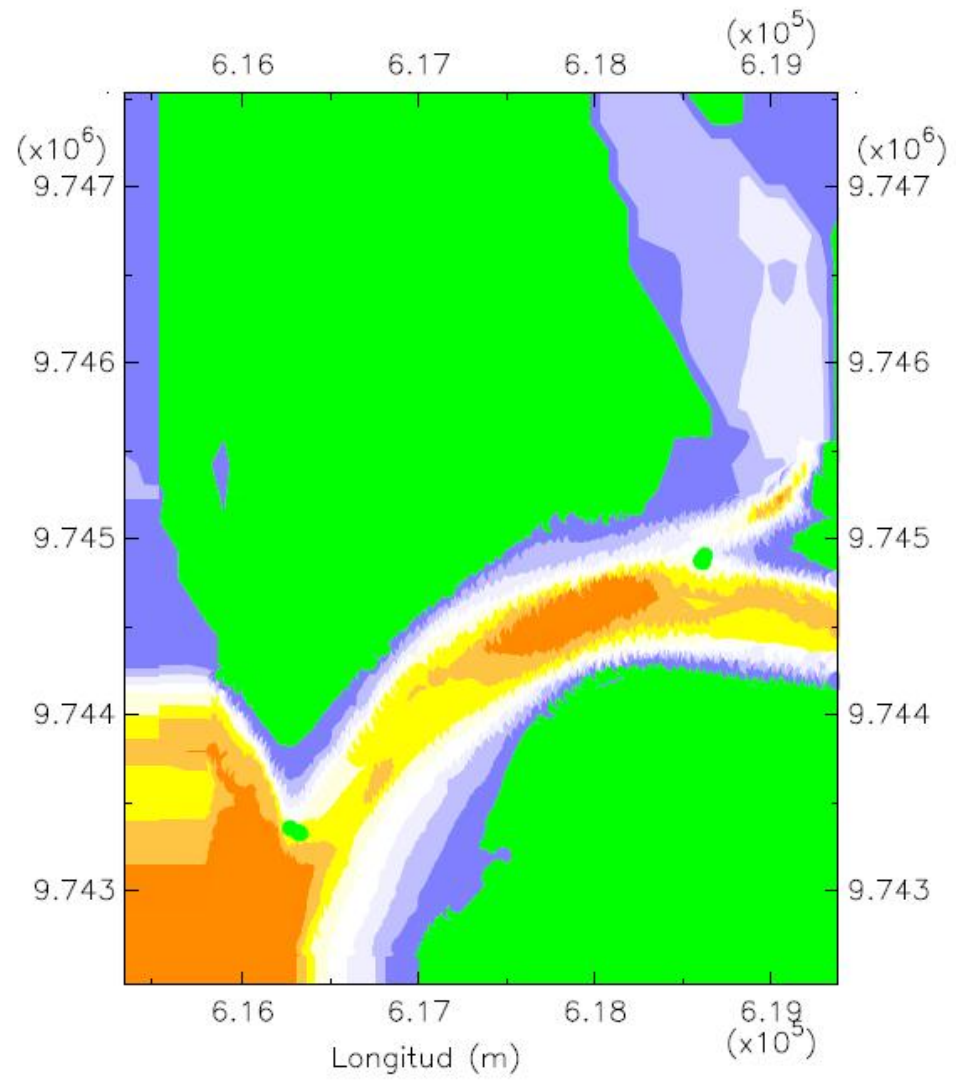
Eslora: 289 m

Manga: 32.20 m

Calado: 11.60 m

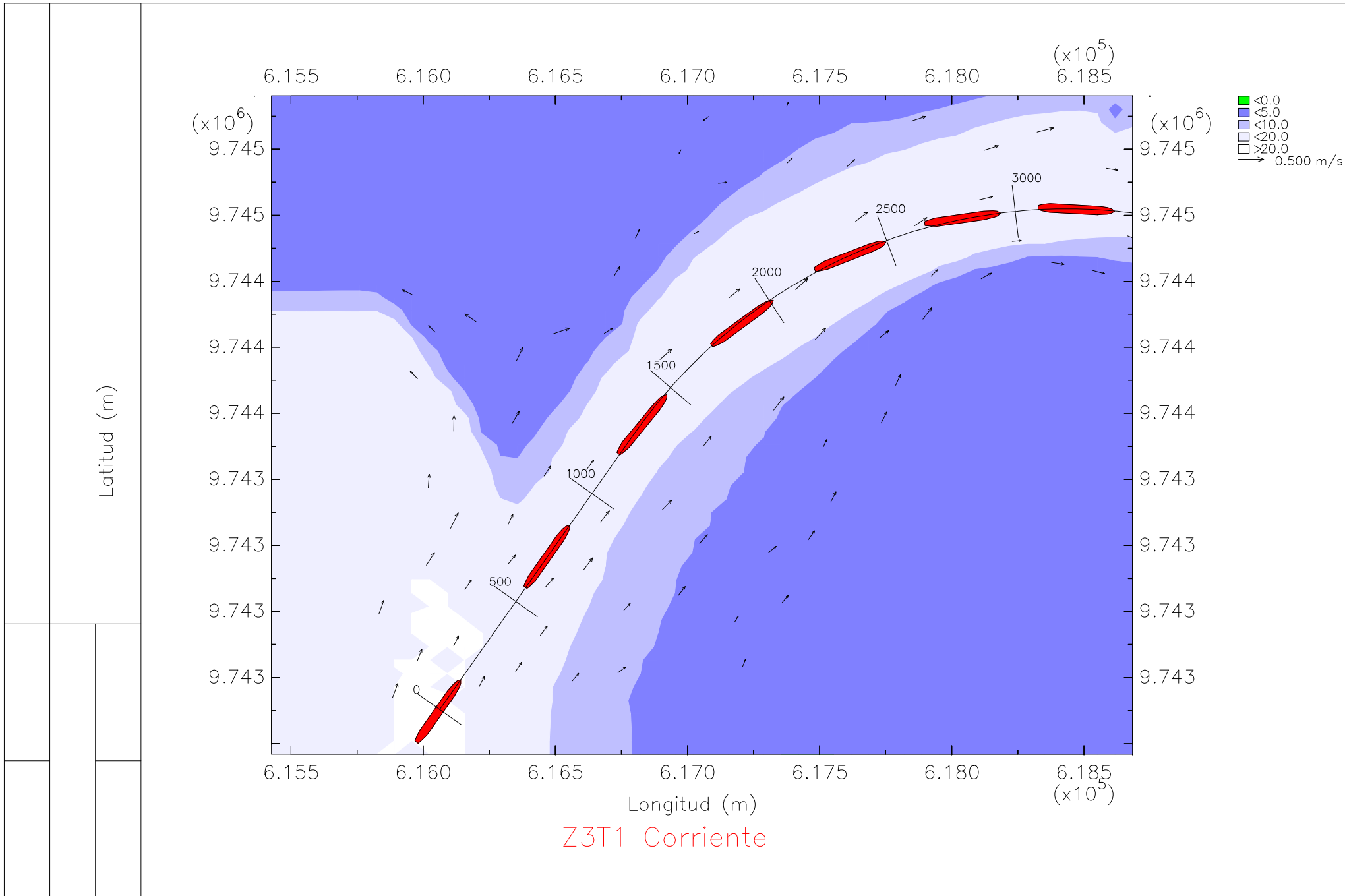
En la zona 3, tramo 1

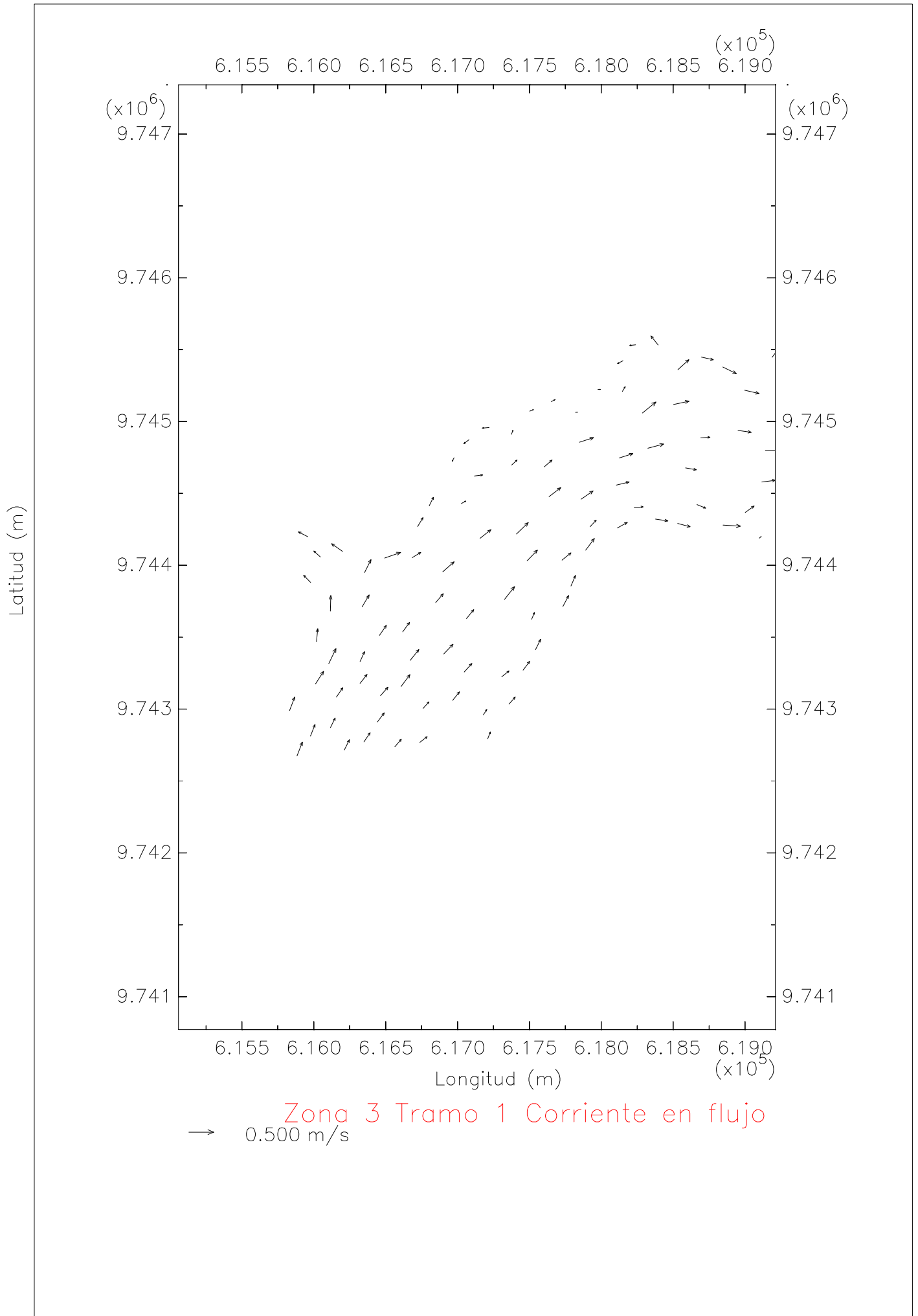
Bajo condiciones de oleaje y llenante

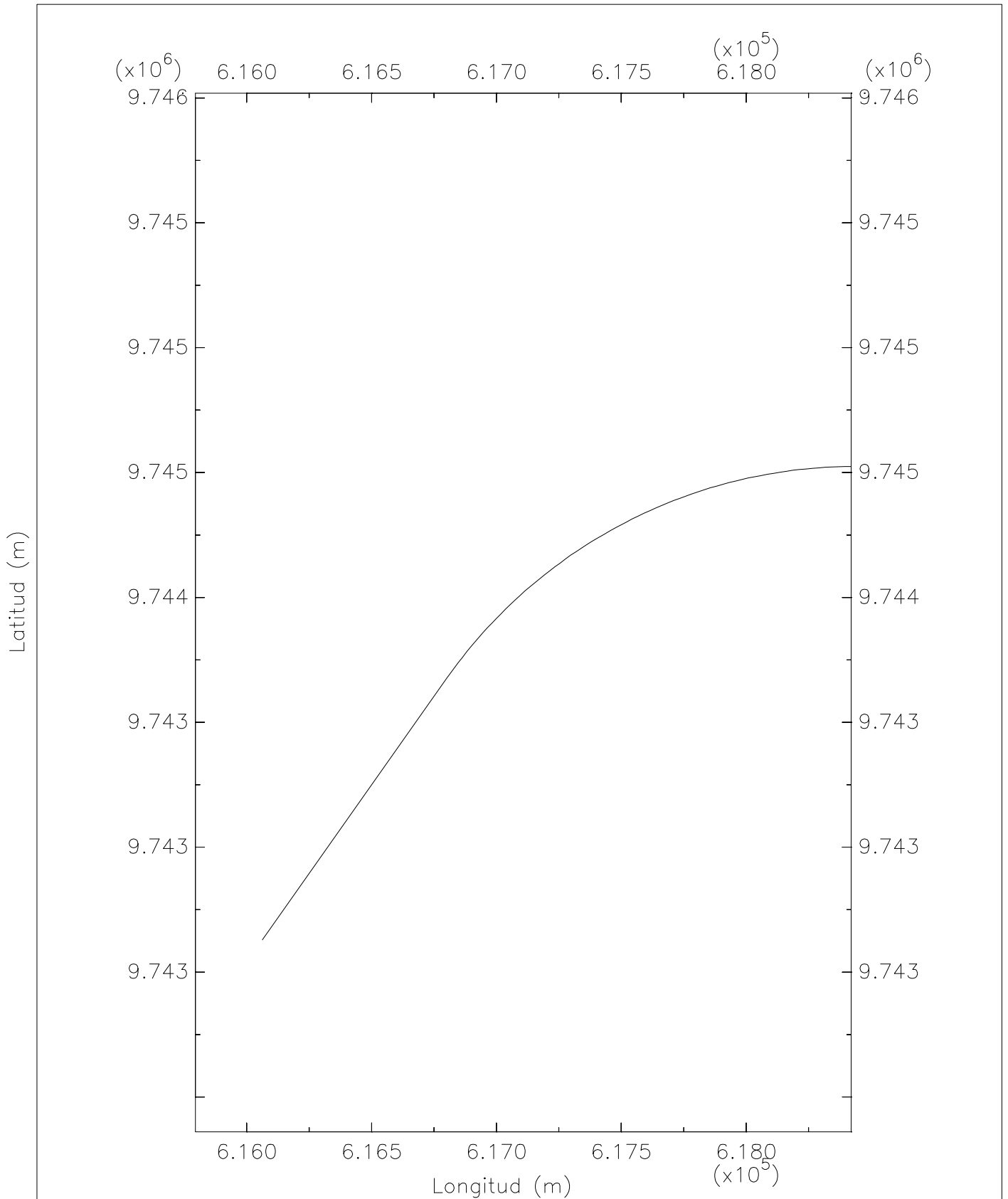


Zona 3 Tramo 1 Profundidad



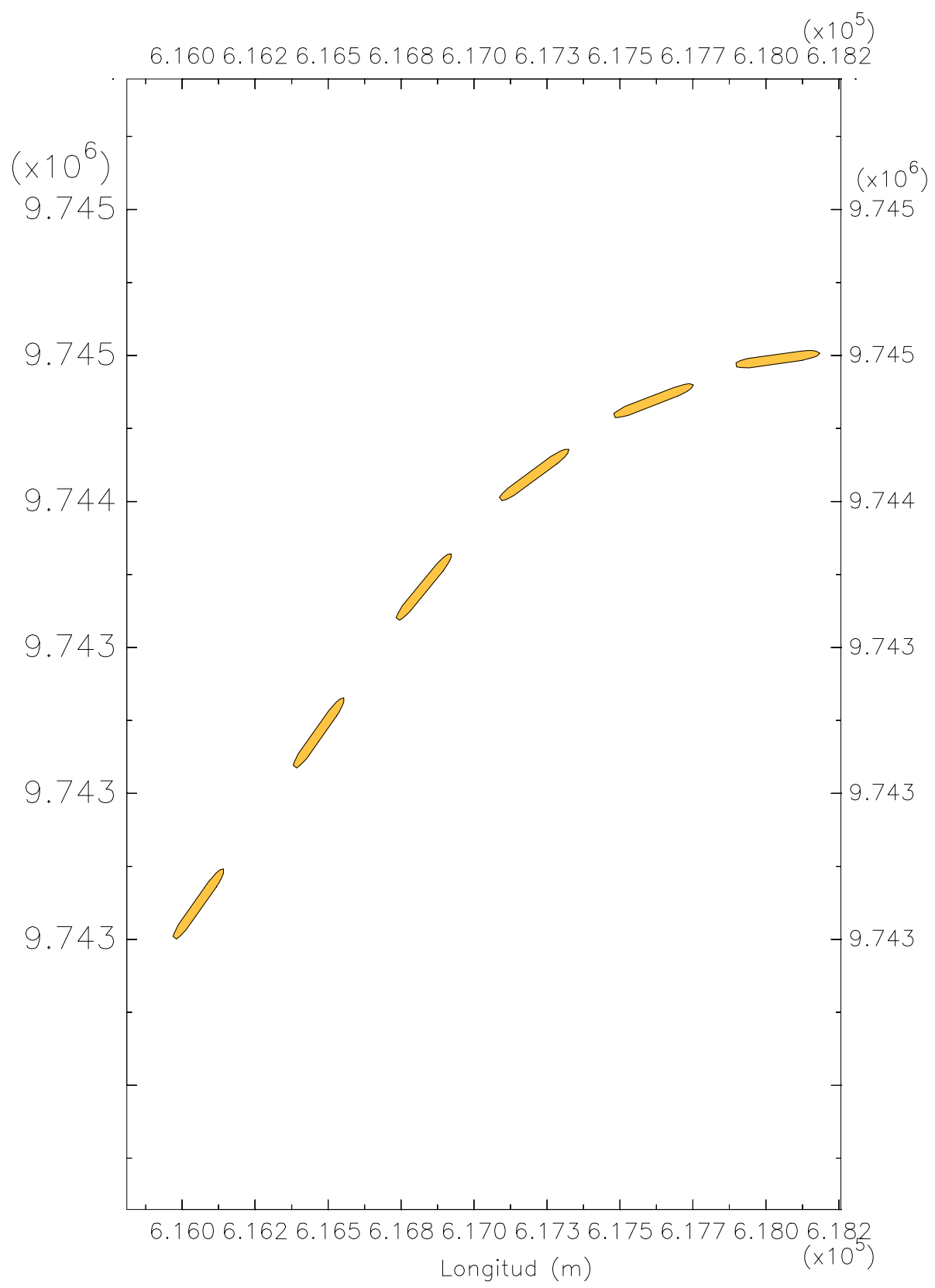






Zona 3 Tramo 1 Eje del canal

Latitud (m)



Z3T1 Trayectoria del barco portacontenedores panamax

