

**Barco portacontenedores**

**Tipo post-panamax**

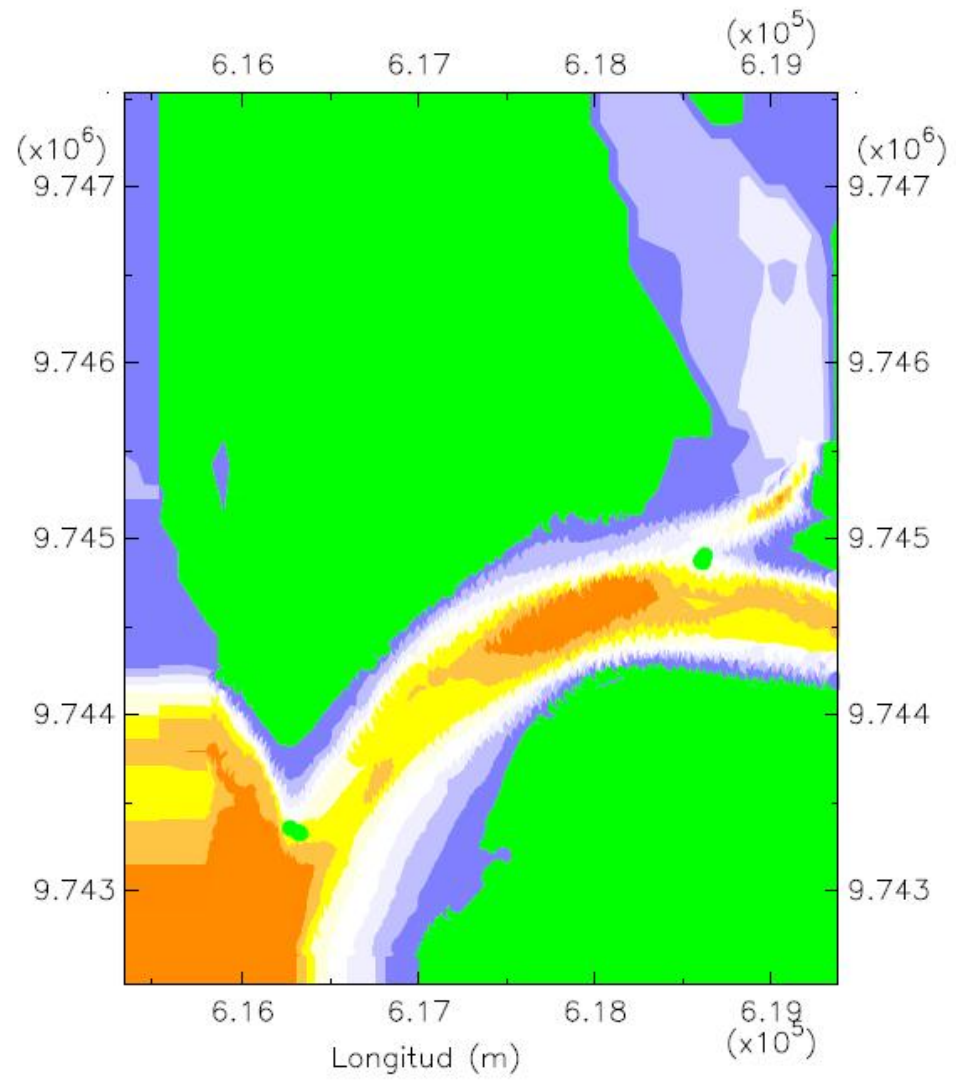
**Eslora: 318.20 m**

**Manga: 42.800 m**

**Calado: 11.60 m**

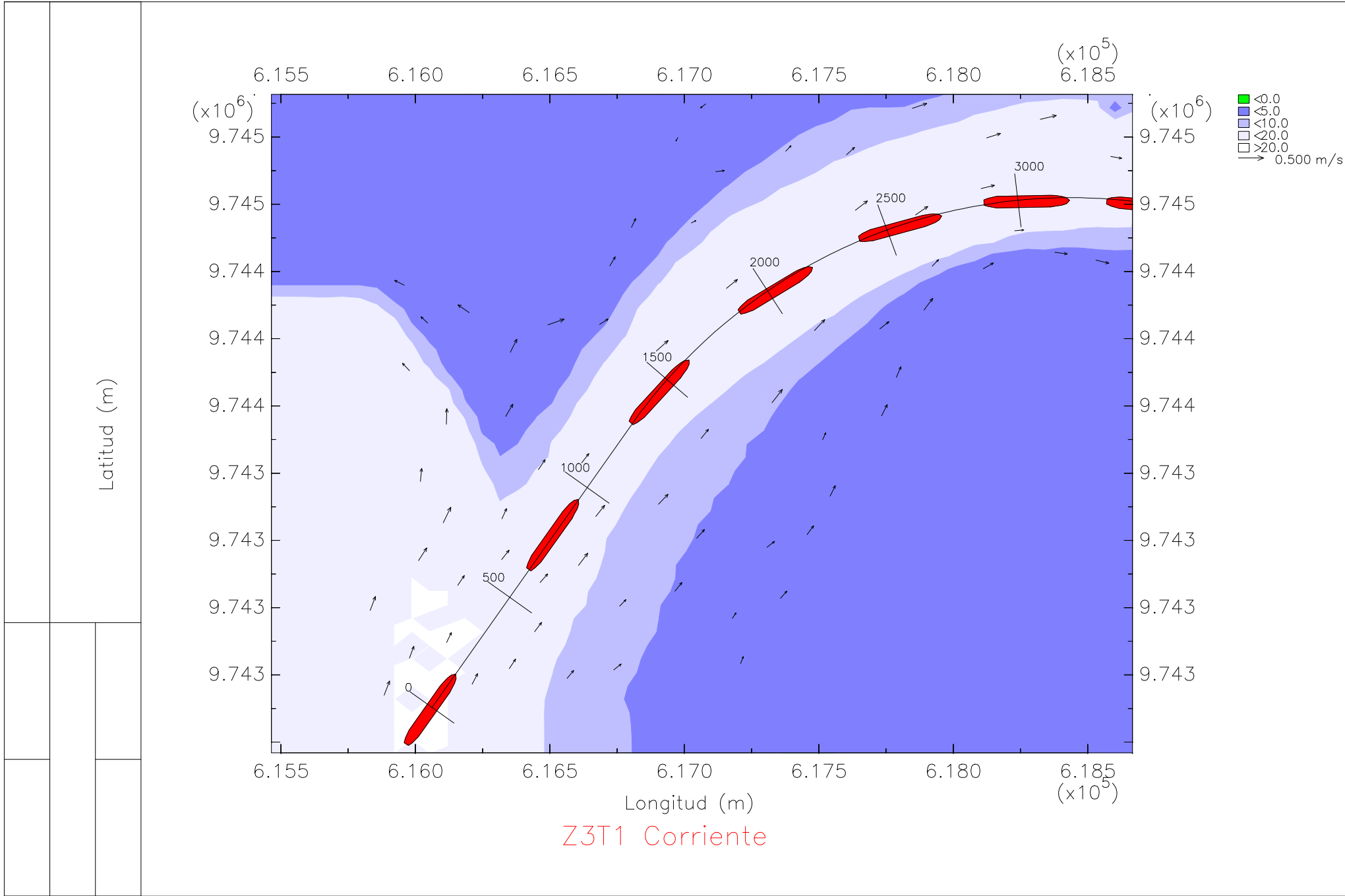
**En la zona 3, tramo 1**

**Bajo condiciones de oleaje y llenante**

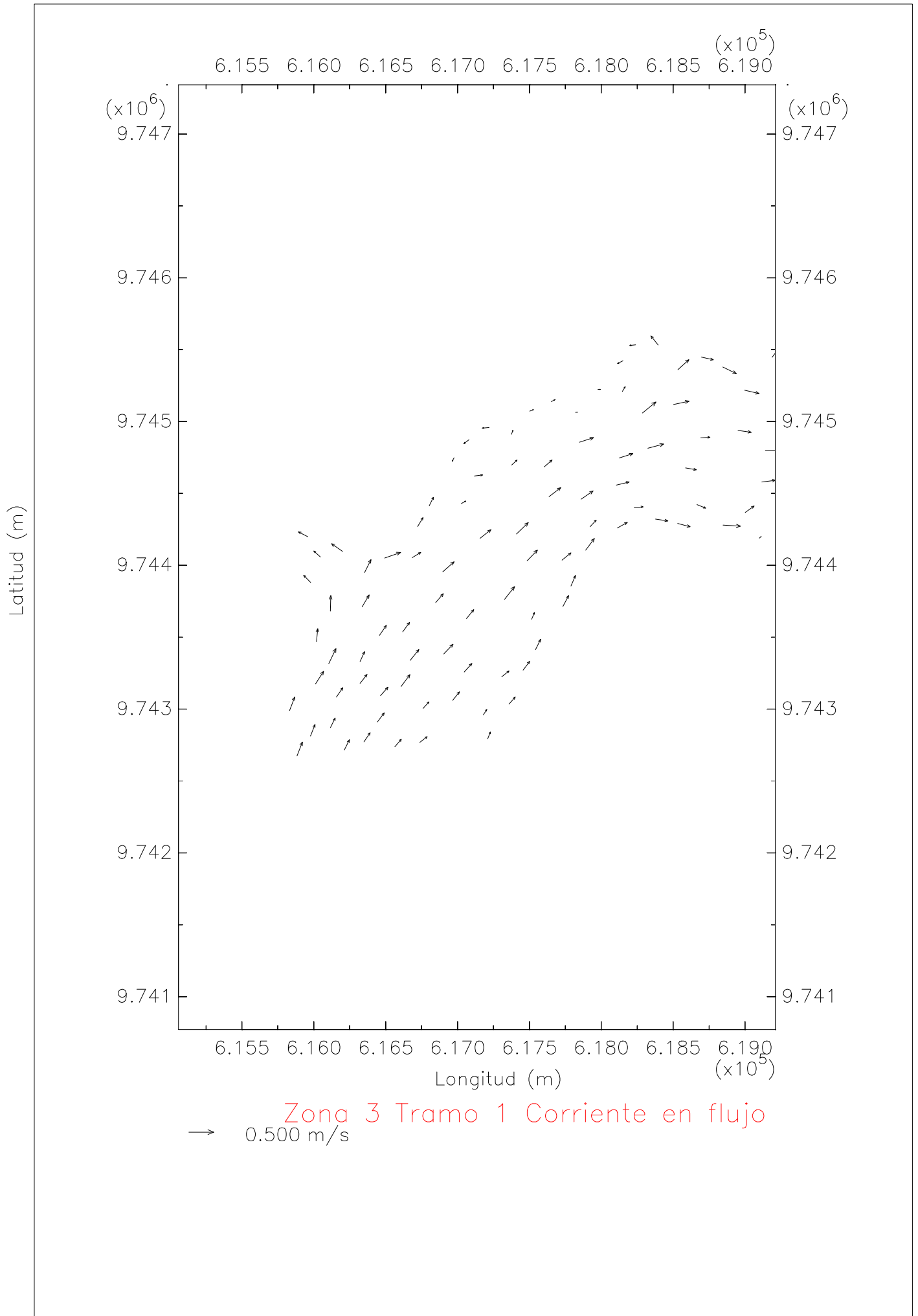


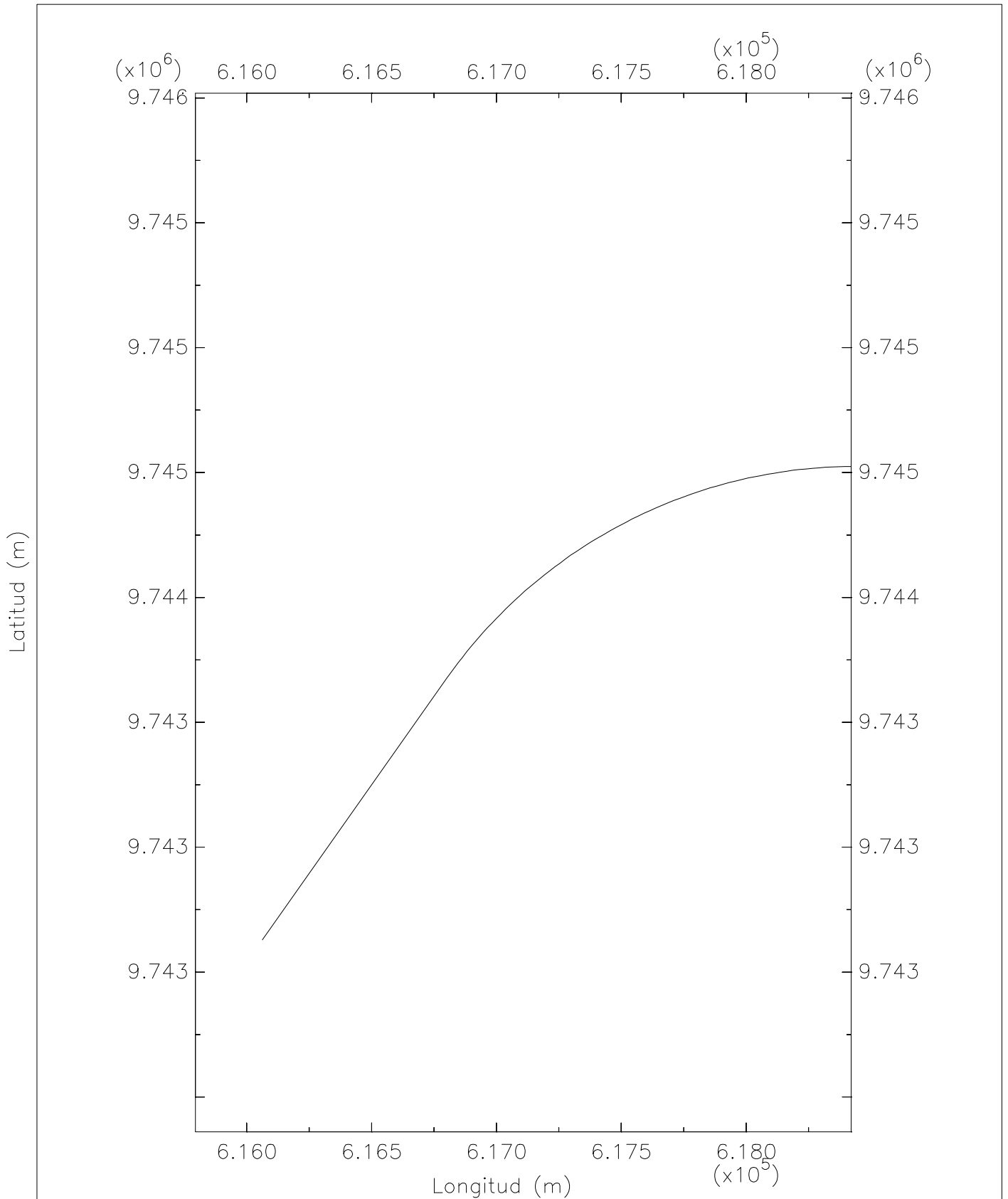
Zona 3 Tramo 1 Profundidad



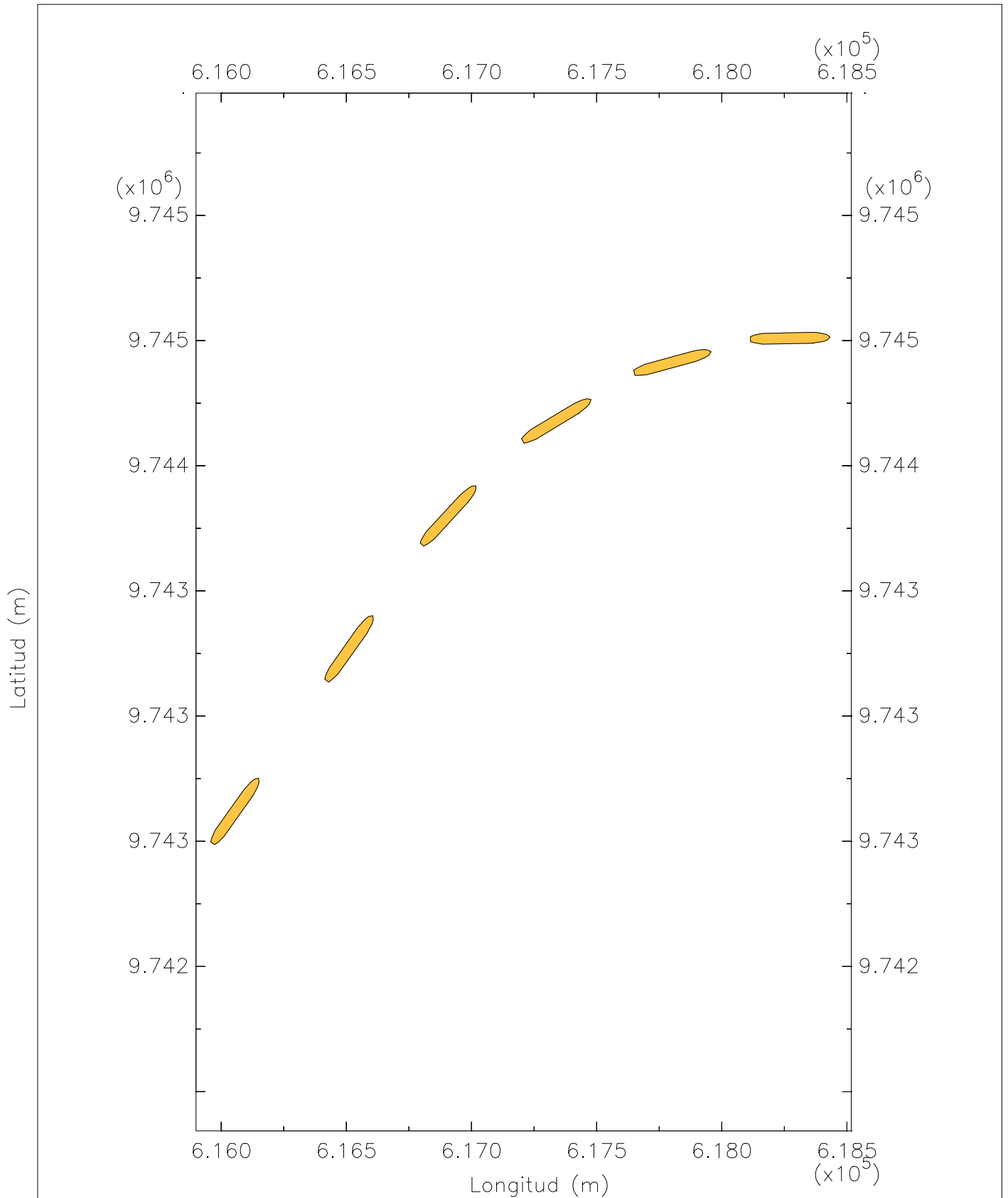


Z3T1 Corriente





Zona 3 Tramo 1 Eje del canal



Z3T1 Trayectoria del barco portacontenedores post-panamax en flujo

