

Barco portacontenedores

Tipo post-panamax

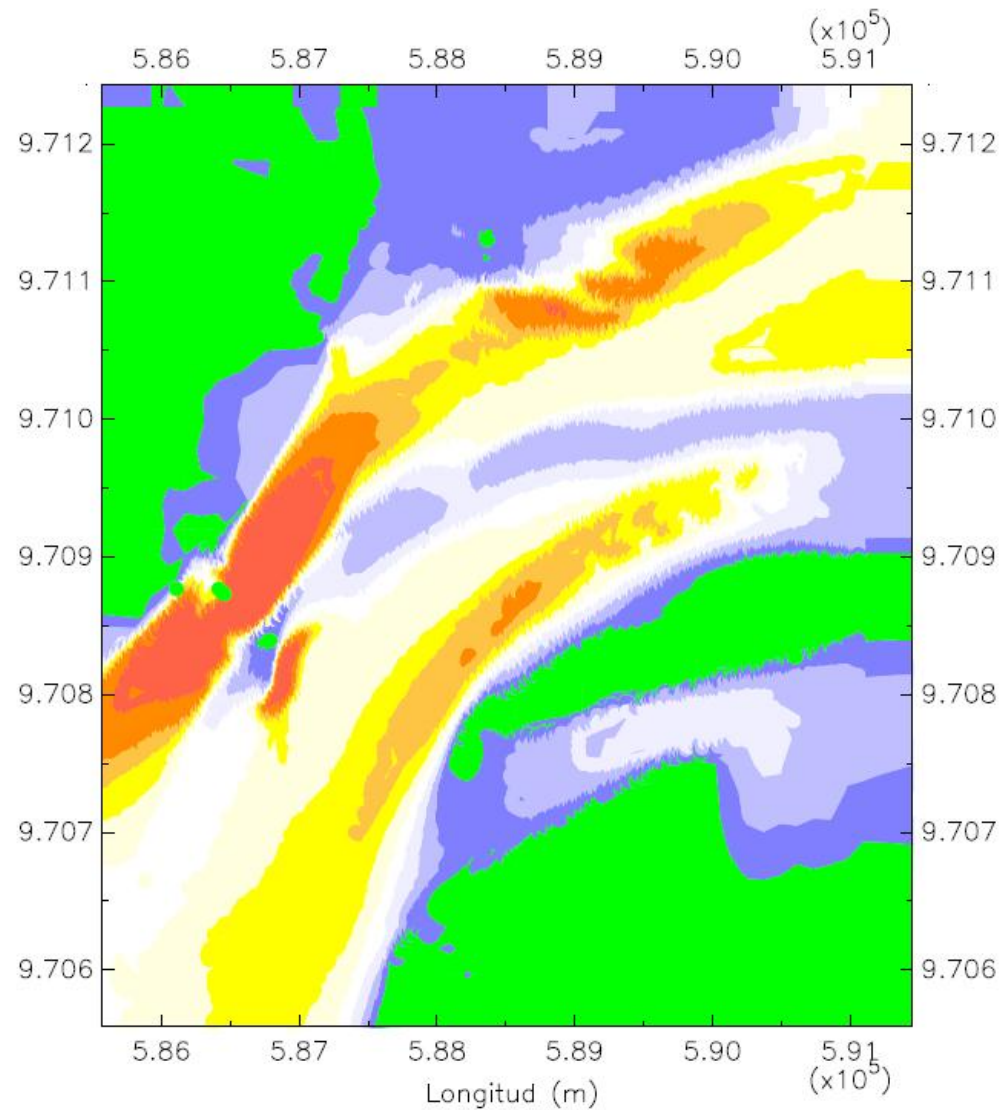
Eslora: 318.20 m

Manga: 42.800 m

Calado: 11.60 m

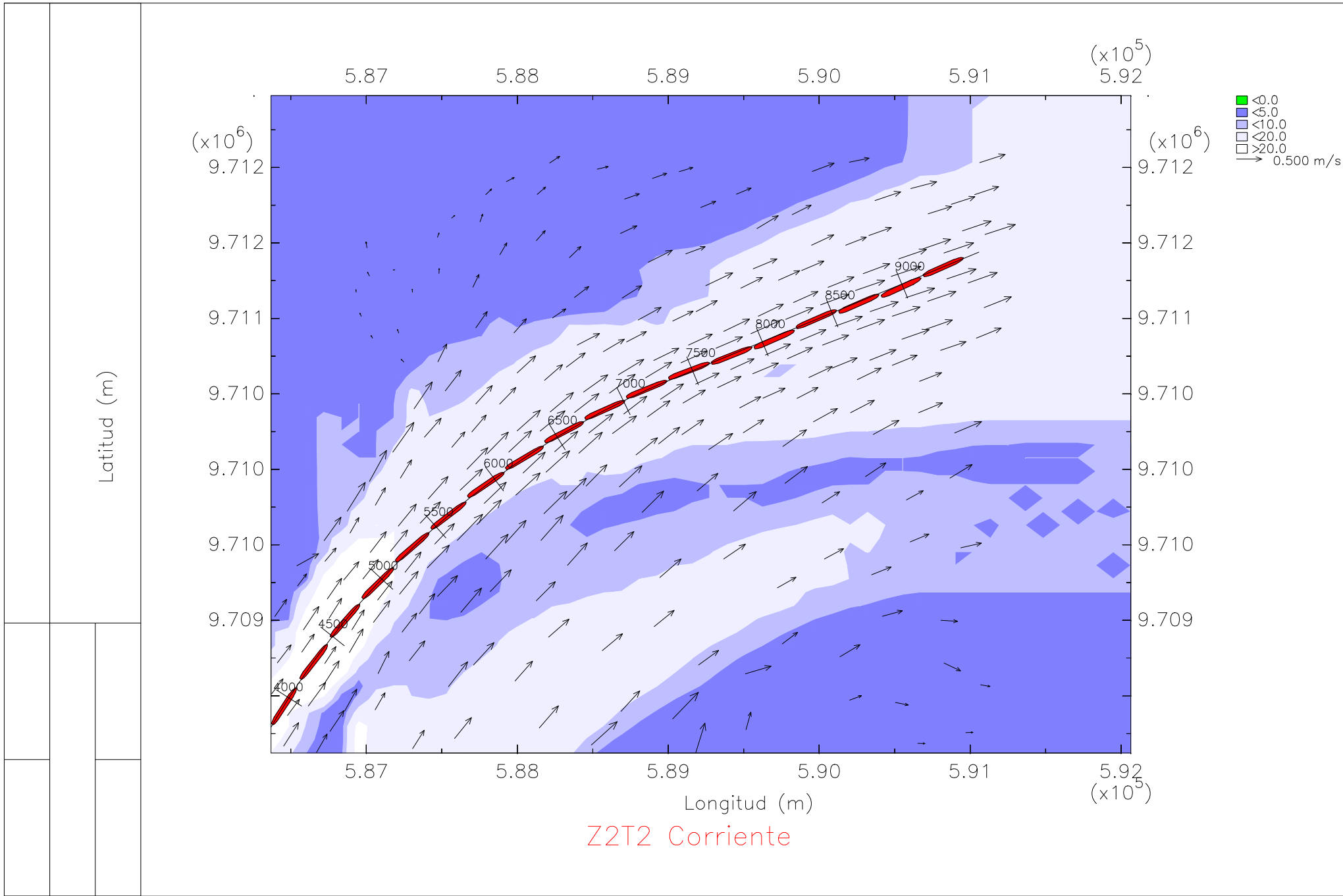
En la zona 2, tramo 2

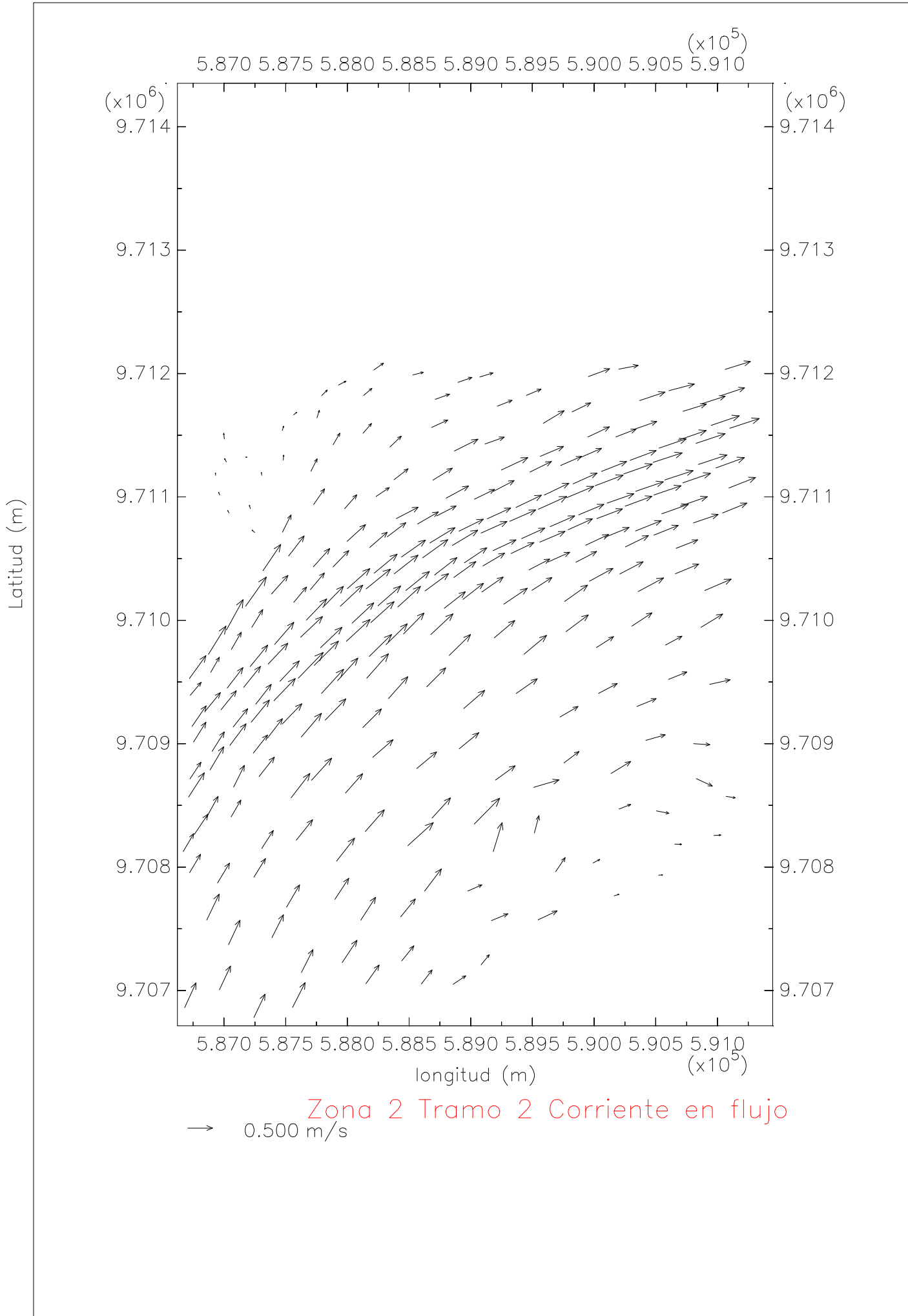
Bajo condiciones de oleaje y llenante

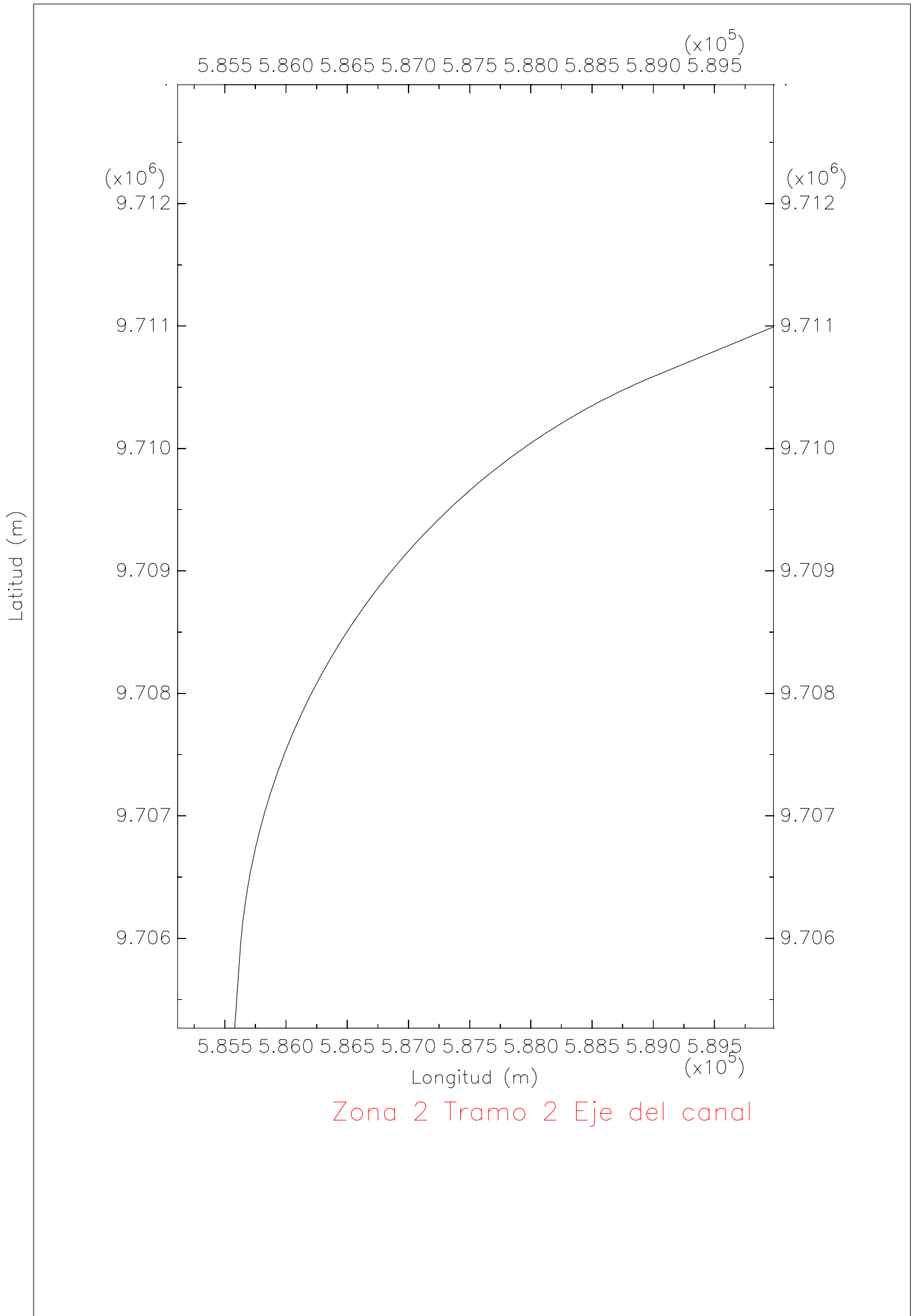


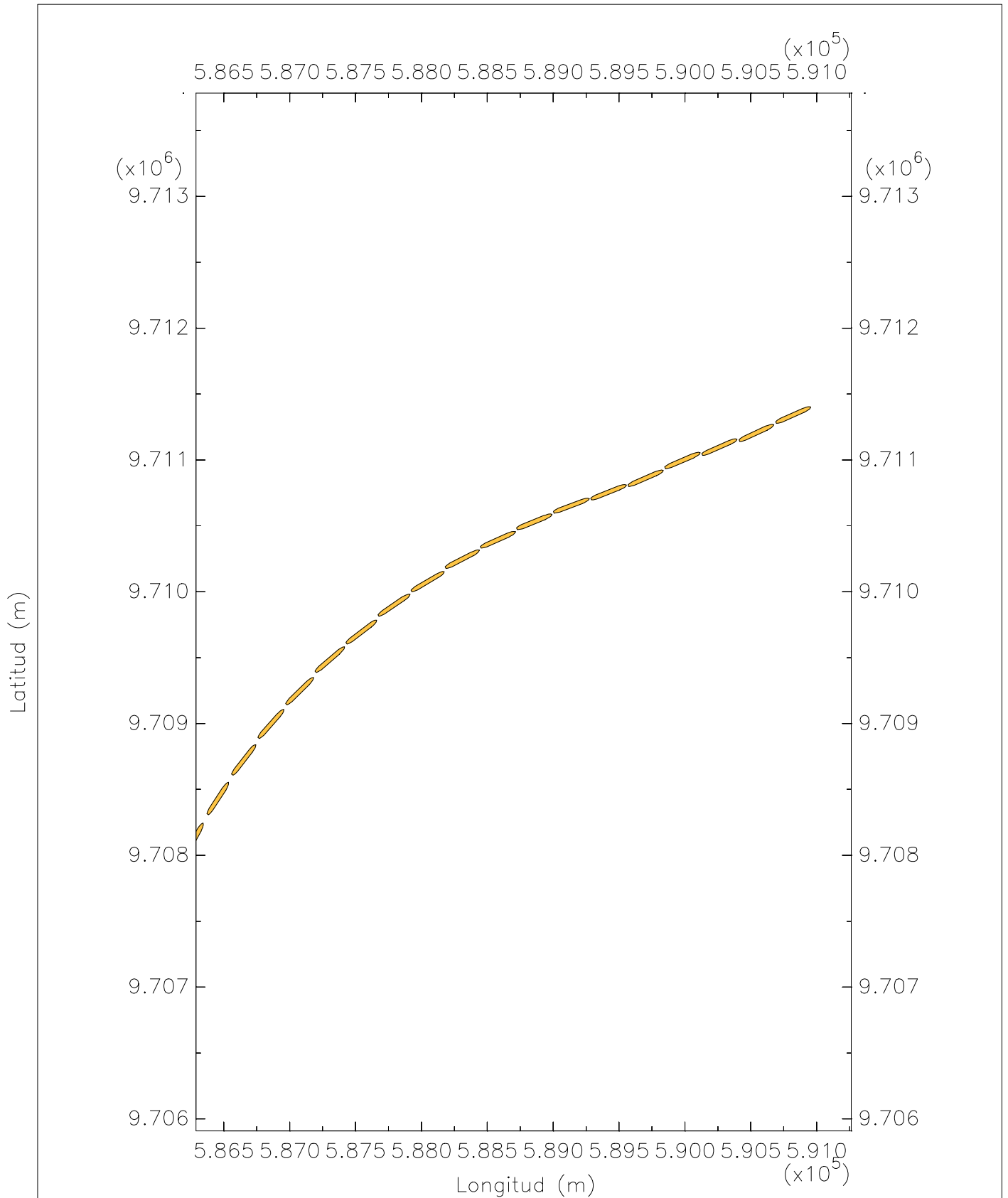
Zona 2 Tramo 2 Profundidad





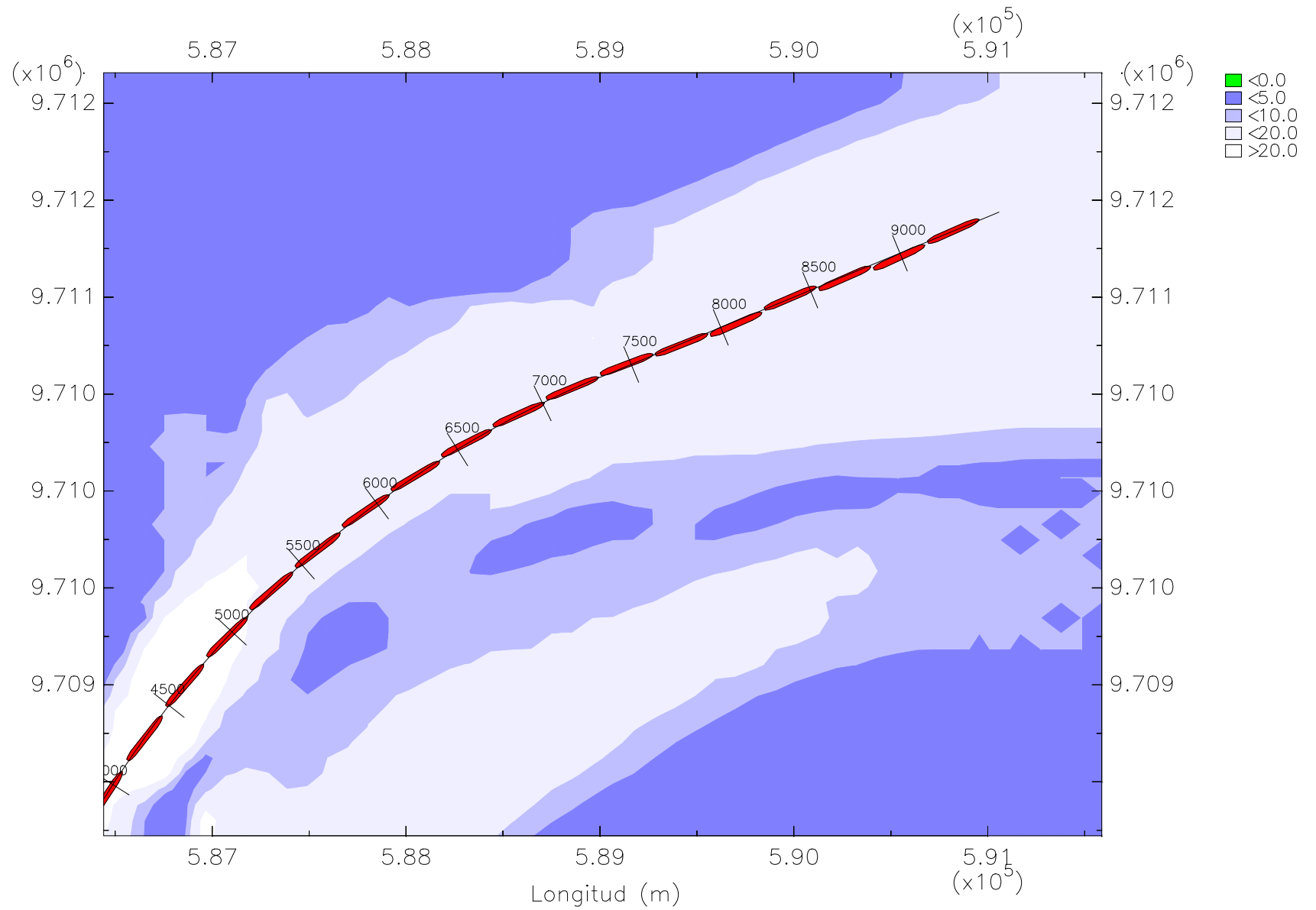




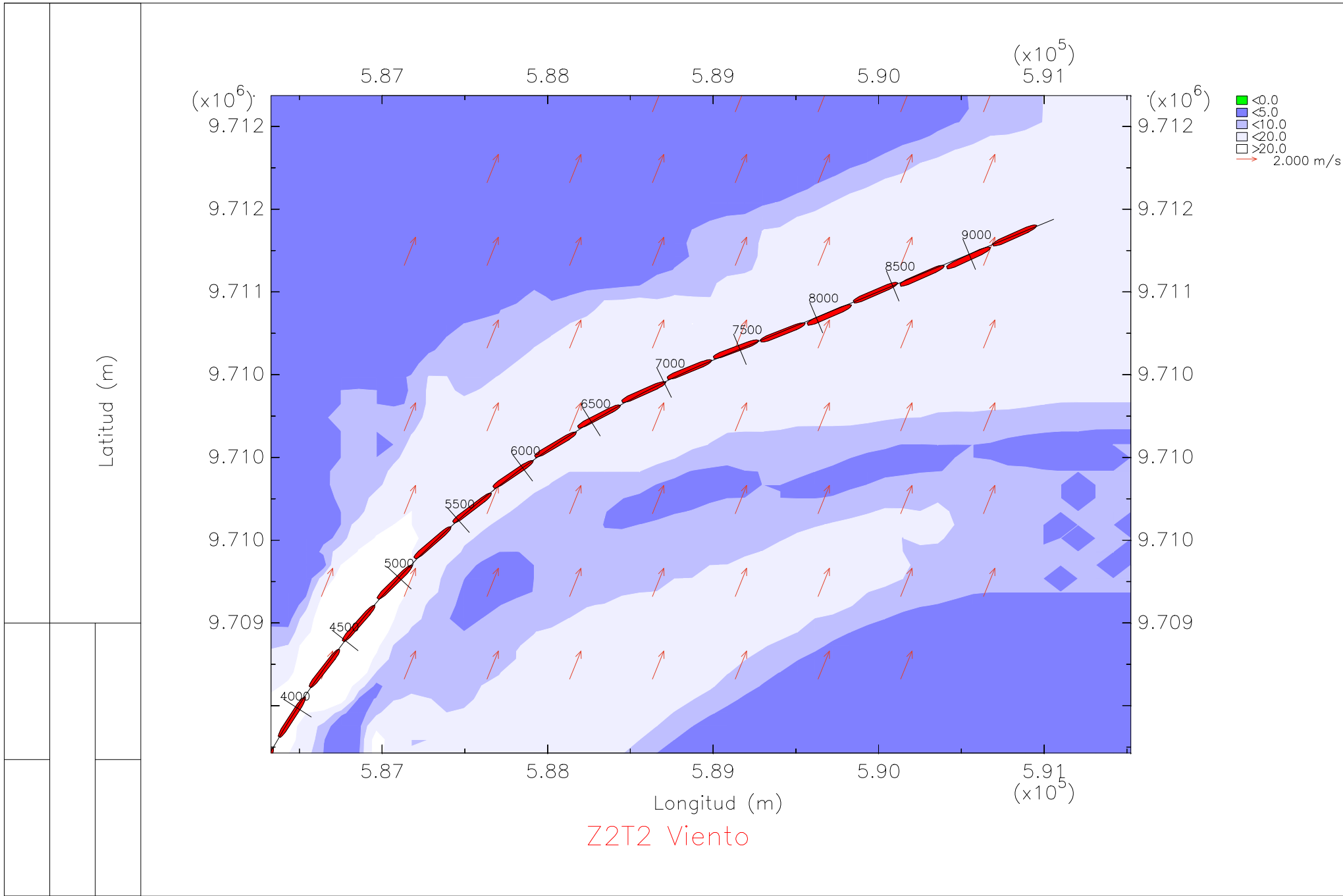


Z2T2 Trayectoria del barco portacontenedores post-panamax en flujo

Latitud (m)



Z2T2 Trayectoria del barco portacontenedores post-panamax en flujo



Z2T2 Viento