

Barco tipo granelero

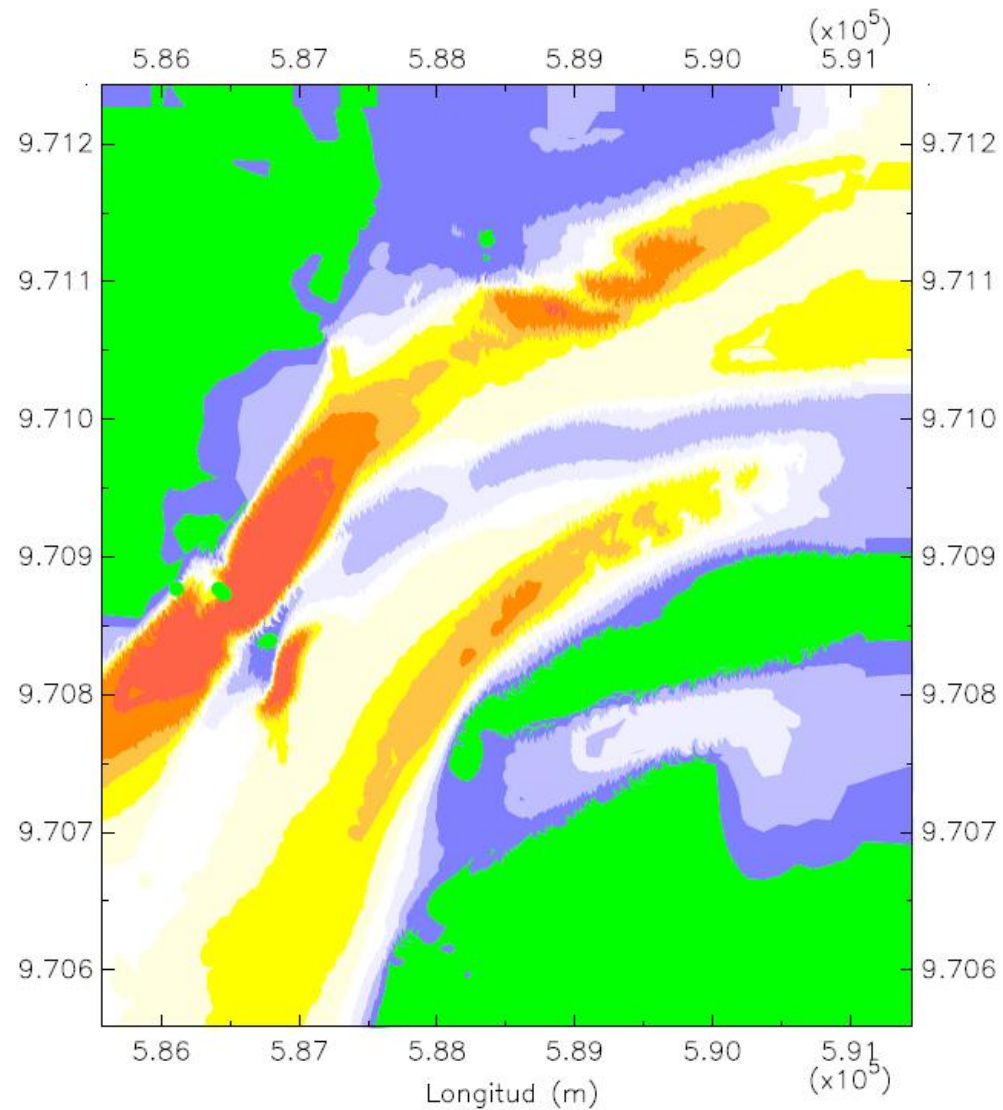
Eslora: 225 m

Manga: 32.20 m

Calado: 12 m

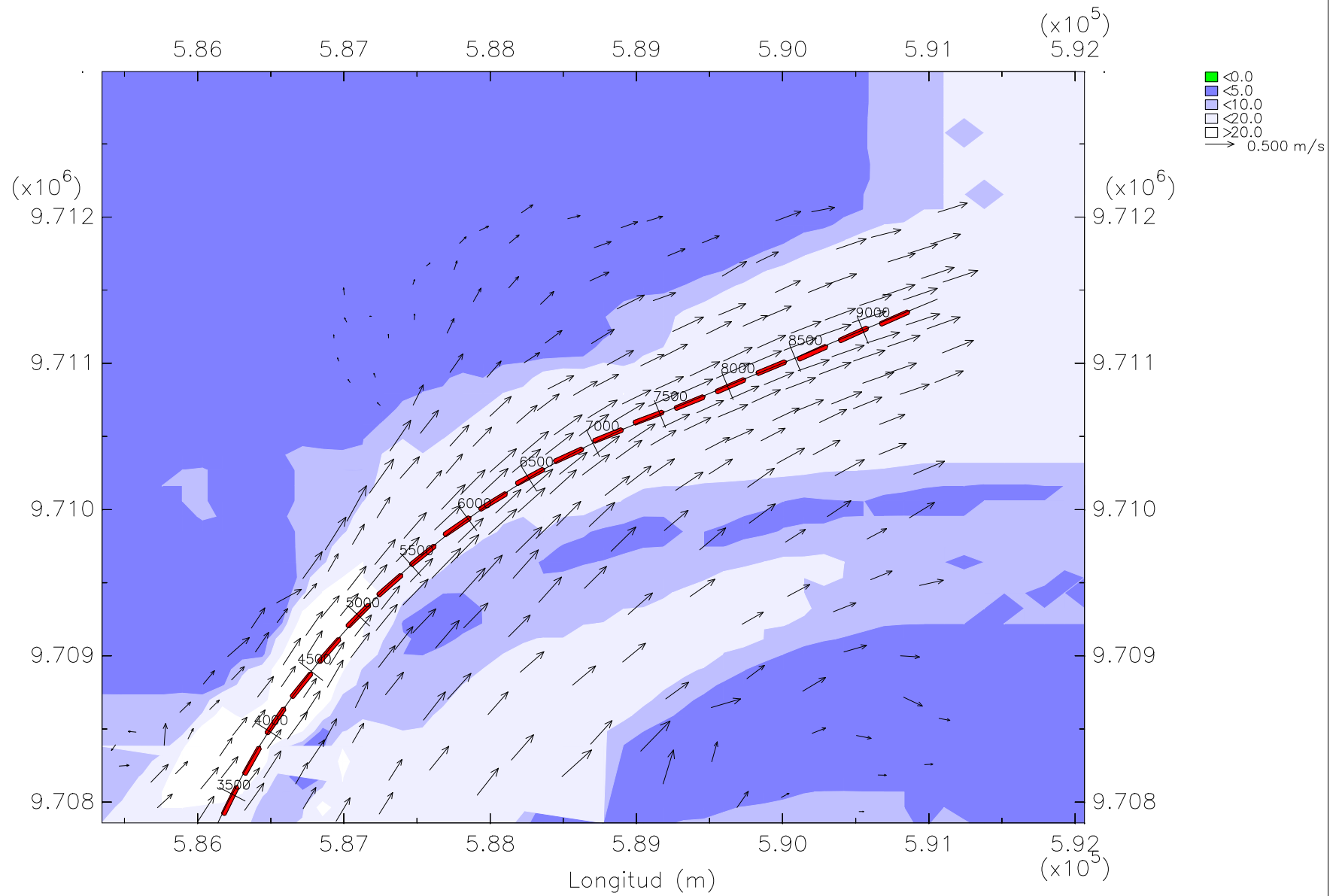
En la zona 2, tramo 2

Bajo condiciones de oleaje y llenante

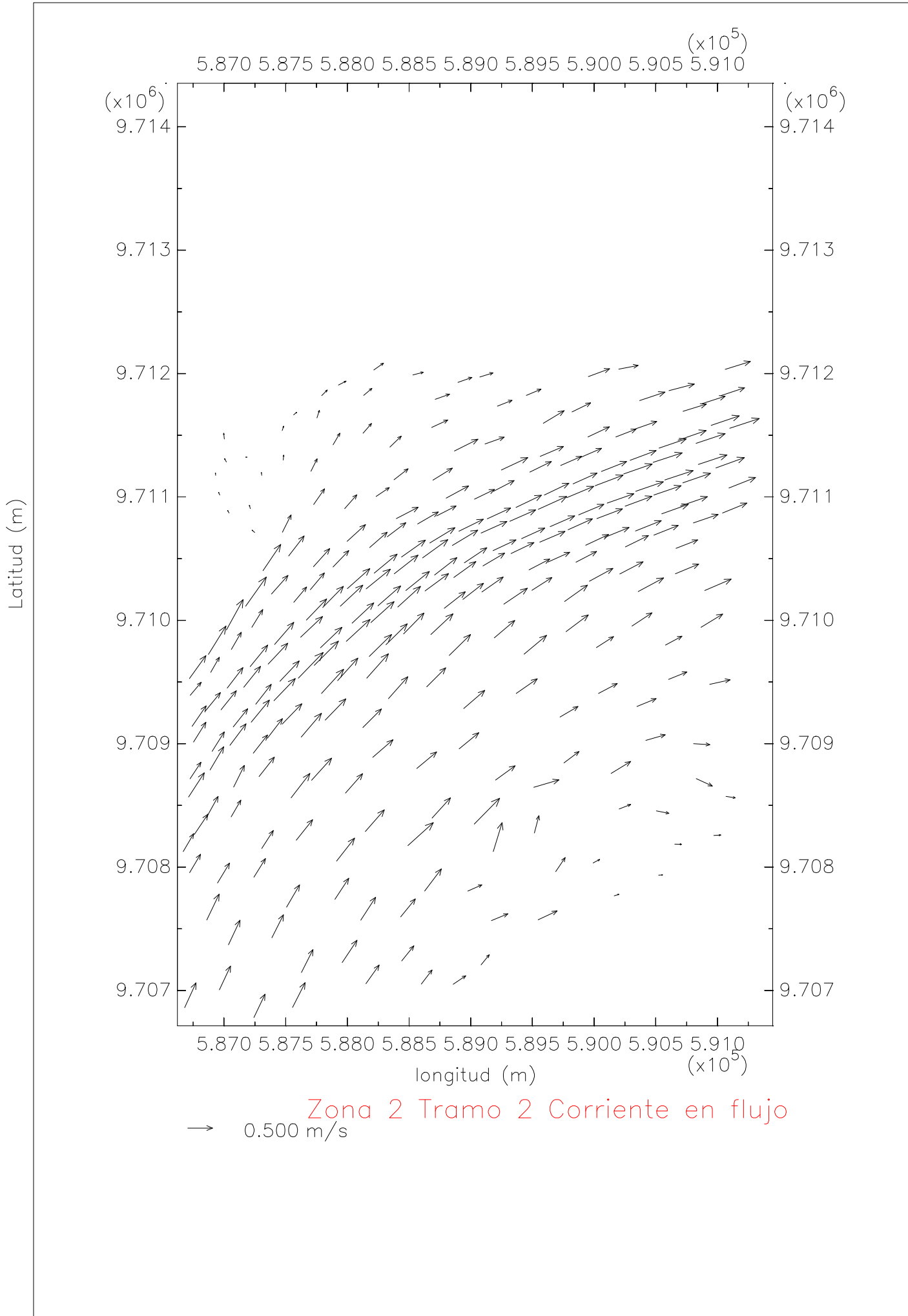


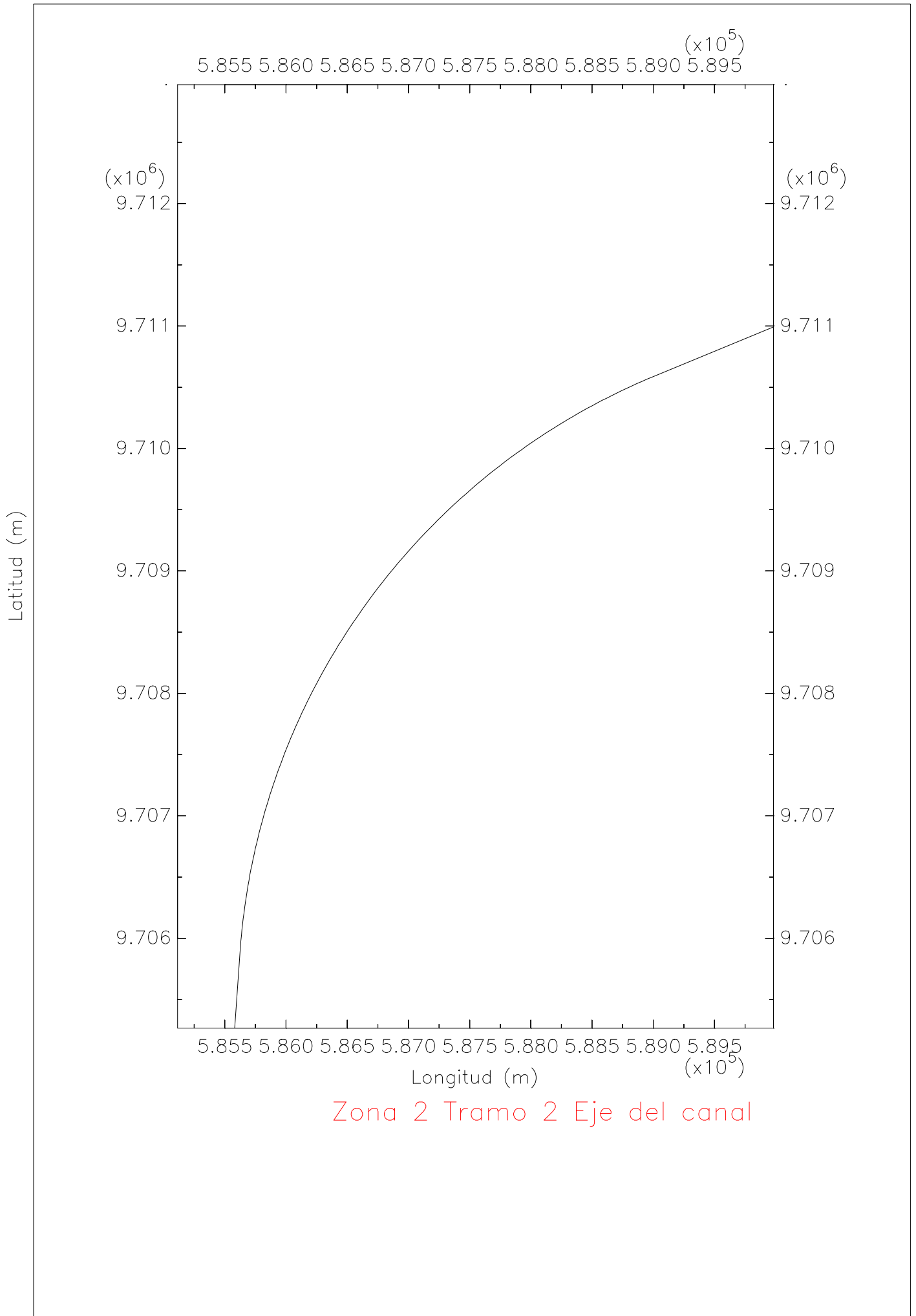
Zona 2 Tramo 2 Profundidad

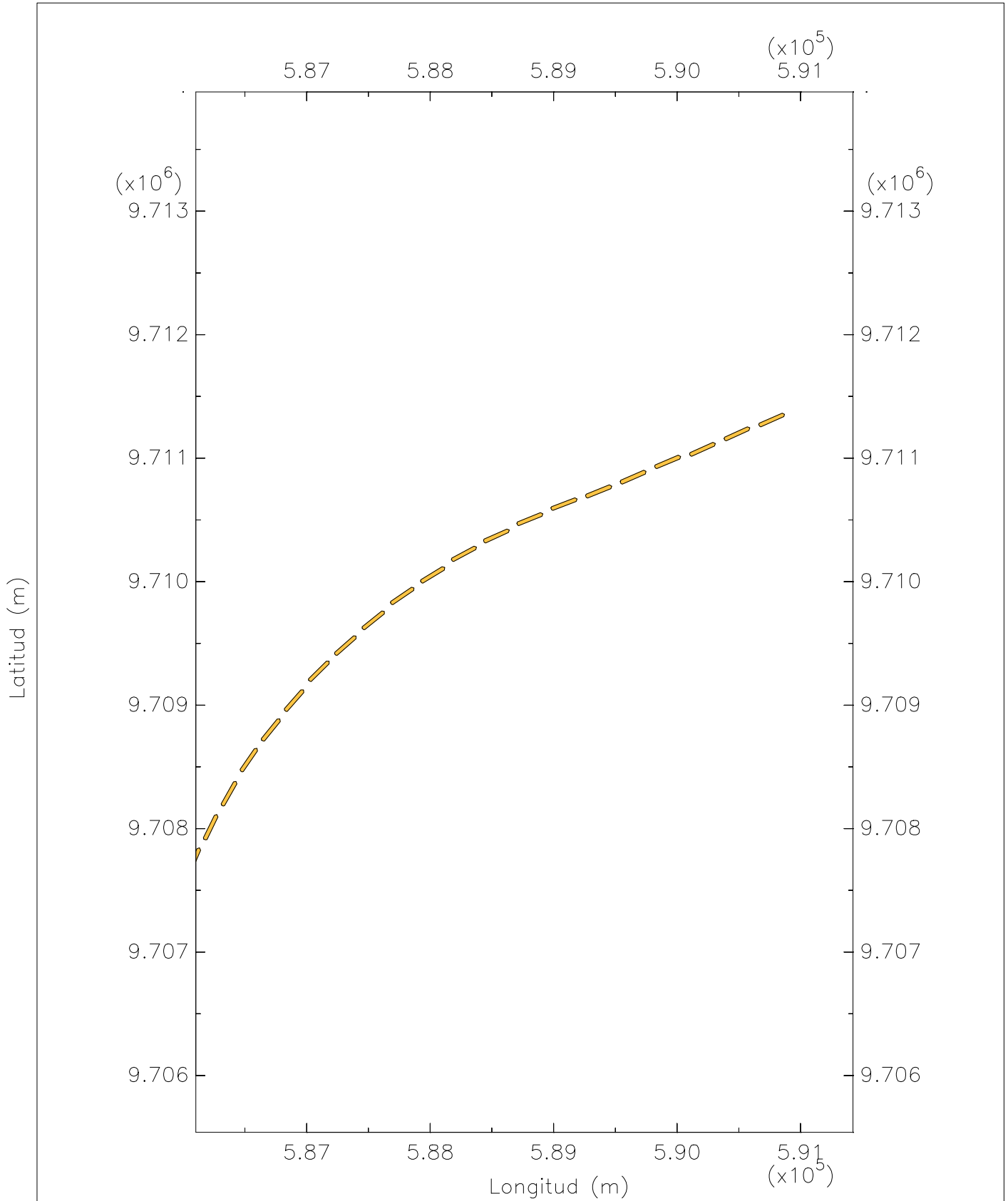




Z2T2 Trayectoria del barco granelero en flujo

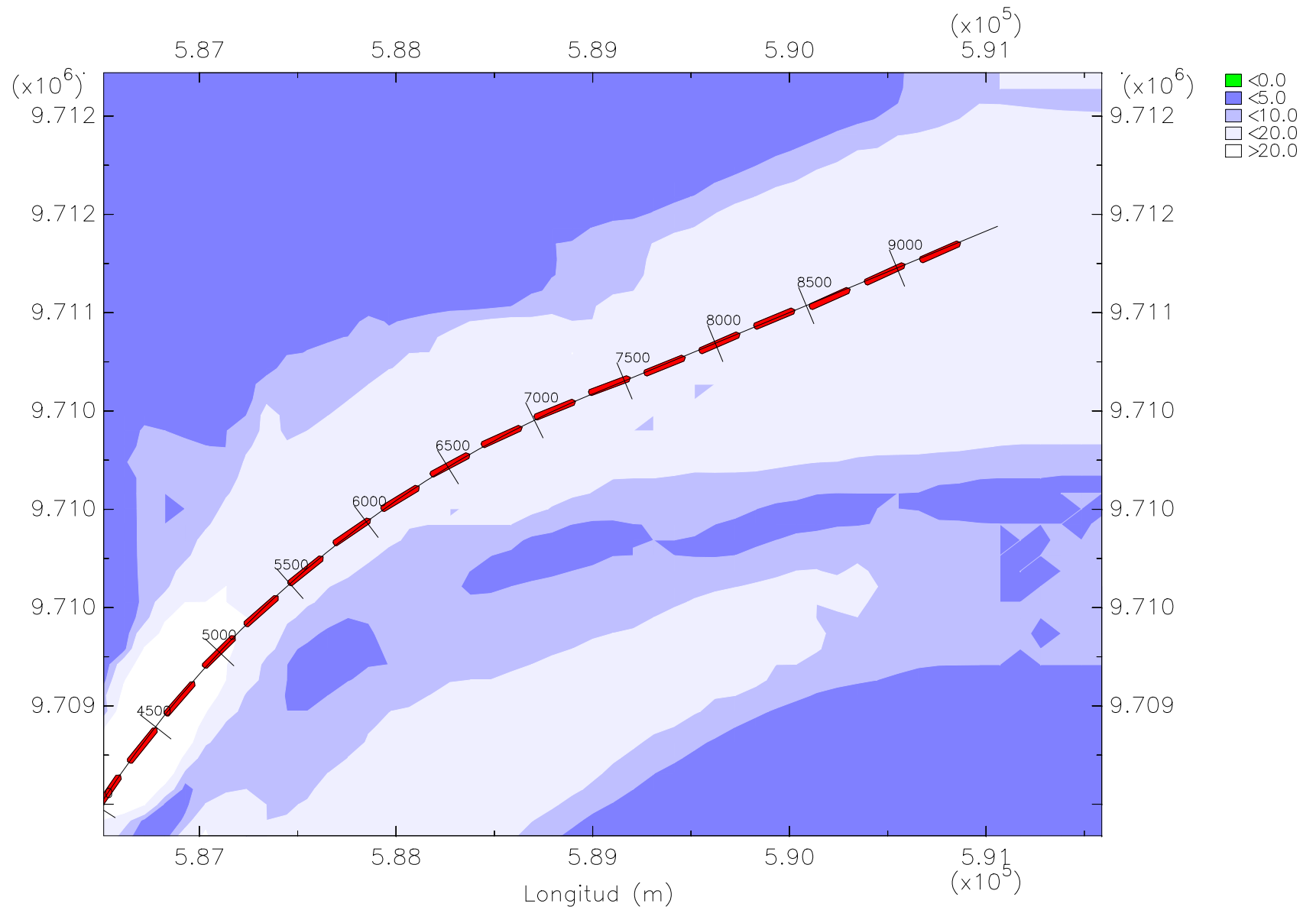






Z2T1 Trayectoria del barco granelero en flujo

Latitud (m)



Z2T2 Trayectoria del barco granelero en flujo

