

**Barco tipo granelero**

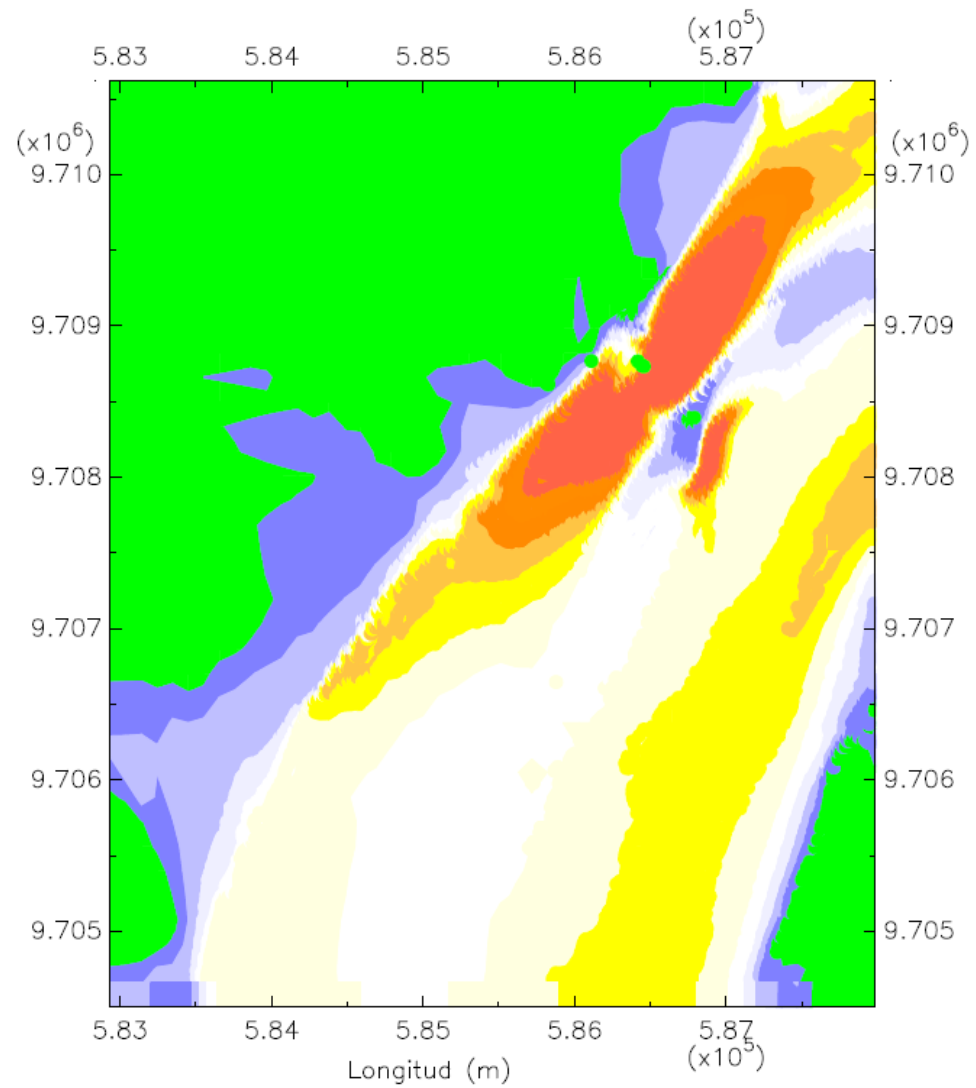
**Eslora: 225 m**

**Manga: 32.20 m**

**Calado: 12 m**

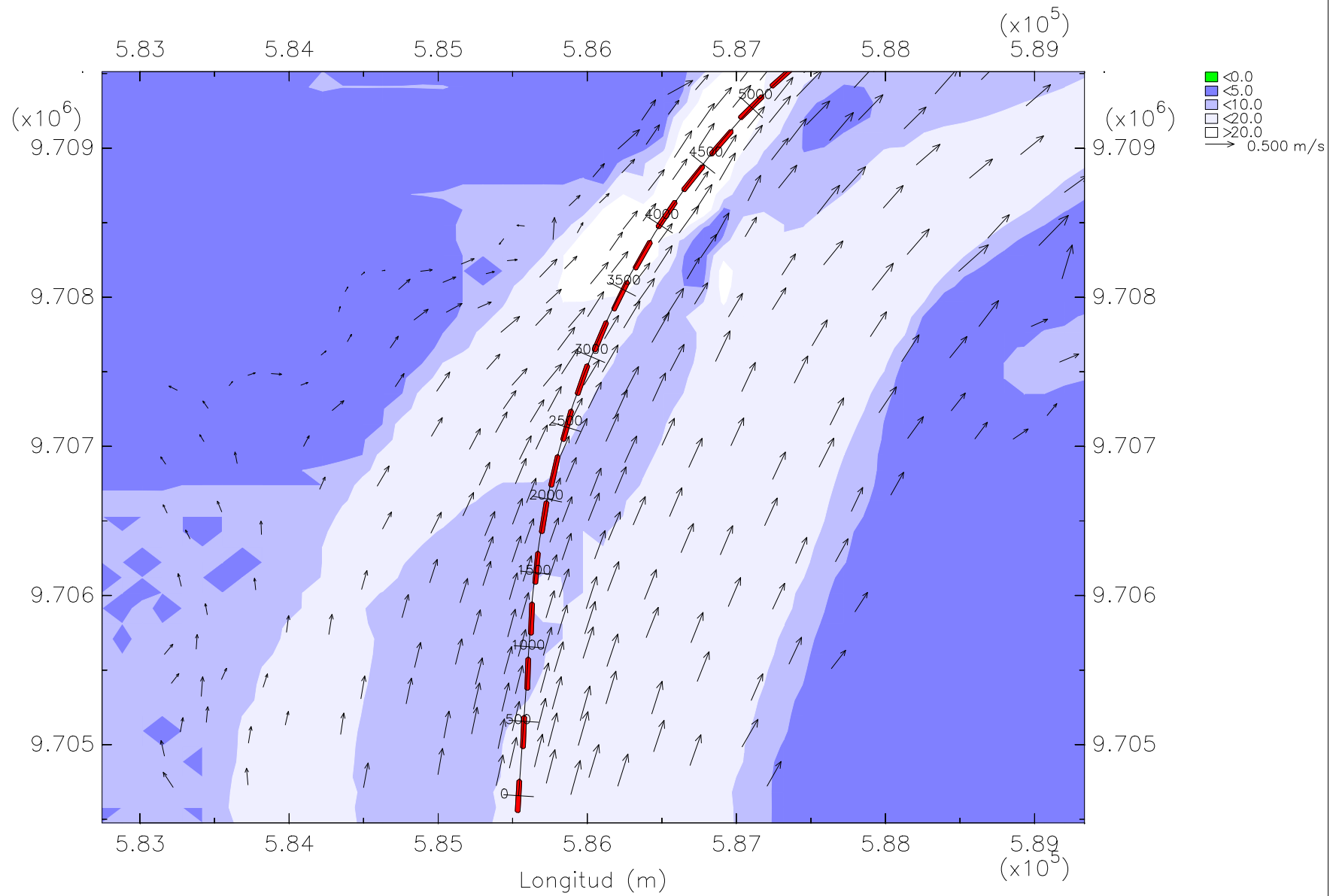
**En la zona 2, tramo 1**

**Bajo condiciones de oleaje y llenante**

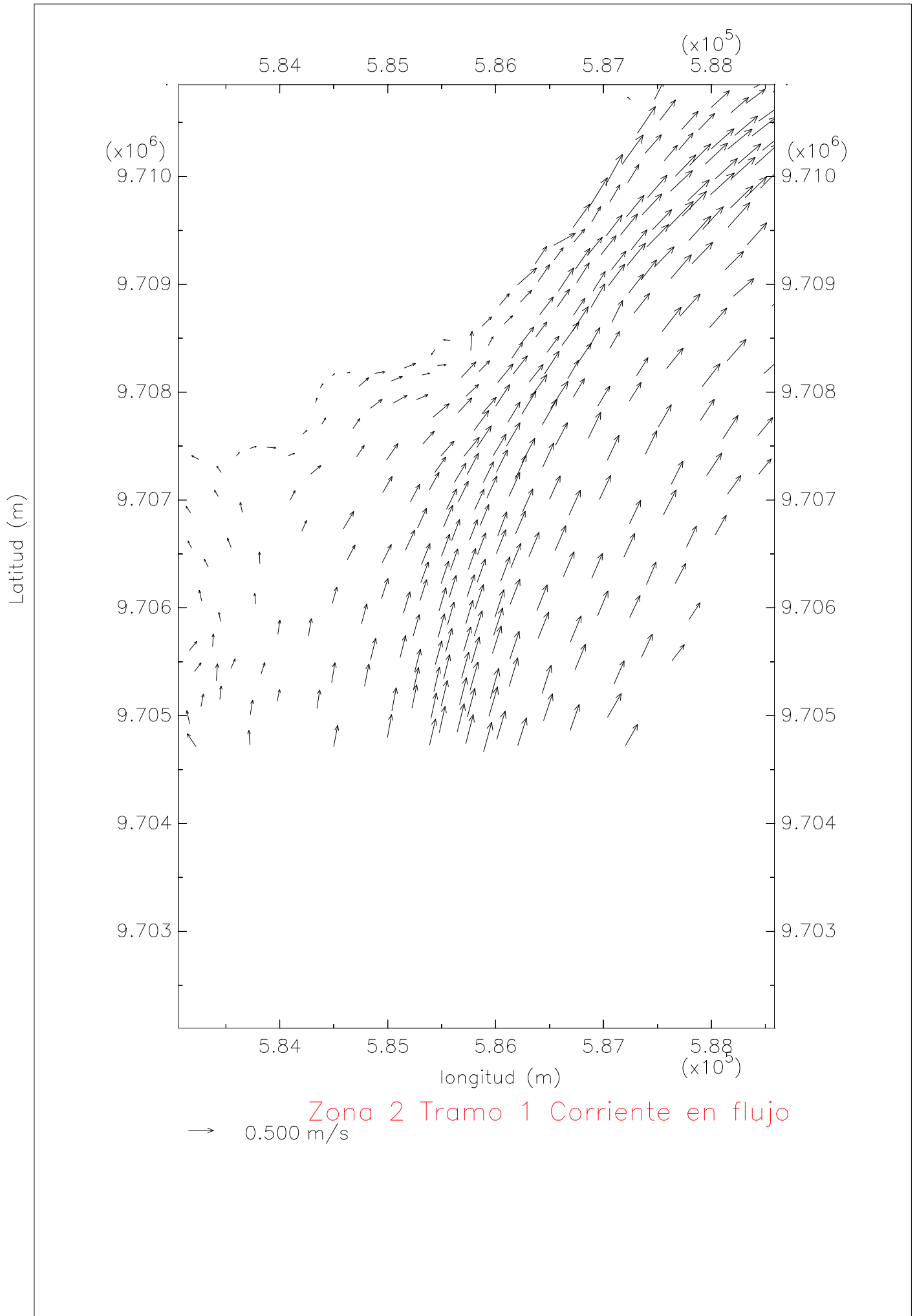


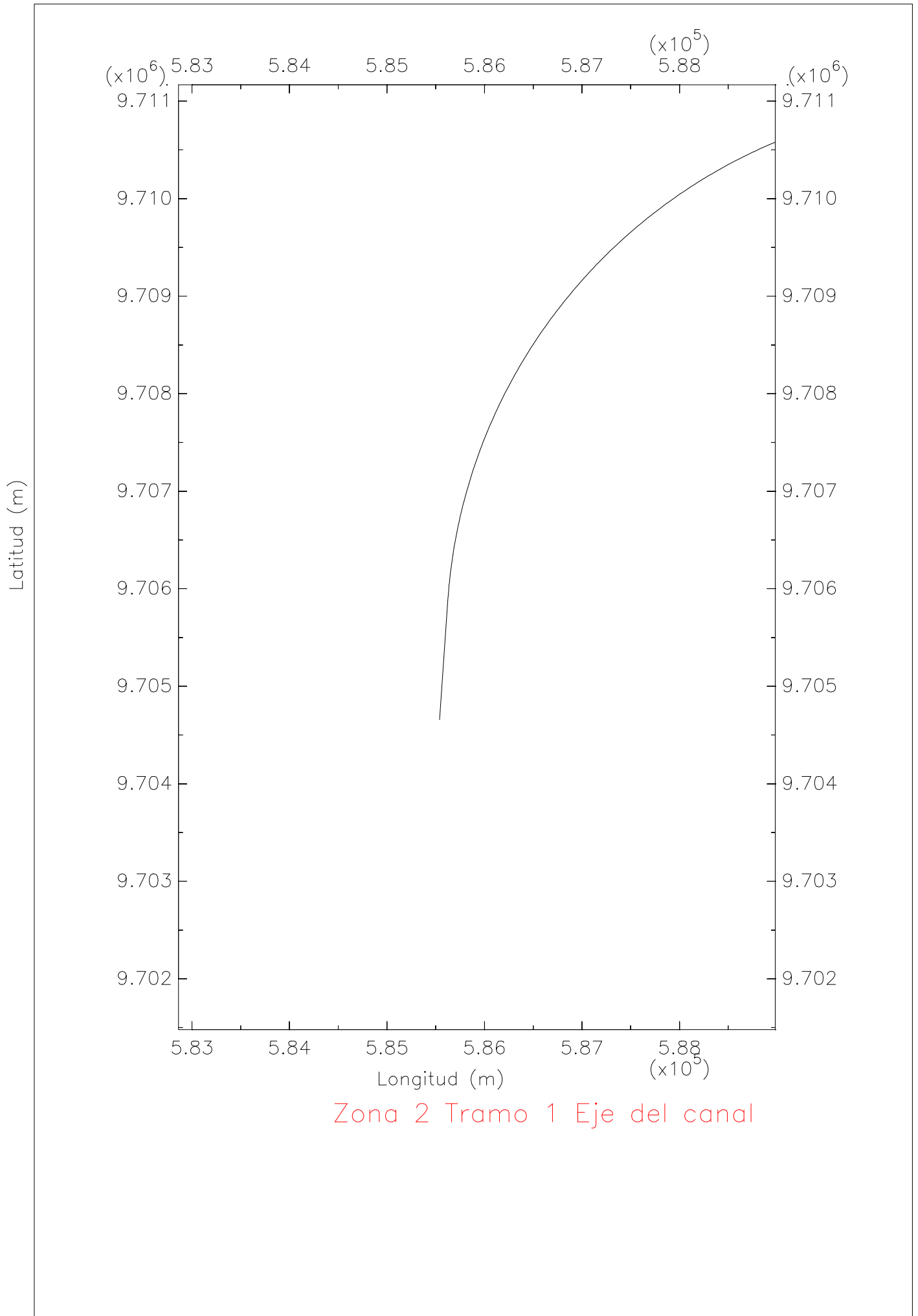
Zona 2 Tramo 1 Profundidad

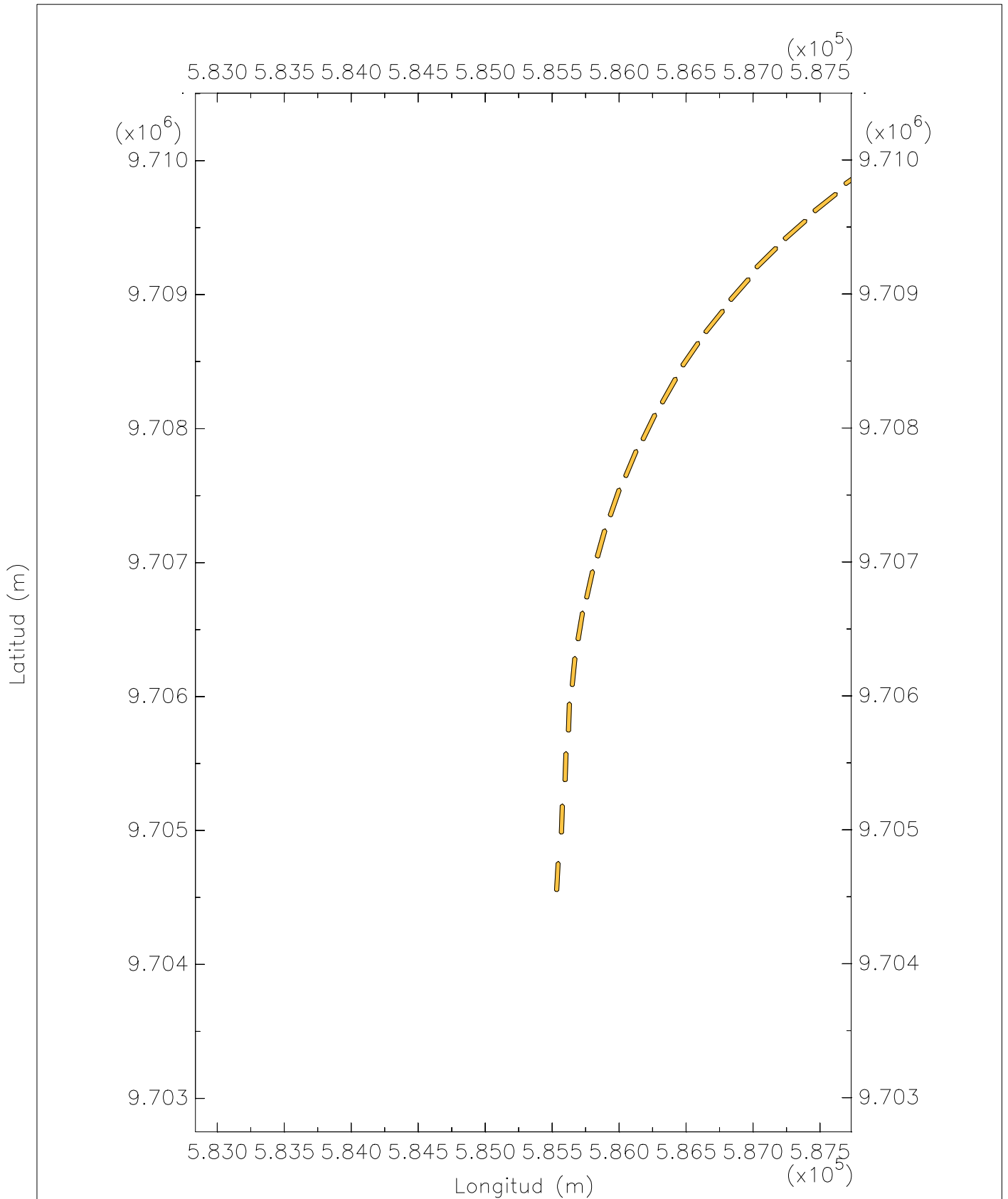
- <2.0
- <4.0
- <6.0
- <8.0
- <10.0
- <12.0
- <14.0
- <16.0
- <18.0
- >20.0



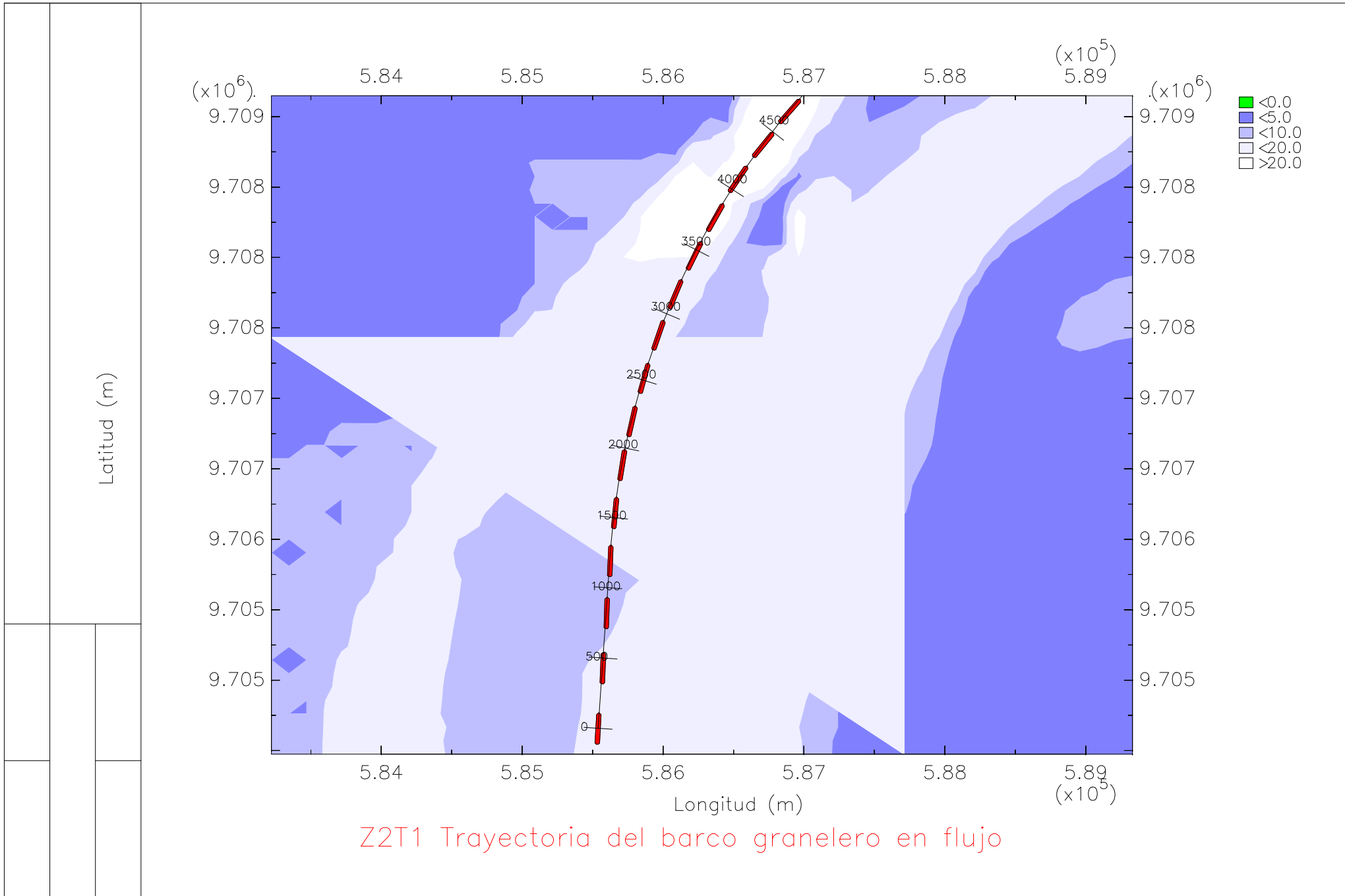
Z2T1 Trayectoria del barco granelero en flujo







Z2T1 Trayectoria del barco granelero en flujo



Z2T1 Trayectoria del barco granelero en flujo

