

Barco portacontenedores

Tipo panamax

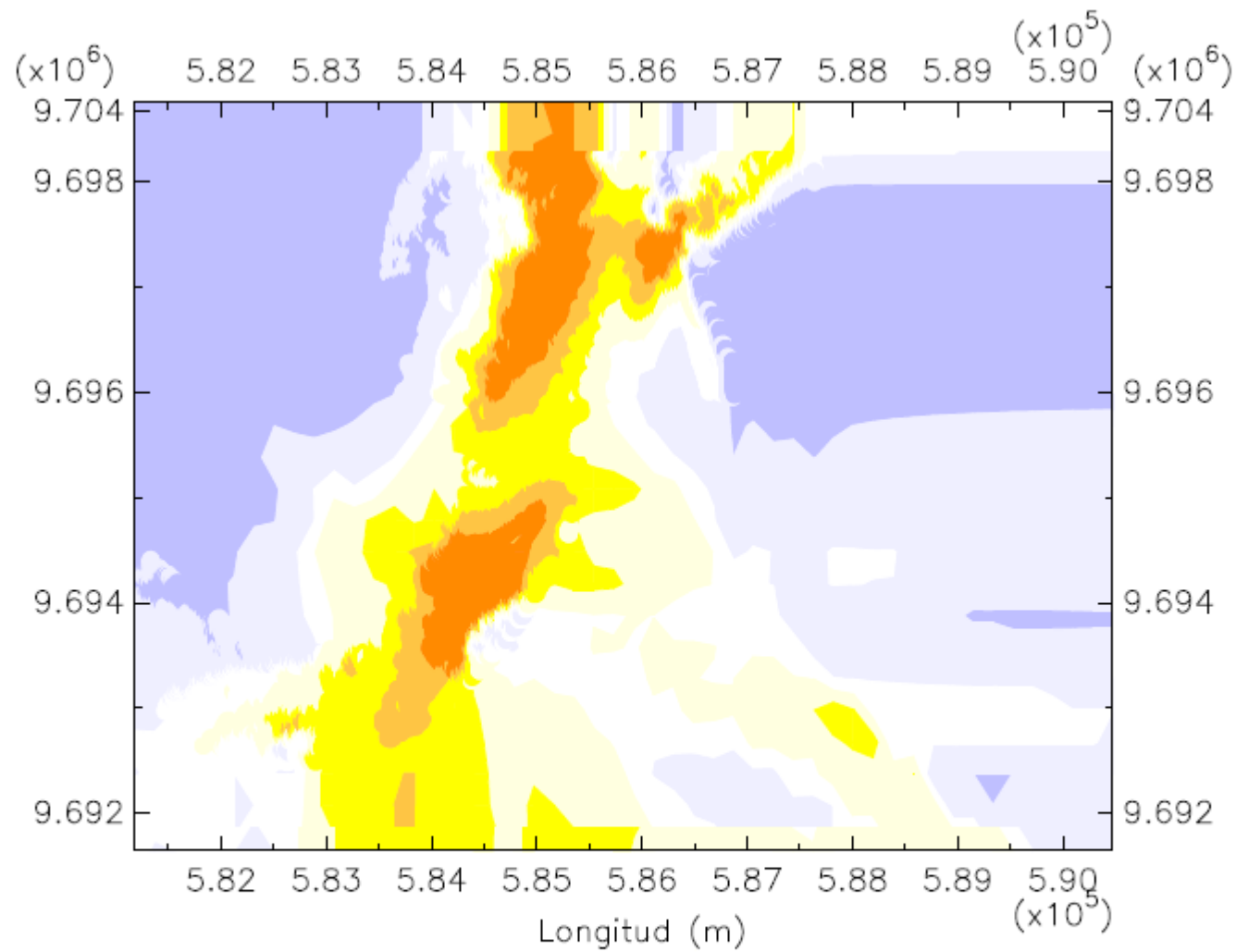
Eslora: 289 m

Manga: 32.20 m

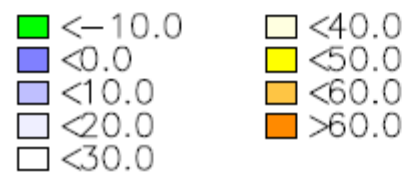
Calado: 11.60 m

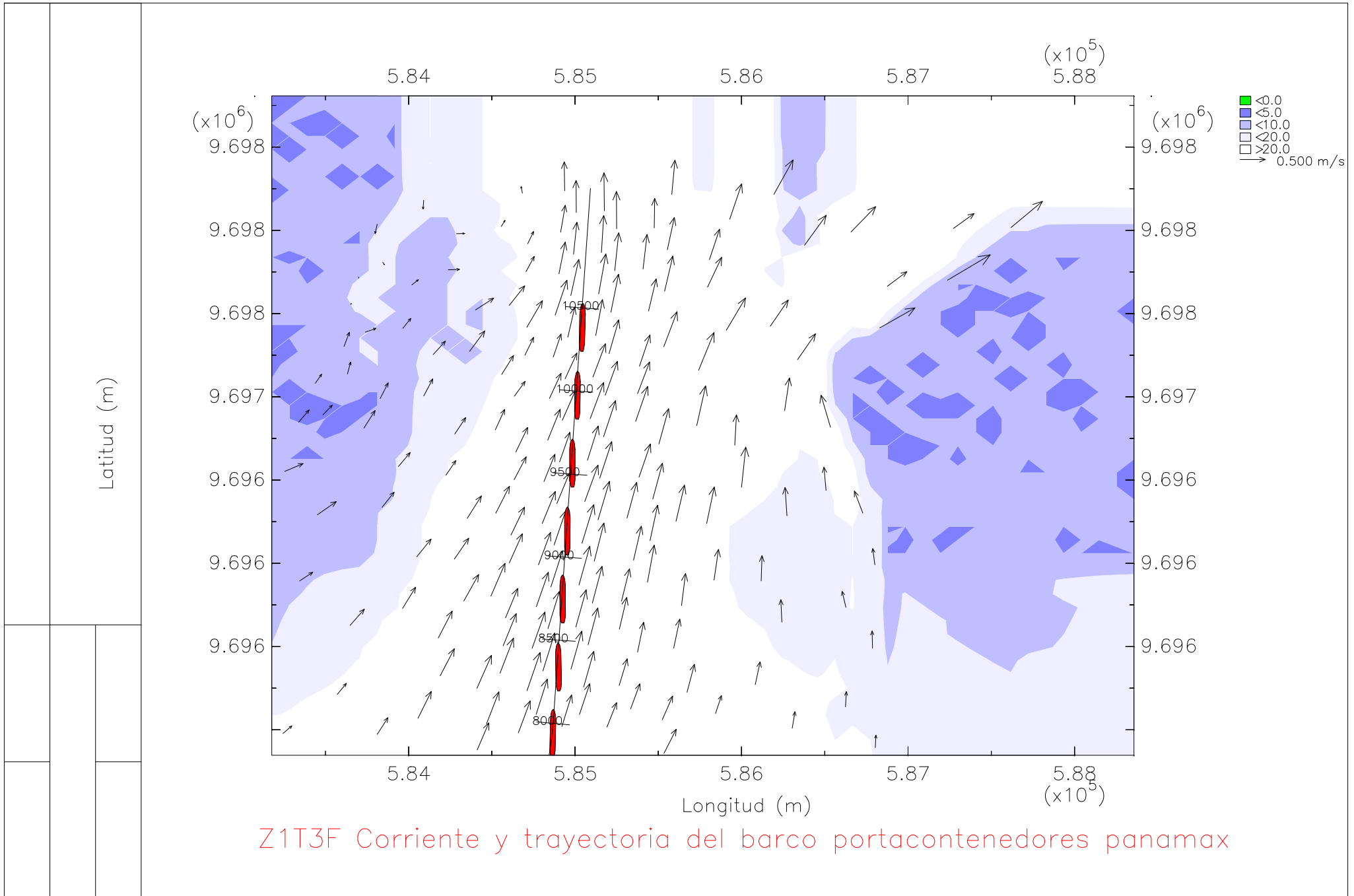
En la zona 1, tramo 3

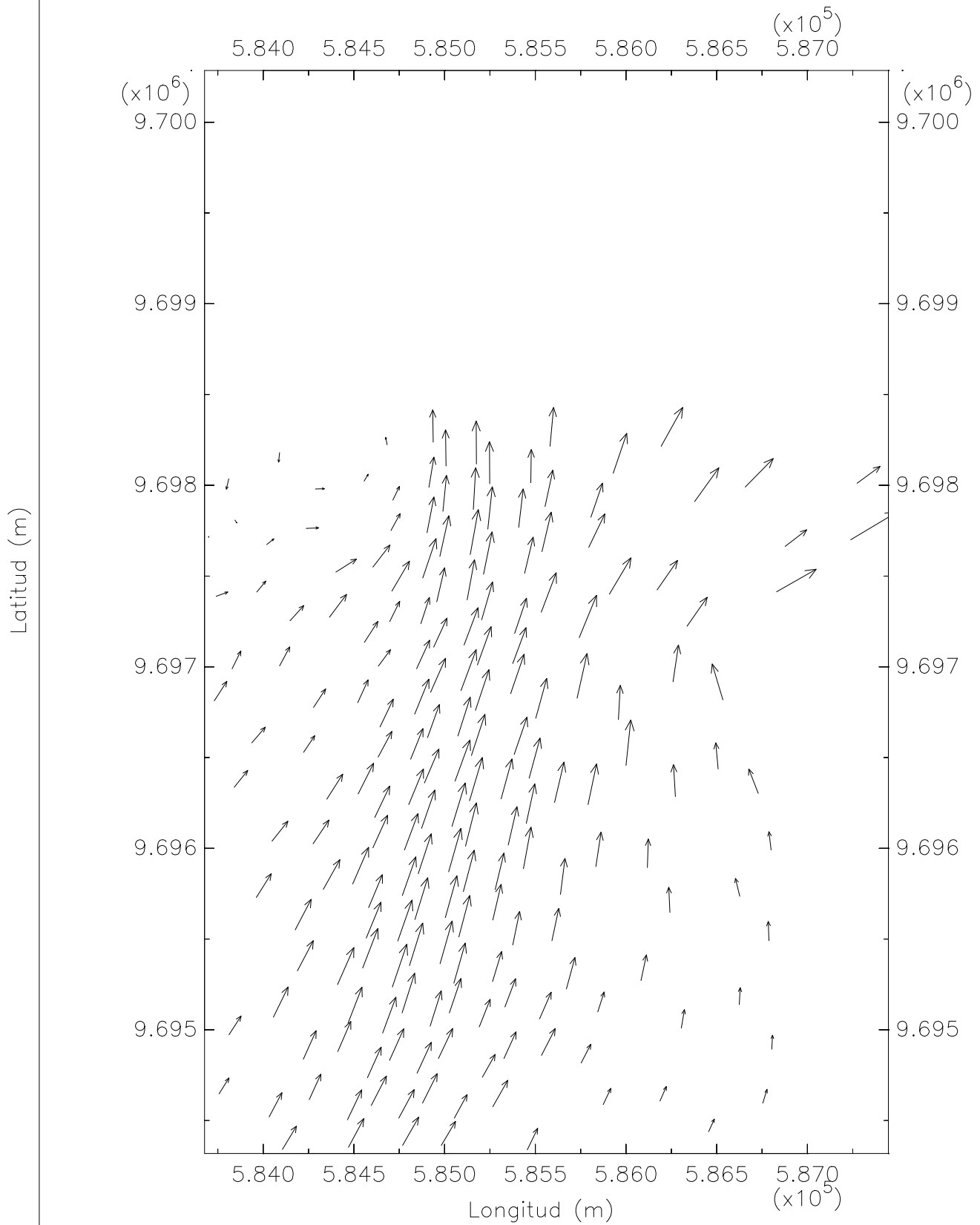
Bajo condiciones de oleaje y llenante



Zona 1 Tramo 3 Profundidad

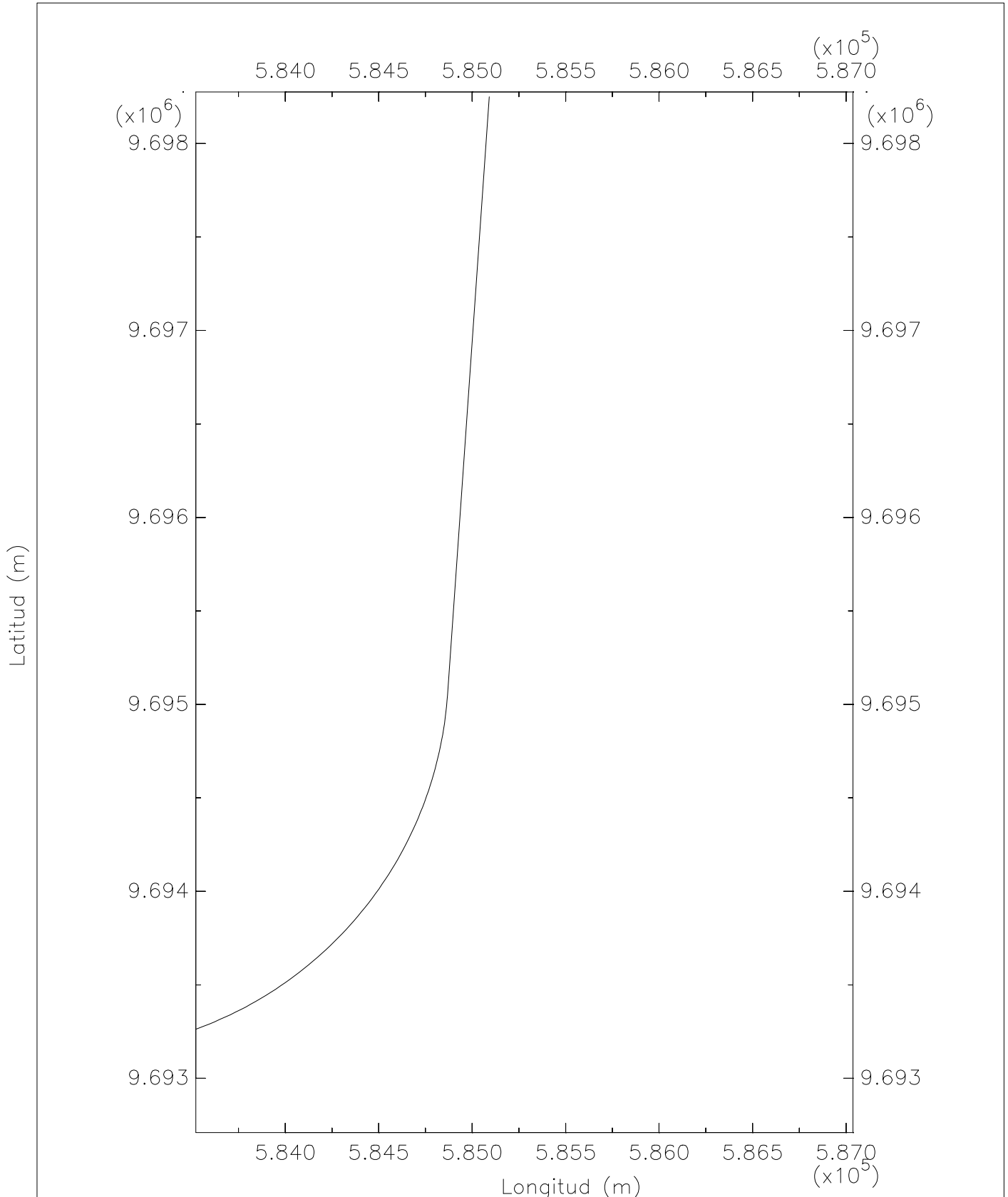




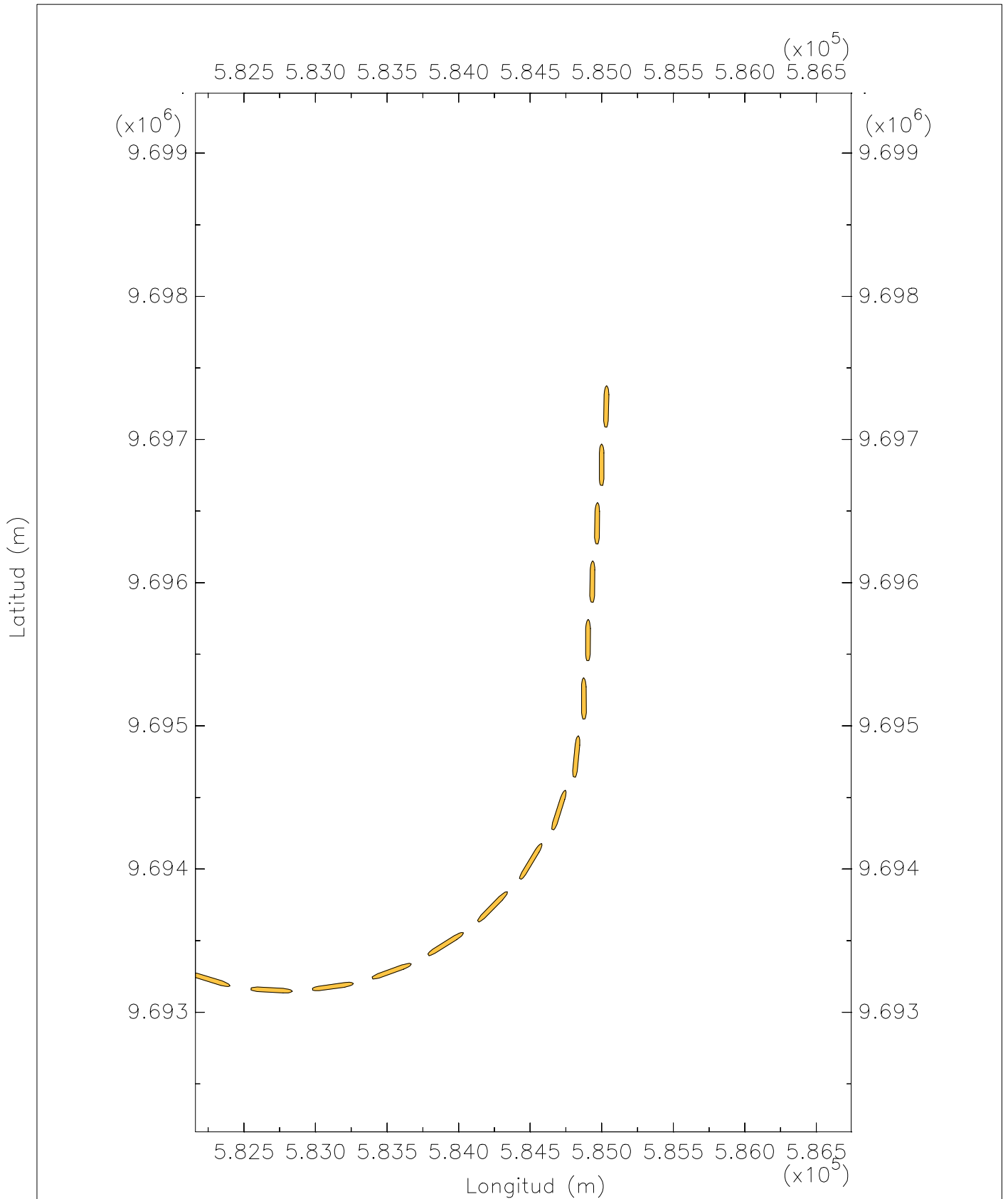


Zona 1 Tramo 2 Corriente

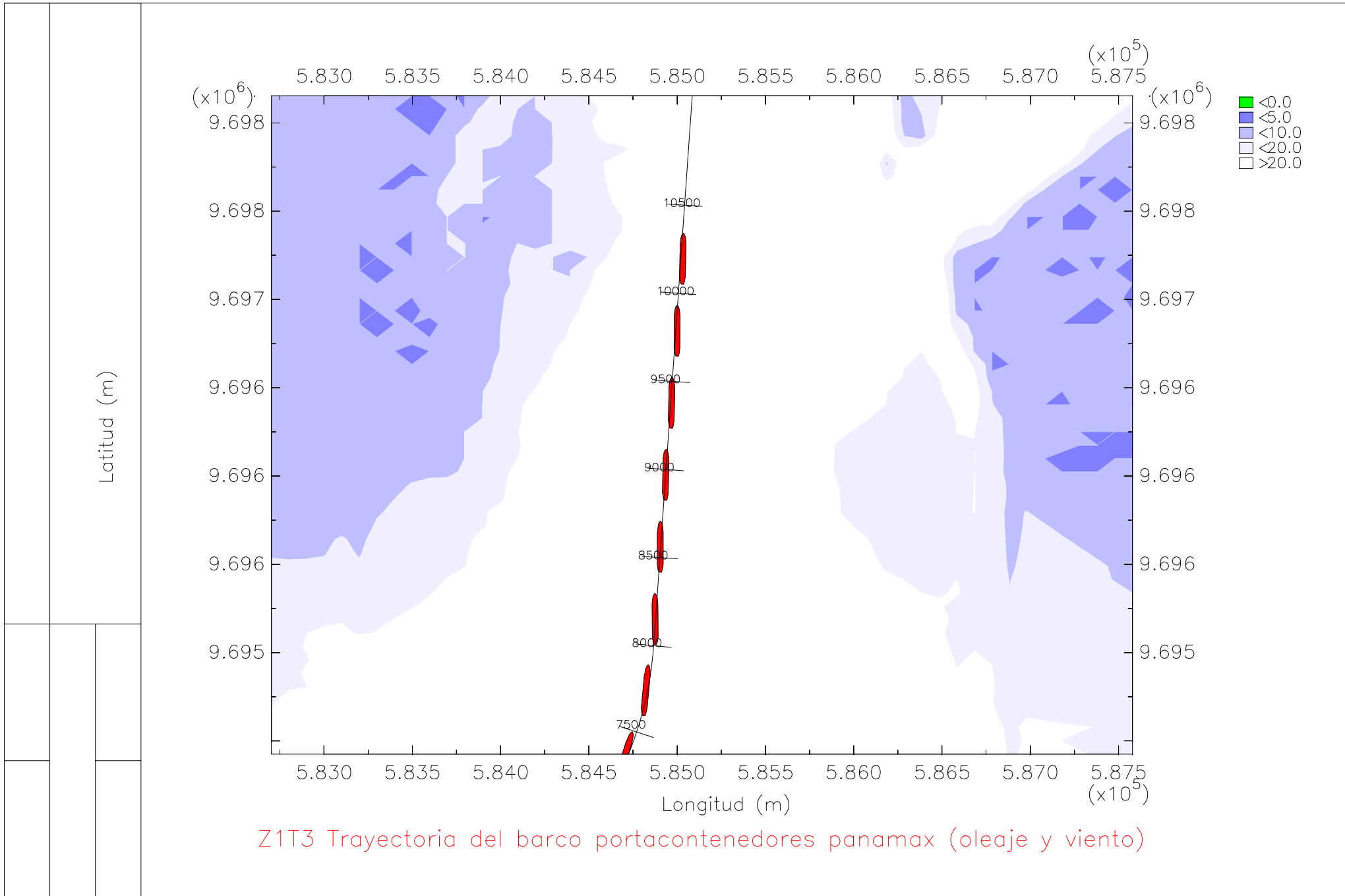
→ 0.500 m/s

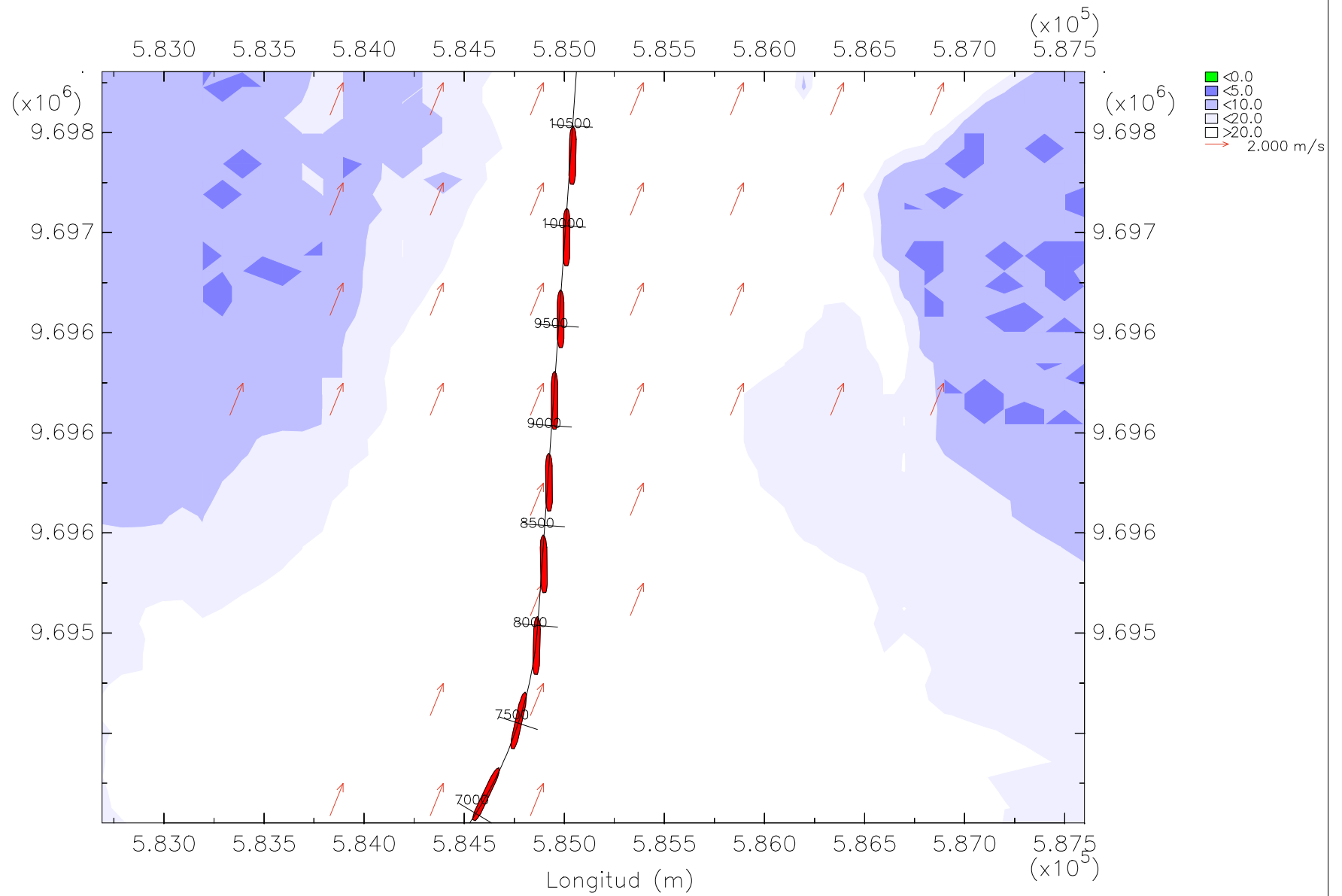


Zona 1 Tramo 3 Eje canal



Z1FT3 Trayectoria del barco portacontenedores panamax





Z1T3 Vectores de viento

