

Barco portacontenedores

Tipo panamax

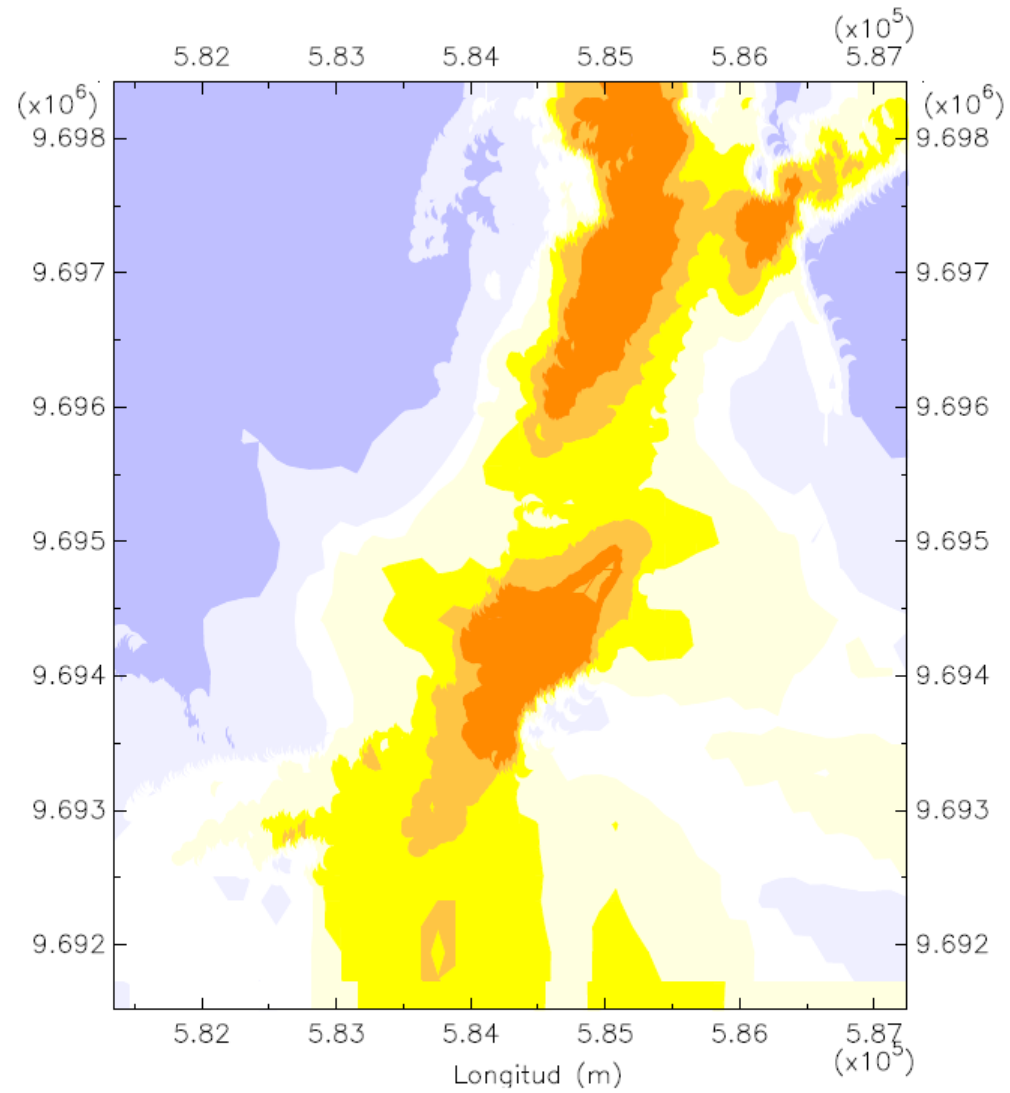
Eslora: 289 m

Manga: 32.20 m

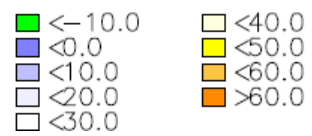
Calado: 11.60 m

En la zona 1, tramo 2

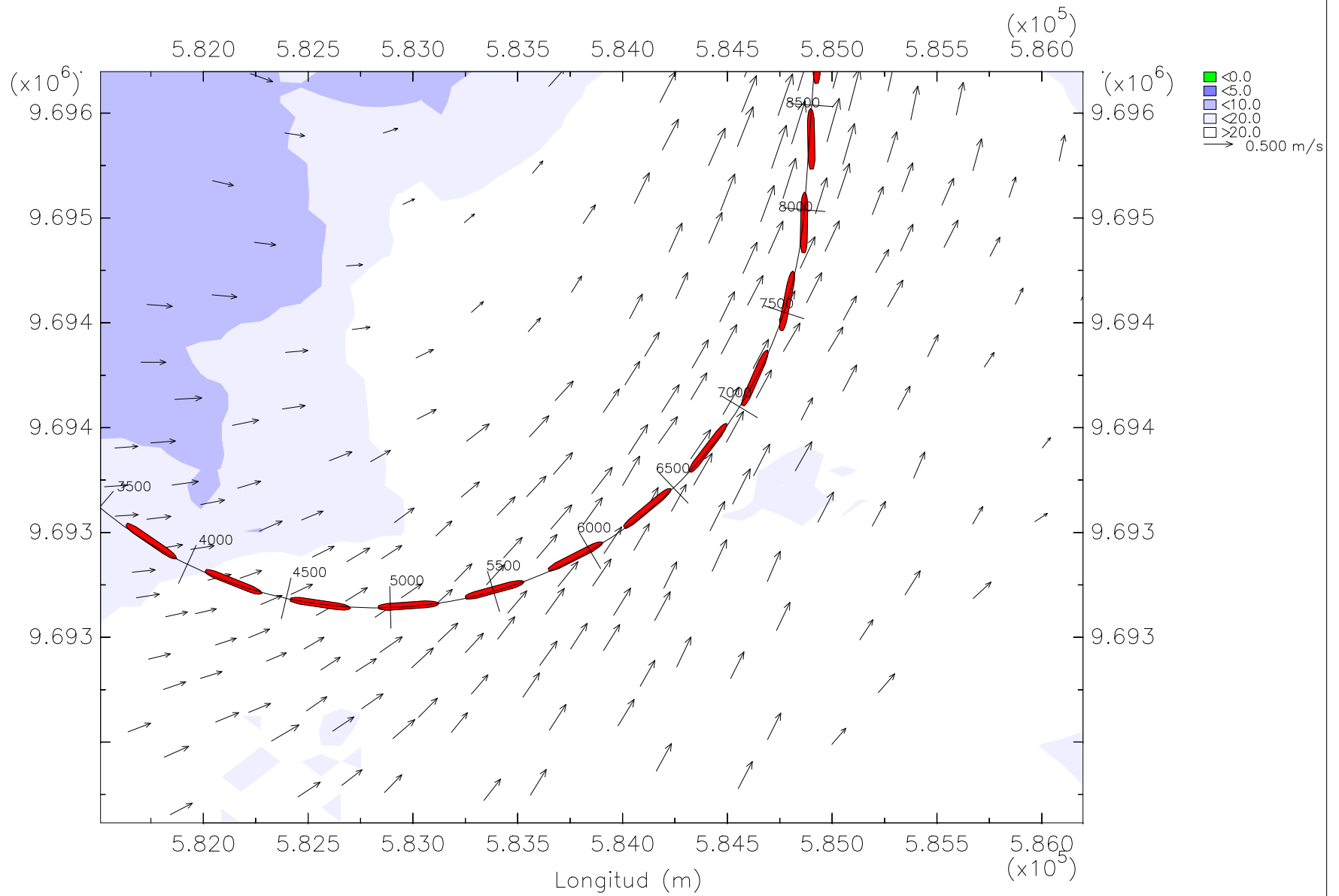
Bajo condiciones de oleaje y llenante



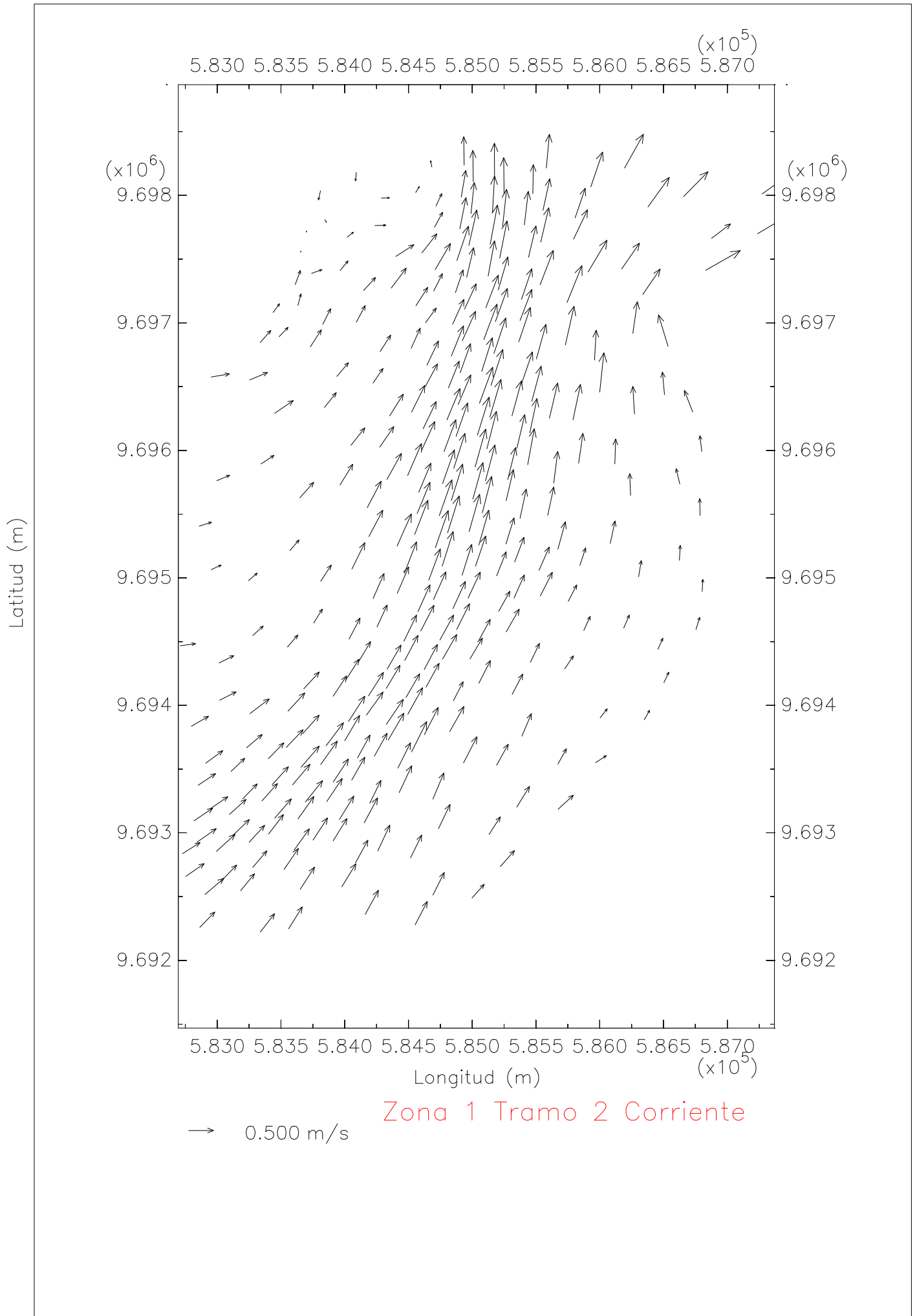
Zona 1 Tramo 2 Profundidad

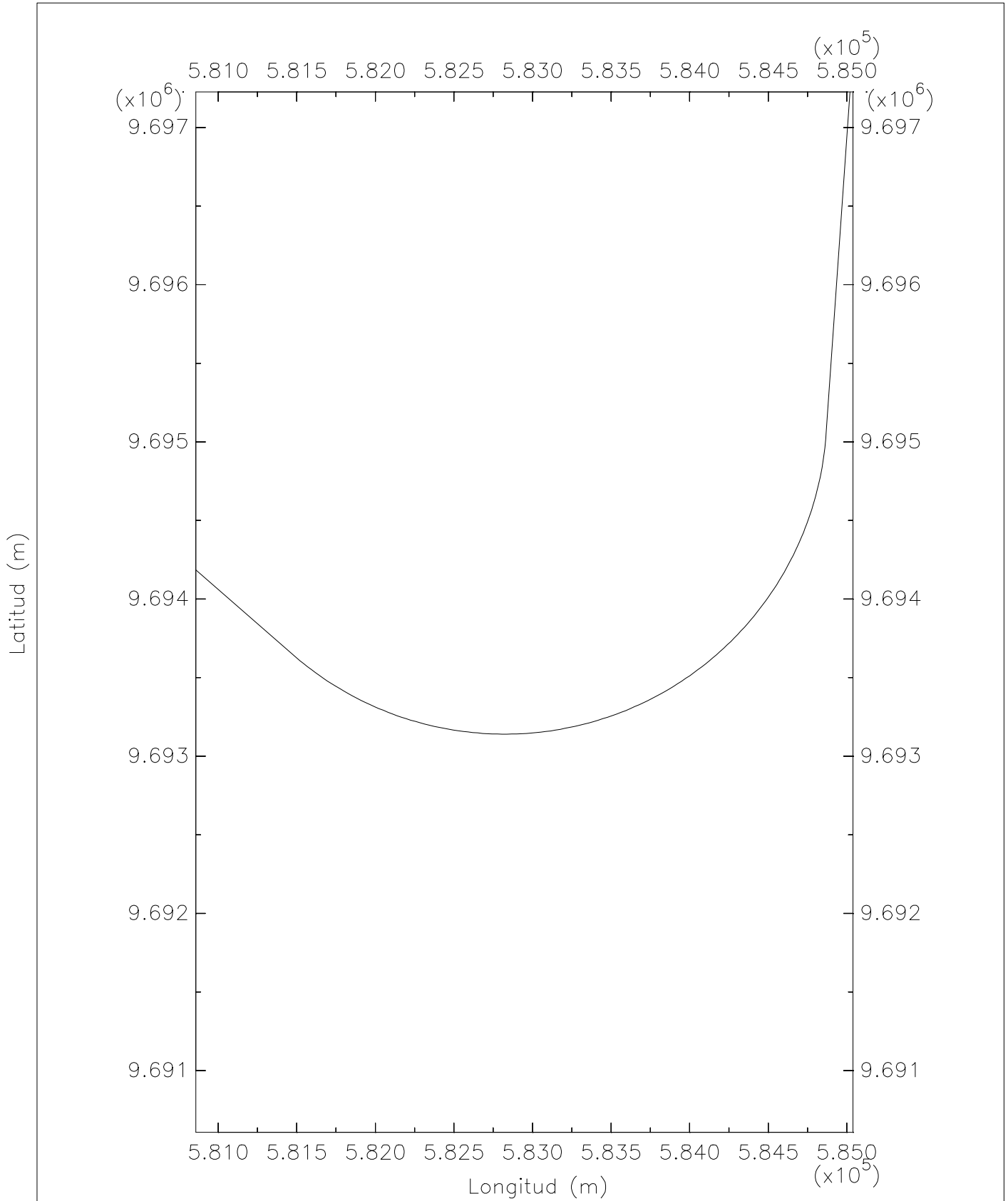


Latitud (m)

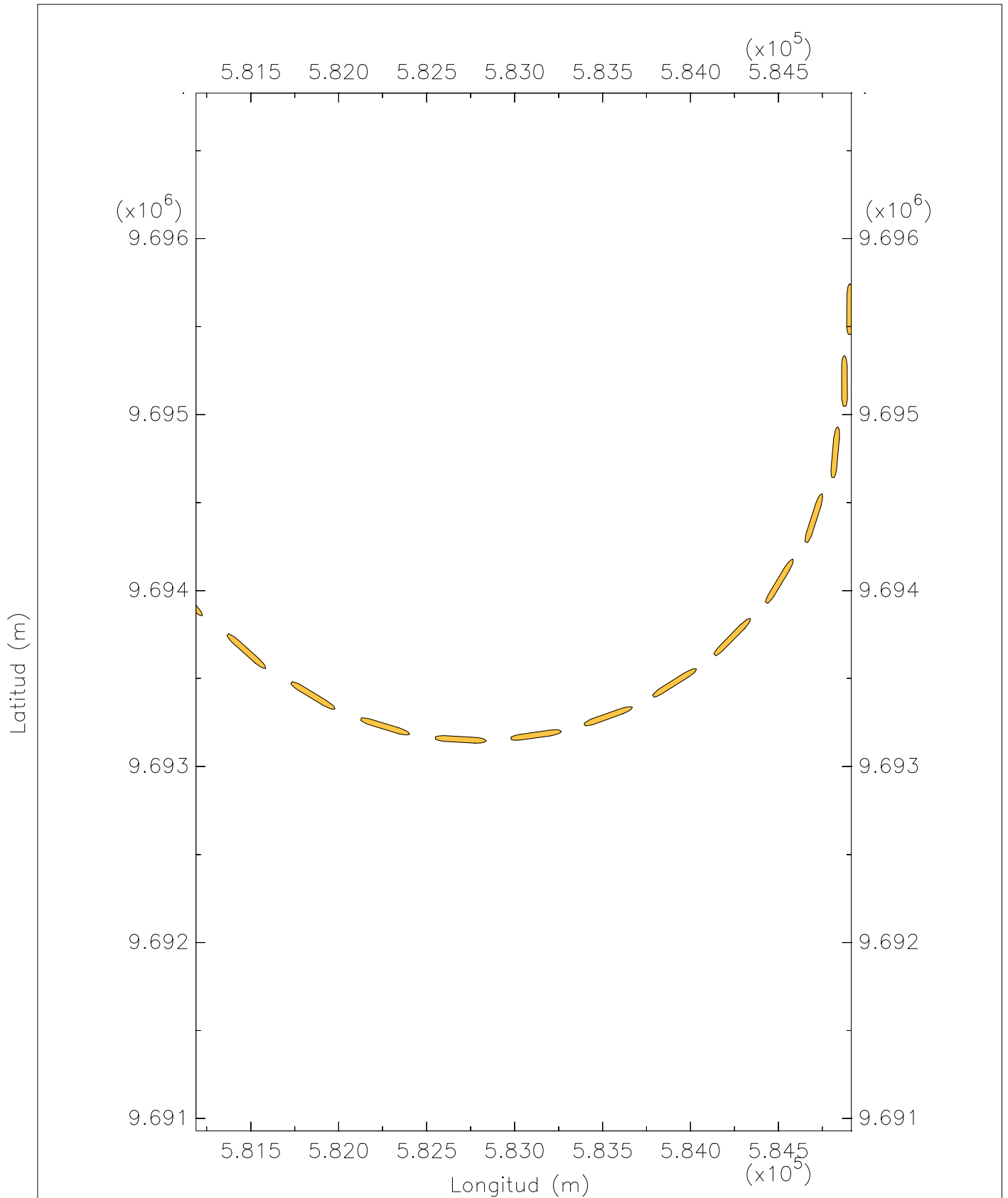


Z1T2F Corriente y trayectoria del barco portacontenedores panamax

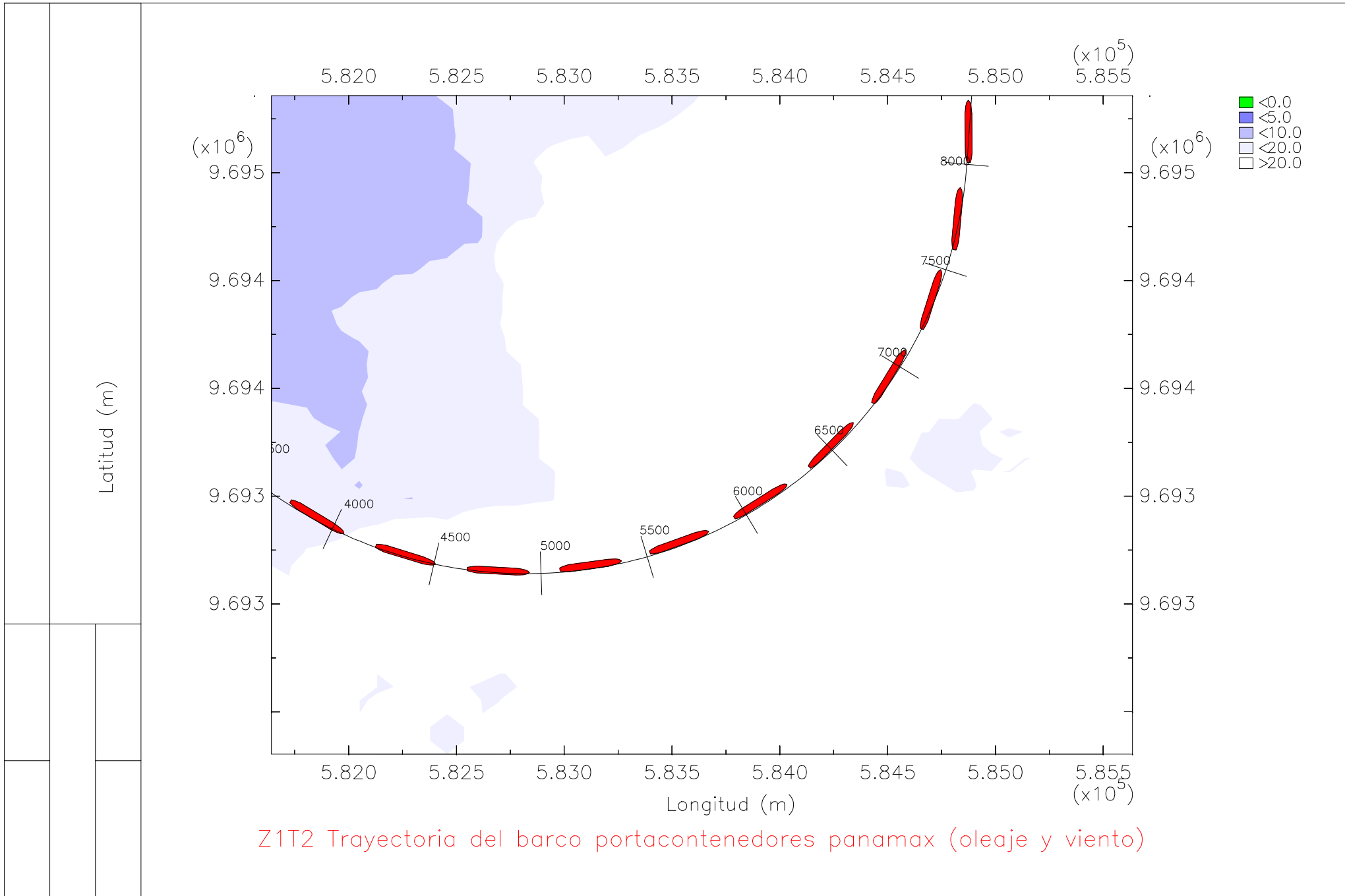


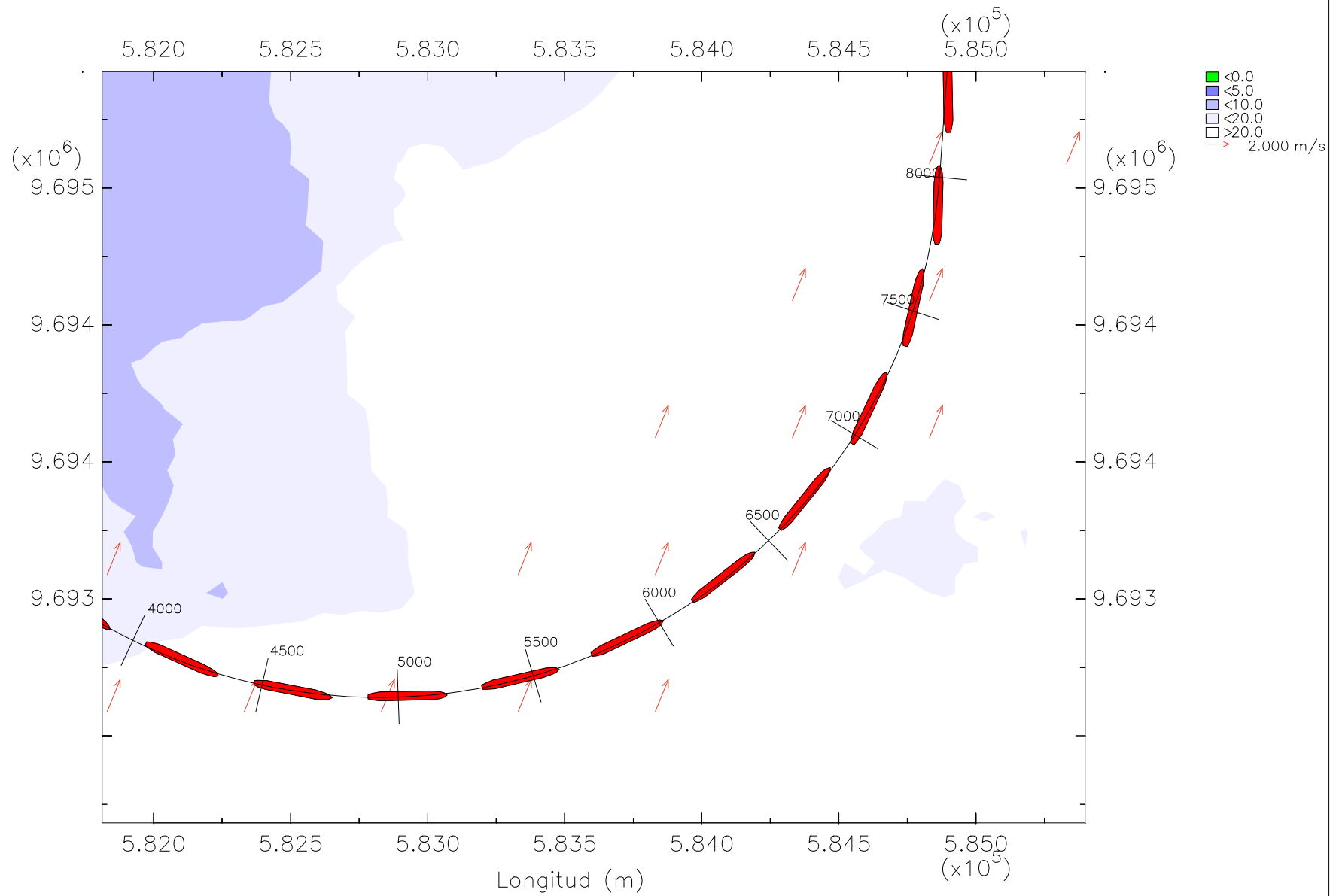


Zona 1 Tramo 2 Eje canal



Z1FT2 Trayectoria del barco portacontenedores panamax





Z1T2 Vectores de viento

