

Barco portacontenedores

Tipo post-panamax

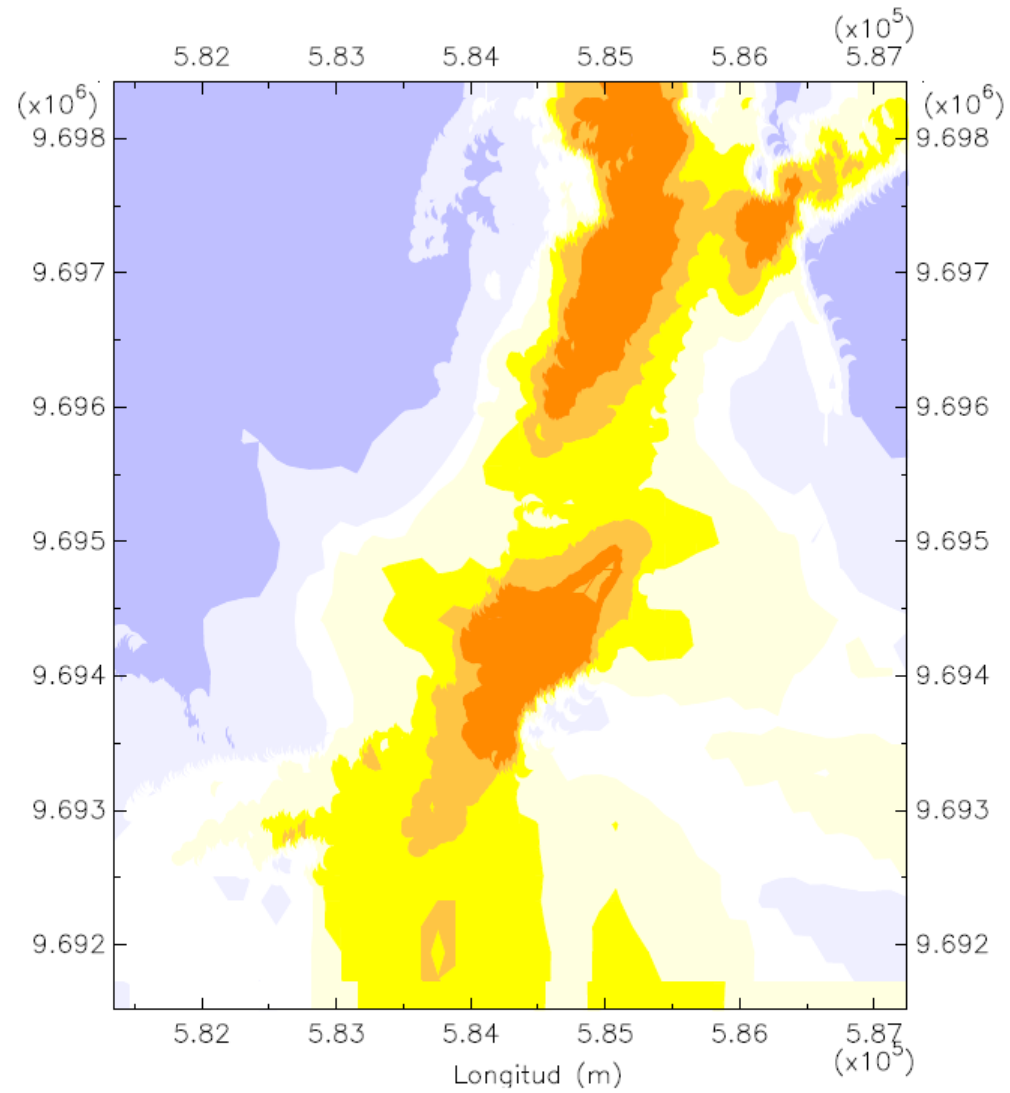
Eslora: 318.20 m

Manga: 42.800 m

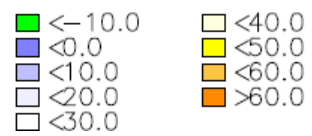
Calado: 11.60 m

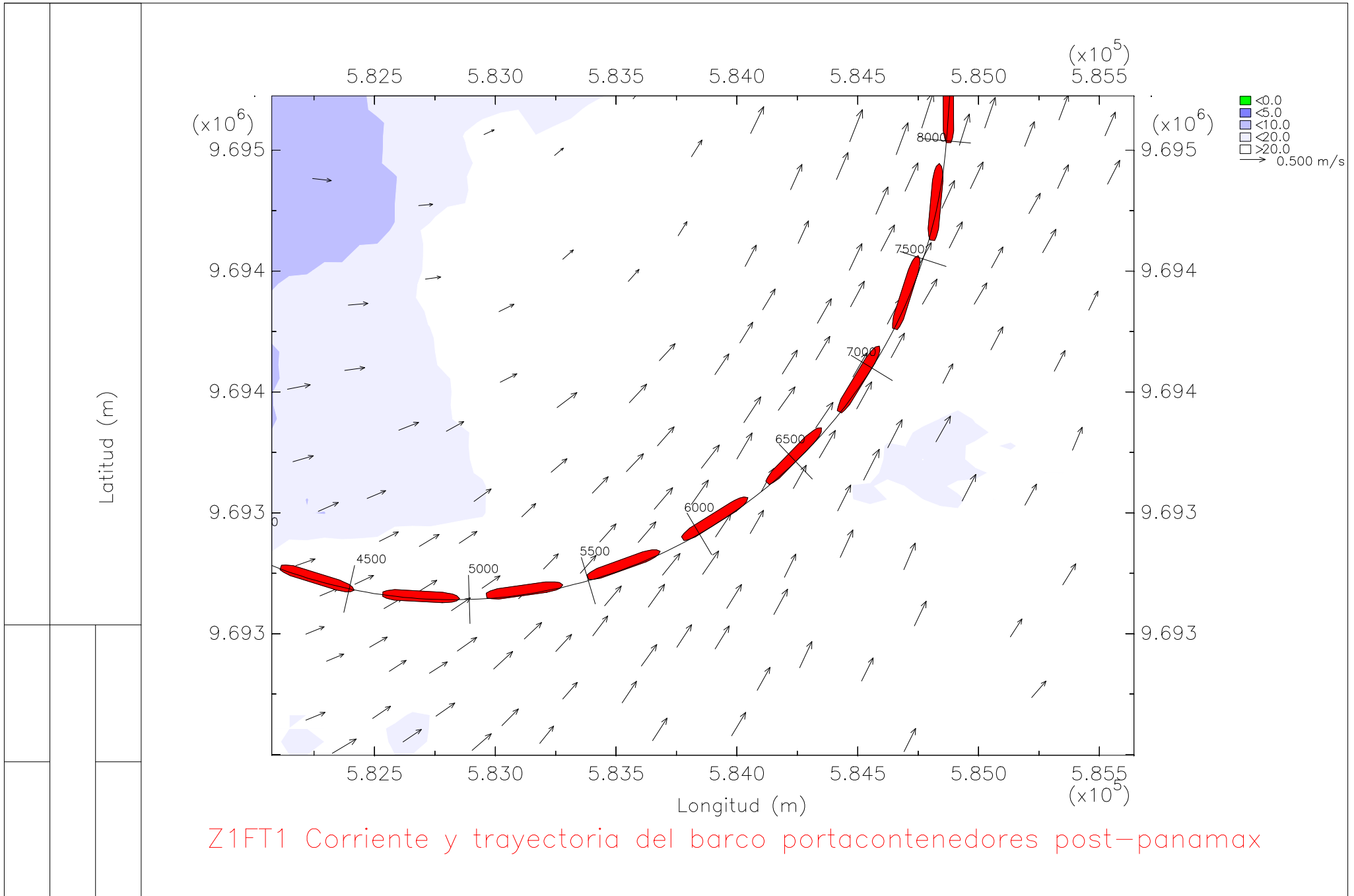
En la zona 1, tramo 2

Bajo condiciones de oleaje y llenante

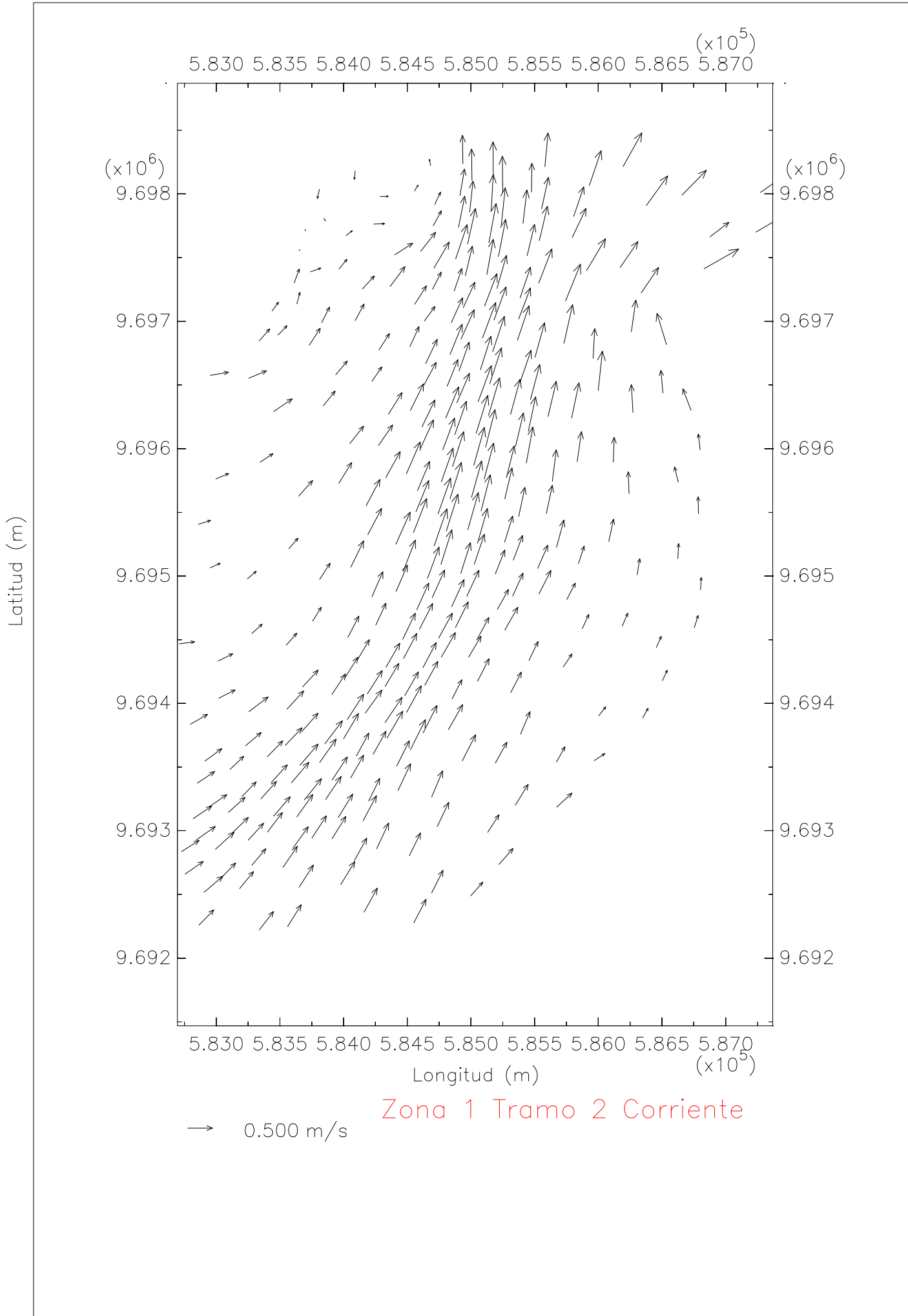


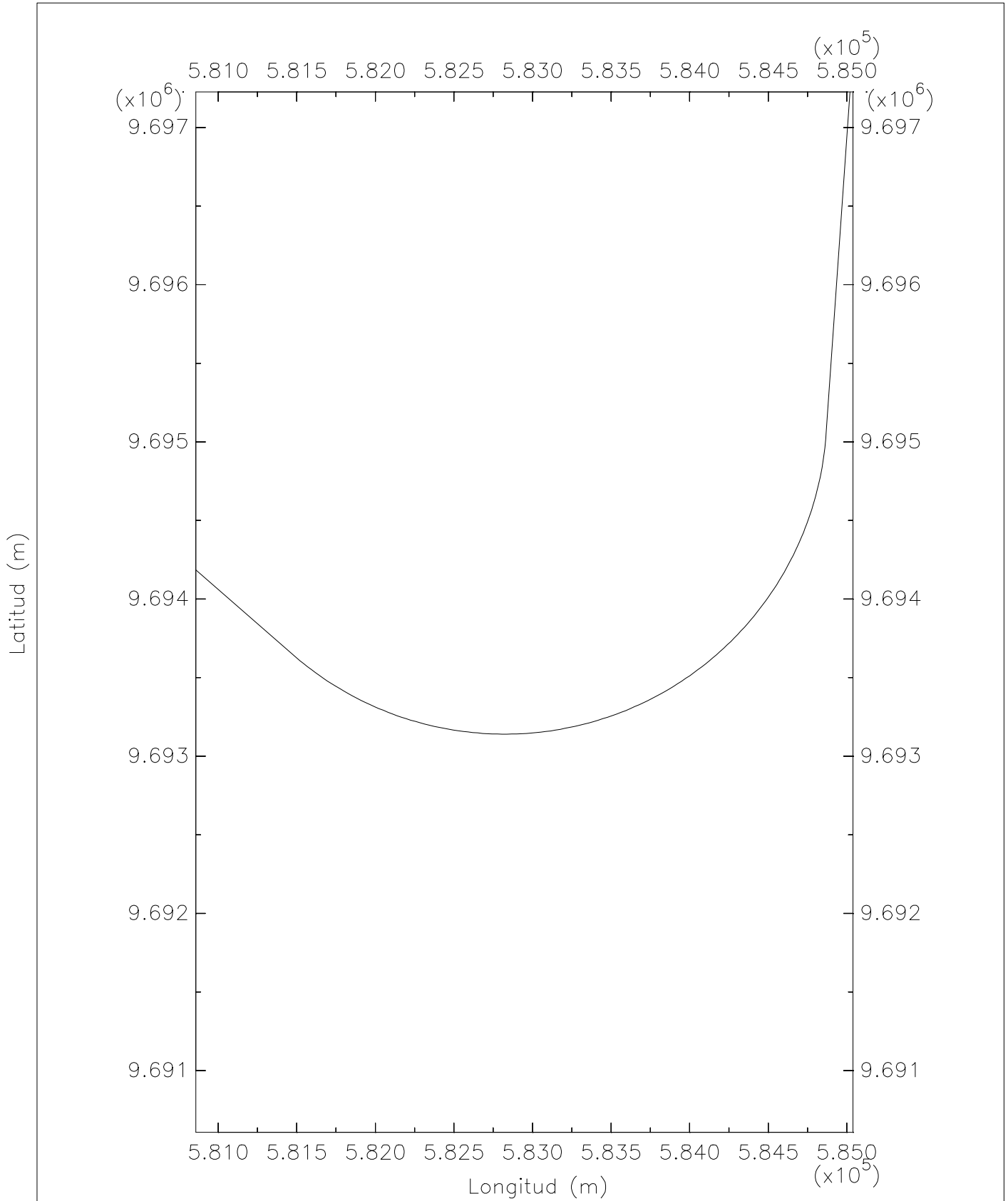
Zona 1 Tramo 2 Profundidad



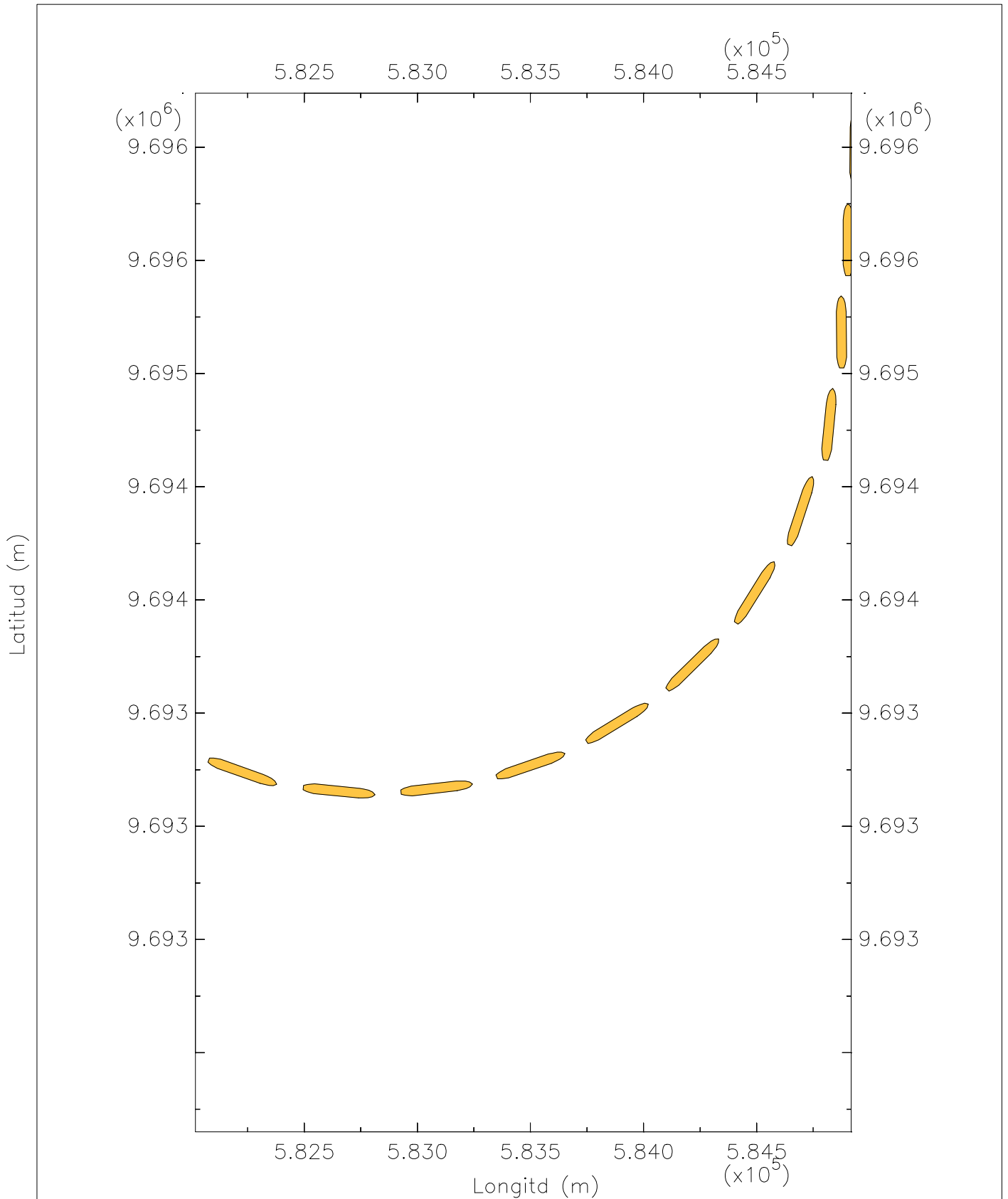


Z1FT1 Corriente y trayectoria del barco portacontenedores post-panamax



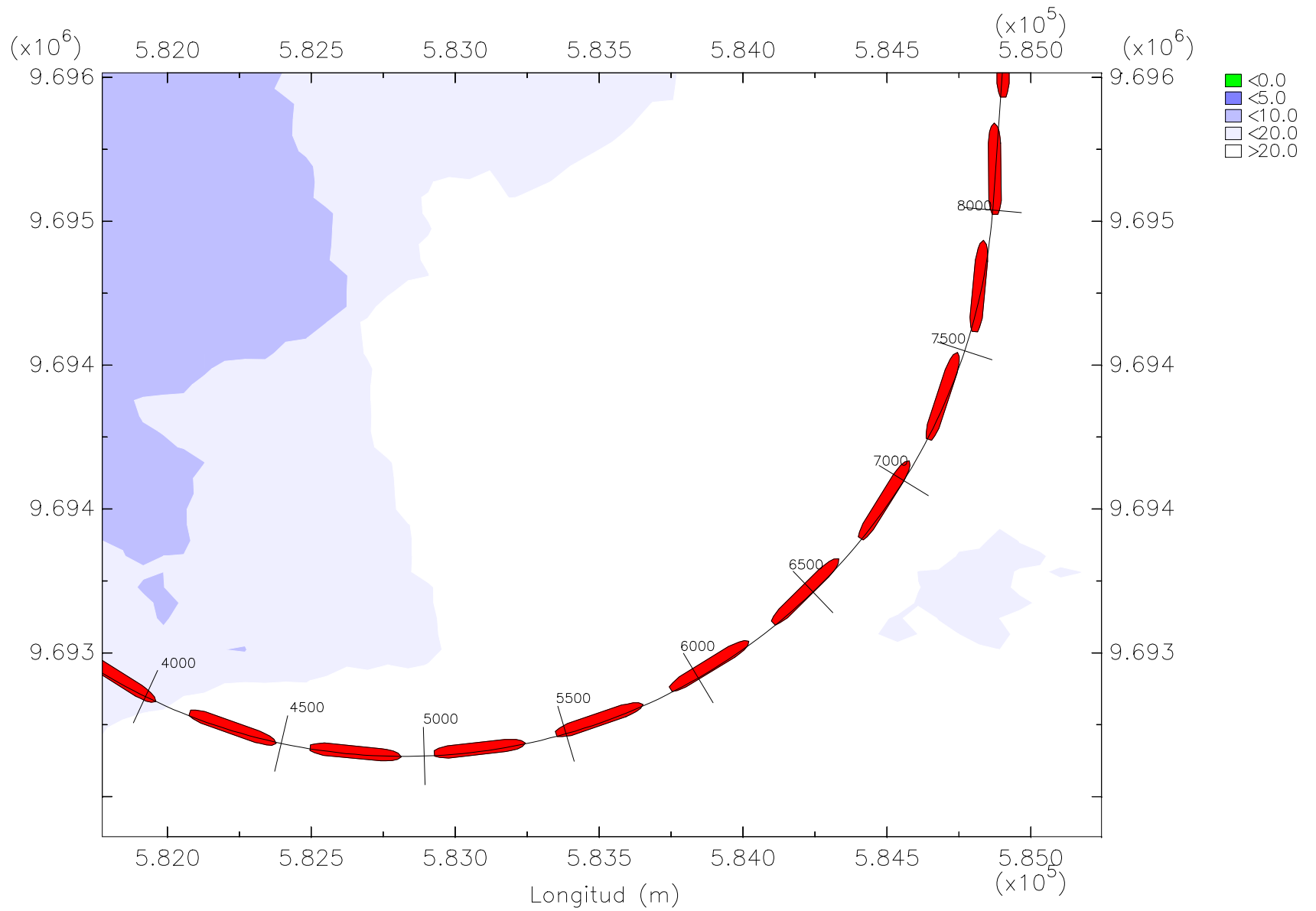


Zona 1 Tramo 2 Eje canal



Z1T2 Trayectoria del barco portacontenedores post-panamax en eflujo

Latitud (m)



Z1T2 Trayectoria del barco post-panamax en flujo

