

**Barco portacontenedores**

**Tipo post-panamax**

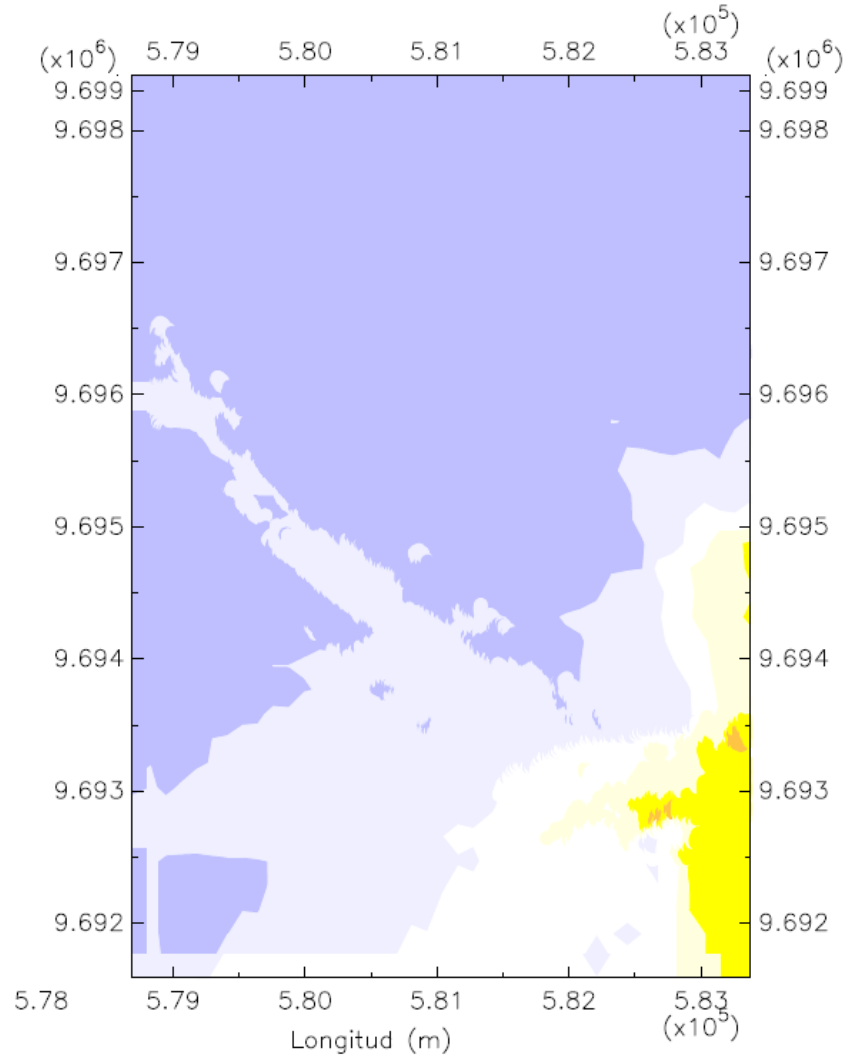
**Eslora: 318.20 m**

**Manga: 42.800 m**

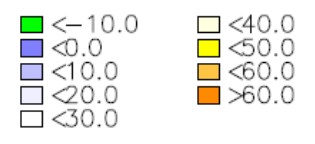
**Calado: 11.60 m**

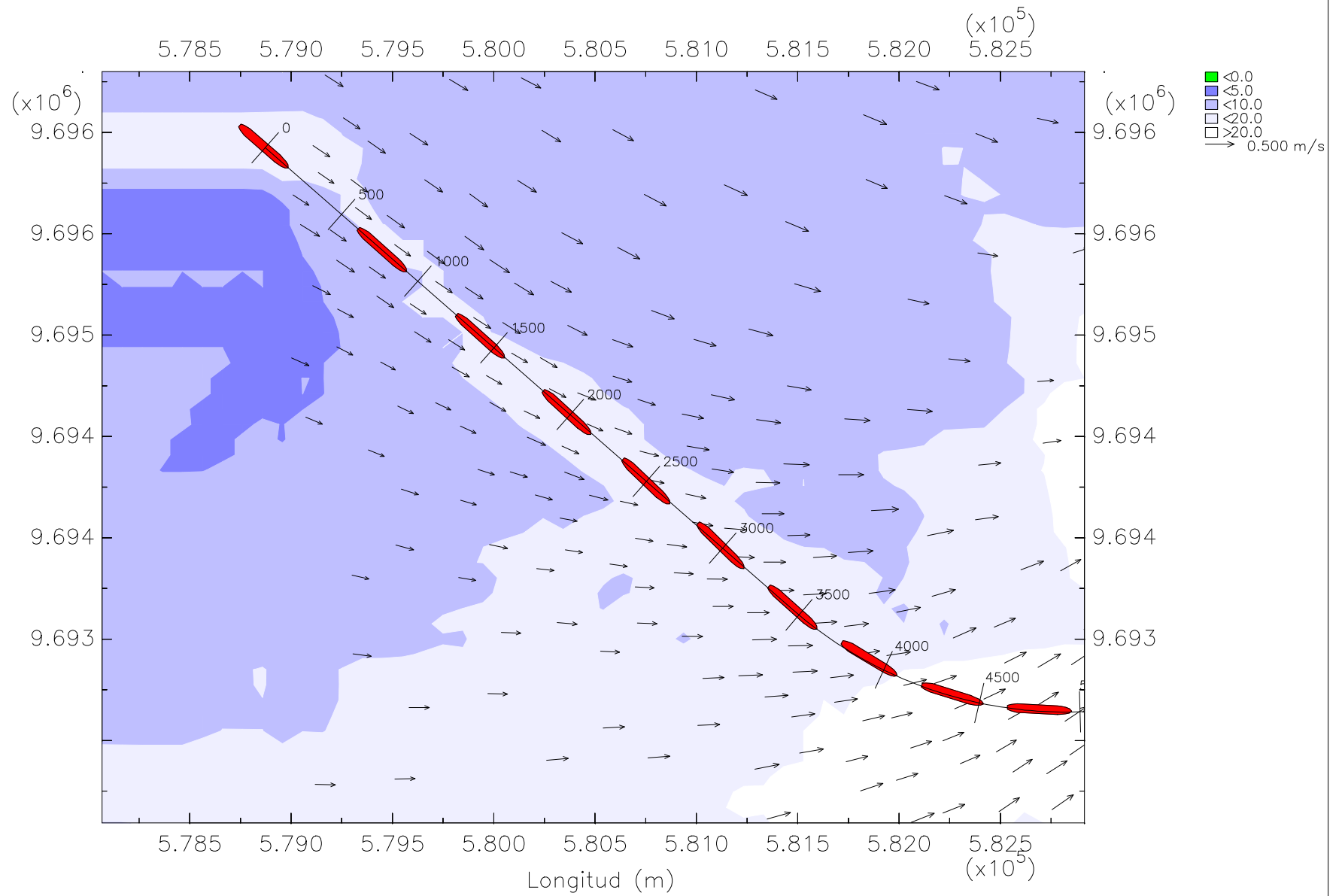
**En la zona 1, tramo 1**

**Bajo condiciones de oleaje y llenante**

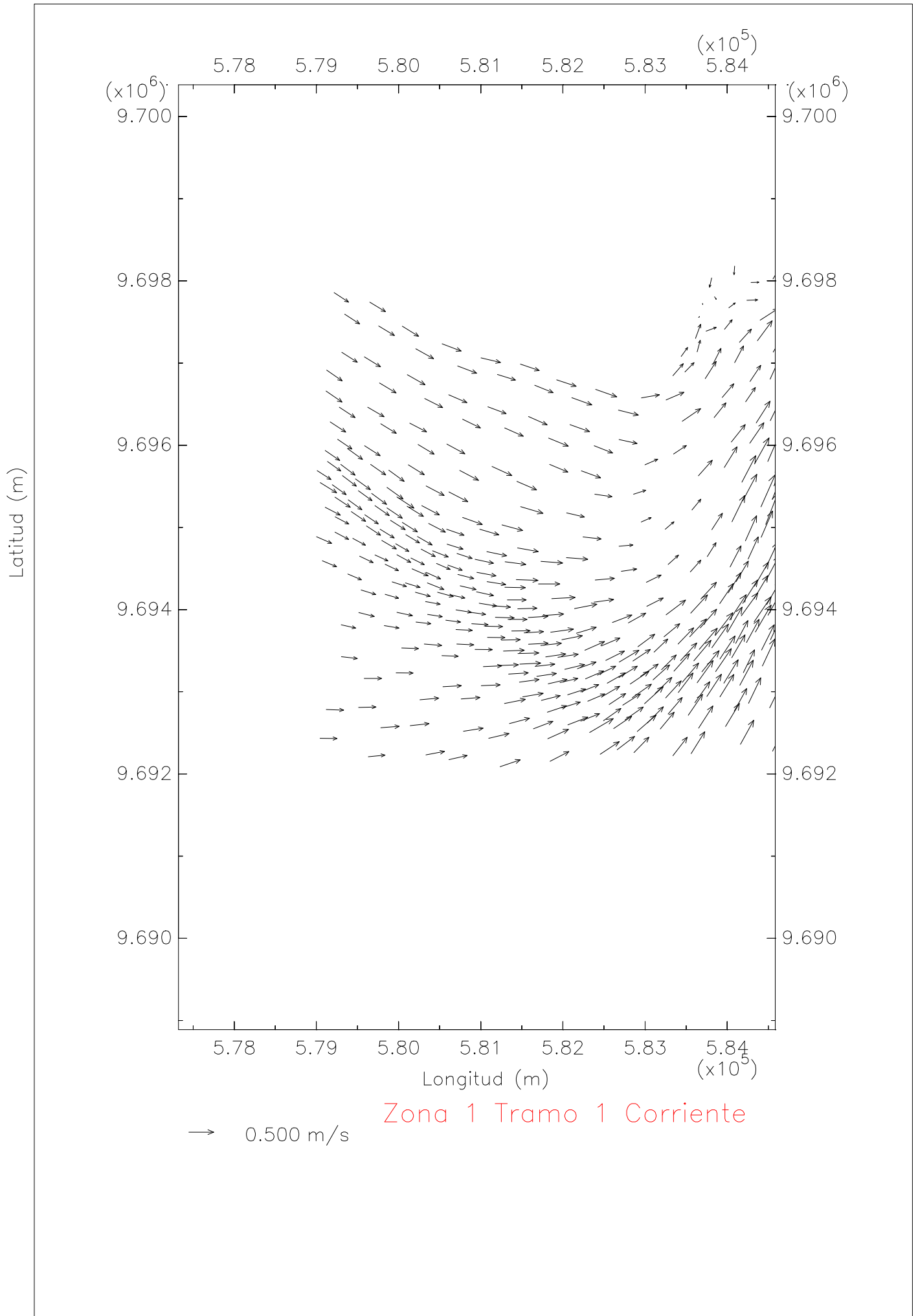


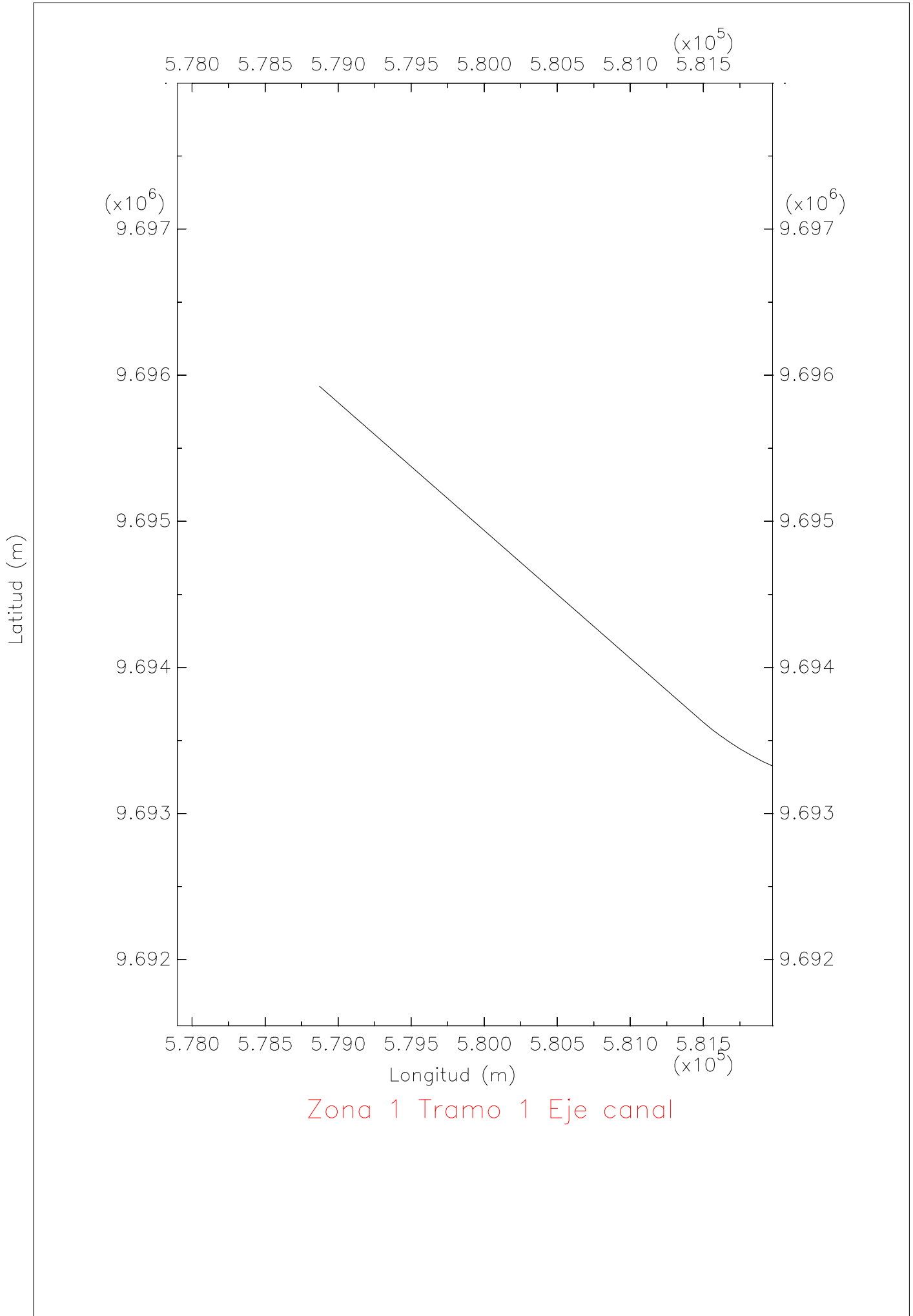
Zona 1 Tramo 1 Profundidad



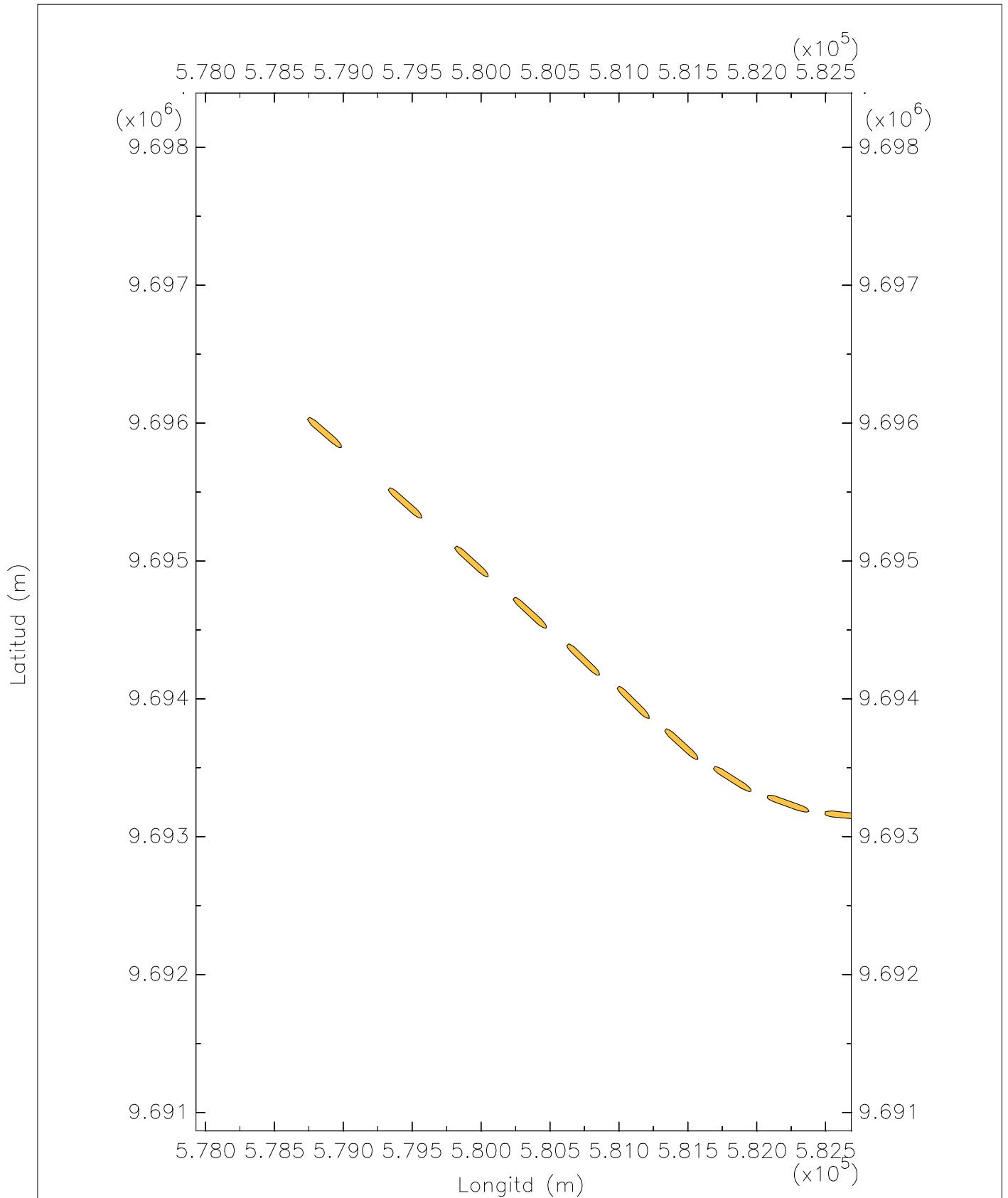


Z1FT1 Corriente y trayectoria del barco portacontenedores post-panamax



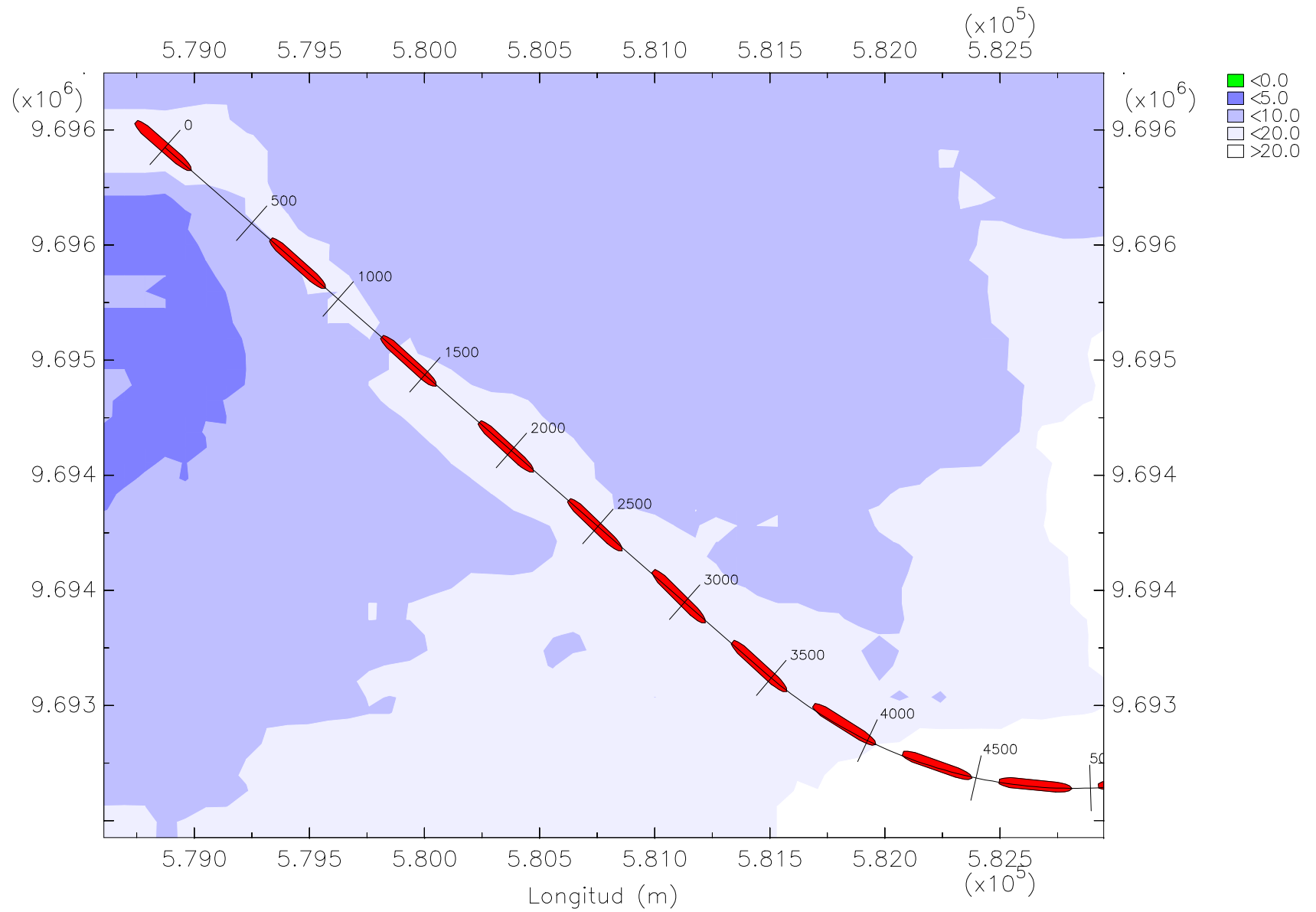


Zona 1 Tramo 1 Eje canal



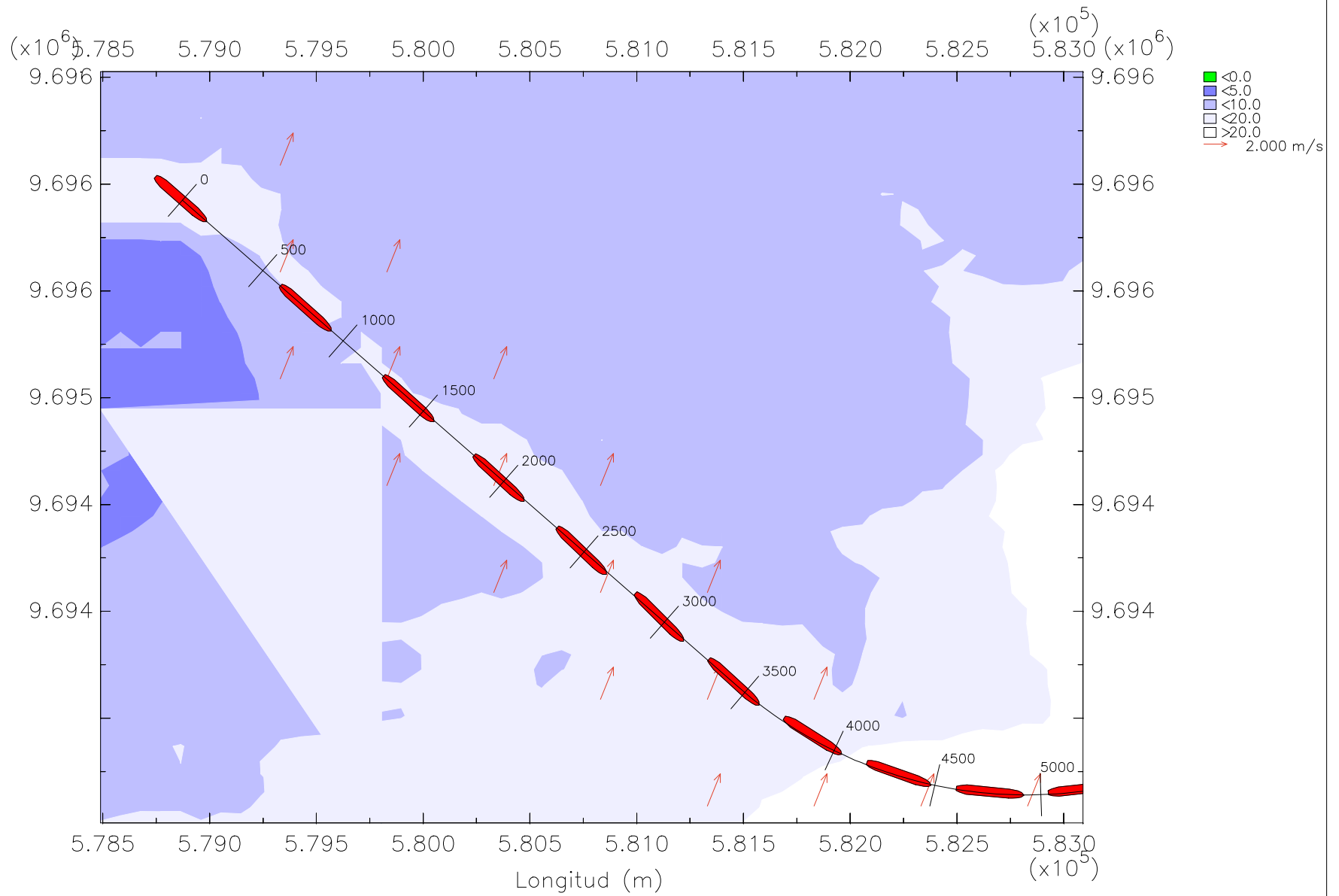
Z1T1 Trayectoria del barco portacontenedores post-panamax en eflujo

Latitud (m)



Z1T1 Trayectoria del barco post-panamax en flujo

Latitud (m)



Z1T1 Vectores de viento



